

2929 Kenny Rd - Office Space Next to OSU



EXPERIENCE MATTERS
110+ Years Proudly Serving the CRE Community

1480 Dublin Rd ♦ Columbus, OH, 43215 ♦ 614.228.5547 ♦ krgre.com



Property Overview

2929 Kenny Rd, Columbus, OH 43221

Located next door to the Ohio State University main campus 2929 Kenny Rd is an excellent leasing opportunity. This building is on the east end of the Kenny Rd office park offering a secluded site at a traffic light with great access. Surface parking surrounds the south of the building. Complex offers signage and shares a beautiful courtyard with the rest of the campus.

Property Highlights

- Located directly next door to The Ohio State University
- The Campus has its own traffic light on Kenny Rd at the ramp to SR315 which sees 100K cars per day
- Traffic count on Kenny Rd is about 20k cars per day
- Building is ready for tenant finishes
- Ample surface parking

Property Summary

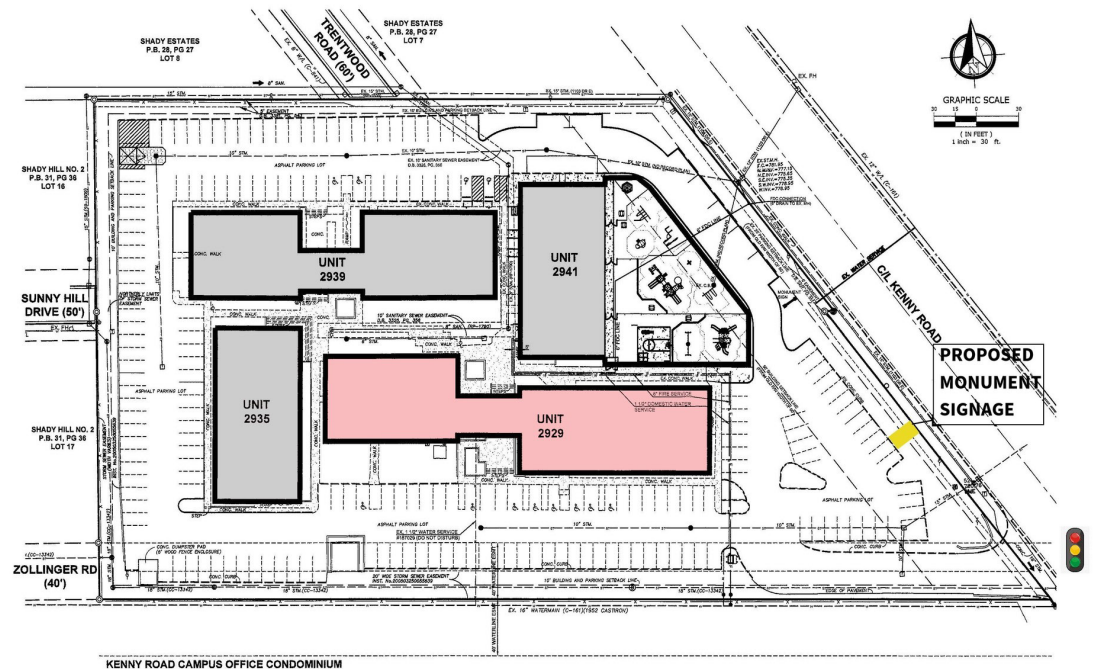
Lease Rate: \$17.50 SF/yr - \$22.50 SF/yr

Building SF: 26,830 SF

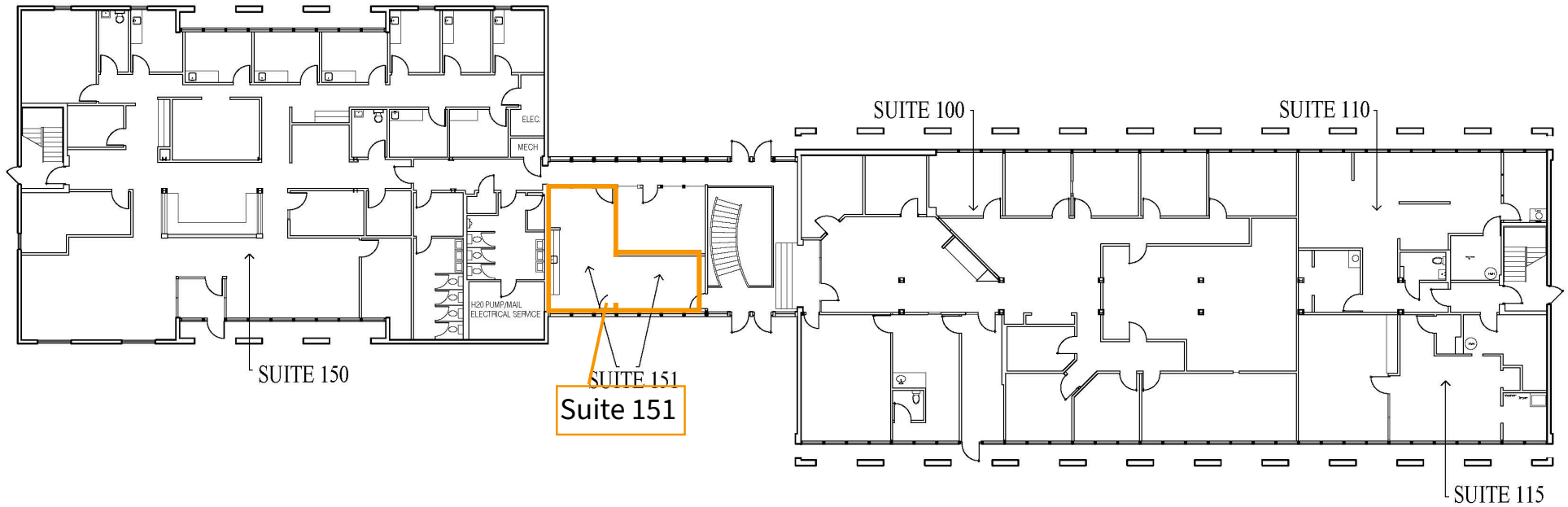
Available SF: 531 SF

Traffic Count: 19,335 (2024)

Traffic Count St: Kenny Rd at Ackerman Rd



1st Floor Availability



AVAILABLE SUITES

Suite #	SF Available	Rate	Type	Description
151	513	\$1,000 /month	TBD	

Area Map



Kenny Rd Campus



University Area

Market Overview - Upper Arlington/OSU



Demographic Snapshot

	2 miles	5 miles
Population	60,601	344,046
Households	25,035	150,277
Avg HHI	\$102,514	\$86,813
Businesses	5,851	27,886
Employees	72,417	313,638

About KRG



EXPERIENCE MATTERS

Proudly Serving The Commercial
Real Estate Community 110+ Years

Since 1914, Kohr Royer Griffith Inc. has been a trusted name in commercial real estate across Central Ohio and beyond. With unmatched service and insight, we've earned the loyalty of individuals, corporations, pension funds, institutions, and government agencies. Our leadership runs deep. KRG team members have held top roles in every major local real estate organization—proof of our influence and dedication to the industry. At KRG, relationships come first. We work closely with clients to build stronger communities, both locally and across state lines.

For more information, please contact:



PAUL BLOOMFIELD, CCIM

O: 614-255-4375

E: pbloomfield@krgre.com



ERIC MORTON

O: 614-255-4380

E: emorton@krgre.com



JOHN ROYER, CRE, SIOR

O: 614-255-4374

E: jroyer@krgre.com

Offering Memorandum

All materials and information received or derived from Kohr Royer Griffith, Inc (KRG) its directors, officers, agents, advisors, affiliates and/or any third party sources are provided without representation or warranty as to completeness, veracity, or accuracy, condition of the property, compliance or lack of compliance with applicable governmental requirements, developability or suitability, financial performance of the property, projected financial performance of the property for any party's intended use or any and all other matters.

Neither KRG its directors, officers, agents, advisors, or affiliates makes any representation or warranty, express or implied, as to accuracy or completeness of any materials of information provided, derived, or received. Materials and information from any source, whether written or verbal, that may be furnished for review are not a substitute for a party's active conduct of its own due diligence to determine these and other matters of significance to such party. KRG will not investigate or verify any such matters or conduct due diligence for a party unless otherwise agreed in writing.

EACH PARTY SHALL CONDUCT ITS OWN INDEPENDENT INVESTIGATION AND DUE DILIGENCE

Any party contemplating or under contract or in escrow for a transaction is urged to verify all information and to conduct their own inspections and investigations including through appropriate third party independent professionals selected by such party.

All financial data should be verified by the party building by obtaining and reading applicable documents and reports and consulting appropriate independent professionals. KRG makes no warranties and/or representations regarding the veracity, completeness, or relevance of any financial data or assumptions. KRG does not serve as a financial advisor to any party regarding any proposed transaction. All data and assumptions regarding financial performance, including that used for financial modeling purposes, may differ from actual data or performance. Any estimates of market rents and/or projected rents that may be provided to a party do not necessarily mean that rents can be established at or increased to that level. Parties must evaluate any applicable contractual and governmental limitations as well as market conditions, vacancy factors and other issues in order to determine rents from or for the property.

Legal questions should be discussed by the party with an attorney. Tax questions should be discussed by the party with a certified public accountant or tax attorney. Title questions should be discussed by the party with a title officer or attorney. Questions regarding the condition of the property and whether the property complies with applicable governmental requirements should be discussed by the party with appropriate engineers, architects, contractors, other consultants and governmental agencies. All properties and services are marketed by KRG in compliance with all applicable fair housing and equal opportunity laws.