



FOR LEASE

9,231 SF Walgreens Space

1363 Divisadero St | San Francisco, CA 94115



Walgreens Space

1363 Divisadero St | San Francisco, CA 94115



9,231 SF

Building

11/1/2028

Lease End Date

\$42 PSF MG

Asking

ABOUT THE PROPERTY

All offers are subject to approval by Walgreens Real Estate Committee.

- Located adjacent to Kaiser Permanente Medical Center
- Close proximity to popular neighborhoods The Fillmore and Japantown
- Divisadero is home to numerous popular restaurants, bars and cafes
- 25 space parking lot

NEARBY RETAILERS



TRAFFIC COUNTS

Divisadero St

10,661 VPD

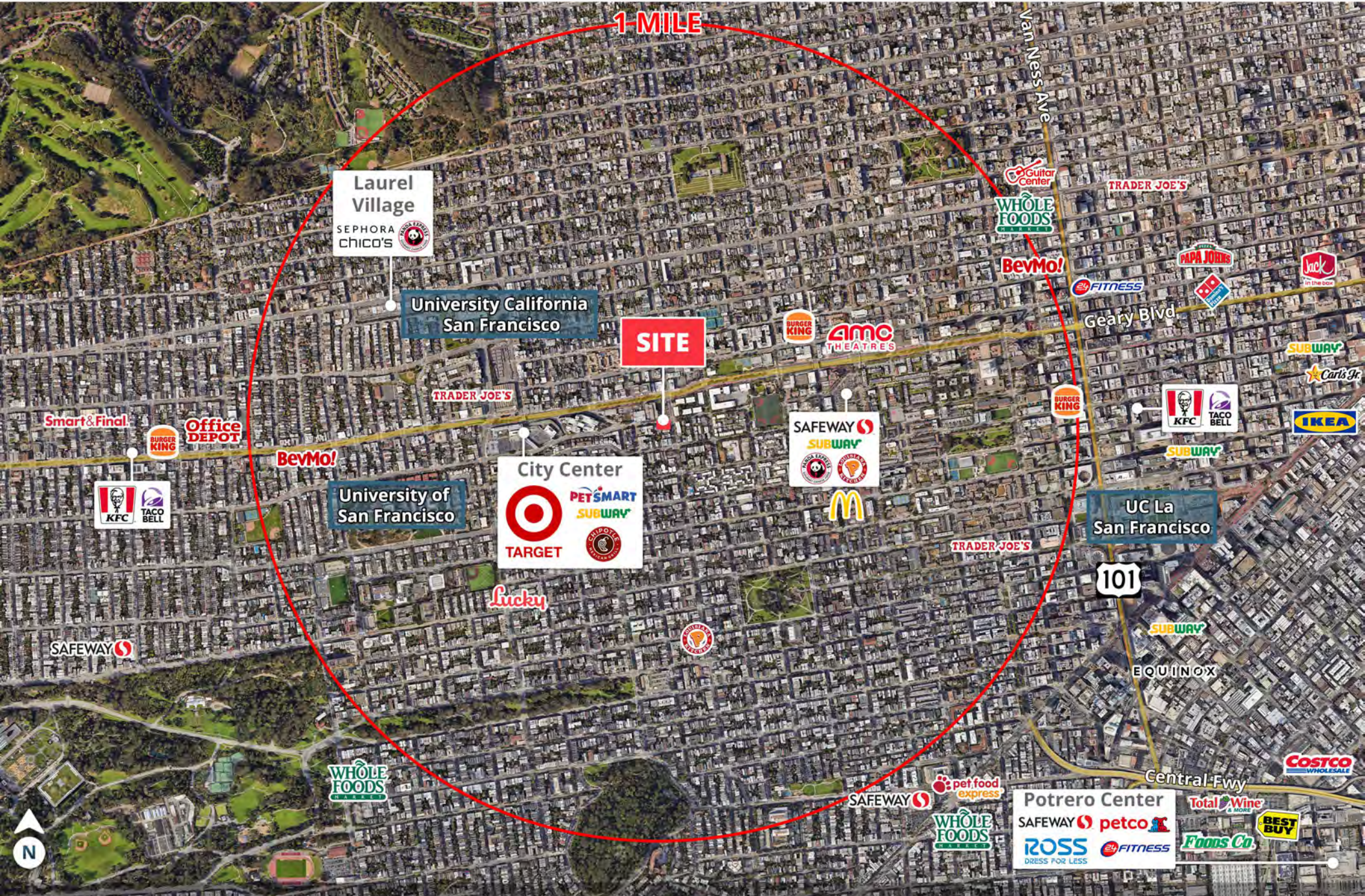
O'Farrel St

3,880 VPD

Year: 2023 | Placer Labs, Inc.

Walgreens Space

1363 Divisadero St | San Francisco, CA 94115

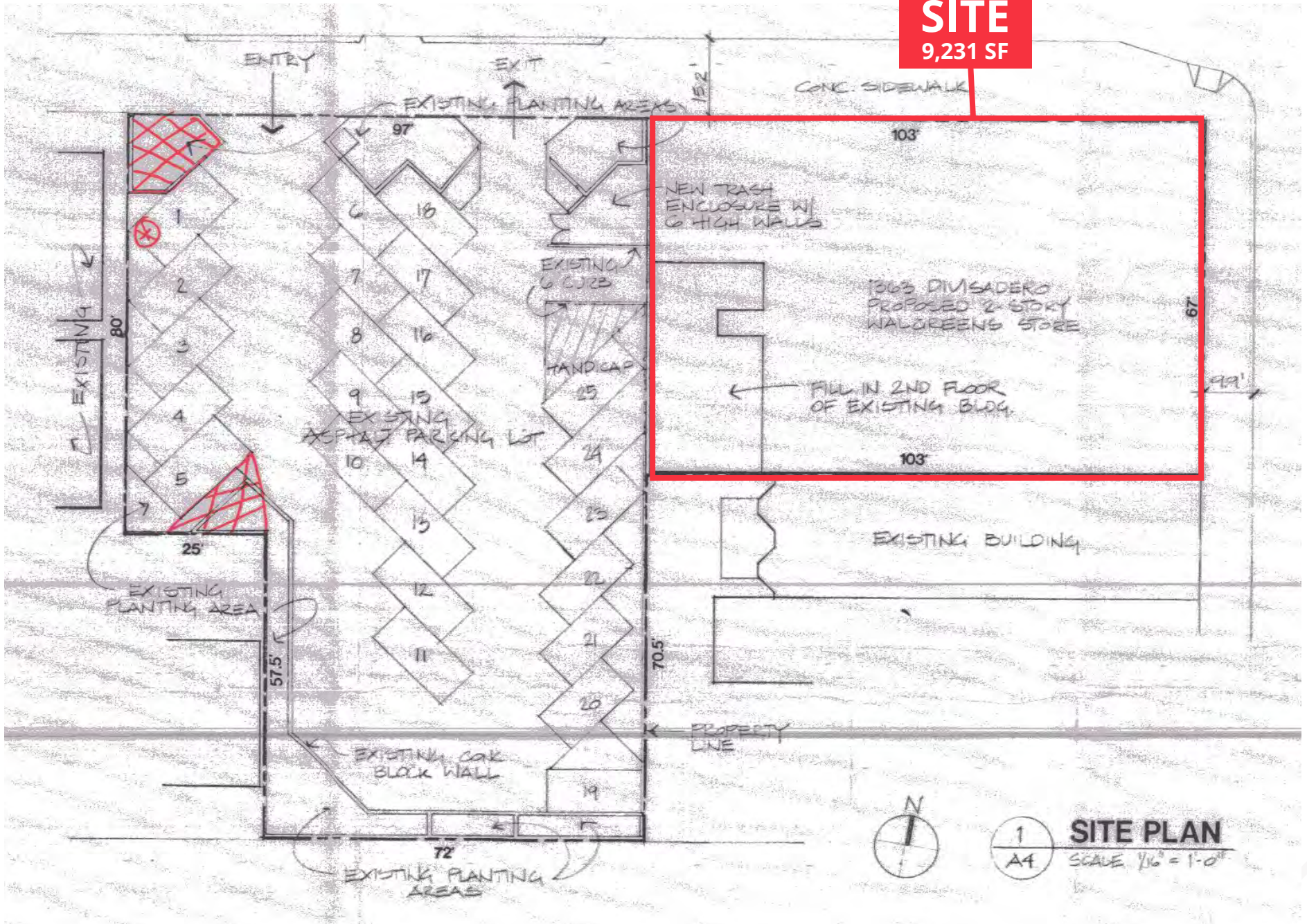


Walgreens Space

1363 Divisadero St | San Francisco, CA 94115



SITE
9,231 SF



1
A4 **SITE PLAN**
SCALE 1/16" = 1'-0"

DEMOGRAPHIC HIGHLIGHTS

Population

	1 Mile	3 Miles	5 Miles
2024 Estimated Population	89,893	535,634	801,208
2029 Projected Population	91,768	545,718	815,610
Projected Annual Growth 2024 to 2029	0.41%	0.37%	0.36%

2024 Daytime Population

	1 Mile	3 Miles	5 Miles
Daytime Population	89,787	825,740	1,026,406
Workers	62,269	657,788	745,998
Residents	27,518	167,952	280,408

2024 Income

	1 Mile	3 Miles	5 Miles
Average Household Income	\$215,735	\$207,885	\$201,102
Median Household Income	\$157,963	\$150,448	\$144,188

Households & Growth

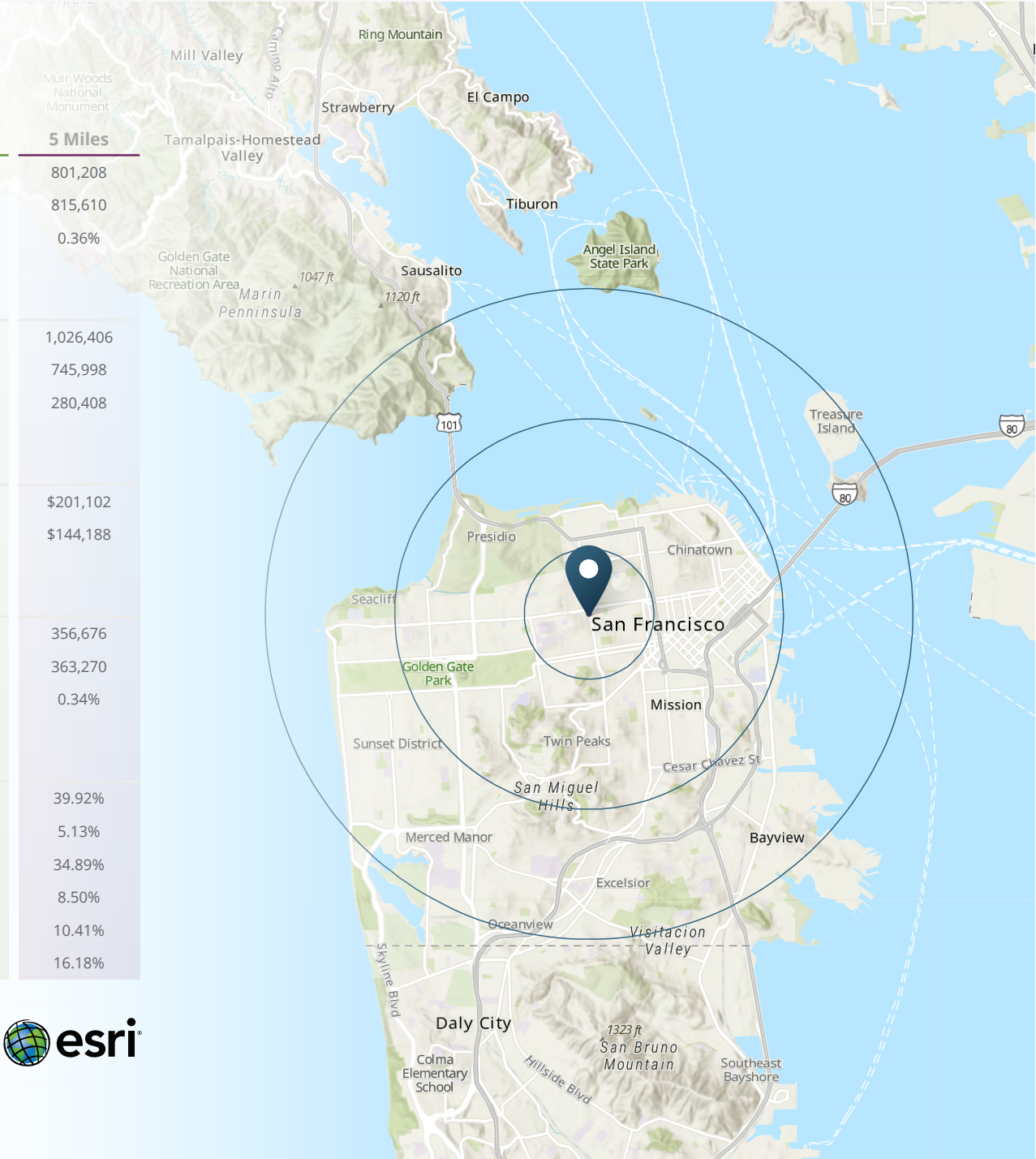
	1 Mile	3 Miles	5 Miles
2024 Estimated Households	44,558	265,214	356,676
2029 Projected Households	45,487	270,554	363,270
Projected Annual Growth 2024 to 2029	0.52%	0.39%	0.34%

2024 Race & Ethnicity

	1 Mile	3 Miles	5 Miles
White	52.83%	46.83%	39.92%
Black or African American	7.71%	4.58%	5.13%
Asian or Pacific Islander	23.01%	29.66%	34.89%
Other Race	5.06%	7.24%	8.50%
Two or More Races	10.73%	10.66%	10.41%
Hispanic	11.14%	14.65%	16.18%

> **Want more?** Contact us for a complete demographic, foot-traffic, and mobile data insights report.

SOURCE esri





SRS Real Estate Partners
150 California Street, 14th Fl
San Francisco, CA 94111
415.908.4930

Matthew D. Alexander
EVP & Principal
415.908.4938
matt.alexander@srsre.com
CA License No. 00883993

Sarah D. Edwards
First Vice President
408.216.2322
sarah.edwards@srsre.com
CA License No. 01297272

SRSRE.COM

© SRS Real Estate Partners

The information presented was obtained from sources deemed reliable;
however SRS Real Estate Partners does not guarantee its completeness or accuracy.