

# For Sale & Lease

156 Strawberry Plains Road Suites C & D  
Williamsburg, Virginia 23185



**For Additional Information Please Contact**



**Vince Campana**

1313 Jamestown Road Suite 201

Williamsburg, Virginia 23185

[www.CWCREW.net](http://www.CWCREW.net)

**757.209.2990**

# For Sale & Lease

**156 Strawberry Plains Road Suites C & D**  
**Williamsburg, Virginia 23185**

**Location:** 156 Strawberry Plains Road Suite C & D Williamsburg, Virginia 23185

**Description:** This offering consists of two condominiums for sale! Both condos are located on the second floor with elevator and stair well access. Suite C is currently vacant and ready for immediate use. Suite D has a long-standing tenant in place. Each suite is laid out as an office for a wide array of business uses. The condominiums are conveniently located in the heart of Williamsburg, Virginia near New Town, High Street, and the College of William & Mary. These are must see suites!

**Parking:** There is ample shared parking for the building!

**Suite Sizes:** Suite C – 2,282 square feet  
Suite D – 2,188 square feet

**Sale Price:** Suite C – \$276,000.00 (current condo fees \$562.28 /month)  
Suite D – \$265,500.00 (current condo fees \$236.63 /month)

**Lease Rate:** \$16/square foot - NNN

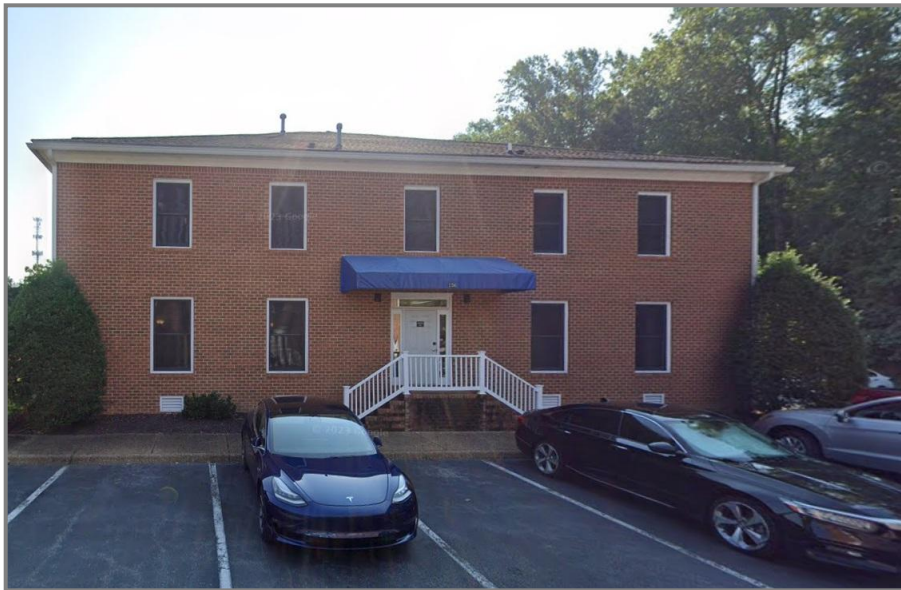


**Vince Campana**  
1313 Jamestown Road Suite 201  
Williamsburg, Virginia 23185  
[www.CampanaWaltz.com](http://www.CampanaWaltz.com)

**757.209.2990**

*This information was obtained from sources deemed to be reliable, but is not warranted.  
This offer subject to errors and omissions, or withdrawal, without notice.*

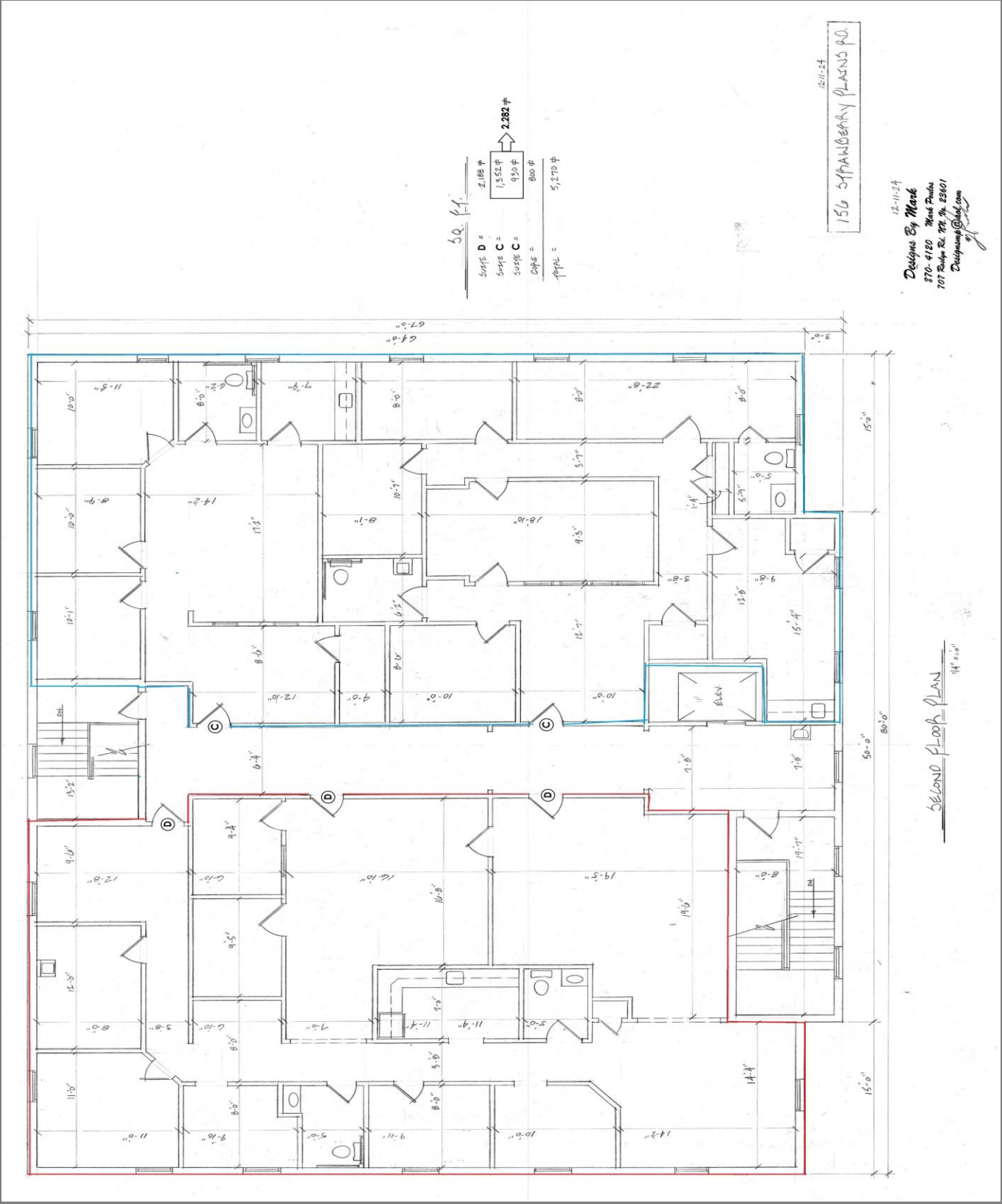
# Building Photographs



*This information was obtained from sources deemed to be reliable, but is not warranted.  
This offer subject to errors and omissions, or withdrawal, without notice.*



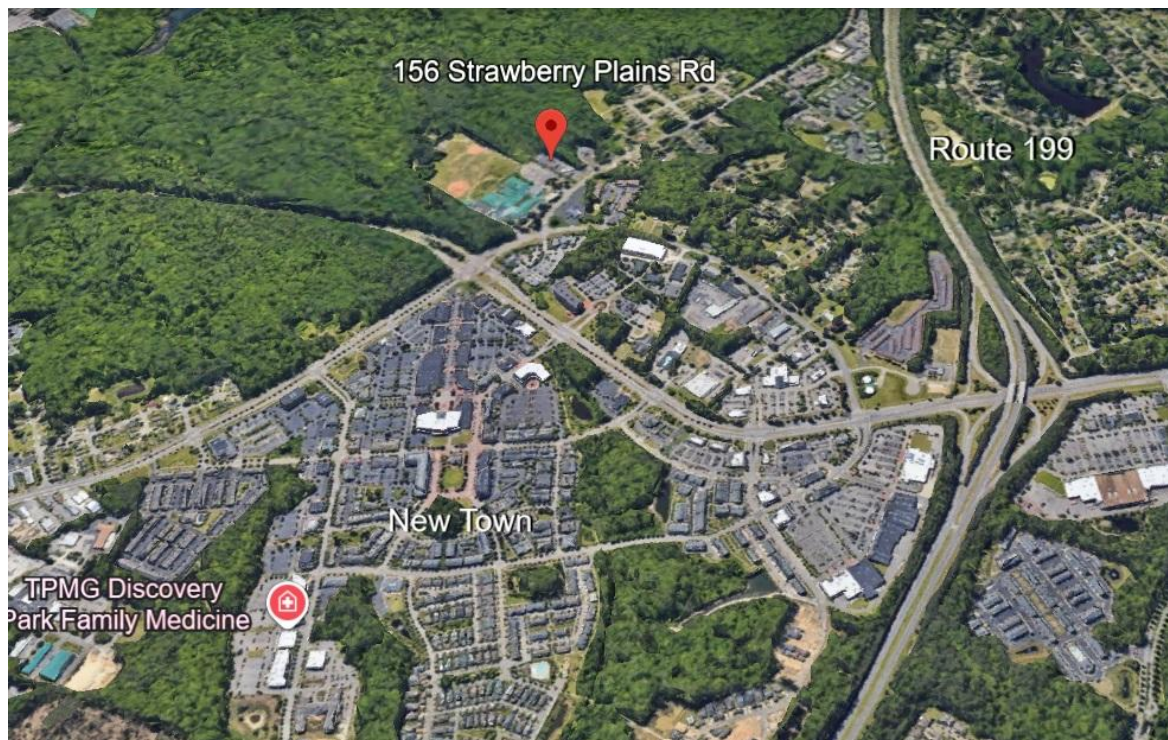
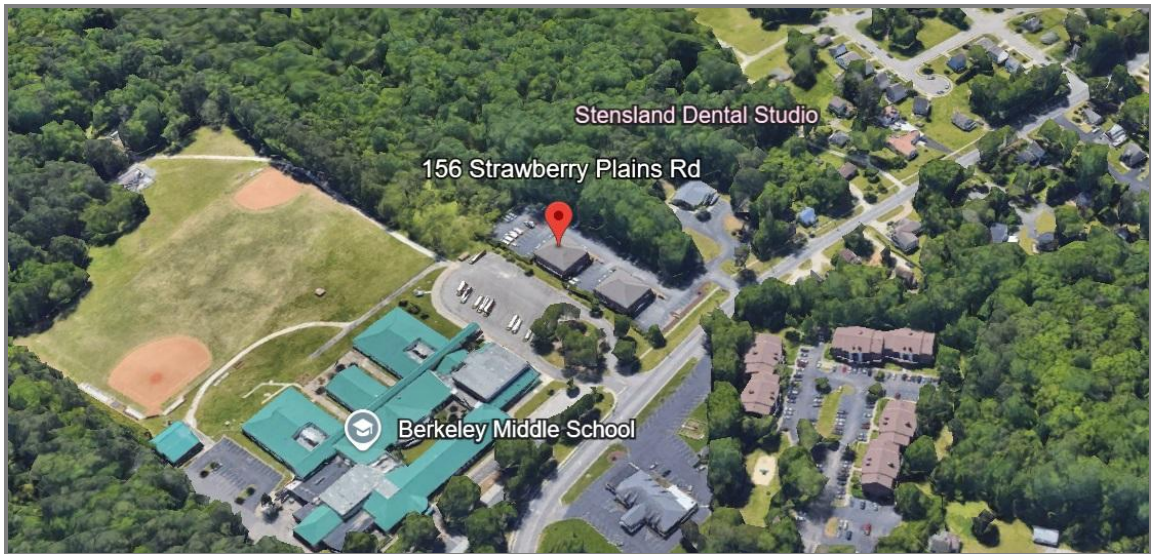
# Suite Drawings



Designs By Mark  
370-4120 Mark Poulos  
707 Ridge Rd. #4 25601  
DesignsByMark.com

This information was obtained from sources deemed to be reliable, but is not warranted.  
This offer subject to errors and omissions, or withdrawal, without notice.

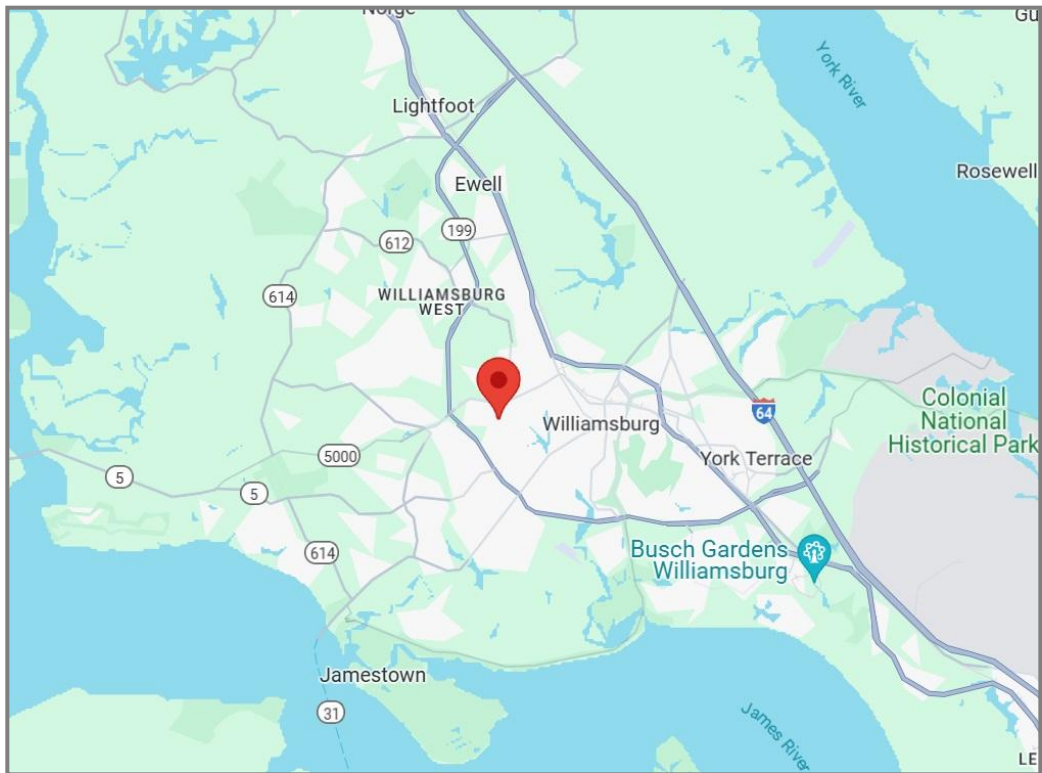
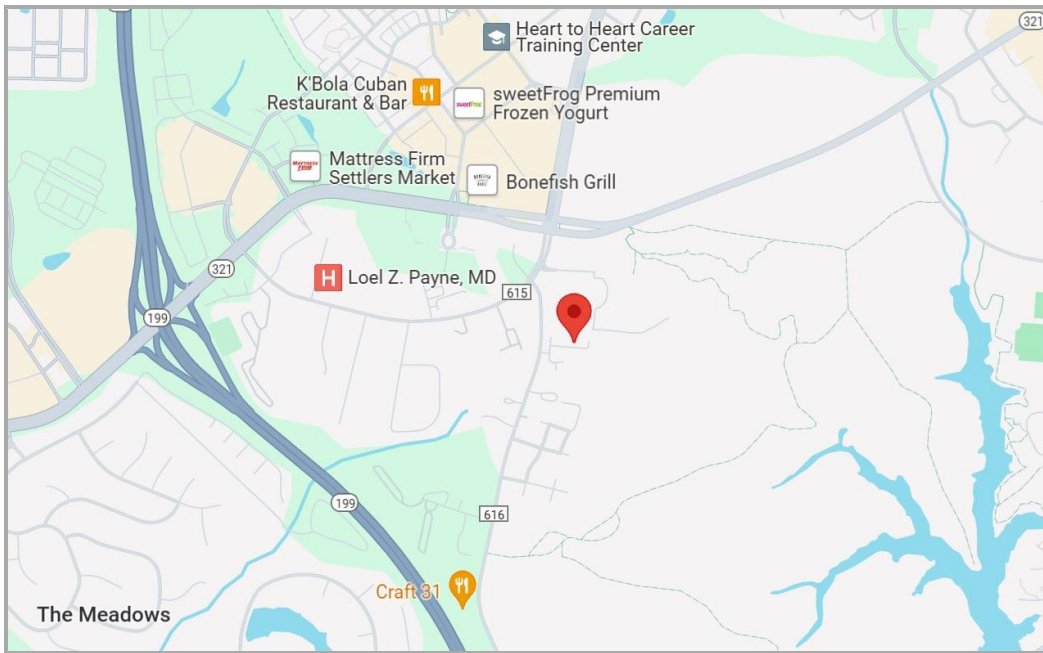
# Aerial



*This information was obtained from sources deemed to be reliable, but is not warranted.  
This offer subject to errors and omissions, or withdrawal, without notice.*



# Maps



*This information was obtained from sources deemed to be reliable, but is not warranted.  
This offer subject to errors and omissions, or withdrawal, without notice.*