

Available SF 10,900 SF

Industrial For Lease

Building Size 10,900 SF



**Property Name:** Seagate Business Park  
**Address:** 201 N Lombard St, Oxnard, CA 93030  
**Cross Streets:** N Lombard St/Camino del Sol

Seagate Business Park  
 Free Standing Building  
 Excellent Industrial Facility  
 Great Oxnard Location Near 101 Fwy  
 Close Proximity to Port Hueneme

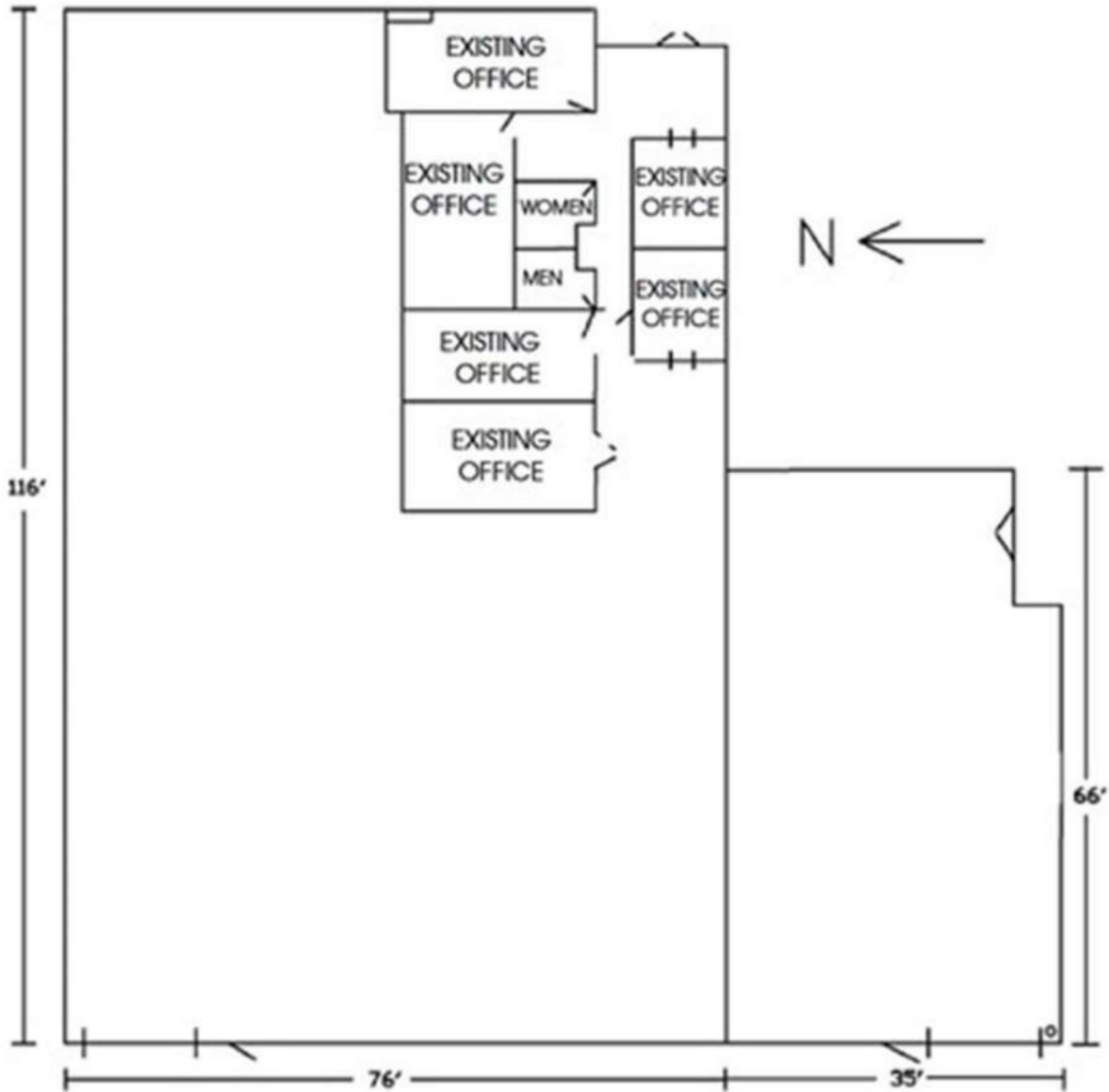
<b>Lease Rate/Mo:</b>	\$9,592	<b>Sprinklered:</b>	Yes	<b>Office SF / #:</b>	1,200 SF / 6
<b>Lease Rate/SF:</b>	\$0.88	<b>Clear Height:</b>	16'	<b>Restrooms:</b>	2
<b>Lease Type:</b>	Modified Gross	<b>GL Doors/Dim:</b>	2	<b>Office HVAC:</b>	Heat & AC
<b>Available SF:</b>	10,900 SF	<b>DH Doors/Dim:</b>	0	<b>Finished Ofc Mezz:</b>	0 SF
<b>Minimum SF:</b>	10,900 SF	<b>A: V: O: W:</b>		<b>Include In Available:</b>	No
<b>Prop Lot Size:</b>	0.63 Ac / 27,482 SF	<b>Construction Type:</b>	Tiltwall	<b>Unfinished Mezz:</b>	0 SF
<b>Term:</b>	3-5 Years	<b>Const Status/Year Blt:</b>	Existing / 1990	<b>Include In Available:</b>	No
<b>Sale Price:</b>	NFS	<b>Whse HVAC:</b>	No	<b>Possession:</b>	10/01/2019
<b>Sale Price/SF:</b>	NFS	<b>Parking Spaces: 19 / Ratio:</b>	1.7:1	<b>Vacant:</b>	No
<b>Taxes:</b>	\$13,199.90	<b>Rail Service:</b>	No	<b>To Show:</b>	Call broker
<b>Yard:</b>	No	<b>Specific Use:</b>	Warehouse/Office	<b>Market/Submarket:</b>	Oxnard/Port Hueneme
<b>Zoning:</b>	ML			<b>APN#:</b>	216020204
<b>Listing Company:</b>	KW Commercial				
<b>Agents:</b>	<a href="mailto:rfeder@rjfeder.com">Ron Feder 818-222-0404</a> , <a href="mailto:Taylor.Jocoy@kw.com">Taylor Jocoy 818-483-3627</a>				
<b>Listing #:</b>	23483487	<b>Listing Date:</b>	07/09/2019	<b>FTCF:</b>	CB250N000S000/A0AA
<b>Notes:</b>	Tenant to verify all information.				

**Ron Feder**  
 rfeder@rjfeder.com  
 818-222-0404

**AIRCRI**  
 Powered by: Catylist

# 201 Lombard Street, Oxnard

10,900 Total SF



**Ron Feder**  
rfeder@rjfeder.com  
818-222-0404

