



CENTURY 21 COMMERCIAL®

ListSmart

10333 SEMINOLE BLVD UNIT 6

SEMINOLE, FL 33778

FANTASTIC OPPORTUNITY AT BUSY INTERSECTION IN LARGO/SEMINOLE AWAITS! MEDICAL CONDO CURRENTLY USED AS A PSYCHOLOGISTS OFFICE. MATURE LANDSCAPING AND PLENTY OF PARKING AVAILABLE IN THIS SMALL COMPLEX. REASONABLE HOA FEE INCLUDES EXTERIOR MAINTENANCE/ PEST CONTROL/ WATER AND GARBAGE SERVICE. TRAFFIC COUNTS OVER 32500 CARS ON SEMINOLE BLVD AND 33500 CARS ON 102ND. GREAT LOCATION WITH MANY POSSIBLE USES!



PROPERTY FEATURES

- 1,225 SQ FT
- 4/5 OFFICES
- WAITING AREA, RECEPTION, AND KITCHENETTE
- 1 ADA RESTROOM
- OUTSTANDING PARKING RATIO

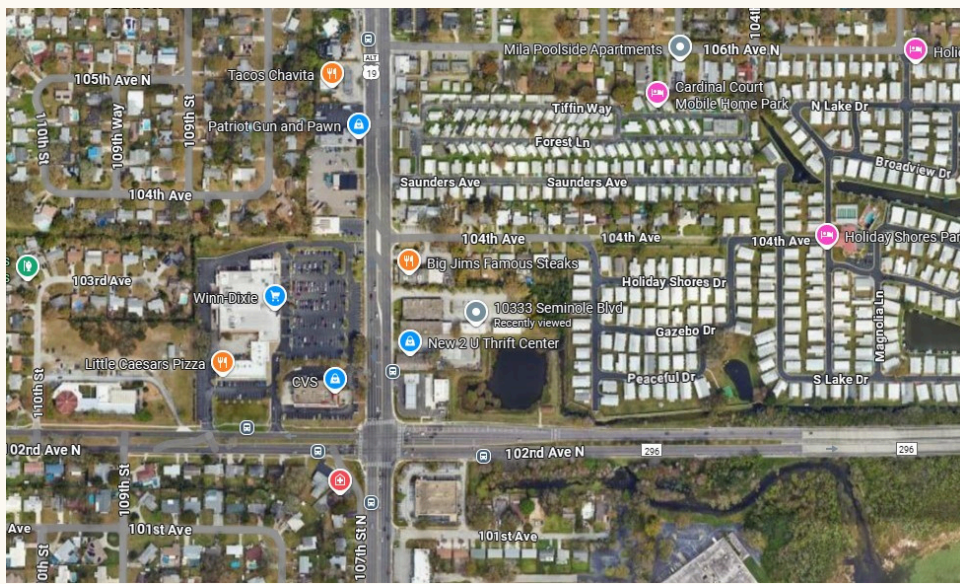
OFFERED AT

\$289,000.00

CONTACT US NOW

FAYE WALTERS
CENTURY 21 LISTSMART
C. 727-580-3858
O. 727-822-8100





CENTURY 21 COMMERCIAL®

ListSmart



FAYE WALTERS
CENTURY 21 LISTSMART
C. 727-580-3858
O. 727-822-8100

MANY POTENTIAL USES FOR THIS WELL LOCATED MEDICAL OFFICE CONDO. SUITE HAS 4/5 OFFICES WITH PRIVATE REST ROOM, WAITING AREA, RECEPTION, AND KITCHENTTE.

CURRENT TENANTS INCLUDE:

- DENTIST OFFICE
- MASSAGE CENTER
- PSYCHLOGIST OFFICE
- ATTORNEY OFFICE
- CHINESE MEDICINE

