



Discounted Full Service Gross Rent

## Mission Oaks Business Park

5141 Verdugo Way, Suites B & C  
Camarillo, California 93012

### Property Highlights

- Immediate Plug & Play Occupancy - Multiple private offices, large conference/meeting room, workroom, storage and shared breakroom & restrooms
- Building Signage Possible
- Nearby Retail Amenities and Restaurants at The Plaza
- Central Ventura County Location with Easy 101 Freeway Access at Santa Rosa Road
- Adjacent patio area for outdoor use.
- \*Suite B is 2,517 SF
- \*Suite C is 2,393 SF
- \*Total Combined area is 4,910 SF
- Discounted Lease Rate - \$1.50 per RSF per Month, Full Service Gross Lease



### Bill Kiefer, SIOR

Executive Managing Director | 805.288.5467  
bkiefer@naicapital.com | CalDRE #00828915





Adjacent Patio Area



Shared Kitchen



Large Conference Room / Board Room



Lobby Reception

**Bill Kiefer, SIOR**  
Executive Managing Director | 805.288.5467  
bkiefer@naicapital.com | CalDRE #00828915



www.naicapital.com

NO WARRANTY, EXPRESS OR IMPLIED, IS MADE AS TO THE ACCURACY OF THE INFORMATION CONTAINED HEREIN. THIS INFORMATION IS SUBMITTED SUBJECT TO ERRORS, OMISSIONS, CHANGE OF PRICE, RENTAL OR OTHER CONDITIONS, WITHDRAWAL WITHOUT NOTICE, AND IS SUBJECT TO ANY SPECIAL LISTING CONDITIONS IMPOSED BY OUR PRINCIPALS, COOPERATING BROKERS, BUYERS, TENANTS AND OTHER PARTIES WHO RECEIVE THIS DOCUMENT SHOULD NOT RELY ON IT, BUT SHOULD USE IT AS A STARTING POINT OF ANALYSIS, AND SHOULD INDEPENDENTLY CONFIRM THE ACCURACY OF THE INFORMATION CONTAINED HEREIN THROUGH A DUE DILIGENCE REVIEW OF THE BOOKS, RECORDS, FILES AND DOCUMENTS THAT CONSTITUTE RELIABLE SOURCES OF THE INFORMATION DESCRIBED HEREIN. LOGOS ARE FOR IDENTIFICATION PURPOSES ONLY AND MAY BE TRADEMARKS OF THEIR RESPECTIVE COMPANIES. NAI CAPITAL, INC. CAL DRE LIC. #02130474



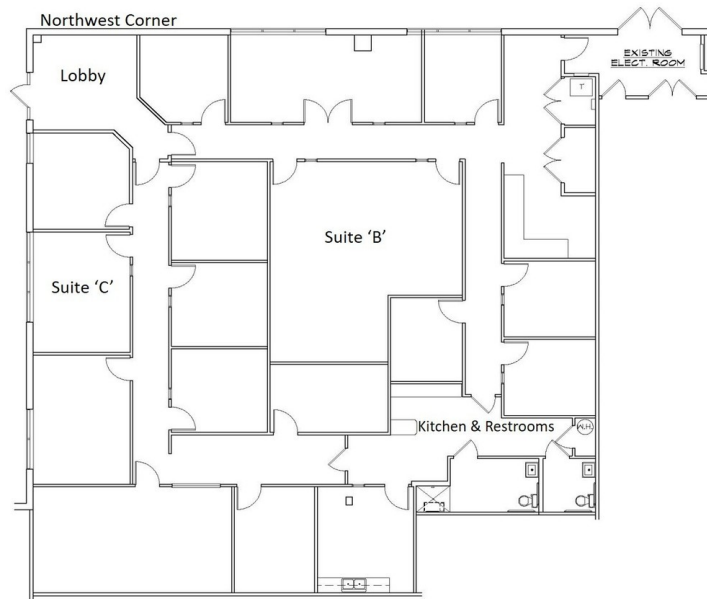
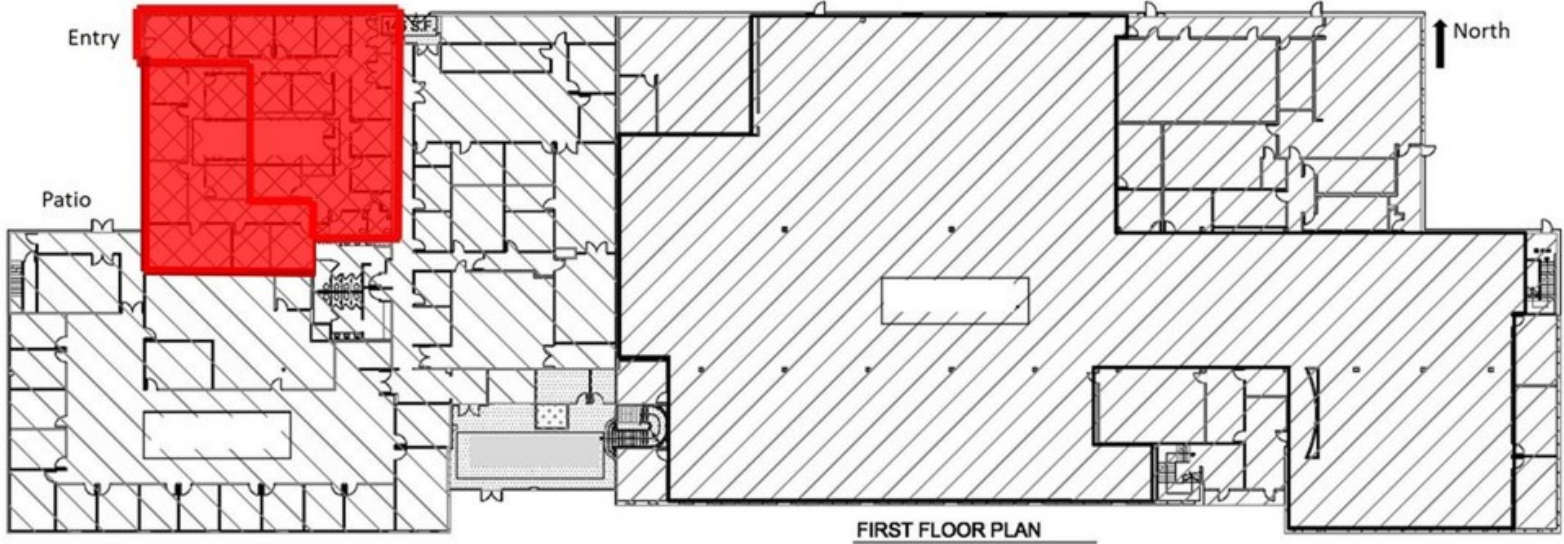
FOR LEASE



PROFESSIONAL OFFICES



2,393 TO 4,910  
RSF



**5141 VERDUGO WAY - 4,910 RSF**  
**AS-BUILT FLOOR PLAN**

SCALE: NTS JULY 23, 2021

Suite B is 2,517 RSF

Suite C is 2,393 RSF



**Bill Kiefer, SIOR**

Executive Managing Director | 805.288.5467

bkiefer@naicapital.com | CalDRE #00828915



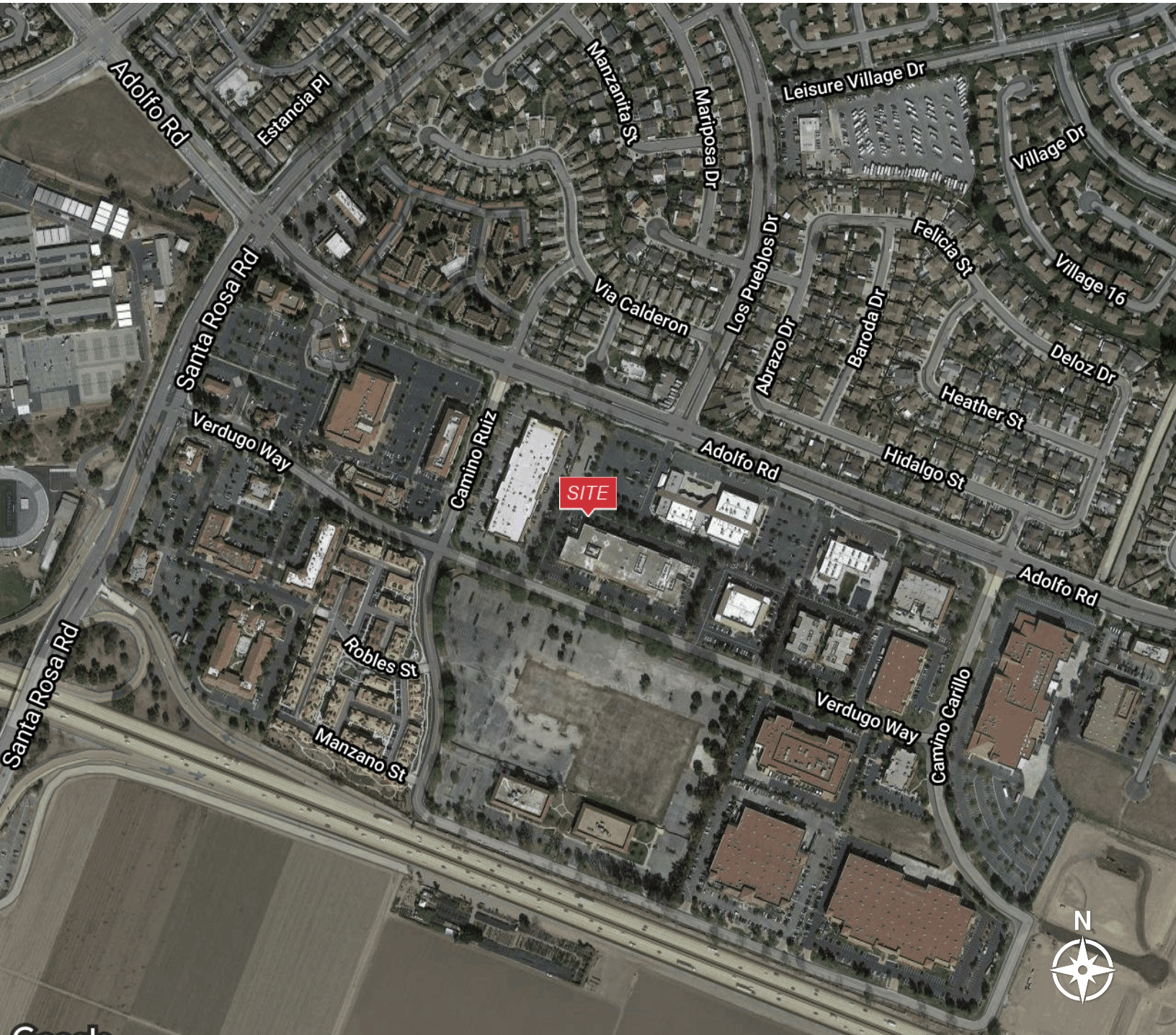
FOR LEASE



PROFESSIONAL OFFICES



2,393 TO 4,910  
RSF



©2021 Imagery ©2021 City of Thousand Oaks, Maxar Technologies, U.S. Geological Survey, USDA Farm Service Agency

**Bill Kiefer, SIOR**

Executive Managing Director | 805.288.5467  
bkiefer@naicapital.com | CalDRE #00828915



www.naicapital.com

NO WARRANTY, EXPRESS OR IMPLIED, IS MADE AS TO THE ACCURACY OF THE INFORMATION CONTAINED HEREIN. THIS INFORMATION IS SUBMITTED SUBJECT TO ERRORS, OMISSIONS, CHANGE OF PRICE, RENTAL OR OTHER CONDITIONS, WITHDRAWAL WITHOUT NOTICE, AND IS SUBJECT TO ANY SPECIAL LISTING CONDITIONS IMPOSED BY OUR PRINCIPALS, COOPERATING BROKERS, BUYERS, TENANTS AND OTHER PARTIES WHO RECEIVE THIS DOCUMENT SHOULD NOT RELY ON IT, BUT SHOULD USE IT AS A STARTING POINT OF ANALYSIS, AND SHOULD INDEPENDENTLY CONFIRM THE ACCURACY OF THE INFORMATION CONTAINED HEREIN THROUGH A DUE DILIGENCE REVIEW OF THE BOOKS, RECORDS, FILES AND DOCUMENTS THAT CONSTITUTE RELIABLE SOURCES OF THE INFORMATION DESCRIBED HEREIN. LOGOS ARE FOR IDENTIFICATION PURPOSES ONLY AND MAY BE TRADEMARKS OF THEIR RESPECTIVE COMPANIES. NAI CAPITAL, INC. CAL DRE LIC. #02130474