

FOR LEASE | ALONG ALHAMBRA MEDICAL CORRIDOR

ALHAMBRA MEDICAL PLAZA

1315 Alhambra Boulevard
Sacramento, CA 95816

ALHAMBRA MEDICAL PLAZA

1315

TONY WHITTAKER
+1 916 492 6914
TONY.WHITTAKER@CBRE.COM
LIC. 01780828

JASON GOFF
+1 916 446 8222
JASON.GOFF@CBRE.COM
LIC. 01205230

NELLIE CRUZ
+1 916 492 6915
NELLIE.CRUZ@CBRE.COM
LIC. 02086140

CBRE

IRA
CAPITAL

PROPERTY HIGHLIGHTS



PROMINENT LOCATION along Sacramento's Alhambra medical corridor



WALKING DISTANCE to eateries, coffee shops, fitness, and other professional amenities



2ND GENERATION medical/dental office with accessible parking



BUILT: 1989 (Renovated in 1999)



STORIES: 3



RBA: 29,000 SF



TYPICAL FLOOR: 9,667 SF



ZONING: C-2-SPD



PARKING: On-site secured parking garage



ALHAMBRA MEDICAL PLAZA

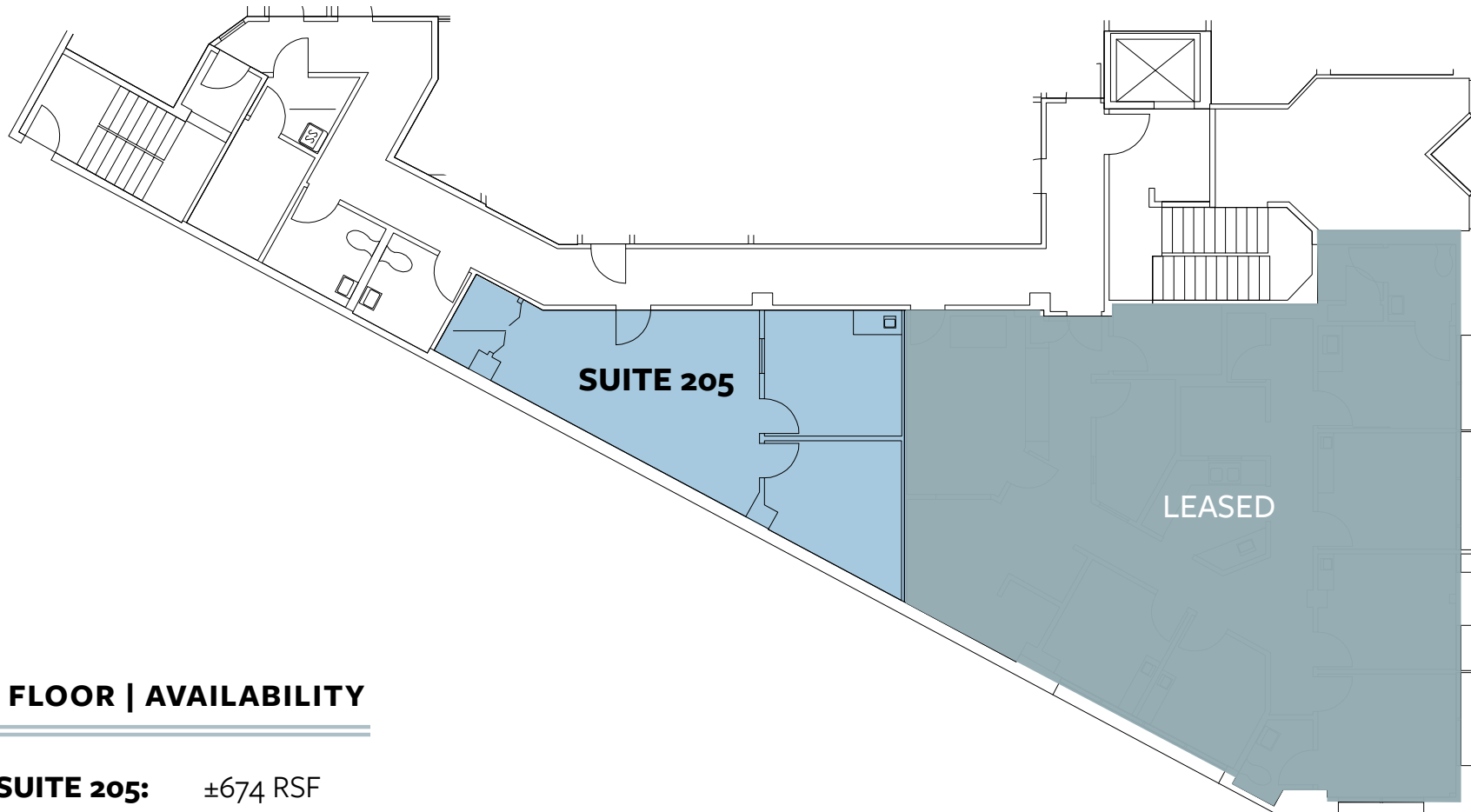
1315 Alhambra Boulevard | Sacramento, CA 95816

AVAILABLE SUITES

SUITE 205:	±674 RSF*
SUITE 300:	±1,843 RSF
SUITE 320A*:	±1,499 - 2,379 RSF
SUITE 320B*:	±880 - 2,379 RSF
<i>*Suites 320 A/B: ±2,379 RSF; 3rd Floor Total Contiguous Available: ±4,222 RSF</i>	

2ND GENERATION
DENTAL OPPORTUNITY

FLOOR PLAN | 2ND FLOOR

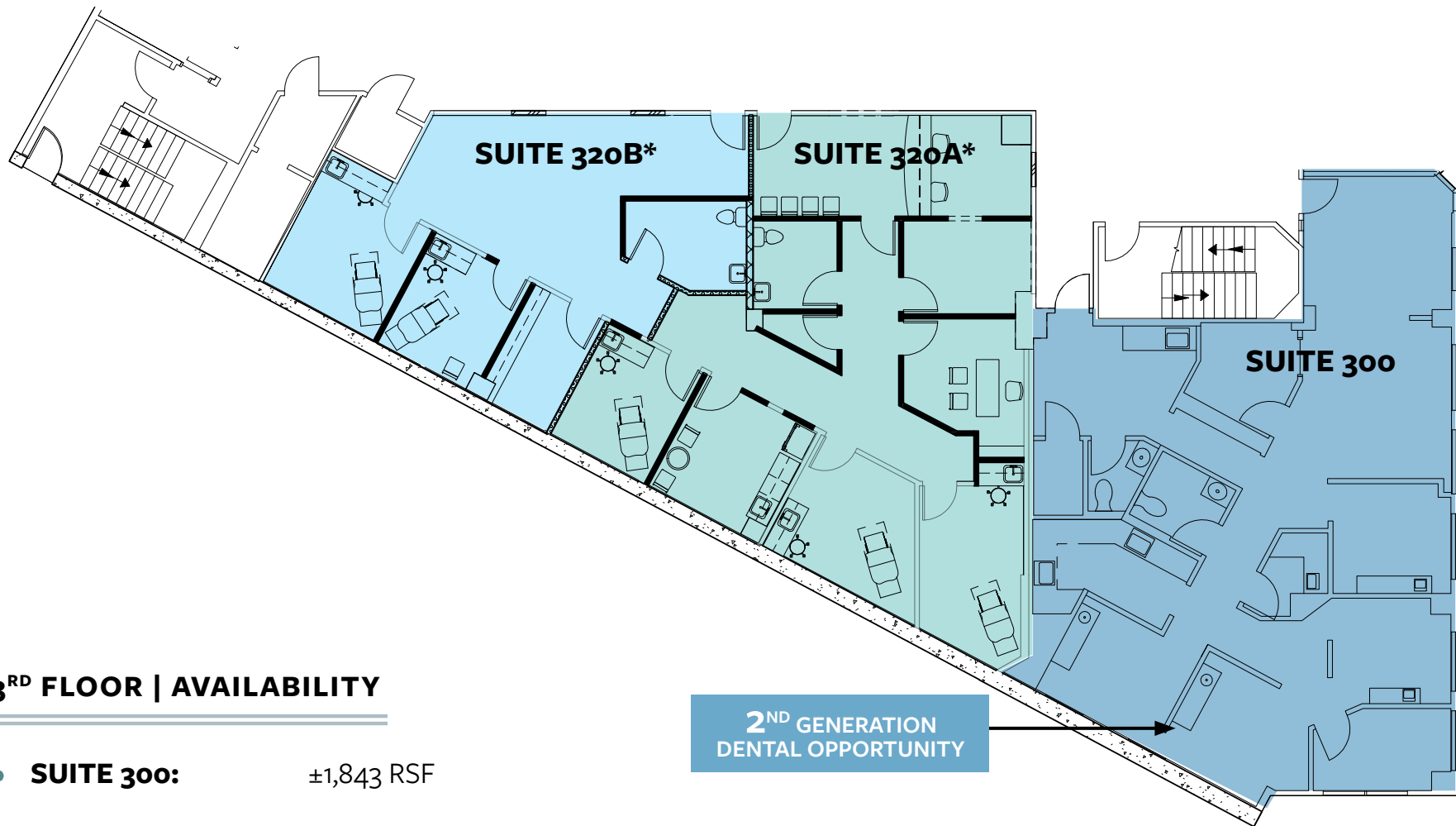


2ND FLOOR | AVAILABILITY

- **SUITE 205:** ±674 RSF

ALL MEASUREMENTS ARE APPROXIMATE.

FLOOR PLAN | 3RD FLOOR

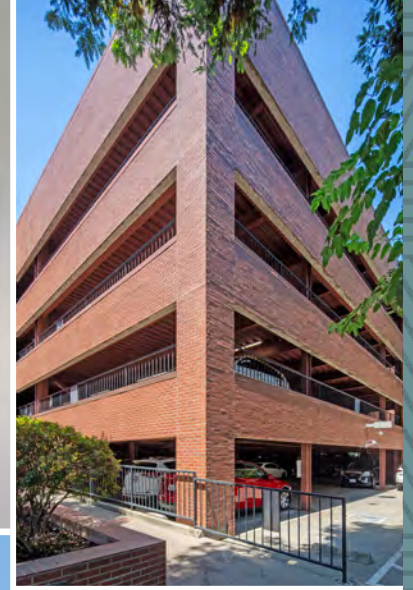


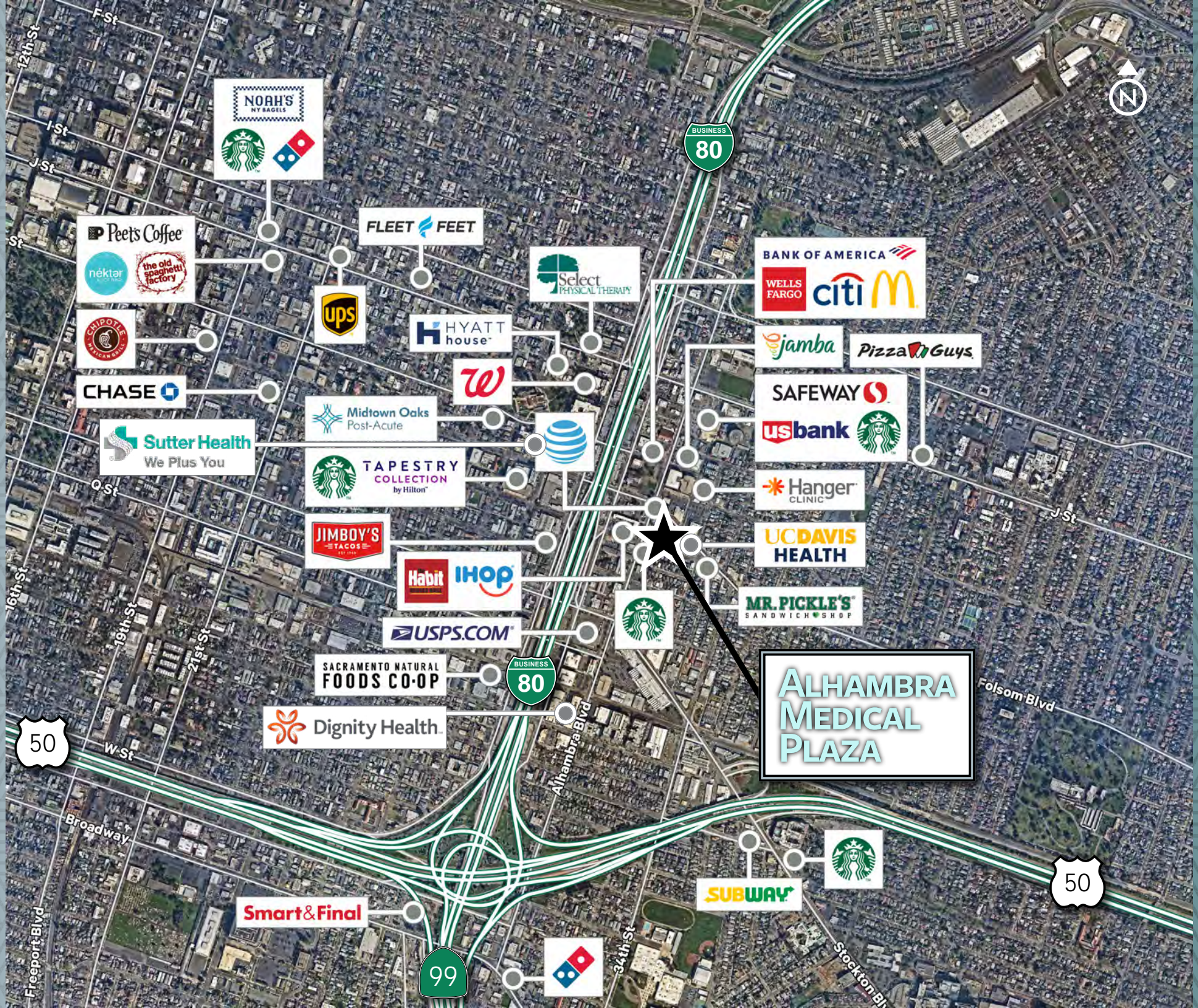
3RD FLOOR | AVAILABILITY

- **SUITE 300:** ±1,843 RSF
- **SUITE 320A*:** ±1,499 RSF
- **SUITE 320B*:** ±880 RSF

**Suites 320 A/B: ±2,379 RSF; 3rd Floor Total Contiguous Available: ±4,222 RSF*

ALL MEASUREMENTS ARE APPROXIMATE.





FOR LEASE | ALONG ALHAMBRA MEDICAL CORRIDOR

ALHAMBRA MEDICAL PLAZA

1315 Alhambra Boulevard | Sacramento, CA 95816

CONTACT US

CBRE

TONY WHITTAKER
SENIOR VICE PRESIDENT
+1 916 492 6914
TONY.WHITTAKER@CBRE.COM
LIC. 01780828

JASON GOFF
EXECUTIVE VICE PRESIDENT
+1 916 446 8222
JASON.GOFF@CBRE.COM
LIC. 01205230

NELLIE CRUZ
VICE PRESIDENT
+1 916 492 6915
NELLIE.CRUZ@CBRE.COM
LIC. 02086140



© 2025 CBRE, Inc. All rights reserved. This information has been obtained from sources believed reliable, but has not been verified for accuracy or completeness. You should conduct a careful, independent investigation of the property and verify all information. Any reliance on this information is solely at your own risk. CBRE and the CBRE logo are service marks of CBRE, Inc. All other marks displayed on this document are the property of their respective owners, and the use of such logos does not imply any affiliation with or endorsement of CBRE. Photos herein are the property of their respective owners. Use of these images without the express written consent of the owner is prohibited. PMStudio_June2025