



Accelerating success.

For Sale

Garrity Blvd

Nampa Municipal Airport

Victory Industrial Land 0 E. Victory Road | Nampa, ID

Mike Peña

208 472 1666
mike.pena@colliers.com

Bryant Jones

208 472 1663
bryant.jones@colliers.com

Lincoln Hagood

208 472 1667
lincoln.hagood@colliers.com

Property Overview

Property Type	Land
Land Size	52.02 Acres
Location	NWC of E. Victory Rd. & S. Grays Ln.
Parcel #	R3174601000
Zoning	Future use IL

Demos

	1 Miles	3 Miles	5 Miles
Population	7,680	60,487	125,561
Households	2,679	21,245	43,557
Avg. Income	\$72,804	\$72,021	\$79,057

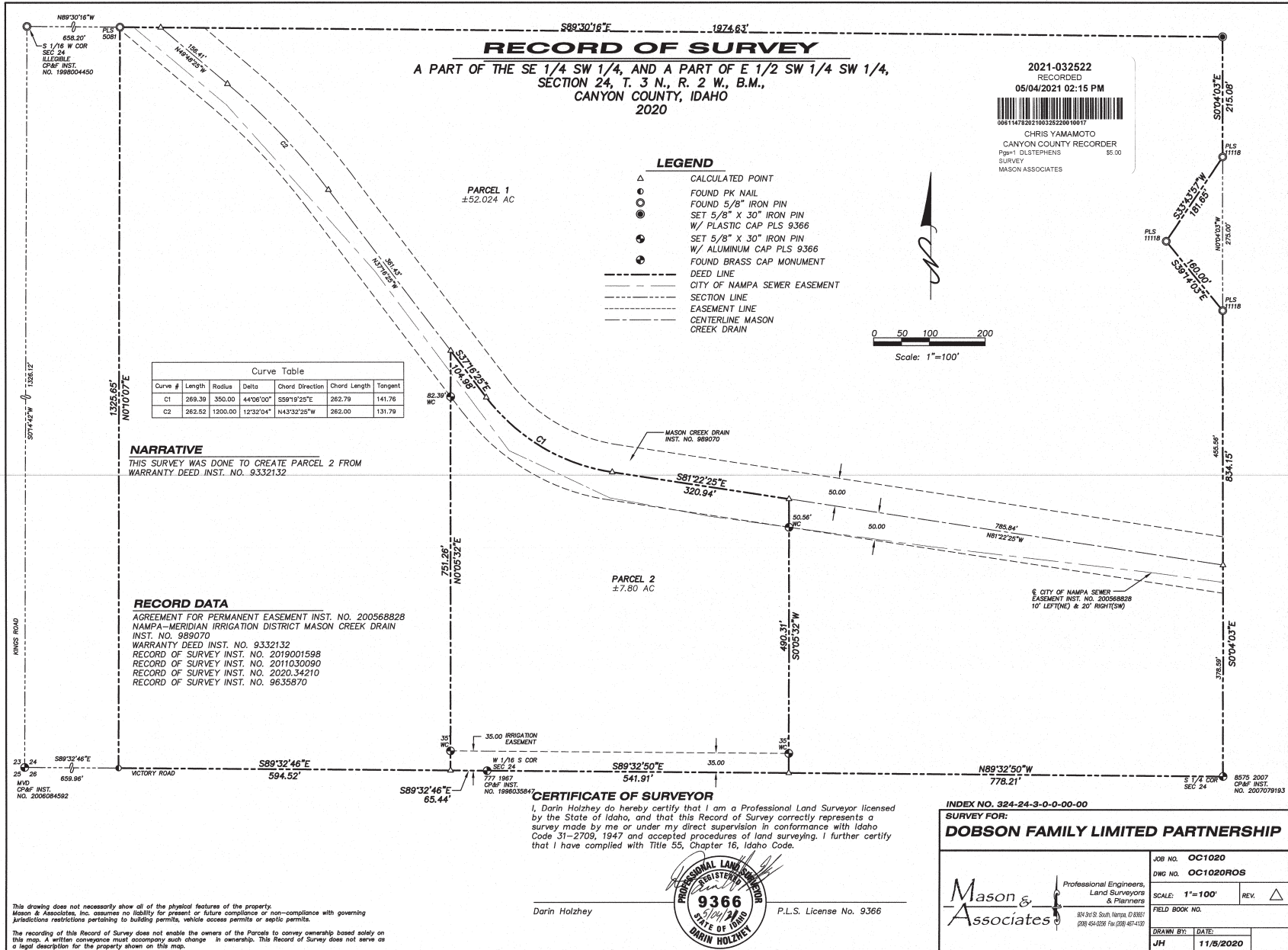
Price ~~\$12,000,000.00~~
\$9,500,000.00



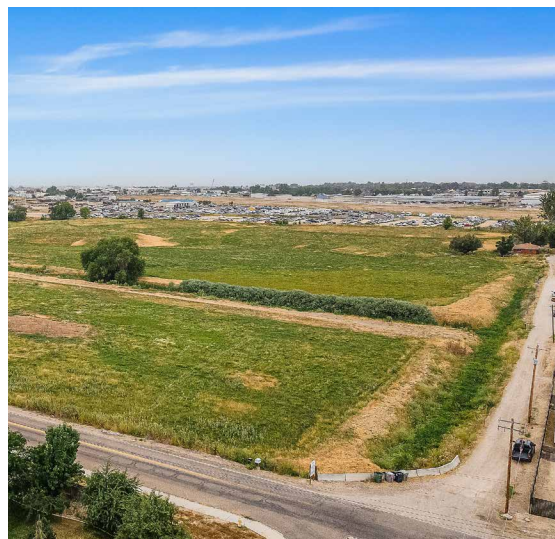
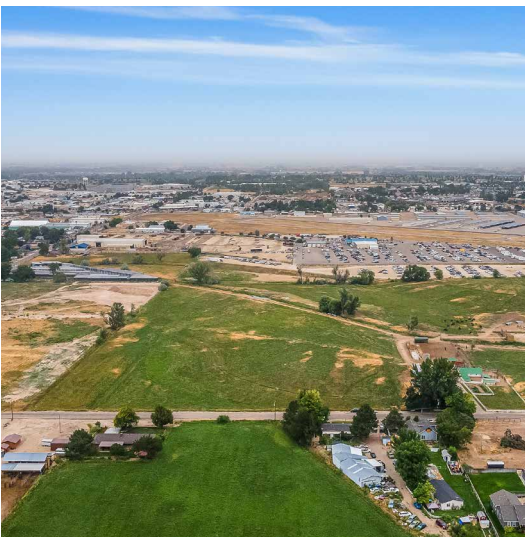
Key Highlights

- Rare 52 acre infill Industrial property
- City Services to site and sewer
- Future use IL zoning in City of Nampa
- 2.6 miles and ~ 6 minutes to I-84
- Mason Creek area in AE 100 year flood zone. Finished building floor to be 3' over 2,506 FEMA flood elevation. Buyer to confirm all information
- Contact agents for showing information

Survey



Property Photos

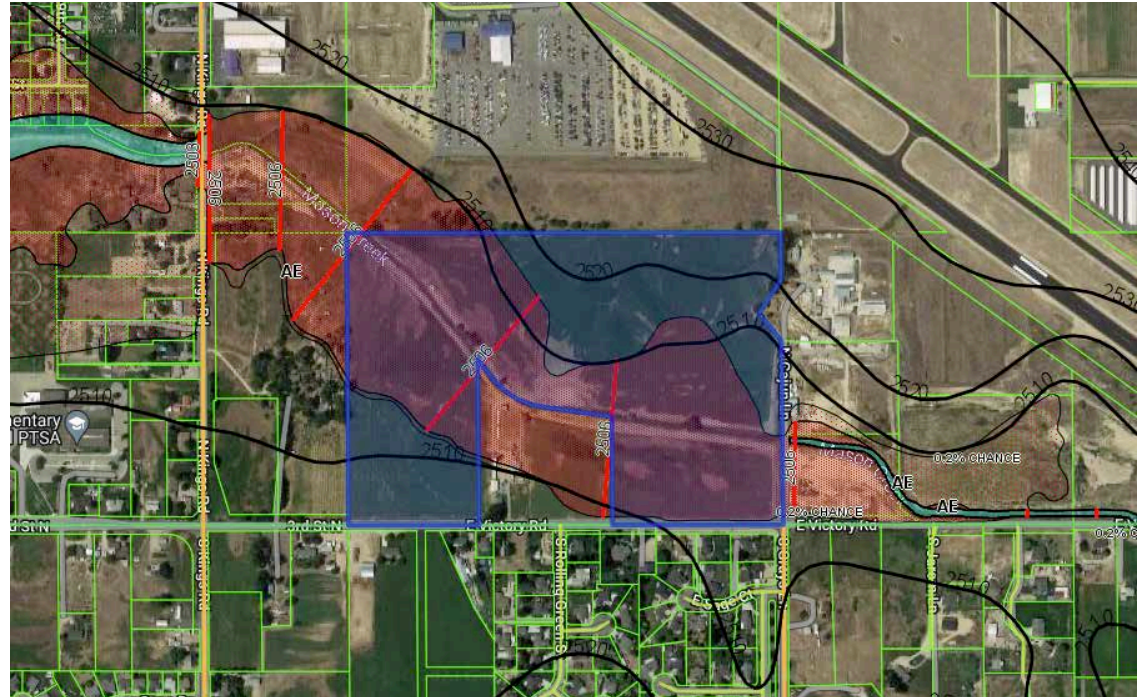
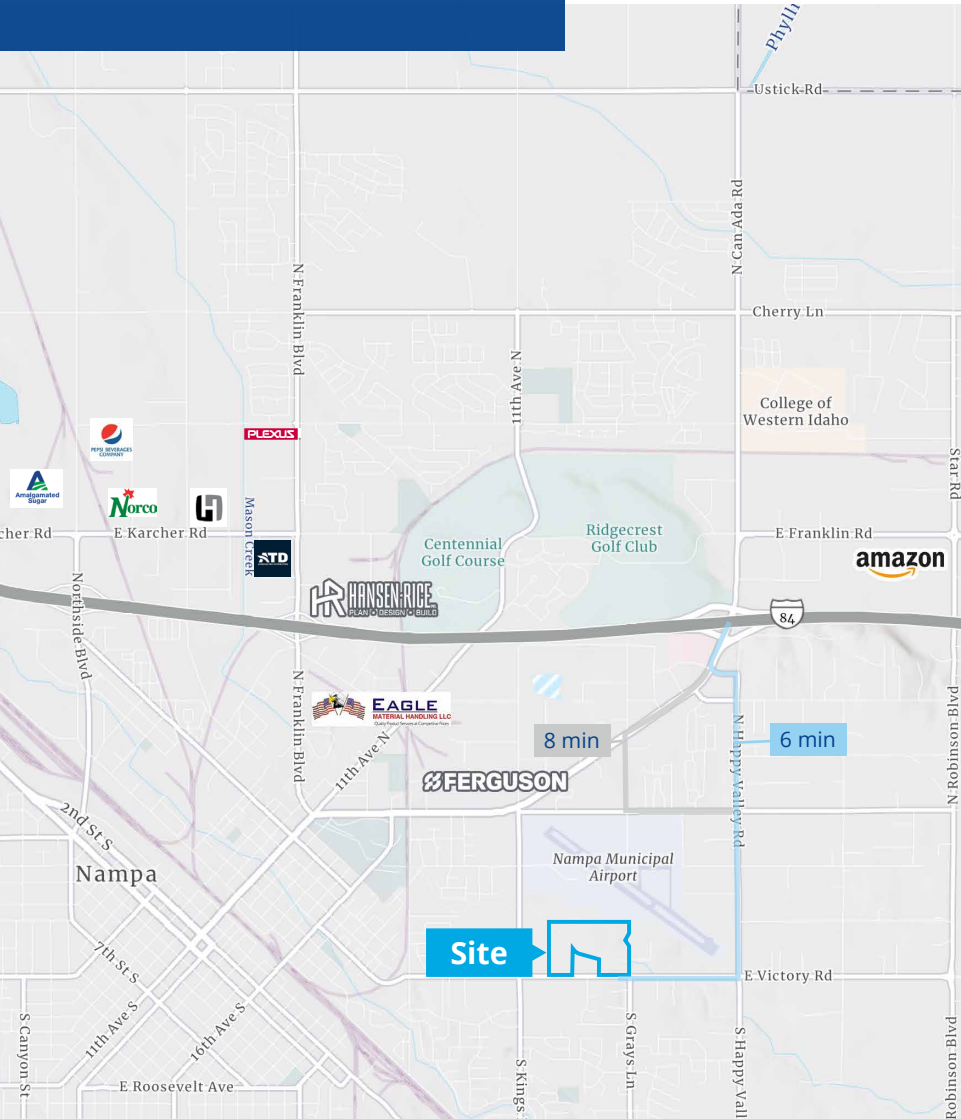


Watch aerial tour

Location

 [Google Map](#)

 [Street View](#)



5700 E Franklin Road, Suite 205
Nampa, Idaho 83686
208 472 1660
colliers.com/idaho

This document has been prepared by Colliers for advertising and general information only. Colliers makes no guarantees, representations or warranties of any kind, expressed or implied, regarding the information including, but not limited to, warranties of content, accuracy and reliability. Any interested party should undertake their own inquiries as to the accuracy of the information. Colliers excludes unequivocally all inferred or implied terms, conditions and warranties arising out of this document and excludes all liability for loss and damages arising therefrom. This publication is the copyrighted property of Colliers and /or its licensor(s). © 2024. All rights reserved. This communication is not intended to cause or induce breach of an existing listing agreement. Colliers Treasure Valley, LLC.