



### 497 NORTH VENTU PARK ROAD THOUSAND OAKS, CALIFORNIA 91320

#### OFFERING SUMMARY

Lease Rate:	Withheld
Building Size:	5,700 SF
Available SF:	832 SF
Lot Size:	0.49 Acres

#### Property Highlights

- Highly Visible Along Ventu Park Road / 101 Freeway
- Easy On/Off Freeway Access
- Full Frontage on Ventu Park Road
- Many Large Residential Sub-Divisions Minutes Away
- Many Industrial/Office Buildings Nearby
- Immediate Occupancy
- Lots Of Parking

#### Property Overview

Unit 497 is available for lease with immediate occupancy and is located on the corner of the building closest to Selvin's Restaurant.

#### Kevin Hamblin

Associate  
O: 805.277.4022  
C: 818.726.4656  
khamblin@naicapital.com  
CA DRE #01905116

#### Bruce A. Hamous, CCIM

Vice President  
O: 805.277.4023  
C: 818.636.8600  
bhamous@naicapital.com  
CA DRE #01073432

No warranty, express or implied, is made as to the accuracy of the information contained herein. This information is submitted subject to errors, omissions, change of price, rental or other conditions, withdrawal without notice, and is subject to any special listing conditions imposed by our principals. Cooperating brokers, buyers, tenants and other parties who receive this document should not rely on it, but should use it as a starting point of analysis, and should independently confirm the accuracy of the information contained herein through a due diligence review of the books, records, files and documents that constitute reliable sources of the information described herein. Logos are for identification purposes only and may be trademarks of their respective companies. NAI Capital Commercial, Inc. CAL DRE Lic. #02130474





### Kevin Hamblin

Associate

O: 805.277.4022

C: 818.726.4656

khamblin@naicapital.com

CA DRE #01905116

### Bruce A. Hamous, CCIM

Vice President

O: 805.277.4023

C: 818.636.8600

bhamous@naicapital.com

CA DRE #01073432

No warranty, express or implied, is made as to the accuracy of the information contained herein. This information is submitted subject to errors, omissions, change of price, rental or other conditions, withdrawal without notice, and is subject to any special listing conditions imposed by our principals. Cooperating brokers, buyers, tenants and other parties who receive this document should not rely on it, but should use it as a starting point of analysis, and should independently confirm the accuracy of the information contained herein through a due diligence review of the books, records, files and documents that constitute reliable sources of the information described herein. Logos are for identification purposes only and may be trademarks of their respective companies. NAI Capital Commercial, Inc. CAL DRE Lic. #02130474





### Kevin Hamblin

Associate

O: 805.277.4022

C: 818.726.4656

khamblin@naicapital.com

CA DRE #01905116

### Bruce A. Hamous, CCIM

Vice President

O: 805.277.4023

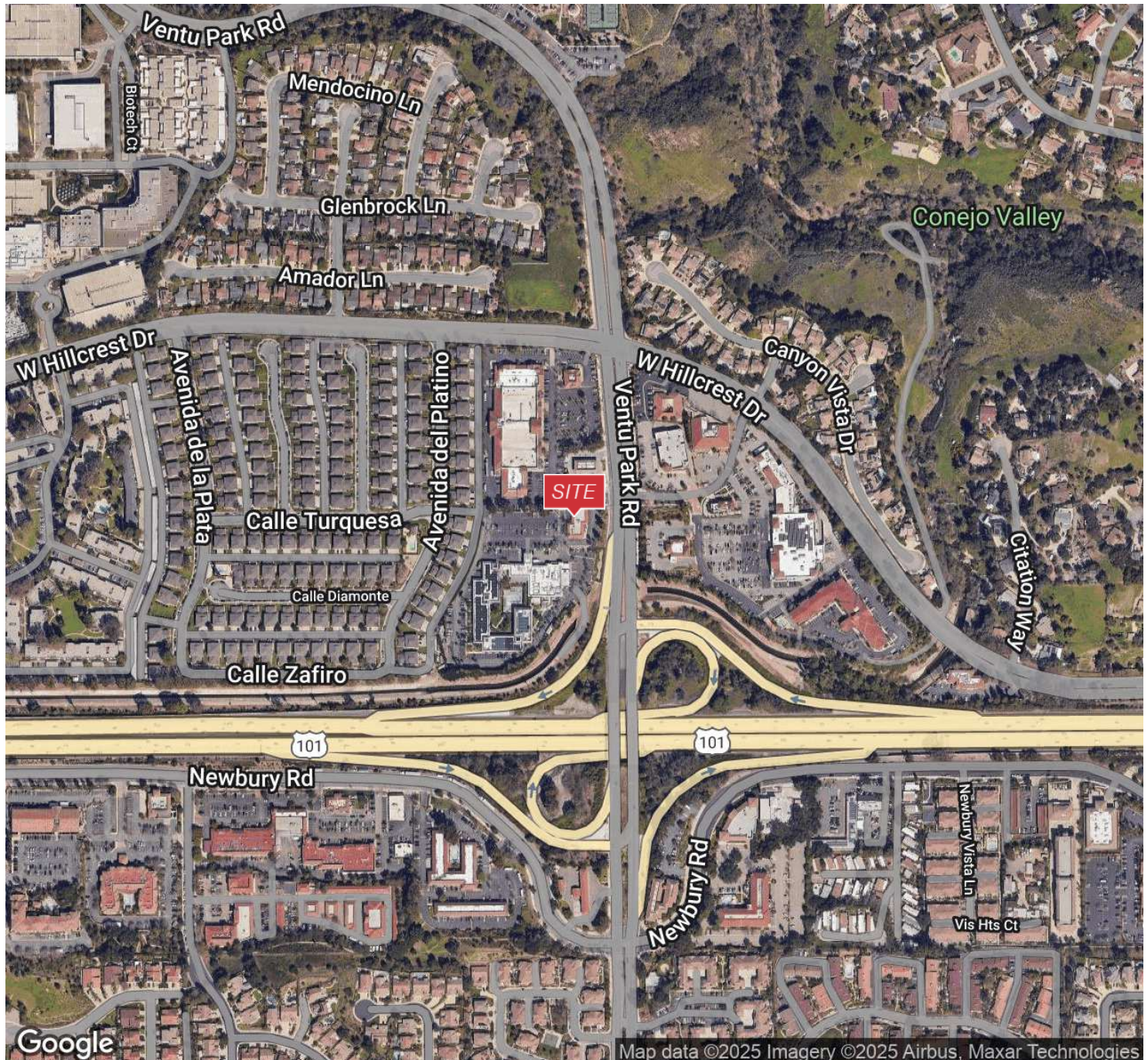
C: 818.636.8600

bhamous@naicapital.com

CA DRE #01073432

No warranty, express or implied, is made as to the accuracy of the information contained herein. This information is submitted subject to errors, omissions, change of price, rental or other conditions, withdrawal without notice, and is subject to any special listing conditions imposed by our principals. Cooperating brokers, buyers, tenants and other parties who receive this document should not rely on it, but should use it as a starting point of analysis, and should independently confirm the accuracy of the information contained herein through a due diligence review of the books, records, files and documents that constitute reliable sources of the information described herein. Logos are for identification purposes only and may be trademarks of their respective companies. NAI Capital Commercial, Inc. CAL DRE Lic. #02130474





### Kevin Hamblin

Associate

O: 805.277.4022

C: 818.726.4656

khamblin@naicapital.com

CA DRE #01905116

### Bruce A. Hamous, CCIM

Vice President

O: 805.277.4023

C: 818.636.8600

bhamous@naicapital.com

CA DRE #01073432

No warranty, express or implied, is made as to the accuracy of the information contained herein. This information is submitted subject to errors, omissions, change of price, rental or other conditions, withdrawal without notice, and is subject to any special listing conditions imposed by our principals. Cooperating brokers, buyers, tenants and other parties who receive this document should not rely on it, but should use it as a starting point of analysis, and should independently confirm the accuracy of the information contained herein through a due diligence review of the books, records, files and documents that constitute reliable sources of the information described herein. Logos are for identification purposes only and may be trademarks of their respective companies. NAI Capital Commercial, Inc. CAL DRE Lic. #02130474