



8670-8672
MELROSE
AVENUE

Carine Mamann
Vice Chairman
lic. 01734150
carine.mamann@cushwake.com
T. 310 595 2235

Kazuko Morgan
Executive Vice Chairman
lic. 01070005
kazuko.morgan@cushwake.com
T. 310 595 2235

Jay Luchs
Vice Chairman
lic. 01260345
jay.luchs@nmrk.com
T. 310 407 6585

 **CUSHMAN &
WAKEFIELD**
NEWMARK

PROPERTY DETAILS



USE

Retail



SIZE

Ground ± 4,400 SF
Second ± 4,150 SF
Total ± 8,550 SF



RENT

Available upon Request



PARKING

On-site parking available in rear
and ample street parking available
nearby



HIGHLIGHTS



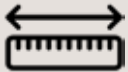
LOCATION

Located on the corner of Melrose Avenue and Huntley Drive



NEIGHBORS

Surrounded by high-end retail and restaurants



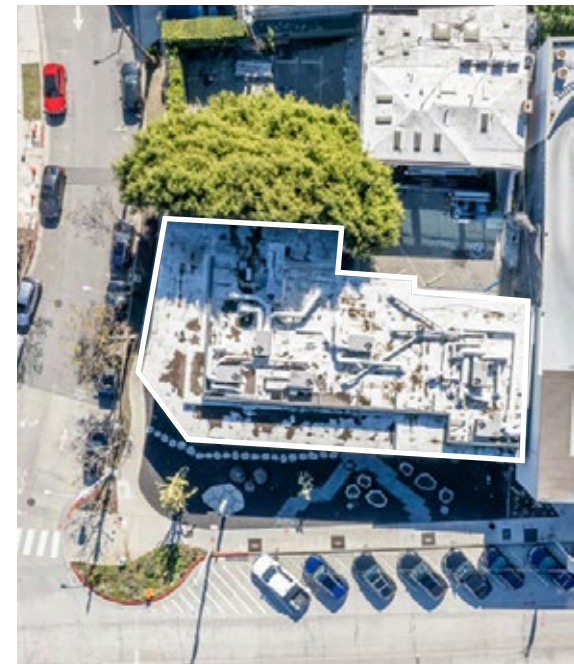
FRONTAGE

± 116' on Melrose Avenue
& ± 112' on Norwich Drive



PARKING

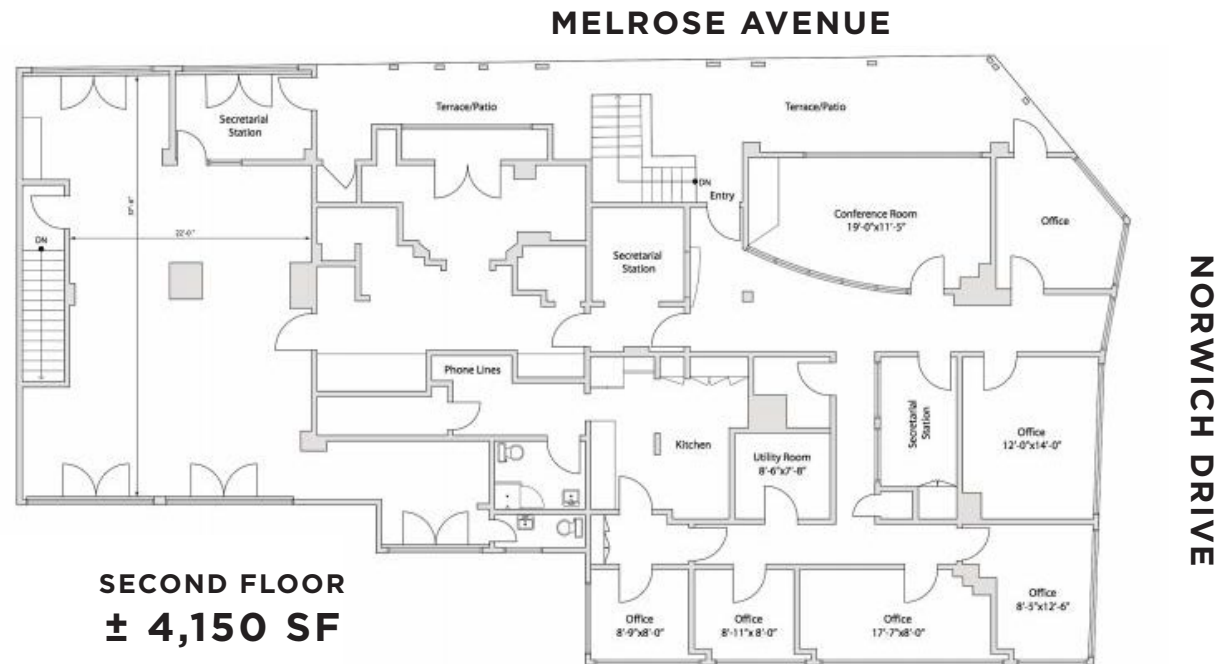
Gated rear parking lot accessible from Norwich Drive



FLOOR PLAN

Ground ± 4,400 SF
 Second ± 4,150 SF
Total ± 8,550 SF

*2nd Floor Terrace / Patio ± 450 SF



DEMOGRAPHICS



POPULATION

38,696
1 MILE

256,470
3 MILES

786,081
5 MILES



DAYTIME POPULATION

76,360
1 MILE

386,280
3 MILES

1,022,197
5 MILES



MEDIAN AGE

43
1 MILE

40
3 MILES

38
5 MILES



AVERAGE HOUSEHOLD INCOME

\$162,707
1 MILE

\$159,612
3 MILES

\$136,099
5 MILES



AERIAL

8670-8672
MELROSE
AVENUE

Ben Soleimani

WOVEN

FRÈRE

zinqe

HS Hamilton-Selway
Fine Art

FORMATIONS

Dennis & Leen

ANNE HAUCK

CECCONI'S
West Hollywood

Craig's

A BATHING
APE

EDDYBEE BEANES

THE BUTCHER'S
DAUGHTER

RE/DONE

JAMES PERSE

CATCH
saatva
THE SHAD
STORE

PDC
40 YEARS
PACIFIC DESIGN CENTER



The information contained herein has been obtained from sources deemed reliable but has not been verified and no guarantee, warranty or representation, either express or implied, is made with respect to such information. Terms of sale or lease and availability are subject to change or withdrawal without notice.

Carine Mamann
Vice Chairman
lic. 01734150
carine.mamann@cushwake.com
T. 310 595 2235

Kazuko Morgan
Executive Vice Chairman
lic. 01070005
kazuko.morgan@cushwake.com
T. 310 595 2235

Jay Luchs
Vice Chairman
lic. 01260345
jay.luchs@nrmk.com
T. 310 407 6585

 **CUSHMAN &
WAKEFIELD**
NEWMARK