



18837 Hawthorne Blvd.

Torrance, California 90504

Property Highlights

- Prominent end cap location with 68,000 CPD
- Excellent visibility in primary retail corridor in Torrance
- Strong demographics with spendable income
- Monument signage available
- Minutes from 405 freeway

Property Overview

Former animal rehabilitation center ideal for veterinary or general retail.

Offering Summary

Building Size:	29,917 SF
Available SF:	6,450 SF
Lot Size:	61,420 SF

Demographics

	1 Mile	2 Miles	3 Miles
Total Population	22,162	110,483	231,039
Average HHI	\$163.691	\$158.992	\$157.892

For More Information

Sheri Messerlian

O: 310 436 1762
smesserlian@naicapital.com | CalDRE #00450571

Ilmar Kalviste

O: 310 878 6923
ikalviste@naicapital.com | CalDRE #01331187



SOUTH BAY GALLERIA

macy's	McDonald's	Wendy's	Shoelace	Chavez's
Target	Nordstrom	Bath & Body Works	Foot Locker	
Kohl's	CVS	Ralphs	Starbucks	ISLANDS

**18837
HAWTHORNE
BLVD**

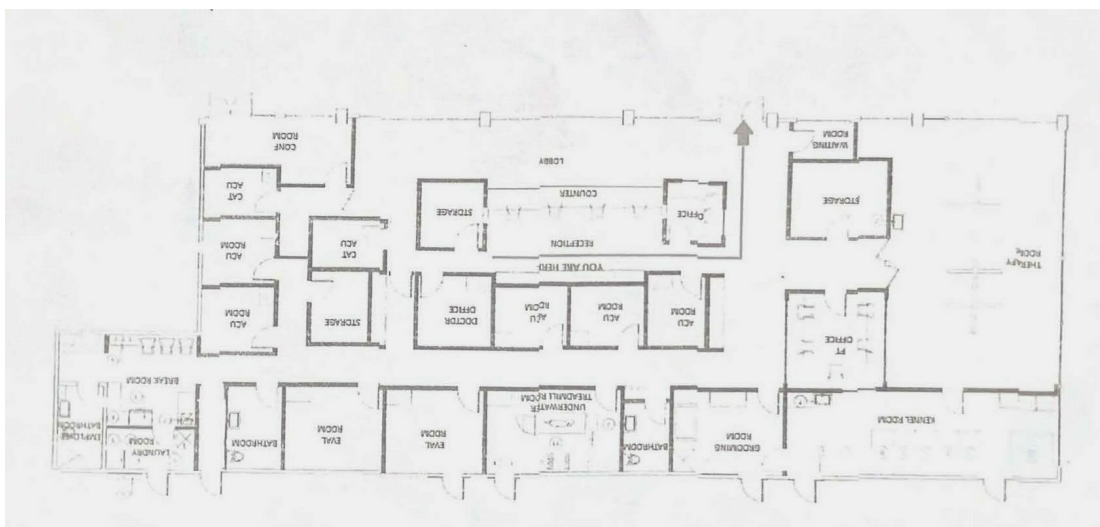
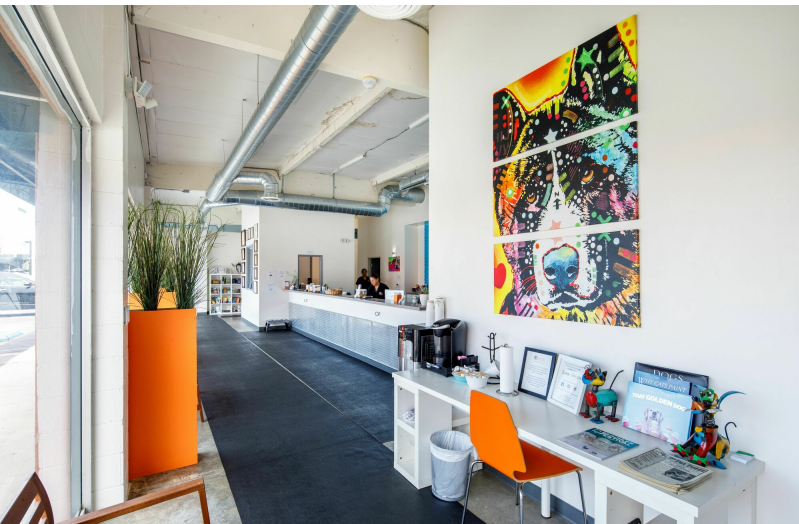
TORRANCE PROMENADE

Papa John's	Walmart	Trader Joe's	HomeGoods	Marshall's	Office Depot	Subway
ROSS	Party City	Durlington	In-N-Out			

DEL AMO FASHION CENTER

Nordstrom	macy's	OUTBACK
Old Navy	SEPHORA	PF Chang's
Barnes & Noble	JOANN	Crate & Barrel
JCPenney	Marshall's	LA FITNESS

No warranty, express or implied, is made as to the accuracy of the information contained herein. This information is submitted subject to errors, omissions, change of price, rental or other conditions, withdrawal without notice, and is subject to any special listing conditions imposed by our principals. Cooperating brokers, buyers, tenants and other parties who receive this document should not rely on it, but should use it as a starting point of analysis, and should independently confirm the accuracy of the information contained herein through a due diligence review of the books, records, files and documents that constitute reliable sources of the information described herein. Logos are for identification purposes only and may be trademarks of their respective companies. NAI Capital Commercial, Inc. CAL DRE Lic. #02130474



No warranty, express or implied, is made as to the accuracy of the information contained herein. This information is submitted subject to errors, omissions, change of price, rental or other conditions, withdrawal without notice, and is subject to any special listing conditions imposed by our principals. Cooperating brokers, buyers, tenants and other parties who receive this document should not rely on it, but should use it as a starting point of analysis, and should independently confirm the accuracy of the information contained herein through a due diligence review of the books, records, files and documents that constitute reliable sources of the information described herein. Logos are for identification purposes only and may be trademarks of their respective companies. NAI Capital Commercial, Inc. CAL DRE Lic. #02130474

970 W. 190th Street, Suite 100
 Torrance, CA 90502
 310 878 6900 tel
naicapital.com