

15± ACRES JUST OFF HWY. I-35 IN WELLINGTON

846 E. 20th St. S. | Wellington, KS 67152 in Sumner County



SALE PRICE
\$450,000.00

SITE SIZE
15± ACRES

2023 TAXES
GENERALS: \$2,968.76

PROPERTY HIGHLIGHTS

- 15± acres located just off Hwy. I-35 with highway frontage, and 5 minutes from downtown Wellington, KS.
- Possible rail access.

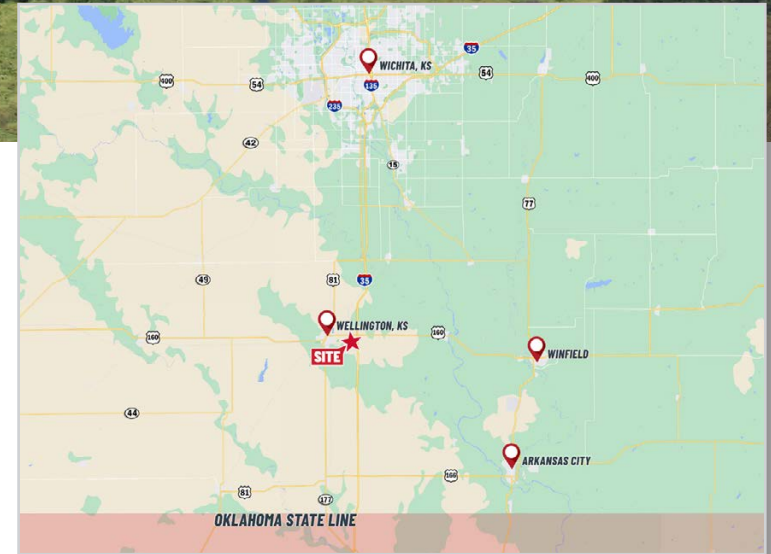
TRAVEL TIME

WICHITA, KS » 35 MINS. | OKLAHOMA CITY, OK » 2 HRS.



TRAFFIC COUNTS

APPROX. 11,116 VPD ALONG HWY. I-35



Offered exclusively by:

Kevin Howell |

316-292-3971 |

khowell@weigand.com

15± ACRES JUST OFF HWY. I-35 IN WELLINGTON

846 E. 20th St. S. | Wellington, KS 67152 in Sumner County



Offered exclusively by:

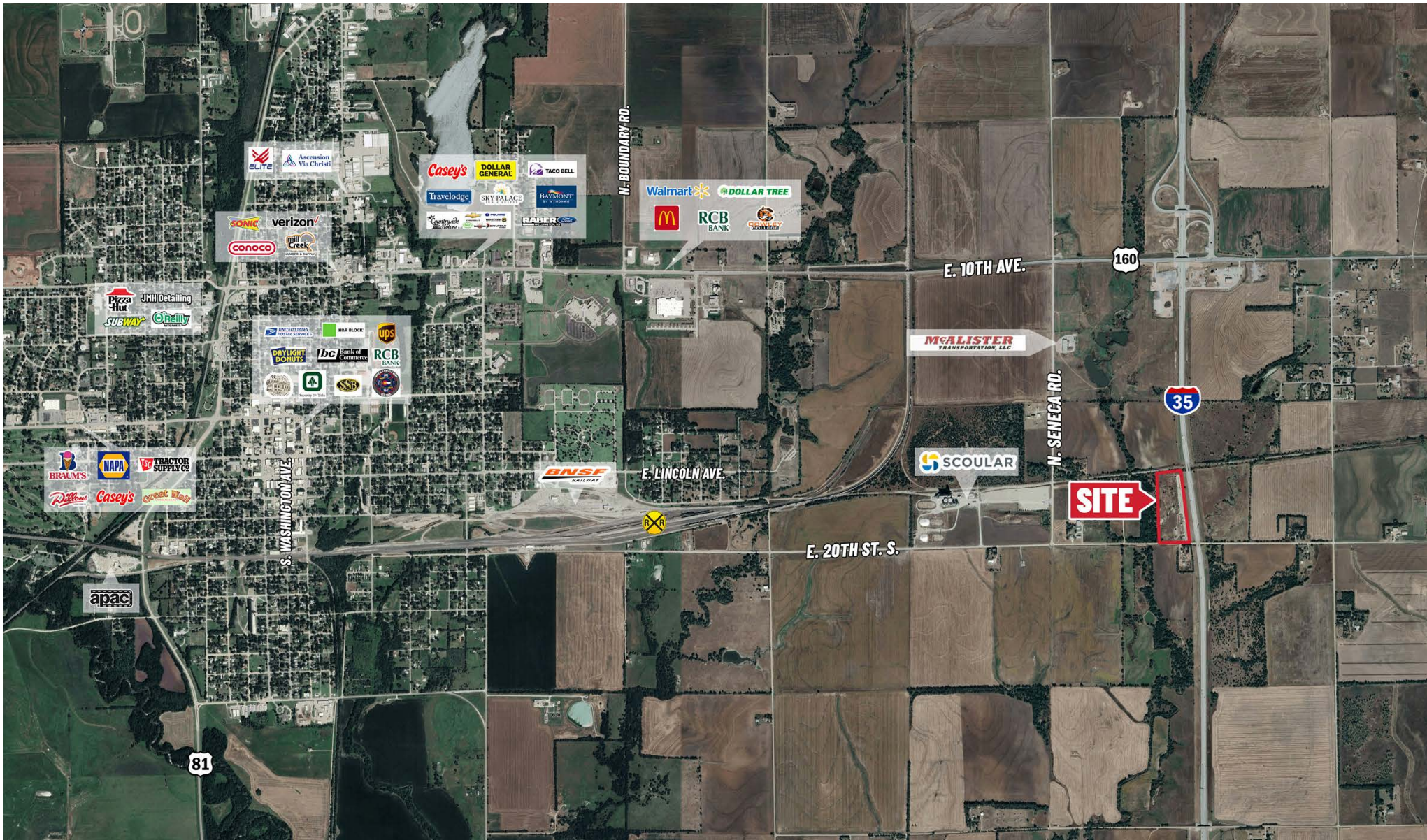
Kevin Howell |

316-292-3971 |

khowell@weigand.com

15± ACRES JUST OFF HWY. I-35 IN WELLINGTON

846 E. 20th St. S. | Wellington, KS 67152 in Sumner County



Offered exclusively by:

Kevin Howell |

316-292-3971 |

khowell@weigand.com