



Newburgh Professional Park 16824-16845 Newburgh Road Livonia, MI

FOR SALE / LEASE

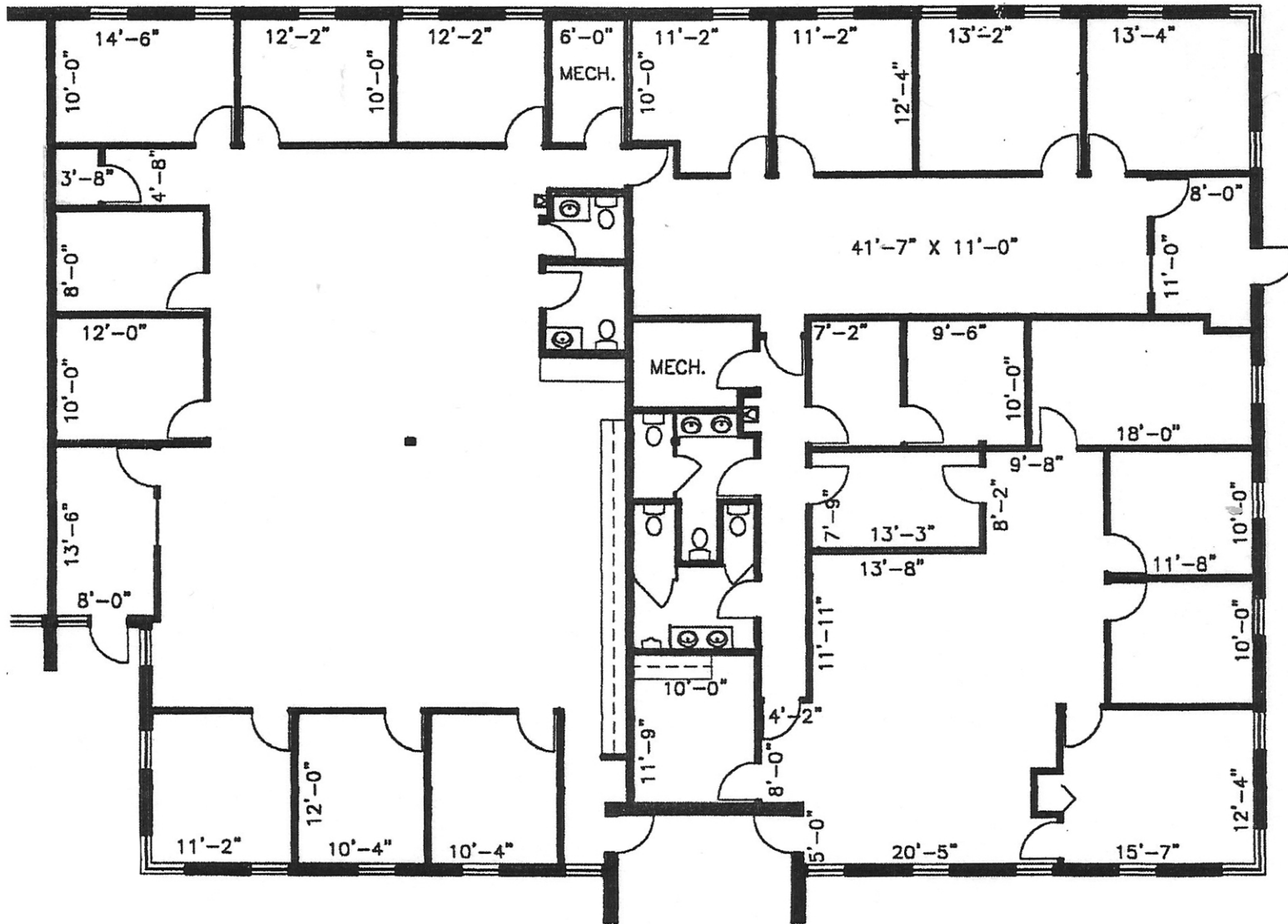
- West building: 16826-16824 Newburgh Road
- East building: 16836-16846 Newburgh Road
- Located on the east side of Newburgh Road, just south of 6 Mile
- Two building general and medical office park
- Two building total: 18,301 SF
- 116 parking spots for both buildings
- Most patients/patrons have immediate access to the tenant's entrance areas
- Lease available: 6,530 SF (can be divided)
- Lease rate: \$22/SF modified gross (plus utilities)
- 8.49% Cap Rate Owner User Potential
- \$200-\$250K NOI Owner User Potential
- Sale Price: \$2,500,000.00



CONTACT US
248-710-8000
691 N. Squirrel Rd, Suite 290
Auburn Hills, MI 48326
www.team-core.com



Philip A. Wojtowicz
Senior Vice President/
Associate Broker
Office: 248-710-8000
Cell: 248-408-2754
paw@team-core.com



DO NOT SCALE



16824 - 16845 Newburgh Rd.
 Pontiac, MI 48342
 DRAFT-Conceptual Split of Suite

2,000 - 6,530 SF
 For More Information Please Call:
 248.710.8000

