

FOR SUBLEASE



NORTHPARK I

11635 Northpark Drive | Wake Forest, NC 27587



CAPITAL
ASSOCIATES®

NORTHPARK I

11635 Northpark Drive | Wake Forest, NC 27587

PROPERTY TYPE	Medical Office
BUILDING SIZE	41,887 SF
LEASING RATE	\$36.00/SF
LEASE TYPE	Full Service Sublease
LEASE EXPIRATION	01/31/2027
YEAR BUILT	1996
COUNTY	Wake
LOCATION	Wake Forest, NC
FLOORS	3
PARKING	4.84/1000 SF



BRET MULLER
919.523.4200
bmuller@capitalassociates.com

WES JOHNSON
919.422.4853
wjohanson@capitalassociates.com



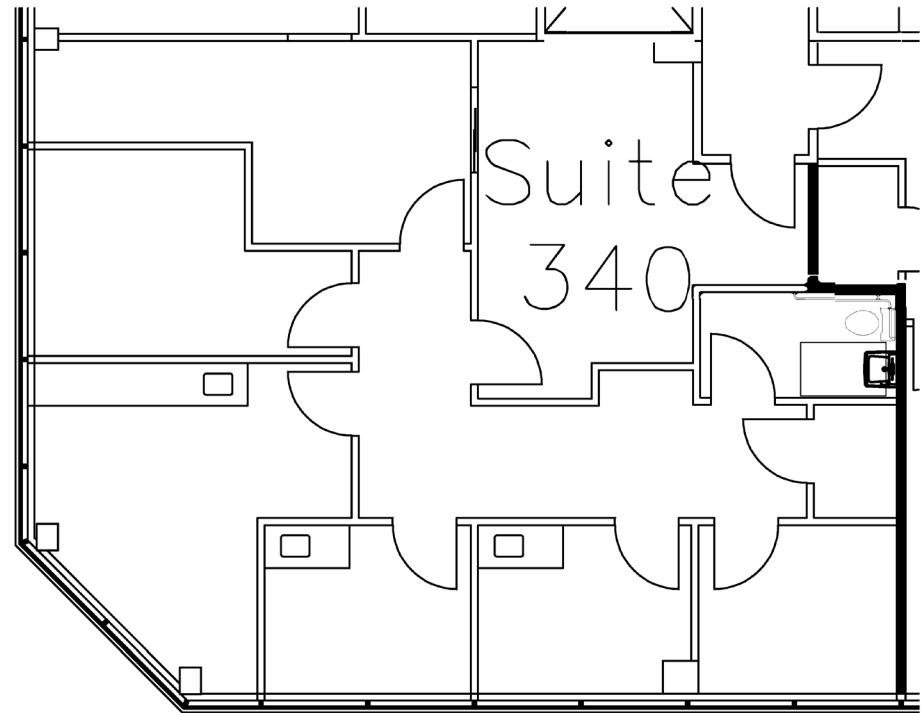
NORTHPARK I

11635 Northpark Drive | Wake Forest, NC 27587

AVAILABLE

Third Floor
Suite 340

1,363 SF



**CAPITAL
ASSOCIATES.**

BRET MULLER

919.523.4200

bmuller@capitalassociates.com

WES JOHNSON

919.422.4853

wjohnson@capitalassociates.com

NORTH PARK I

11635 Northpark Drive | Wake Forest, NC 27587

PROPERTY HIGHLIGHTS

Northpark I is a brick, window-lined 41,887 square foot three-story medical office building located in Wake Forest, NC.

- Conveniently located near the intersection of Hwy 98 Bypass and Hwy 1 (Capital Boulevard) and easily accessible from Wake Forest and surrounding areas.
- Within 2 miles of Rex Healthcare of Wakefield and many other medical providers.

BRET MULLER

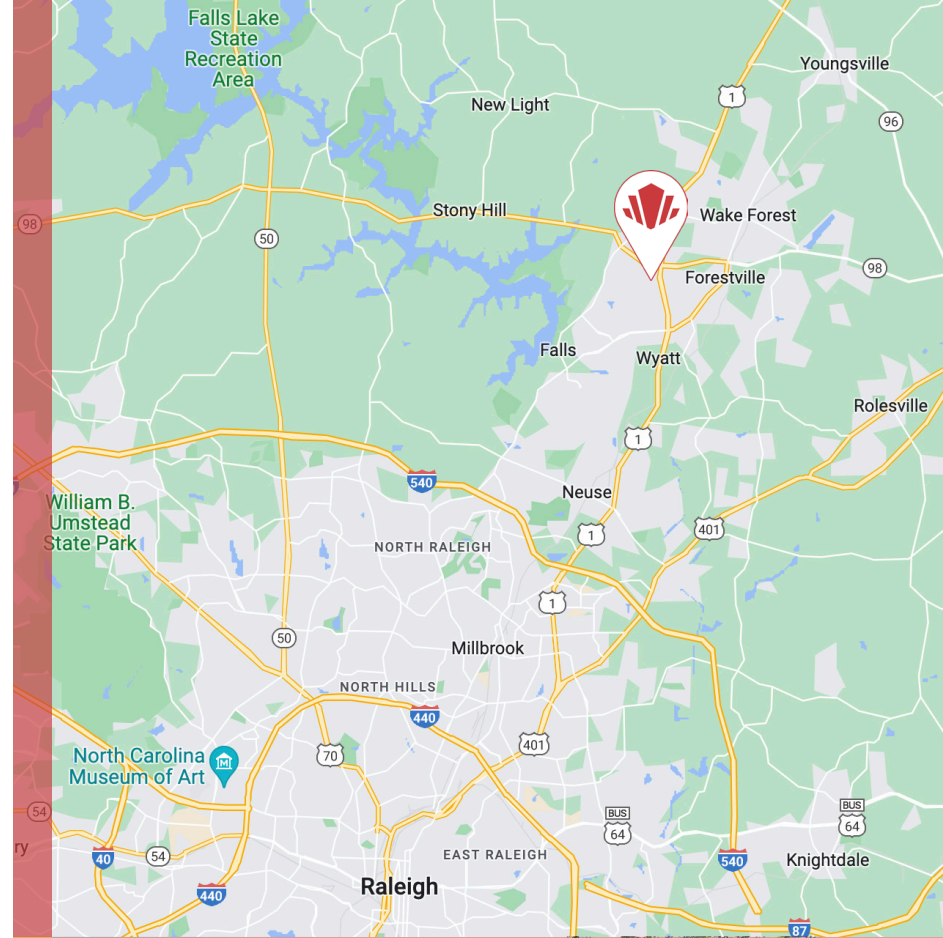
919.523.4200

bmuller@capitalassociates.com

WES JOHNSON

919.422.4853

wjohnson@capitalassociates.com



2 MILES FROM REX
HEALTHCARE OF
WAKEFIELD