



For Lease
Medical Office

West Medical Plaza

2222 S. 16th Street
Lincoln, NE

Property Features

- \$22.00/SF plus janitorial
- Hospital campus office buildings with close access to surgery and emergency room areas
- Adjoined access to all hospital rooms, departments and services
- Deck parking with enclosed sky-walk to building
- Covered patient drop-off
- Entrance attendants available for patient assistance
- On-site laboratory services
- Electronic access controlled entrance and overnight security checks
- Professional building management & maintenance

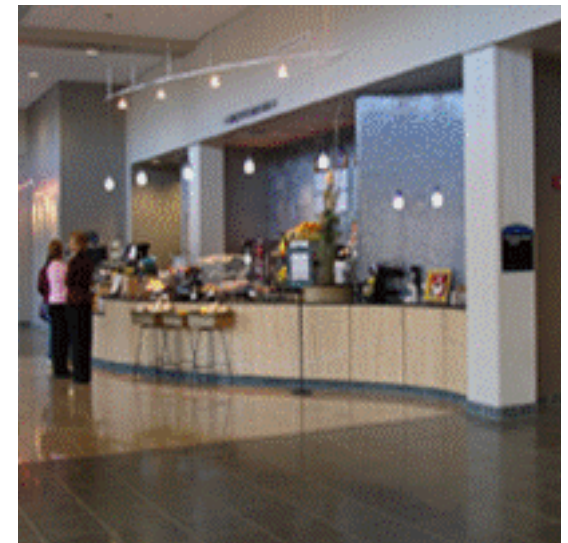
For more information:

Richard Meginnis, SIOR

402 441 5828 • rmeginnis@naifma.com

Michael Ball

402 441 5807 • mball@naifma.com



NO WARRANTY OR REPRESENTATION, EXPRESS OR IMPLIED, IS MADE AS TO THE ACCURACY OF THE INFORMATION CONTAINED HEREIN, AND THE SAME IS SUBMITTED SUBJECT TO ERRORS, OMISSIONS, CHANGE OF PRICE, RENTAL OR OTHER CONDITIONS, PRIOR SALE, LEASE OR FINANCING, OR WITHDRAWAL WITHOUT NOTICE, AND OF ANY SPECIAL LISTING CONDITIONS IMPOSED BY OUR PRINCIPALS NO WARRANTIES OR REPRESENTATIONS ARE MADE AS TO THE CONDITION OF THE PROPERTY OR ANY HAZARDS CONTAINED THEREIN ARE ANY TO BE IMPLIED.

1248 'O' Street, Suite 550
Lincoln, NE 68508
402 441 5800

naifmarealty.com

For Lease
Medical Office

West Medical Plaza

2222 S. 16th Street, Lincoln, NE



Suites Available

Tower B

| Suite | Available SF |
|-------|--------------|
| 415 | 1,856 |

For more information:

Richard Meginnis, SIOR

402 441 5828 • rmeginnis@naifma.com

Michael Ball

402 441 5807 • mball@naifma.com



1248 'O' Street, Suite 550
Lincoln, NE 68508
402 441 5800
naifmarealty.com

TOWER B FLOOR PLAN

