

DANIELS INDUSTRIAL PARK

12960 COMMERCE LAKES DR

FORT MYERS, FL 33913

Industrial Condos For Lease

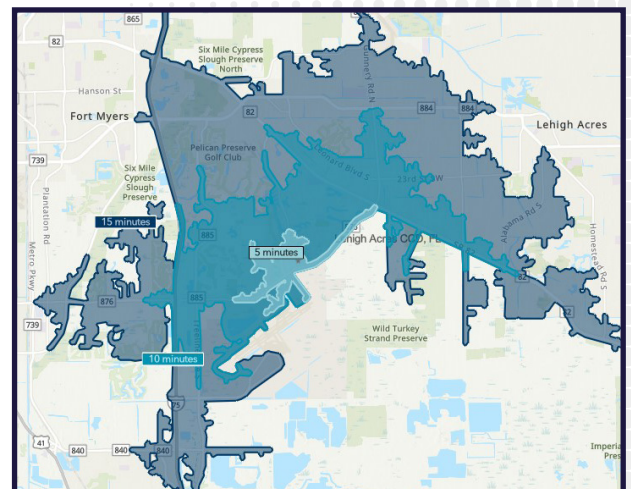


PROPERTY HIGHLIGHTS

- Located just off I-75
- Professionally Managed
- Ample Parking
- 25' Clear Height
- Monument Signage

Leasing Details

Lease Rate	\$17.00 Gross
Unit Size	2,900 SF
Zoning	MPD
Year Built	2007
Submarket	S Fort Myers / San Carlos



12960 COMMERCE LAKES DR

FORT MYERS, FL 33913

Unit Information

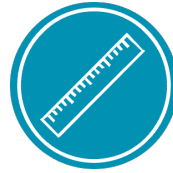
Unit	Location	Unit Size	Lease Rate	Monthly Total	Sales Tax Not Included
Unit A29	End Cap	2,900 SF	\$17.00 Gross	\$4,108.33	



**PROFESSIONALLY
MANAGED**



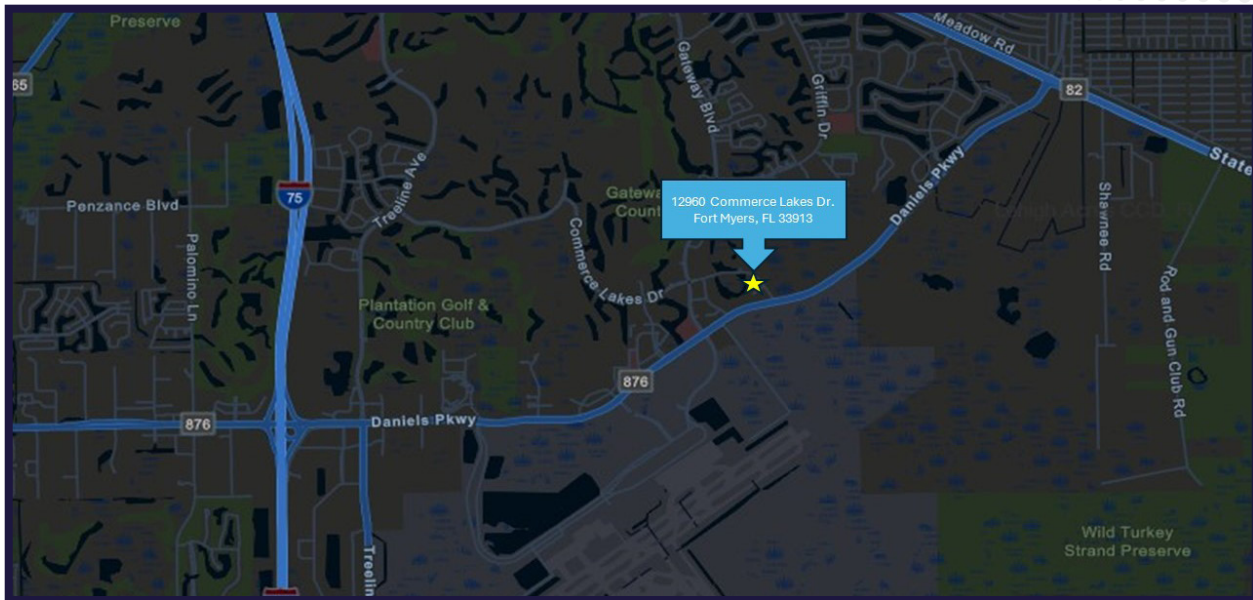
**POWER
3-phase**



**CLEAR HEIGHT
25'**



**DRIVE-IN
DOORS
12'x14'**



GARY TASMAN
CEO & Principal Broker
+1 239 489 3600
gtasman@cpswfl.com



GRETCHEN SMITH
Senior Director
+1 239 489 3600
gsmith@cpswfl.com