



Rare Freestanding Office Building

9254 Bendix Road
Columbia , MD

Rick Williamson

Managing Director

rick.williamson@jll.com

+1 410 878 4806

Rob Freedman

Managing Director

rob.freedman@jll.com

+1 410 952 9444

Dominic Digiovannantonio

Vice President

dom.digi@jll.com

+1 443 452 1505

9254 Bendix Road,
Columbia , MD

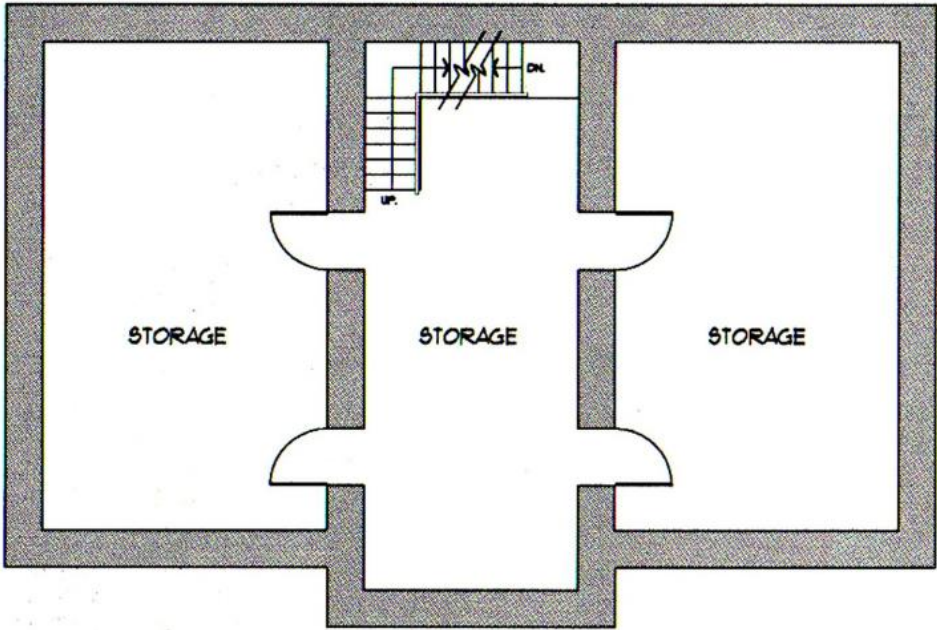
Property information

- Sale price: \$1.9 mm
- First and second floor size (excluding basement and loft in calculations) is 6,041 sf
- Zoning: POR (Planned Office Research)
- Centrally located, campus like setting
- Adjacent to Howard County Circuit Court
- Convenient access to Route 108, Route 29, and Route 100
- Abundant surface parking
- Close proximity to an array of amenities

9254 Bendix Road,
Columbia , MD



9254 Bendix Road,
Columbia , MD

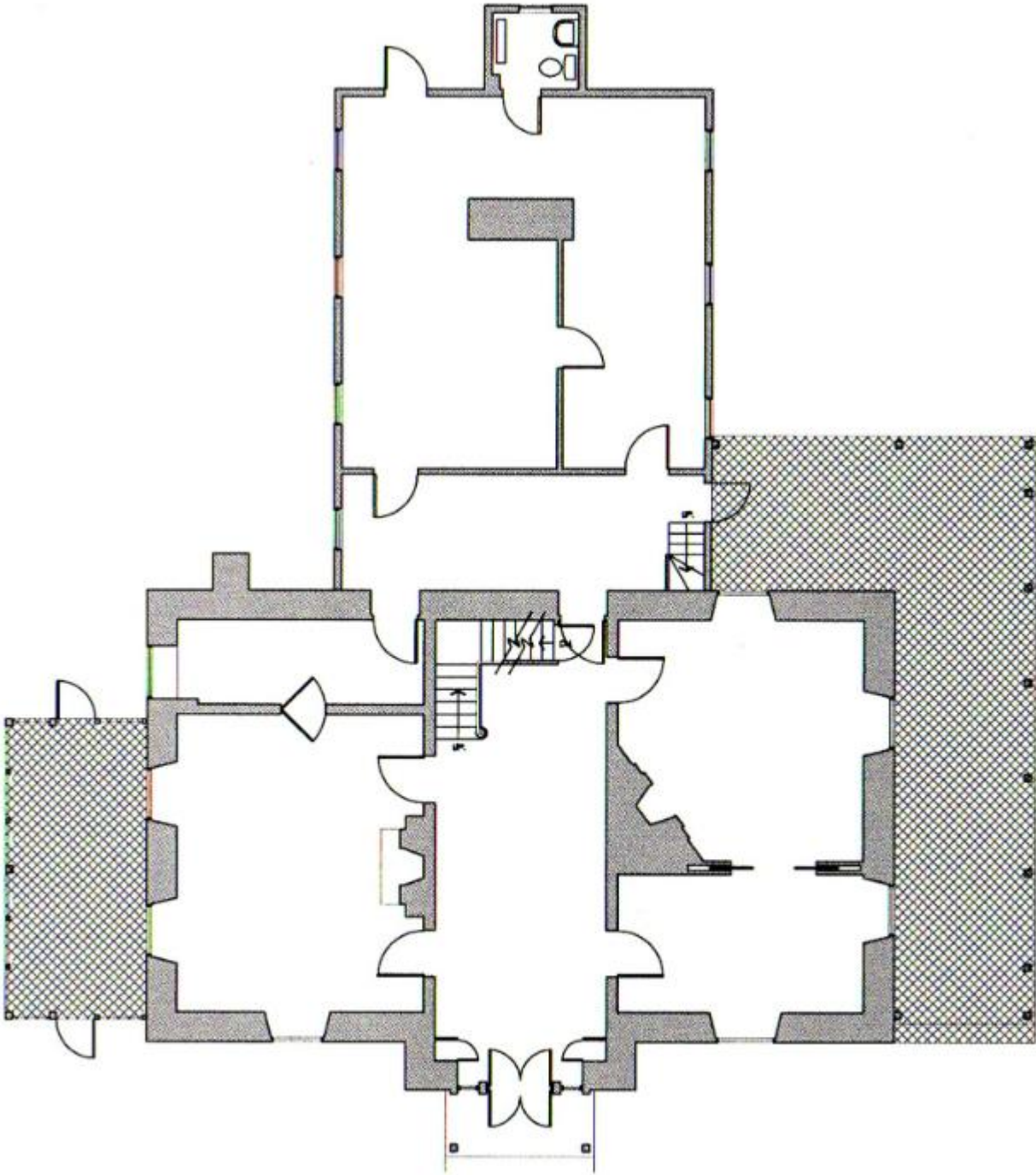


BASEMENT FLOOR PLAN

1,329 +/- G.S.F

o o o o o o o o

9254 Bendix Road,
Columbia, MD

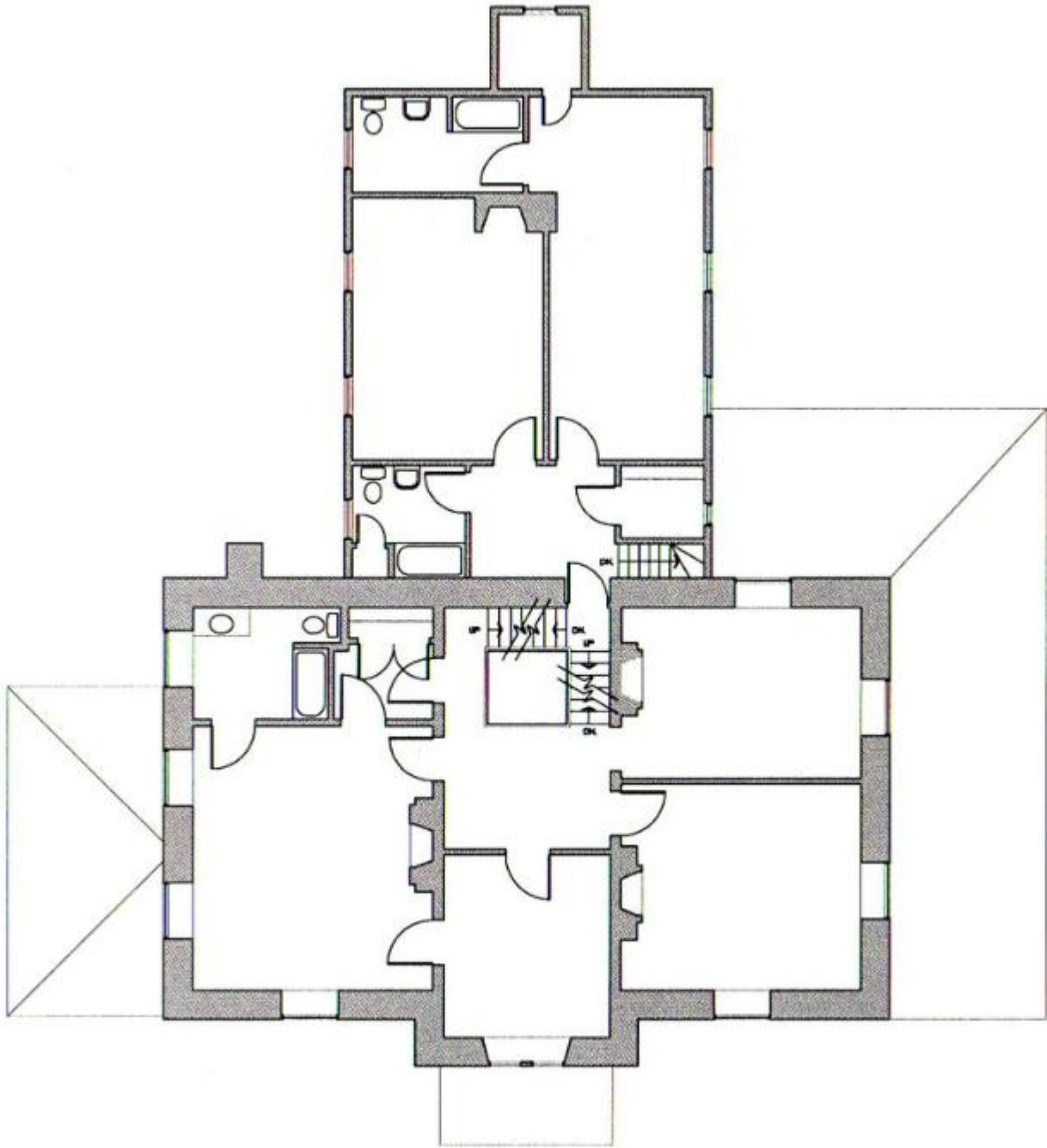


FIRST FLOOR PLAN

3,420 +/- G.S.F

0 0 0 0 0 0 0 0 0 0

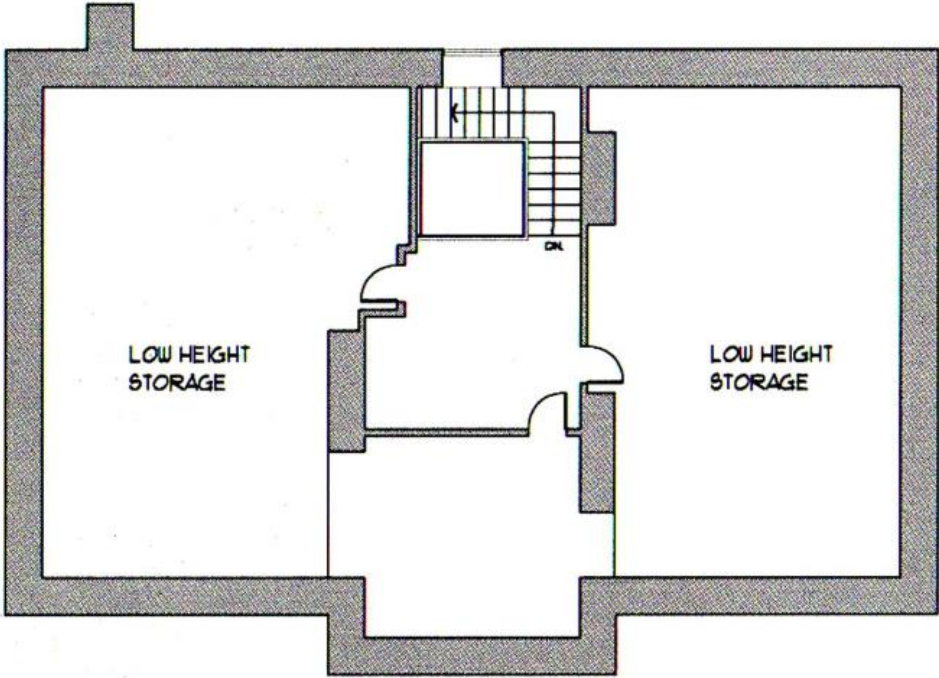
9254 Bendix Road,
Columbia , MD



SECOND FLOOR PLAN

2,621 +/- G.S.F

9254 Bendix Road,
Columbia, MD



LOFT FLOOR PLAN

1,329 +/- G.S.F

Location Map



Rick Williamson
Managing Director
rick.williamson@jll.com
+1 410 878 4806

Rob Freedman
Managing Director
rob.freedman@jll.com
+1 410 952 9444

Dominic Digiovannantonio
Vice President
dom.digi@jll.com
+1 443 452 1505

Although information has been obtained from sources deemed reliable, JLL does not make any guarantees, warranties or representations, express or implied, as to the completeness or accuracy as to the information contained herein. Any projections, opinions, assumptions or estimates used are for example only. There may be differences between projected and actual results, and those differences may be material. JLL does not accept any liability for any loss or damage suffered by any party resulting from reliance on this information. If the recipient of this information has signed a confidentiality agreement with JLL regarding this matter, this information is subject to the terms of that agreement. ©2024 Jones Lang LaSalle Brokerage, Inc. All rights reserved.