

# LITTLETON PROFESSIONAL BUILDING

# AVAILABLE

## OFFICE SPACES



**709 W Littleton Blvd**  
Littleton, CO 80110

## UNITS AVAILABLE


**Suite 103:** \$595/month (196 sqft)

**Suite 103 & Reception:** \$800 (~438 sqft)

**Suite 25:** \$560 (250 sqft)

Exceptional value in a building that was newly acquired and is under new management, with retro style updated interior common areas, exterior and landscaping. Get in prior to prices rising in the immediate area. Minutes from hip Littleton Downtown directly between Broadway and Santa Fe for easy access across the city. Walking distance to parks, restaurants and one block to the new Cherry Cricket Littleton.

CHRIS LAMEE  
*Broker/Owner*

 (303) 748-3843

 [chris@banyanrealestate.com](mailto:chris@banyanrealestate.com)

# LITTLETON PROFESSIONAL BUILDING

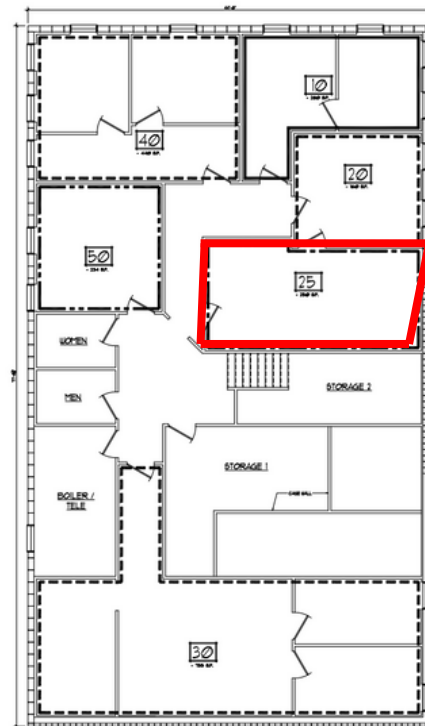


## Suite 103

Suite 103 - \$595/mos

Suite 103 & Reception - \$800/mos

Lease a private office in a shared suite or an office and a reception area in a shared suite



## Suite 25

Suite 25 - \$560/mos

Lease a private office on lower level



\*Square footage numbers are BOMA measurements with a common area factor. All information is considered reliable but not guaranteed.

CHRIS LAMEE  
*Broker/Owner*



(303) 748-3843



chris@banyanrealestate.com