

As exclusive agent, Signature Partners, LLC is pleased to present the following retail space for lease:

3534 Riverdale Avenue

At the corner of 236th Street • PRIME MEDICAL / COMMUNITY USE SPACE FOR LEASE

<u>PREMISES</u>	<u>APPROX AREA</u>	<u>RENTAL</u>	<u>UTILITIES</u>	<u>TERM</u>	<u>POSSESSION</u>
Partial Ground Floor	1,220 RSF	Upon Request	Directly Metered	5 - 10 years	Immediate



- Renovated Medical/Community Use Space For Lease
- Five offices and reception
- Light from street and courtyard windows
- Energy efficient LED lighting
- 2 bathrooms, 1 ADA compliant
- Washer and Dryer in unit
- Tenant controlled heat and A/C
- All utilities directly metered
- 8 1/2 foot high ceiling
- Riverdale Avenue frontage with signage
- Central to thousands of high-net-worth residents of Fieldston / Riverdale
- Up to 4 dedicated parking spaces available

PERFECT FOR ANY MEDICAL SPECIALTY

WWW.SIGNATUREPARTNERS.COM/3534-RIVERDALE-AVE



Call For Details:

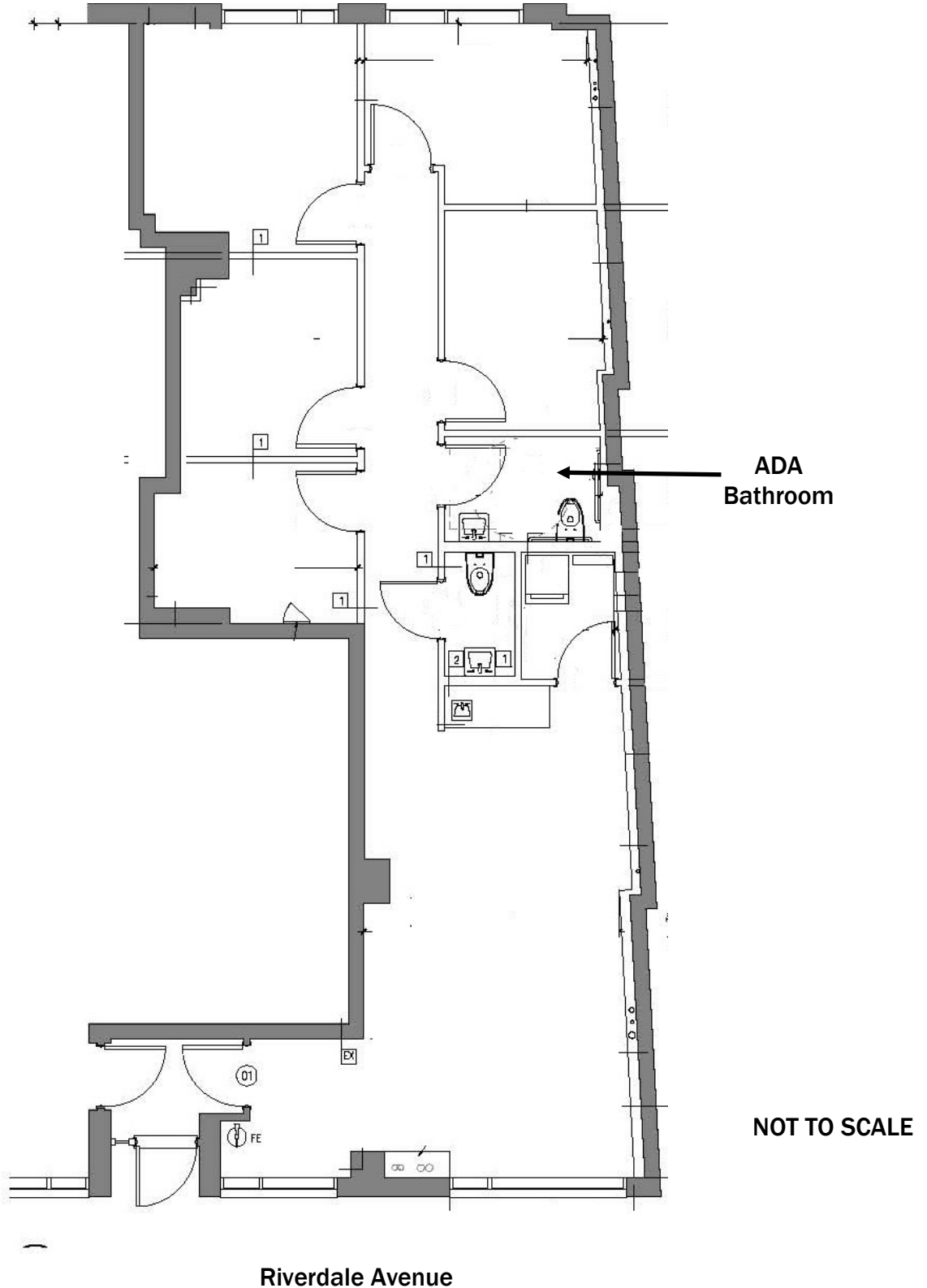
Michael Pinney
Managing Director
212.813.3573

pinney@signaturepartners.com

No warranty or representation, express or implied, is made as to the accuracy of the information contained herein, and the same is submitted subject to errors, omissions, changes of price, rental or other conditions, withdrawal without notice, and to any special conditions imposed by our principals.

3534 Riverdale Avenue

At the corner of 236th Street • PRIME MEDICAL/COMMUNITY USE SPACE FOR LEASE



Michael Pinney
Managing Director
212.813.3573
pinney@signaturepartners.com