

AVAILABLE FOR SALE
PROFESSIONAL OFFICE SPACE & LAND

2317 JENSEN AVENUE

SANGER, CA

NEWMARK
PEARSON COMMERCIAL

Nick Sorensen
Vice President - Office Division
t 559-447-6240
nsorensen@pearsonrealty.com
CA RE Lic. #02081137

Independently Owned and Operated | Corporate License #00020875 | newmarkpearson.com

FRESNO OFFICE: 7480 N. Palm Ave. #101, Fresno, CA 93711, t 559-432-6200 | **VISALIA OFFICE:** 3447 S. Demaree St., Visalia, CA 93277, t 559-732-7300

The distributor of this communication is performing acts for which a real estate license is required. The information contained herein has been obtained from sources deemed reliable but has not been verified and no guarantee, warranty or representation, either express or implied, is made with respect to such information. Terms of sale or lease and availability are subject to change or withdrawal without notice.

2317 JENSEN AVENUE

SANGER, CA

PROPERTY INFORMATION

This medical building is located on Jensen Avenue just East of Bethel Avenue. Located across the street from the former Sanger General Hospital this medical building brings visibility and convenience. With new retail development and national tenants nearby this office has plenty of ancillary services.

BUILDING INFORMATION

| | |
|-----------------------|---------------------------------------|
| Building Size: | 1,851± SF |
| Lot Size: | 11,800± SF |
| Tenancy: | Single |
| Occupancy: | 0% |
| Year Built: | 1998 |
| Parking: | 7 stalls + 3 covered stalls |
| Zoning: | CP (<i>Commercial Professional</i>) |
| APN: | 315-101-62 (<i>Fresno County</i>) |
| Buildout: | Full Medical Build-Out |

LAND INFORMATION

| | |
|------------------|-------------------------------------|
| Lot Size: | 0.62± Acres |
| APN: | 315-101-64 (<i>Fresno County</i>) |
| Note: | Land Can Be Sold Separately |

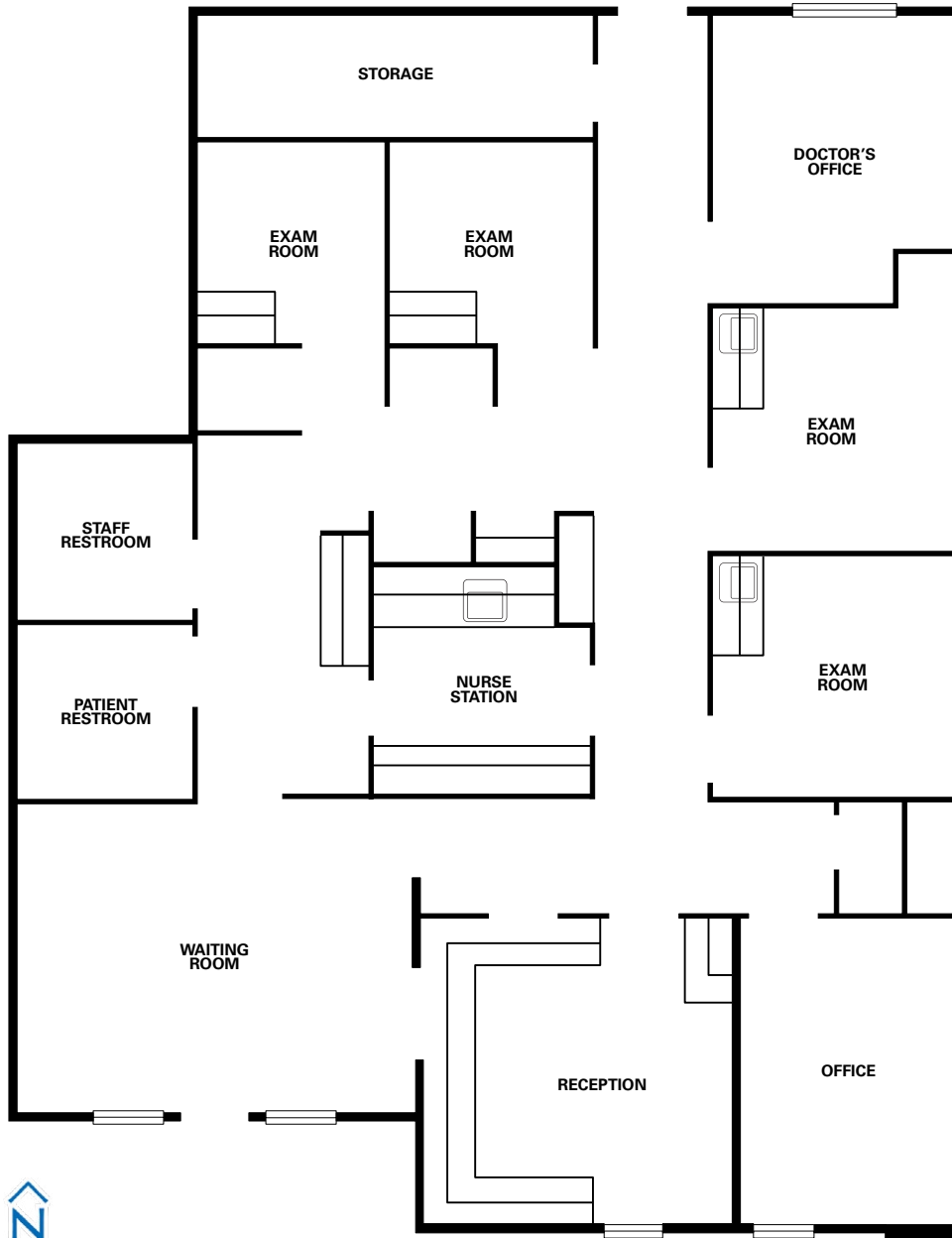
HIGHLIGHTS

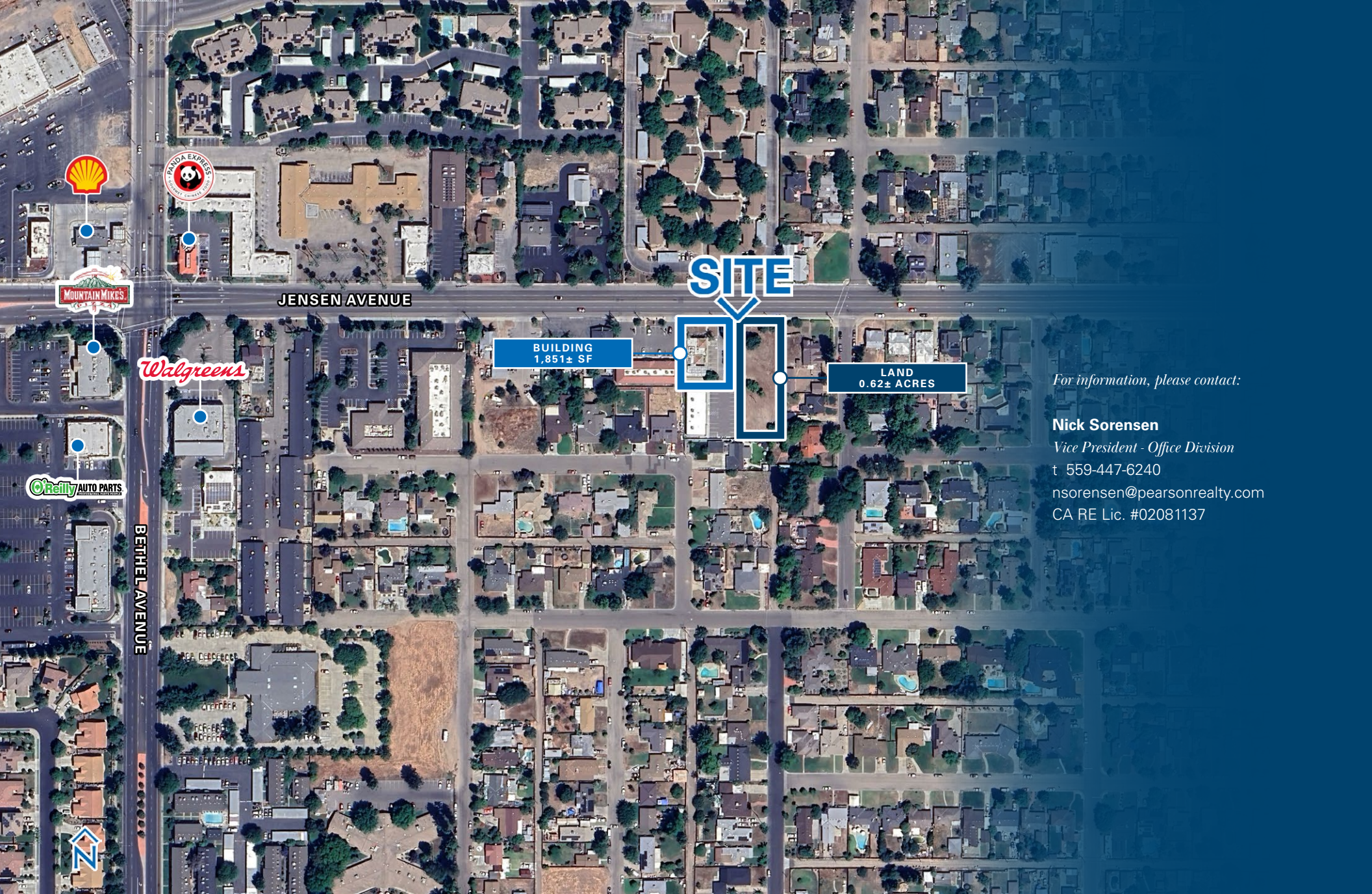
- Rare Medical Space
- Covered Parking
- Recently Remodeled

\$650,000
ASKING PRICE

2317 JENSEN AVENUE
SANGER, CA

FLOOR
PLAN





For information, please contact:

Nick Sorensen

Vice President - Office Division

t 559-447-6240

nsorensen@pearsonrealty.com

CA RE Lic. #02081137

NEWMARK
PEARSON COMMERCIAL

Independently Owned and Operated
Corporate License #00020875
newmarkpearson.com

FRESNO OFFICE
7480 N. Palm Ave. #101
Visalia, CA 93711
t 559-432-6200

VISALIA OFFICE
3447 S. Demaree St.
Visalia, CA 93277
t 559-732-7300

The distributor of this communication is performing acts for which a real estate license is required. The information contained herein has been obtained from sources deemed reliable but has not been verified and no guarantee, warranty or representation, either express or implied, is made with respect to such information. Terms of sale or lease and availability are subject to change or withdrawal without notice.