



SAITO
COMPANY

907

FOR LEASE

Prime Downtown Flex Office & Warehouse Space

**907 Santa Fe Ave,
Fresno, CA 93721**

View more listings at saitocompany.com

Location, demographics and plan information is supplied by sources believed to be reliable. However, the Mark Saito Company cannot guarantee its accuracy and make no warranty or representations as to its veracity. It is presented here with the possibility of errors, omissions, change of price, rental or other conditions, prior sale, lease or financing, or withdrawal without notice. We include projections, opinions, assumptions or estimates for example only and these may not represent current or future performance of the property. All inquiries about content should be directed to the broker (BRE LIC# 00701227) Mark Saito and the Mark Saito Company. All rights reserved.

Patrick Monreal

C 559.284.9028

E patrick@saitocompany.com

Mark Saito

C 559.284.9028

E mark@saitocompany.com

SAITO
COMPANY

**907 Santa Fe Ave,
Fresno, CA 93721**



Prime Downtown Flex **Office & Warehouse Space**

Prime downtown flex office space and warehouse space. The building has 10,995 SF +/- of office space available and 7,592 SF +/- of warehouse space available. Centrally located within Downtown Fresno, 907 Santa Fe Ave is within walking distance to the Federal Courthouse, Fresno Superior Courthouse, Fresno City Hall, Amtrak Station, and multiple Fresno favorite restaurants.

View more listings at [saitocompany.com](https://www.saitocompany.com)

Location, demographics and plan information is supplied by sources believed to be reliable. However, the Mark Saito Company cannot guarantee its accuracy and make no warranty or representations as to its veracity. It is presented here with the possibility of errors, omissions, change of price, rental or other conditions, prior sale, lease or financing, or withdrawal without notice. We include projections, opinions, assumptions or estimates for example only and these may not represent current or future performance of the property. All inquiries about content should be directed to the broker (BRE LIC# 00701227) Mark Saito and the Mark Saito Company. All rights reserved.

Patrick Monreal

C 559.284.9028

E patrick@saitocompany.com

Mark Saito

C 559.284.9028

E mark@saitocompany.com

The image shows a modern building with blue horizontal slat siding and blue vertical support columns. A concrete walkway leads through a landscaped area with trees and shrubs. The Saito Company logo is in the top left corner.

SAITO
COMPANY

**907 Santa Fe Ave,
Fresno, CA 93721**

Property **Highlights**

-
- ✓ Prime Downtown Fresno Location
 - ✓ Excellent Freeway Accessibility
-
- ✓ Newly Remodeled
 - ✓ Secured Parking
-
- ✓ Walking Distance to Restaurants
 - ✓ Walking Distance to Cafes
-

View more listings at [saitocompany.com](https://www.saitocompany.com)

Location, demographics and plan information is supplied by sources believed to be reliable. However, the Mark Saito Company cannot guarantee its accuracy and make no warranty or representations as to its veracity. It is presented here with the possibility of errors, omissions, change of price, rental or other conditions, prior sale, lease or financing, or withdrawal without notice. We include projections, opinions, assumptions or estimates for example only and these may not represent current or future performance of the property. All inquiries about content should be directed to the broker (BRE LIC# 00701227) Mark Saito and the Mark Saito Company. All rights reserved.

Patrick Monreal

C 559.284.9028

E patrick@saitocompany.com

Mark Saito

C 559.284.9028

E mark@saitocompany.com



SAITO
COMPANY



Meet the **Neighbors**

- ✓ Fresno Amtrak Station
- ✓ Fresno City Hall and Security Courthouse
- ✓ Fresno County Public Library
- ✓ California Department of Real Estate

View more listings at saitocompany.com

Location, demographics and plan information is supplied by sources believed to be reliable. However, the Mark Saito Company cannot guarantee its accuracy and make no warranty or representations as to its veracity. It is presented here with the possibility of errors, omissions, change of price, rental or other conditions, prior sale, lease or financing, or withdrawal without notice. We include projections, opinions, assumptions or estimates for example only and these may not represent current or future performance of the property. All inquiries about content should be directed to the broker (BRE LIC# 00701227) Mark Saito and the Mark Saito Company. All rights reserved.

Patrick Monreal

C 559.284.9028

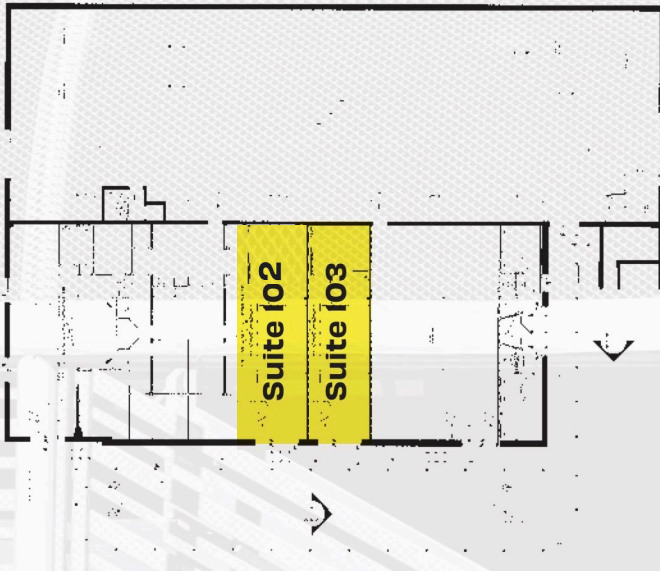
E patrick@saitocompany.com

Mark Saito

C 559.284.9028

E mark@saitocompany.com

Vacant Suites

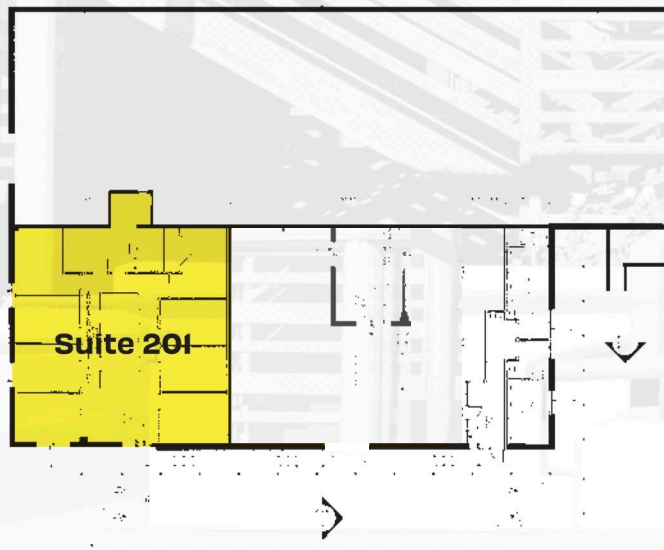


First Floor

Suite 102	2,300± sq. ft.
Suite 103	1,418 sq. ft.
Warehouse	7,592 sq. ft.

Second Floor

Suite 201	2,547 sq. ft.
------------------	---------------



View more listings at saitocompany.com

Location, demographics and plan information is supplied by sources believed to be reliable. However, the Mark Saito Company cannot guarantee its accuracy and make no warranty or representations as to its veracity. It is presented here with the possibility of errors, omissions, change of price, rental or other conditions, prior sale, lease or financing, or withdrawal without notice. We include projections, opinions, assumptions or estimates for example only and these may not represent current or future performance of the property. All inquiries about content should be directed to the broker (BRE LIC# 00701227) Mark Saito and the Mark Saito Company. All rights reserved.

Patrick Monreal

C 559.284.9028

E patrick@saitocompany.com

Mark Saito

C 559.284.9028

E mark@saitocompany.com

SAITO
COMPANY

Property Photos



View more listings at [saitocompany.com](https://www.saitocompany.com)

Location, demographics and plan information is supplied by sources believed to be reliable. However, the Mark Saito Company cannot guarantee its accuracy and make no warranty or representations as to its veracity. It is presented here with the possibility of errors, omissions, change of price, rental or other conditions, prior sale, lease or financing, or withdrawal without notice. We include projections, opinions, assumptions or estimates for example only and these may not represent current or future performance of the property. All inquiries about content should be directed to the broker (BRE LIC# 00701227) Mark Saito and the Mark Saito Company. All rights reserved.

Patrick Monreal

C 559.284.9028

E patrick@saitocompany.com

Mark Saito

C 559.284.9028

E mark@saitocompany.com



View more listings at [saitocompany.com](https://www.saitocompany.com)

Location, demographics and plan information is supplied by sources believed to be reliable. However, the Mark Saito Company cannot guarantee its accuracy and make no warranty or representations as to its veracity. It is presented here with the possibility of errors, omissions, change of price, rental or other conditions, prior sale, lease or financing, or withdrawal without notice. We include projections, opinions, assumptions or estimates for example only and these may not represent current or future performance of the property. All inquiries about content should be directed to the broker (BRE LIC# 00701227) Mark Saito and the Mark Saito Company. All rights reserved.

Patrick Monreal

C 559.284.9028

E patrick@saitocompany.com

Mark Saito

C 559.284.9028

E mark@saitocompany.com