

FOR LEASE RETAIL / OFFICE

Price: \$14 / NNN

14016 Manchester Rd • Manchester, MO 63011



- Three (3) Suites
- Last available vacancy: 1,794 SF
- Suitable for retail/office
- Great access
- Halfway between Highway 141 & I-270
- High traffic artery: 44,085 VPD
- Signage available

Demographics	1 Mile	3 Mile	5 Mile
Population	8,274	63,327	97,711
Households	3,434	25,348	37,760
Median HH Income	\$127,865	\$153,568	\$171,406

Ken Wedberg

Office: 314-446-7540

Cell: 314-374-6670

wedberg@realtyexchangeweb.com

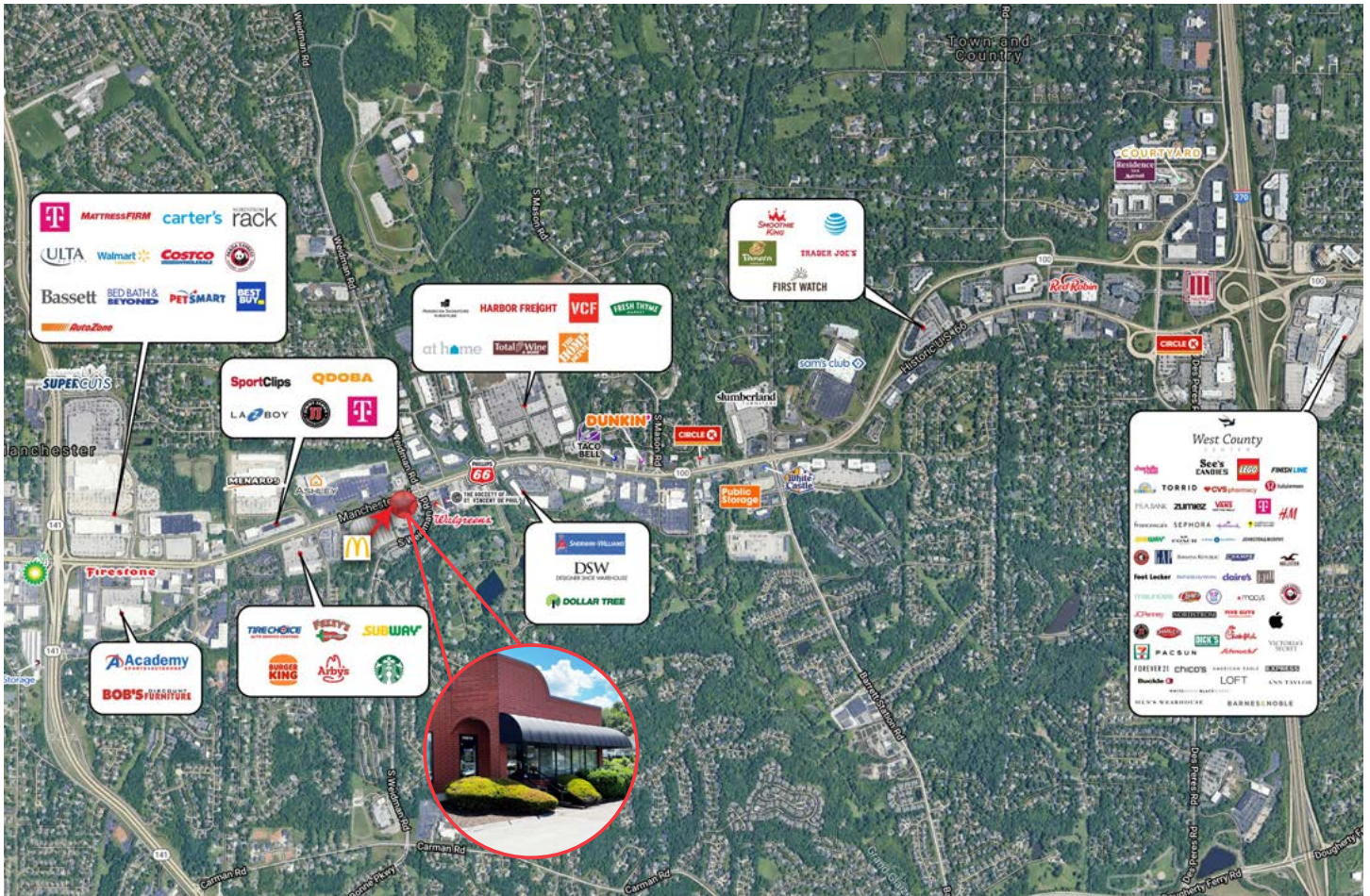
Sam Vandergriff

Office: 314-647-0130 ext. 4055

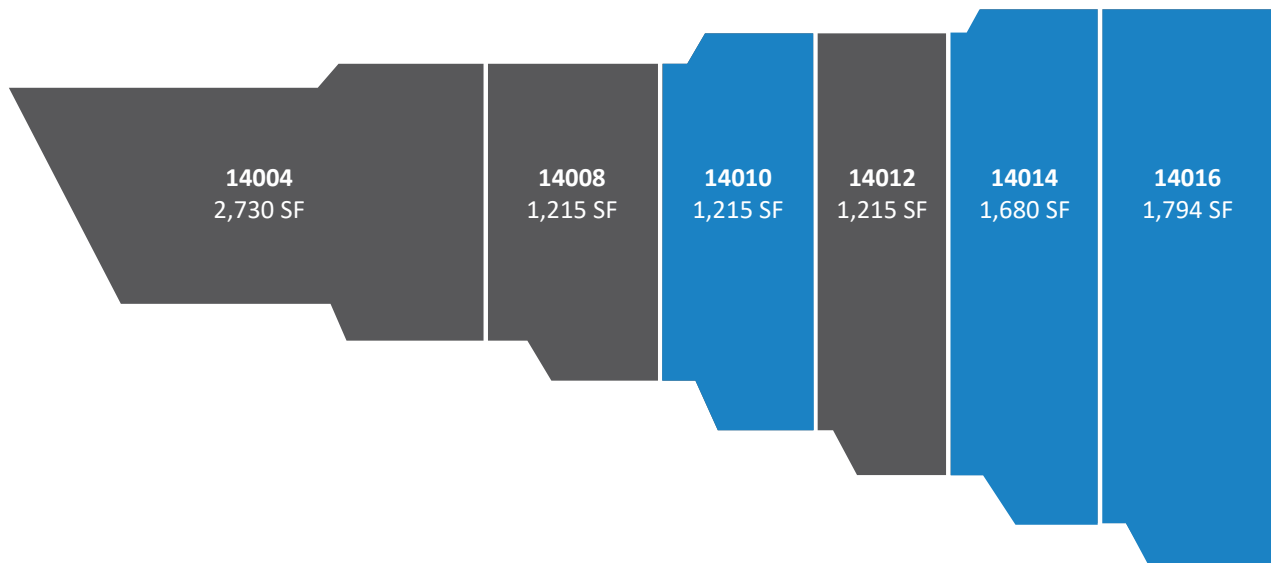
Cell: 314-307-9336

vandergriff@realtyexchangeweb.com

Information contained herein has been obtained from the owner of the property or other sources. The Brokers do not guarantee the accuracy of this information. Sellers and Brokers make no representation as to the environmental or other conditions of the property and recommend that Purchaser(s) investigate fully.

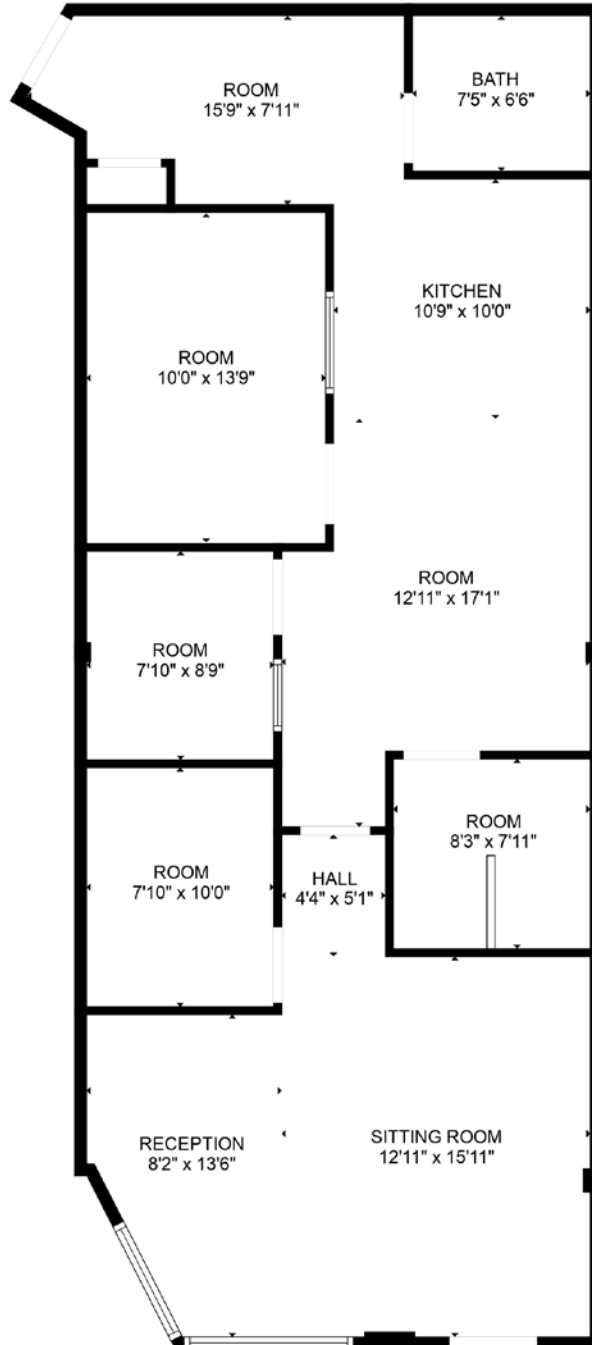


The information contained herein is not warranted, although it has been obtained from the owner of the property or from other sources we deem reliable. It is subject to change without notice. Owner and broker make no representation as to the environmental condition of the property and recommend purchaser's/tenant's independent investigation.



14010 Manchester Rd

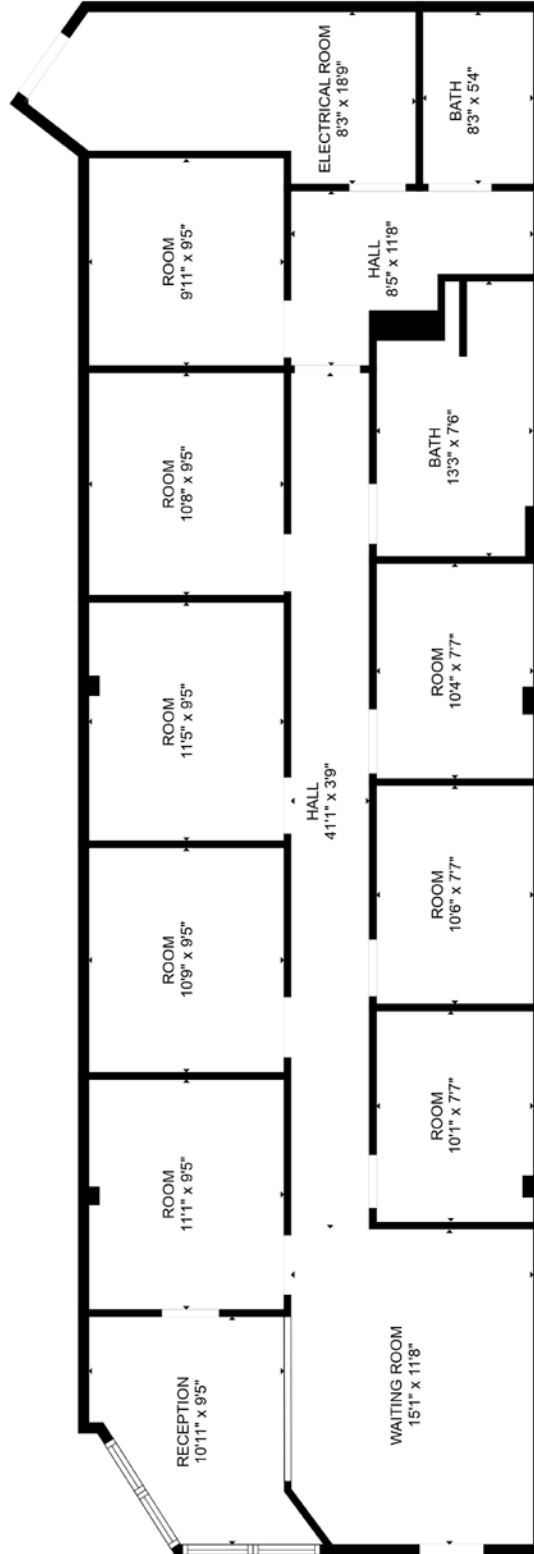
Approximate Dimensions



FLOOR PLAN CREATED BY CUBICASA APP. MEASUREMENTS DEEMED HIGHLY RELIABLE BUT NOT GUARANTEED.

14014 Manchester Rd

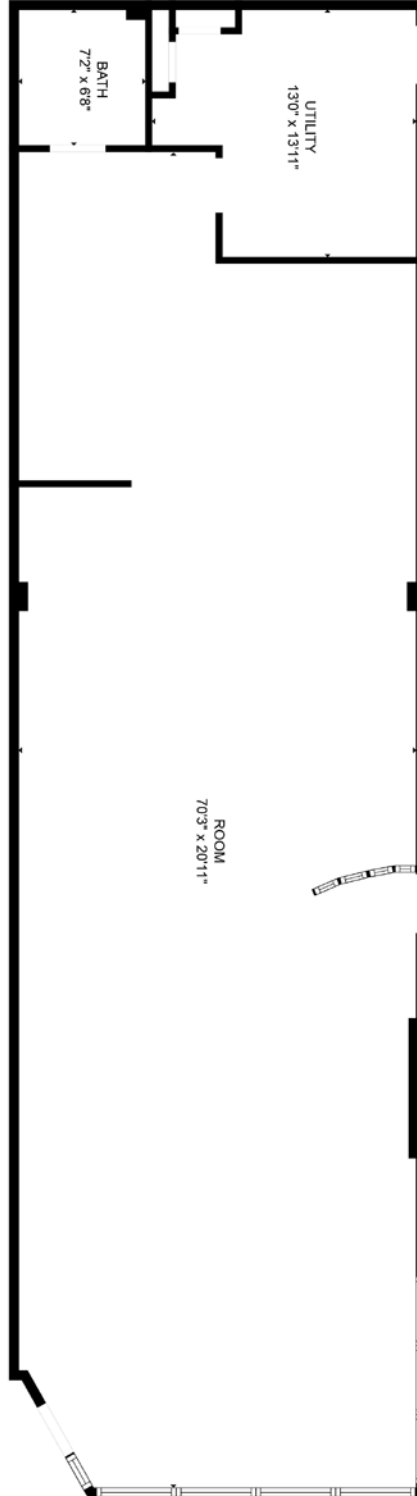
Approximate Dimensions



FLOOR PLAN CREATED BY CUBICASA APP. MEASUREMENTS DEEMED HIGHLY RELIABLE BUT NOT GUARANTEED.

14016 Manchester Rd

Approximate Dimensions



FLOOR PLAN CREATED BY CUBICASA APP. MEASUREMENTS DEEMED HIGHLY RELIABLE BUT NOT GUARANTEED.