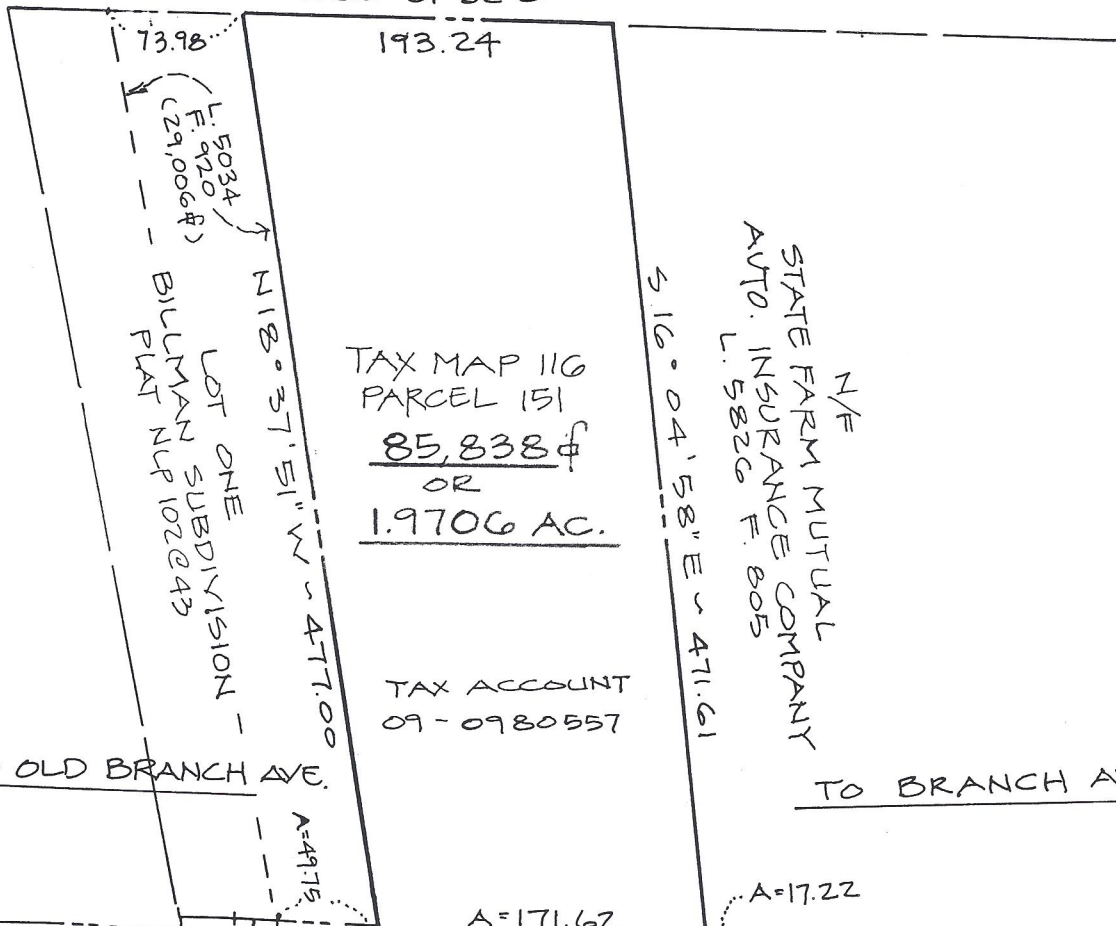


N/F LEONA J. DENNISON, et al  
L. 4698 F. 529

N 80° 51' 32" E



← TO OLD BRANCH AVE.

TO BRANCH AVE. →

WOODYARD ROAD

**MARLBORO ENGINEERING**  
CONSULTANTS, INC.  
Civil Engineers - Land Planners  
P.O. Box 2239  
Upper Marlboro, MD 20773-2239  
Phone 301-249-8022

PLAT OF COMPUTATIONS  
PROPERTY OF  
LEONA J. DENNISON  
LIBER 12622 FOLIO 439  
9th ELECTION DISTRICT  
PRINCE GEORGE'S COUNTY, MD  
MAY, 2002 SCALE 1" = 100'