



Greater Vision Enterprises, Inc.

788 Montgomery Ave Ocoee, FL 34761

407-GREATER (407-473-2837)

Established in 2019

Greater Vision Building

788 MONTGOMRY AVE , OCOEE, FL 34761

Property Highlights

- Walking distance to Orlando Health Hospital
- Minutes to SR 408, SR 429 and the Florida Turnpike
- Located in Ocoee in large Medical Services Area
- Customizable First Floor Plan
- Furnished with new carpets throughout & cubicles in place



FOR MORE INFORMATION | MILLENNIA-PARTNERS.COM

PRESENTED BY

LUKE SAWYER

321.205.6544

lsawyer@millenia-partners.com

MICHAEL ETCHISON

321.287.7481

metchison@millenia-partners.com



EXECUTIVE SUMMARY

788 MONTGOMRY AVE , OCOEE, FL 34761

Greater Vision Building



OFFERING SUMMARY

Lease Rate:	Negotiable
Building Size:	16,012 SF
Available SF:	240SF - 5,201
Number of Units:	1
Year Built:	2011

PROPERTY OVERVIEW

This Class-A office is for lease in this beautiful two story building, located in the heart of Ocoee. The suite has multiple private offices and an open floor concept with furniture optional.

Rent includes water & electric and the majority of the building is owner-occupied.

LOCATION OVERVIEW

Located off W. Colonial Drive in Ocoee, this beautiful office space is ideally located for both your patrons and your employees. The first floor suite is surrounded by medical, retail and residential properties, allowing your company to be within minutes of your future customers.

PRESENTED BY

LUKE SAWYER

321.205.6544

lsawyer@millenia-partners.com

MICHAEL ETCHISON

321.287.7481

metchison@millenia-partners.com

OFFICE

For Lease

LEASE SPACES

788 MONTGOMRY AVE , OCOEE, FL 34761

Greater Vision Building



LEASE INFORMATION

Lease Type:	NNN	Lease Term:	Negotiable
Total Space:	4,721 SF	Lease Rate:	Negotiable

AVAILABLE SPACES

SUITE	TENANT	SIZE (SF)	LEASE TYPE	LEASE RATE	DESCRIPTION
Executive 120SF Office w/Conference and Break Room SUITE 1	-	120 - 240 SF	Modified Gross	\$800 per month	-
Executive 120SF Office w/Conference and Breakroom SUITE 2	-	120 - 240 SF	Modified Gross	\$800 per month	-
First Floor Office Space	Available	4,721 SF	NNN	\$27.00 SF/yr	This premium office space consists of 3,681SF of open floor space in addition to 3 large private offices, a server/conference room, break-room and copy area. With abundant parking, outside lunch area and an option for a receptionist. This first floor office space is customizable to fit your company's desired use.

PRESENTED BY

LUKE SAWYER

321.205.6544

lsawyer@millenia-partners.com

MICHAEL ETCHISON

321.287.7481

metchison@millenia-partners.com

OFFICE BUILDING

For Lease

ADDITIONAL PHOTOS

788 MONTGOMRY AVE , OCOEE, FL 34761

Greater Vision Building



PRESENTED BY

LUKE SAWYER

321.205.6544

lsawyer@millenia-partners.com

MICHAEL ETCHISON

321.287.7481

metchison@millenia-partners.com

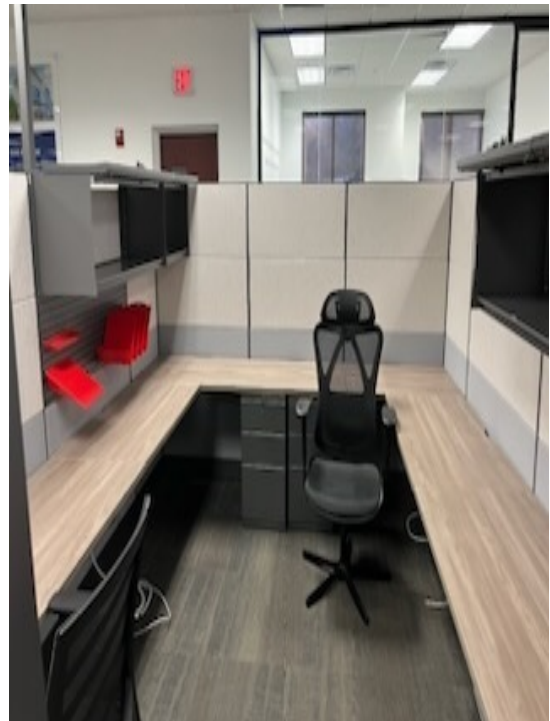
OFFICE BUILDING

For Lease

ADDITIONAL PHOTOS

788 MONTGOMRY AVE , OCOEE, FL 34761

Greater Vision Building



PRESENTED BY

LUKE SAWYER

321.205.6544

lsawyer@millenia-partners.com

MICHAEL ETCHISON

321.287.7481

metchison@millenia-partners.com

OFFICE BUILDING

For Lease

ADDITIONAL PHOTOS

788 MONTGOMRY AVE , OCOEE, FL 34761

Greater Vision Building



PRESENTED BY

LUKE SAWYER

321.205.6544

lsawyer@millenia-partners.com

MICHAEL ETCHISON

321.287.7481

metchison@millenia-partners.com

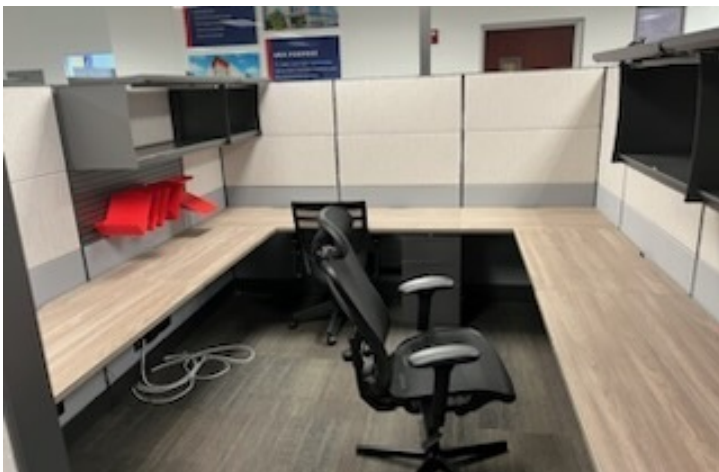
OFFICE BUILDING

For Lease

ADDITIONAL PHOTOS

788 MONTGOMRY AVE , OCOEE, FL 34761

Greater Vision Building



PRESENTED BY

LUKE SAWYER

321.205.6544

lsawyer@millenia-partners.com

MICHAEL ETCHISON

321.287.7481

metchison@millenia-partners.com

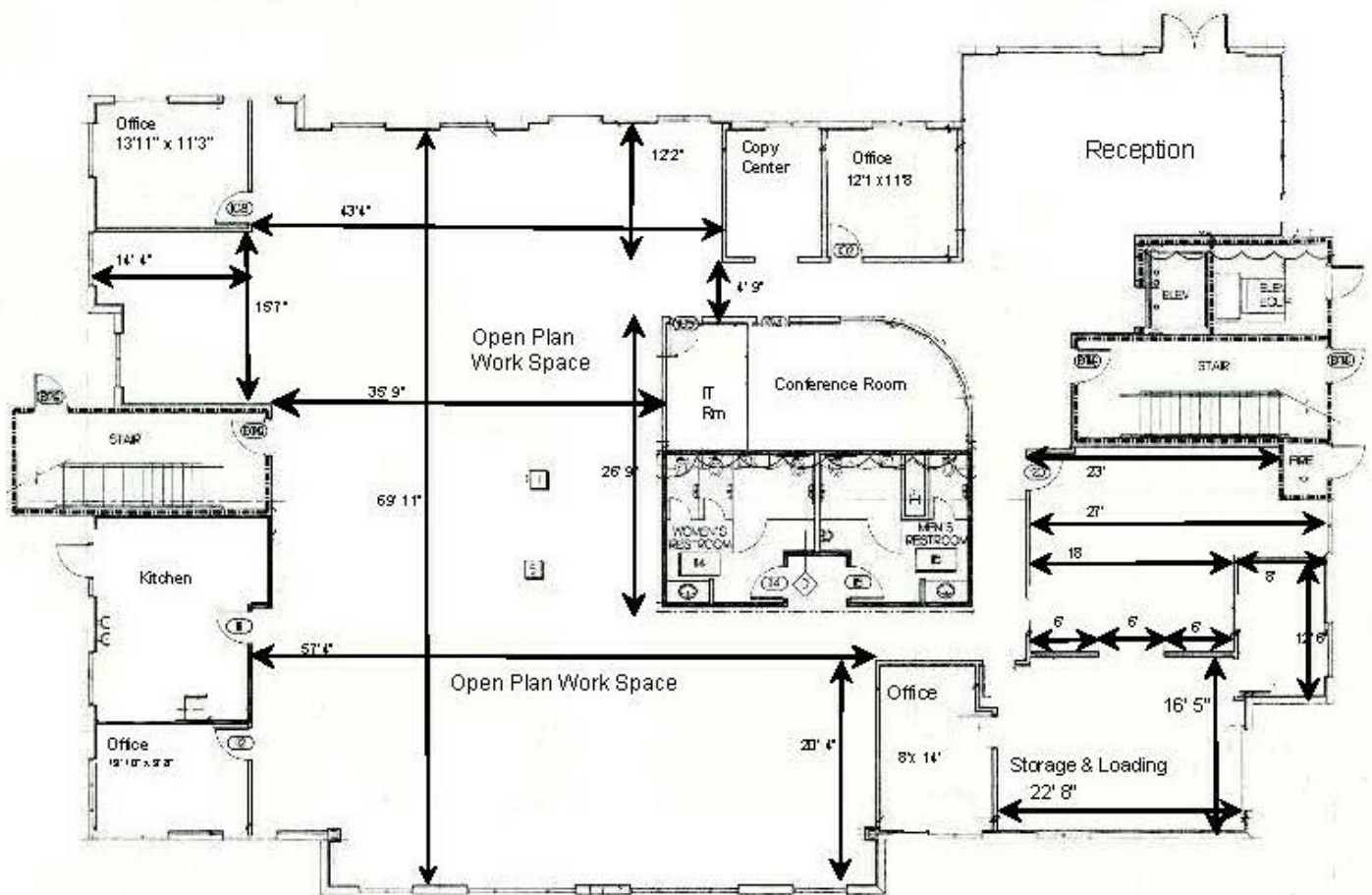
OFFICE BUILDING

For Lease

FLOOR PLANS

788 MONTGOMRY AVE , OCOEE, FL 34761

Greater Vision Building



PRESENTED BY

LUKE SAWYER

321.205.6544

lsawyer@millenia-partners.com

MICHAEL ETCHISON

321.287.7481

metchison@millenia-partners.com

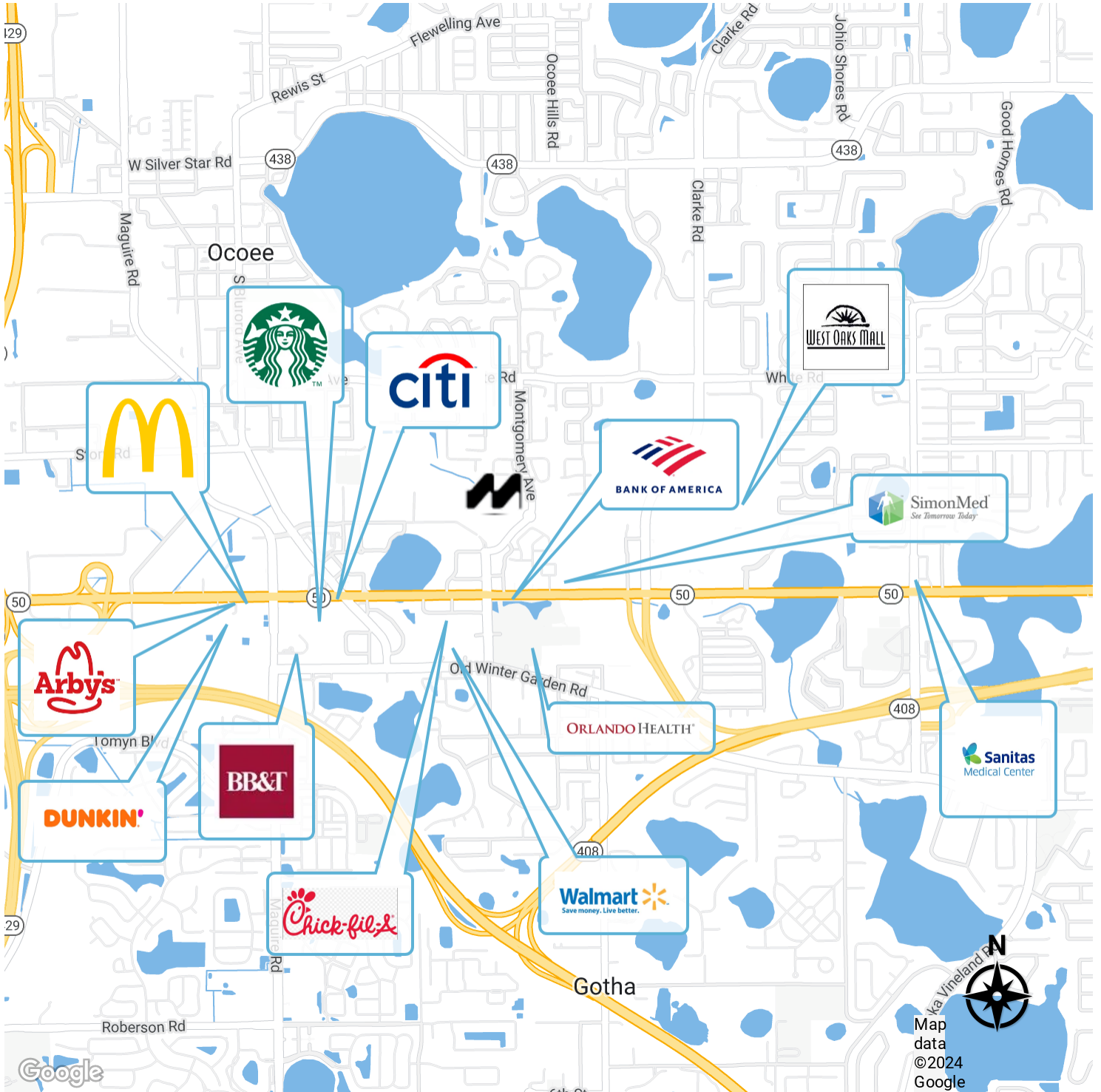
OFFICE BUILDING

For Lease

RETAILER MAP

788 MONTGOMRY AVE , OCOEE, FL 34761

Greater Vision Building



PRESENTED BY
LUKE SAWYER
 321.205.6544
 lsawyer@millenia-partners.com

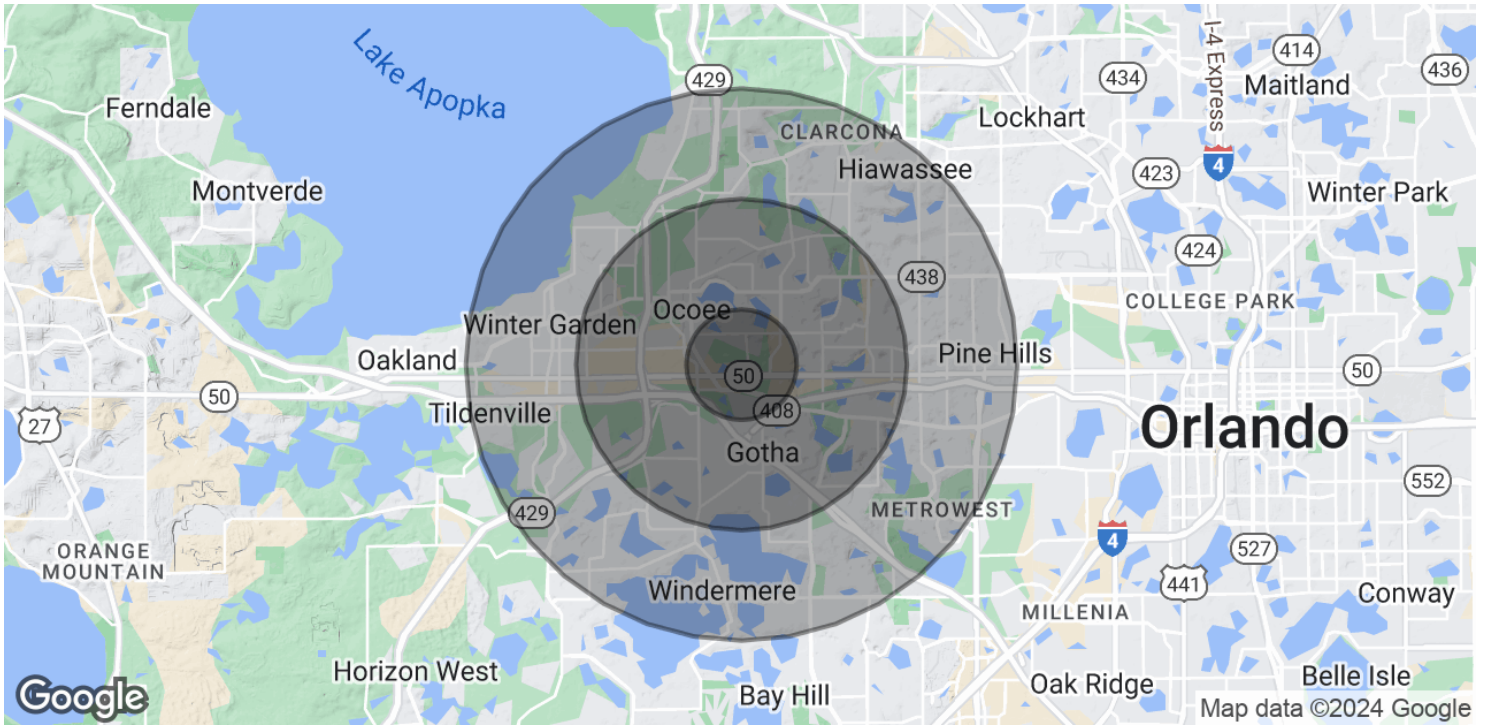
MICHAEL ETCHISON
 321.287.7481
 metchison@millenia-partners.com

OFFICE BUILDING
For Lease

DEMOGRAPHICS MAP & REPORT

788 MONTGOMRY AVE , OCOEE, FL 34761

Greater Vision Building



POPULATION

	1 MILE	3 MILES	5 MILES
Total Population	6,355	81,827	229,325
Average age	39.3	37.1	36.5
Average age (Male)	39.6	36.8	35.6
Average age (Female)	39.2	36.7	36.6

HOUSEHOLDS & INCOME

	1 MILE	3 MILES	5 MILES
Total households	2,315	27,336	79,504
# of persons per HH	2.7	3.0	2.9
Average HH income	\$75,229	\$80,480	\$77,379
Average house value	\$251,365	\$266,630	\$249,060

* Demographic data derived from 2020 ACS - US Census

PRESENTED BY

LUKE SAWYER

321.205.6544

lsawyer@millenia-partners.com

MICHAEL ETCHISON

321.287.7481

metchison@millenia-partners.com

OFFICE BUILDING

For Lease