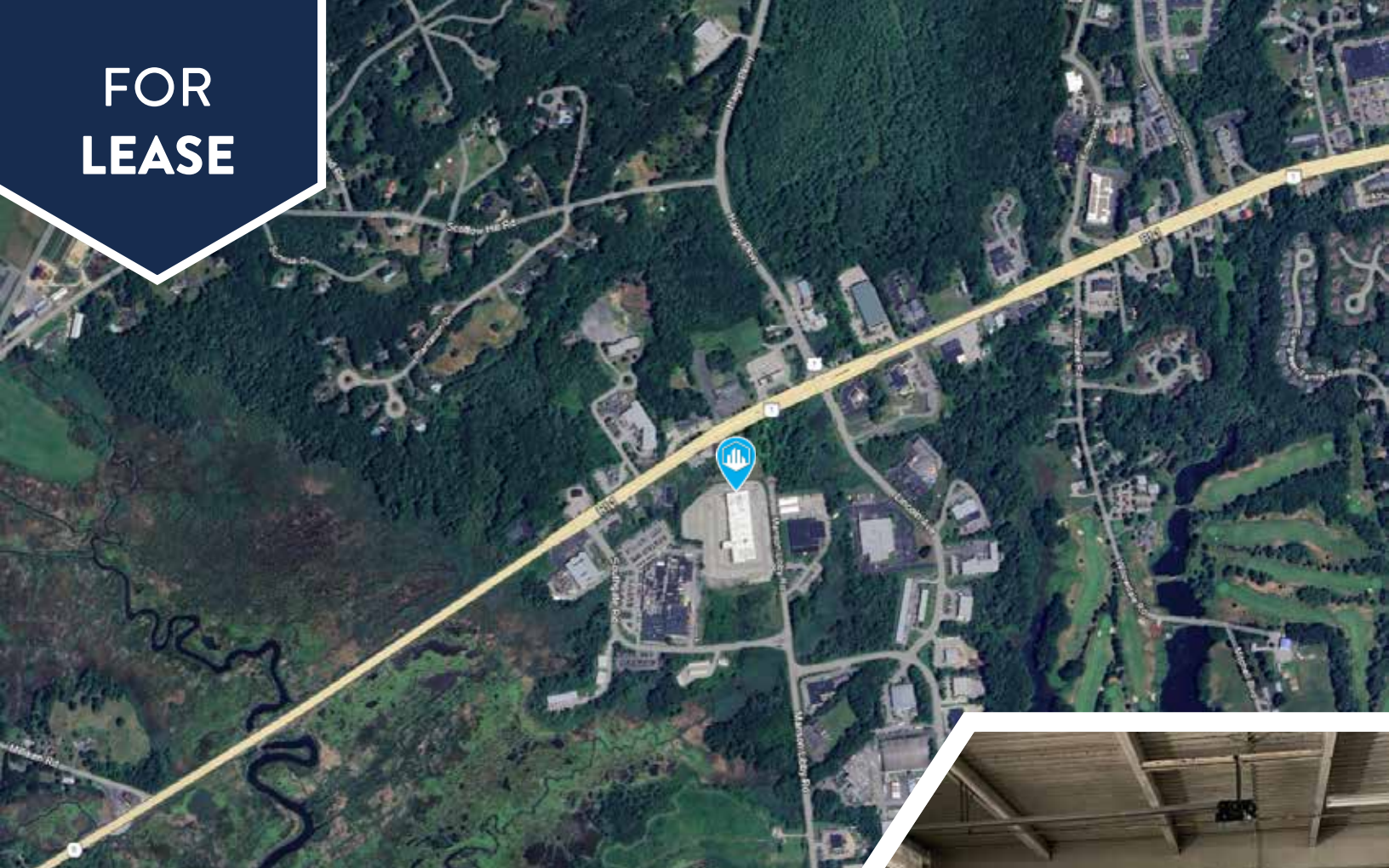


**FOR
LEASE**



7 MANSON LIBBY ROAD

SCARBOROUGH, ME 04074

PROPERTY HIGHLIGHTS

- 68,818±SF warehouse with 50 doors on 15.45± acre site within Scarborough Industrial Park.
- Approximately 2 miles from Exit 42 on I-95 – important to note that this is before the I-95 and I-295 split going Northbound which allows for more efficient access to Central Maine (I-95) and mid-coast Maine (I-295).
- Significant paved yard space for trailer parking (160 spaces) and/or industrial outdoor storage.
- Existing truck terminal facility in the low supply Southern Maine market.

LEASE RATE

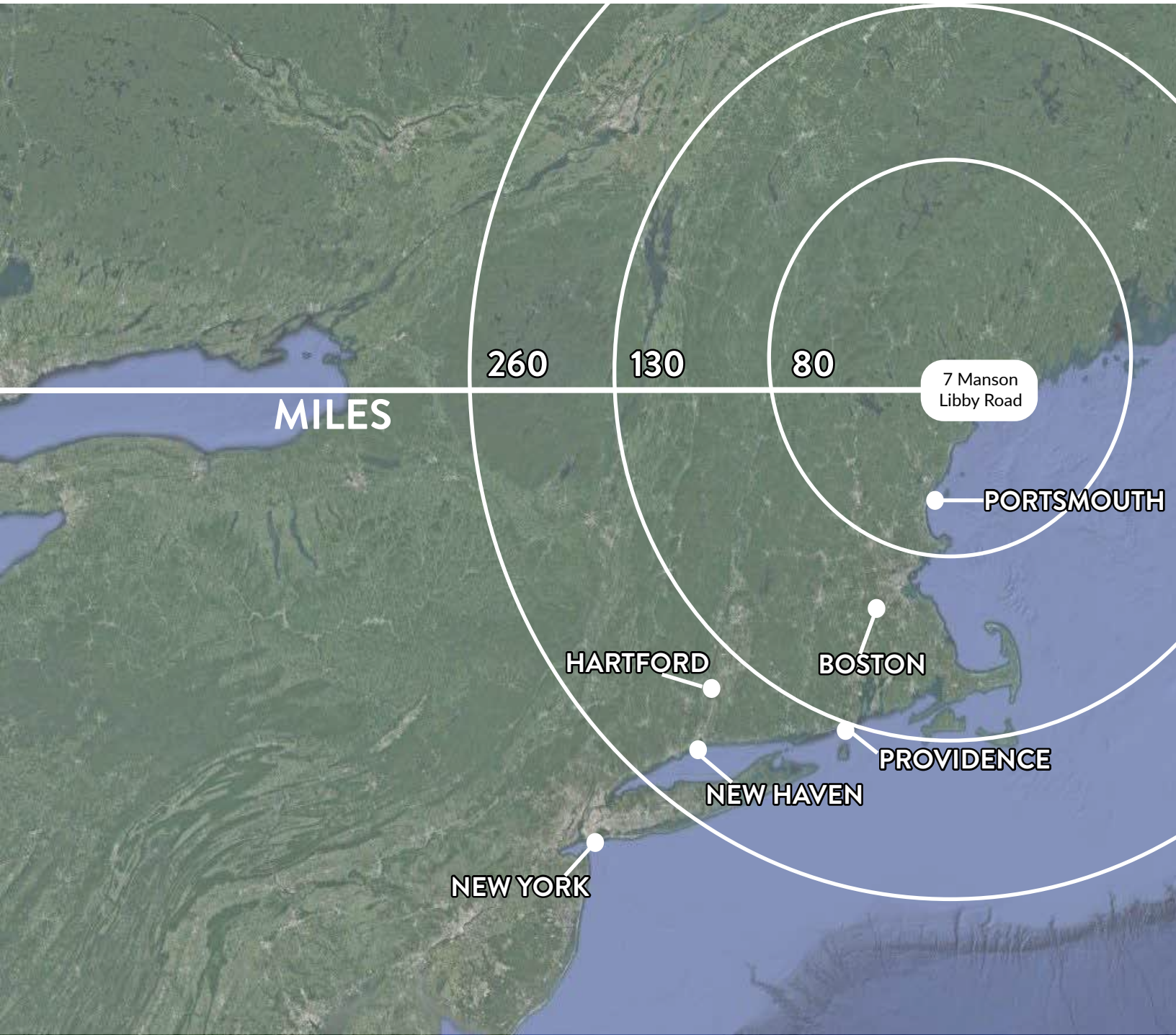
\$975 per door per month



PROPERTY HIGHLIGHTS

OWNER	Fair Terminal Corp
BOOK/PAGE	11533/107
ASSESSOR'S REFERENCE	Map U037, Lot 001
TOTAL LAND AREA	15.45± Acres
TOTAL BUILDING AREA	68,818± SF <ul style="list-style-type: none">• 64,006± SF - First floor• 2,406± SF - Upper story, finished• 2,406± SF - Basement, semi-finished
AVAILABLE SPACE	68,818± SF
ZONING	I (Industrial) B-3 (Business District)
CEILING HEIGHT	18'
ELECTRICAL	480V 3-Phase 1,200 amps
HEATING	Oil (office space only)
WATER/SEWER	Municipal
SPRINKLERS	Dry System
DOCKS/DOORS	50 total doors; 13 doors at grade that back into covered dock-height positions within the building
PARKING	160 Trailer Parking Spaces
2024/2025 RE TAXES	\$39,341.44
LEASE RATE	\$975 per door, per month

FOR LEASE | 7 MANSON LIBBY ROAD
SCARBOROUGH, ME 04074

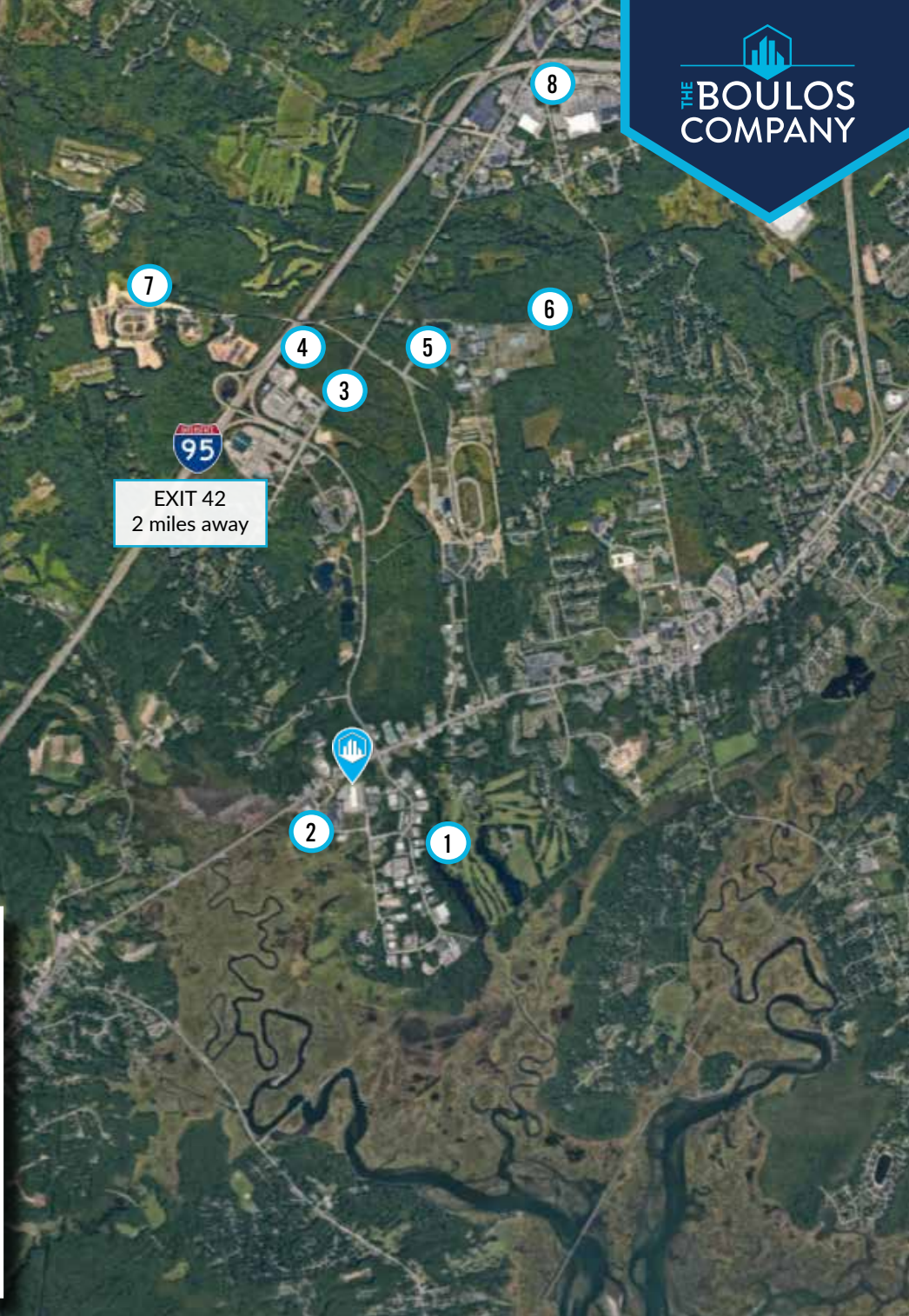


DRIVE TIMES

LEWISTON/AUBURN - 45 MINS
AUGUSTA - 1 HOUR
BANGOR - 2 HOURS

PORTSMOUTH, NH - 1 HOUR
BOSTON, MA - 2 HOURS
NEW YORK, NY - 6 HOURS

- 1 
- 2 
- 3 
- 4 
- 5 
- 6 
- 7 
- 8 



EXIT 42
2 miles away



7 Manson Libby Road
Scarborough, ME 04074

CONTACT US



JON RIZZO, SIOR
Partner
+1 207.553.1712 D
+1 207.233.3304 C
jrizzo@boulos.com



GREGORY W. BOULOS
Managing Partner
+1 207.553.1715 D
+1 207.831.3000 C
gboulos@boulos.com

©2025 The Boulos Company, Inc. All rights reserved. This information has been obtained from sources believed reliable but has not been verified for accuracy or completeness. You should conduct a careful, independent investigation of the property and verify all information. Any reliance on this information is solely at your own risk. The Boulos Company and The Boulos Company logo are service marks of The Boulos Company, Inc. All other marks displayed on this document are the property of their respective owners. Photos herein are the property of their respective owners. Use of these images without the express written consent of the owner is prohibited.