

# BROOK HOLLOW DISTRIBUTION CENTER

NORTHEAST ATLANTA  
**NORCROSS**

5785 Brook Hollow Parkway | Suites A – B  
Norcross, GA 30071



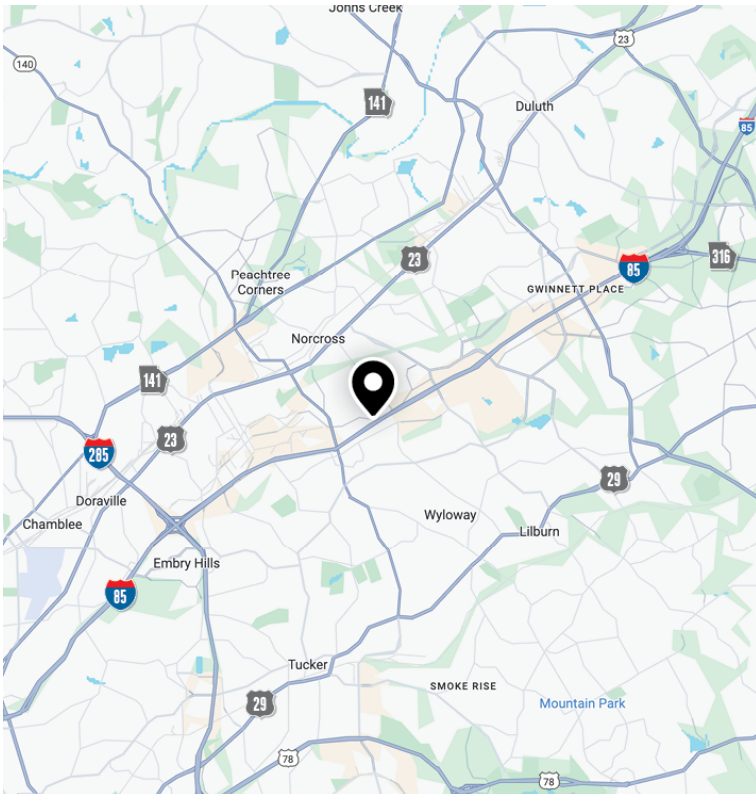
FOR LEASE

SUITES A – B

29,079 – 87,600 SF

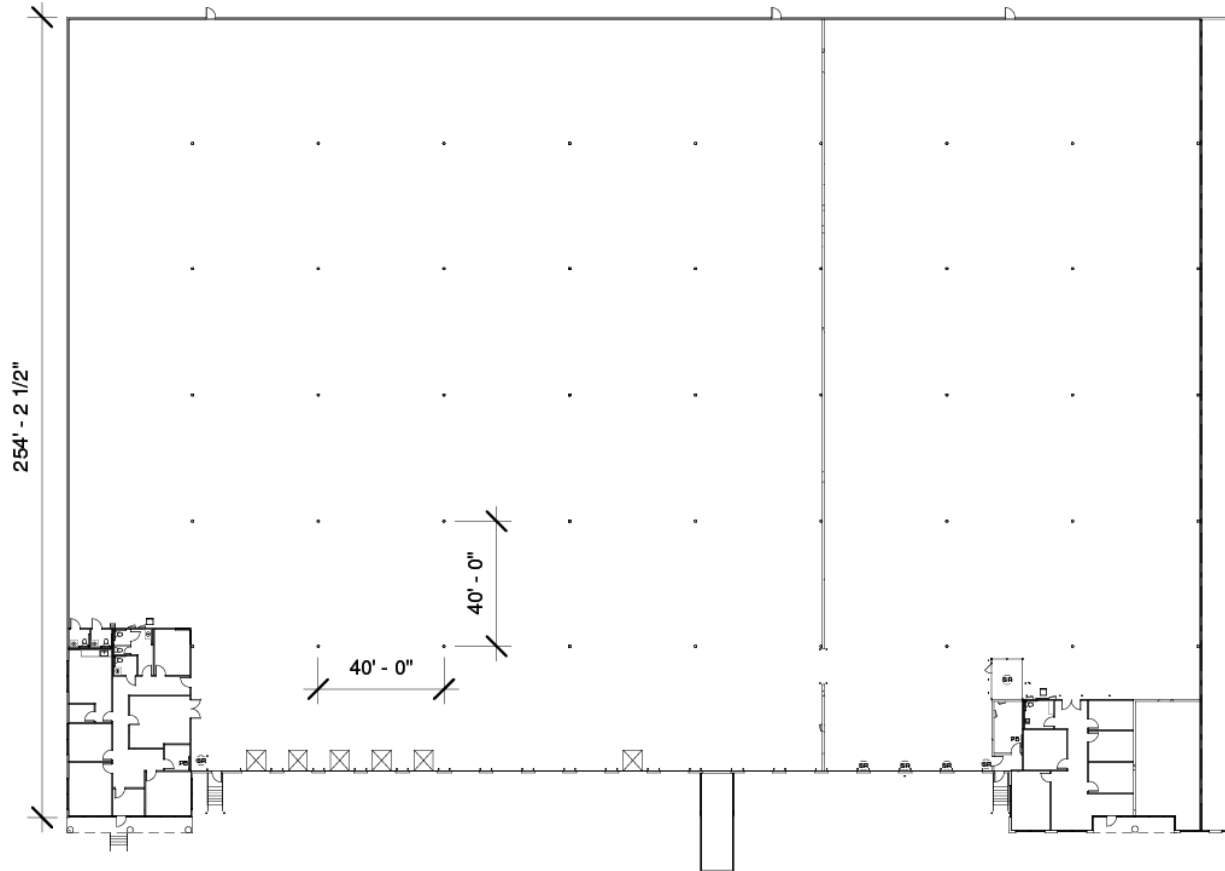


LEASED BY **NAI**BrannenGoddard



## SPECIFICATIONS

Building Size	159,400 SF
Available	29,079 – 87,600 SF
Office	Up to 4,386 SF
Clear Height	24'
Dock-High Doors	17
Drive-In Door	1
Column Spacing	40' x 40'
Parking	1.88/1,000 SF
Sprinkler	Wet
Power	400 Amps, 480/277 Volts
Location	End Cap

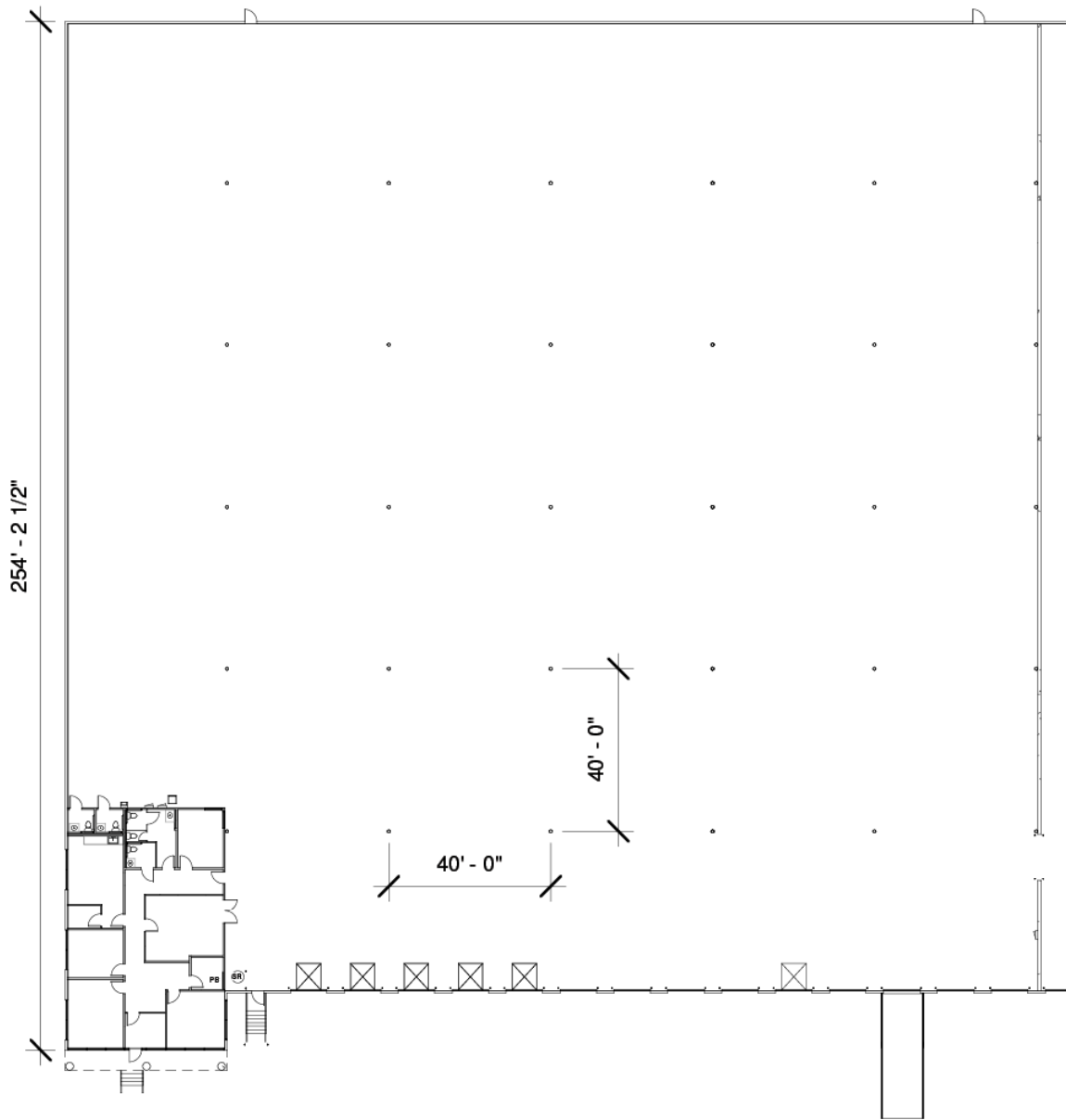


### SUITE A

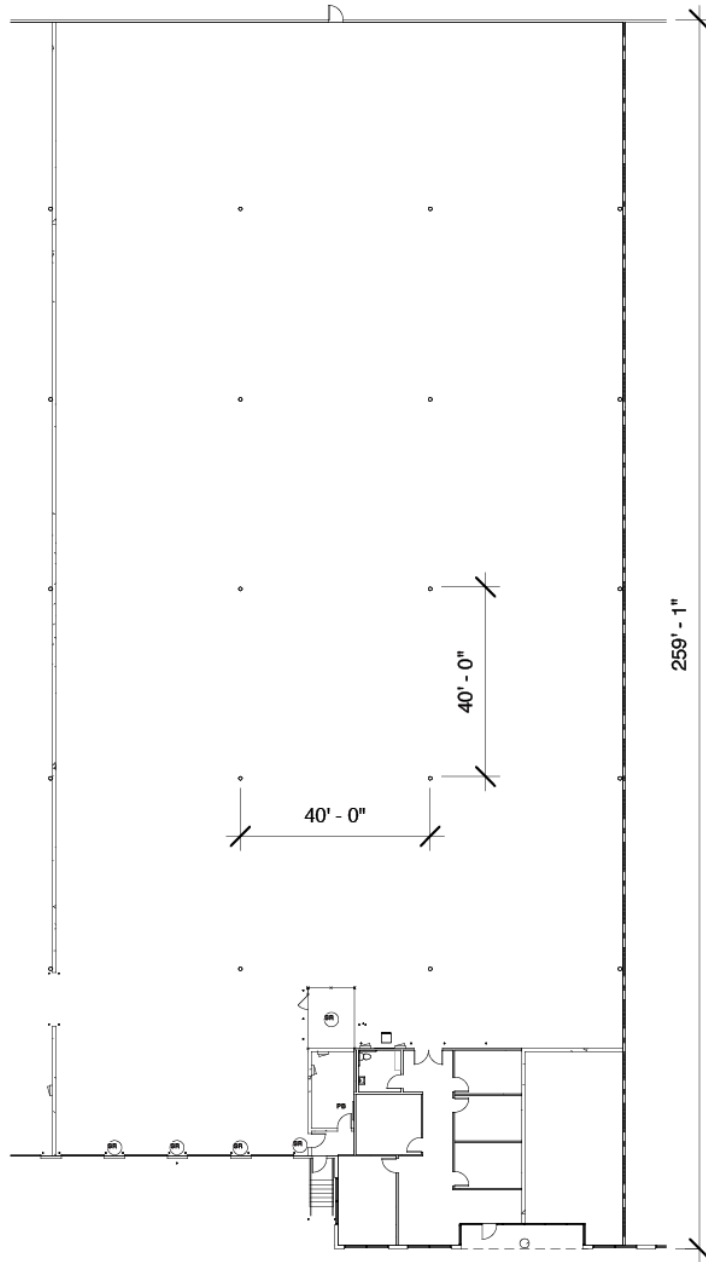
OFFICE SF	2,571
WAREHOUSE SF	55,950
<b>TOTAL SF</b>	<b>58,521</b>

### SUITE B

OFFICE SF	1,815
WAREHOUSE SF	27,264
<b>TOTAL SF</b>	<b>29,079</b>



SUITE A	
OFFICE SF	2,571
WAREHOUSE SF	55,950
<b>TOTAL SF</b>	<b>58,521</b>



SUITE B	
OFFICE SF	1,815
WAREHOUSE SF	27,264
<b>TOTAL SF</b>	<b>29,079</b>

# CONTACT INFORMATION



5785 Brook Hollow Pkwy | Suites A – B  
Norcross, GA 30071

**Walker Adams**

wadams@naibg.com  
(404) 812-4066

**Nathan Anderson**

nanderson@naibg.com  
(404) 812-4020

**Charlie Adams**

cadams@naibg.com  
(404) 812-4037

This document is for informational purposes only and does not constitute an offer or acceptance of a lease. Any lease agreement must be in writing and signed by the landlord. No representations or warranties are made except as expressly stated in a signed lease. Information is provided "as is" and may be subject to errors or change without notice.

