



Retail

For Lease

Daniel Myers
(281) 339-9888

dmyers@apexrealtors.com

www.apexrealtors.com

[Contact us for more information](#)

**2240 FM 1092, Missouri
City Texas 77459**

1,000 SF Dental Office



PROPERTY HIGHLIGHTS

1,000 SF Center space last space available

2nd generation dentist space. Three dental suites. Rare opportunity to lease a boutique dental office.

Prime location on FM 1092.
Highly visible in this rapidly growing area.
Ample parking.
Great signage opportunity.

Insert text here

DEMOGRAPHICS

3 MILE

1 MILE

110,188

11,571

Population

37,225

3,893

Households

40.10

40.90

Median Age

\$93,998

\$84,125

Median HH Income

31,180

2,296

Daytime Employees

↑ 5.65%

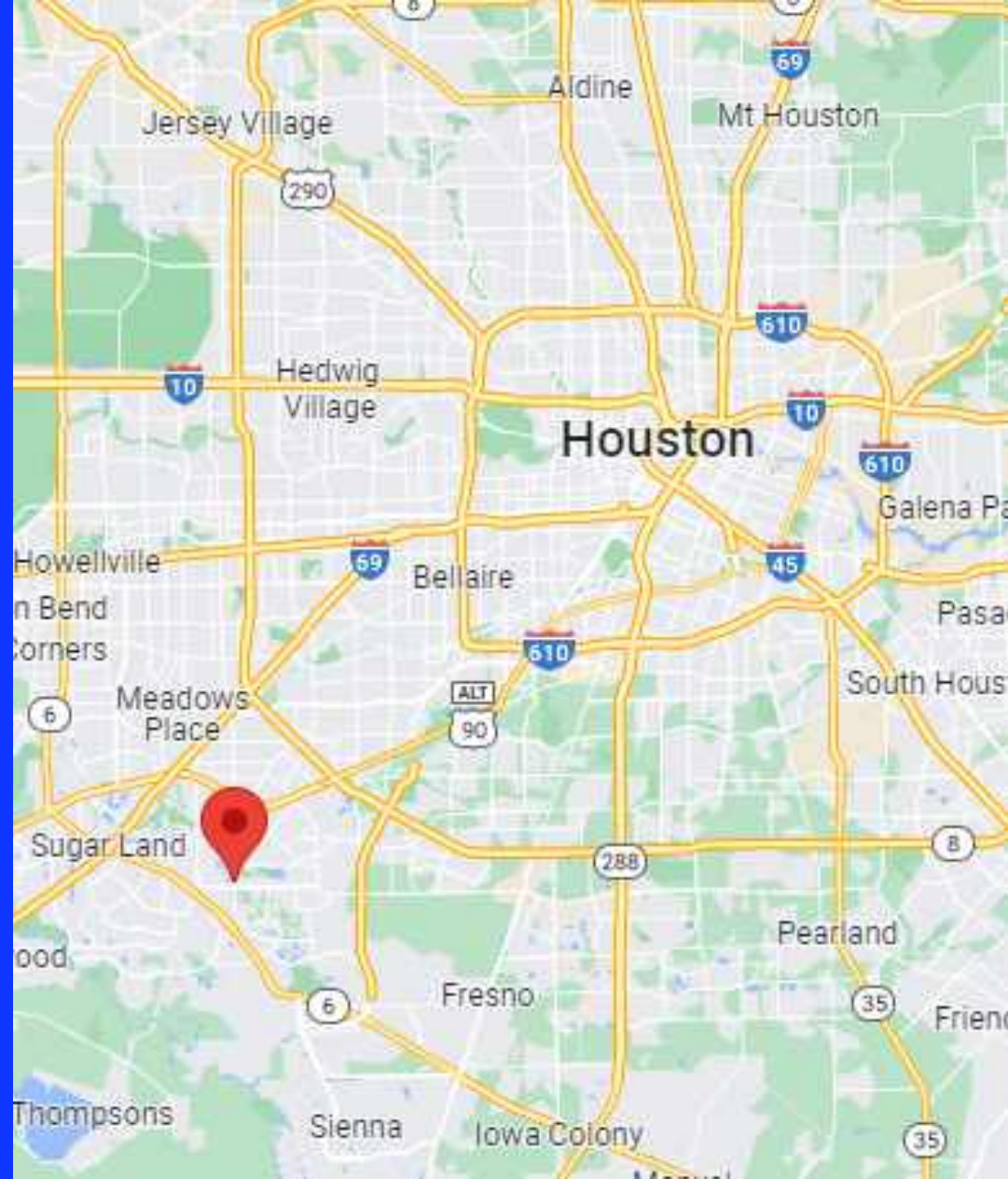
↑ 4.82%

Population Growth '23-'28

↑ 5.74%

↑ 4.91%

Household Growth '23-'28

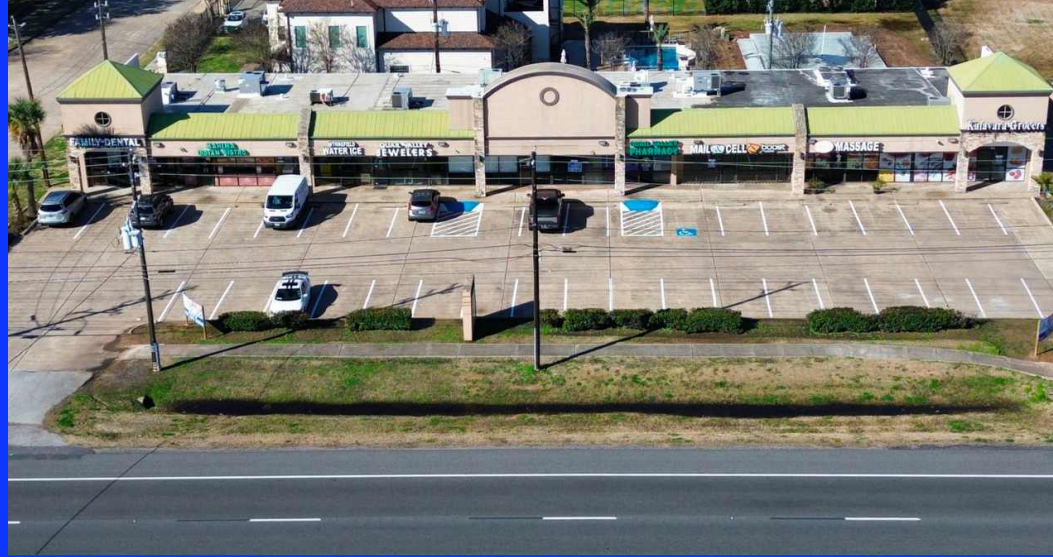




TRAFFIC

Collection Street	Cross Street	Traffic Vol	Last Measured	Distance
FM 1092 Rd	Waterford Village Blvd S	56,097	2022	0.06 mi
FM 1092 Rd	5th St N	26,199	2022	0.19 mi
FM 1092 Rd	Cartwright Rd S	39,239	2022	0.22 mi
5th Street	Rothwell St NE	10,954	2022	0.26 mi
Murphy Road	Cartwright Rd S	40,181	2020	0.27 mi
5th St	Rothwell St NE	5,717	2022	0.28 mi
Cartwright Rd	W Baron Ln E	22,313	2022	0.33 mi
Cartwright Road	W Baron Ln E	25,612	2022	0.34 mi
Cartwright Rd	Waterford PkSt W	13,399	2022	0.38 mi
FM 1092 Rd	Cartwright Rd N	27,518	2022	0.40 mi

PROPERTY OVERVIEW



Murphy Rd



Cartwright Rd



FM 1092 Rd





Retail

For Lease

Daniel Myers

(281) 339-9888

dmyers@apexrealtors.com

www.apexrealtors.com

[Contact us for more information](#)

**2240 FM 1092, Missouri
City Texas 77459**