

FOR LEASE > RETAIL SPACE

525 Wakarusa Drive, Suite D

LAWRENCE, KANSAS



Property Description

This property is just north of the signaled intersection of W 6th Street and Wakarusa Drive just east of Walmart near Free State High School and Sports Pavilion Lawrence, a growing residential area. The space is a second generation restaurant with bar, kitchen, private room and open dining with bonus outdoor dining option. Personal property and kitchen equipment available by separate negotiations. The site includes excellent parking and prominent signage opportunities.

Property Highlights

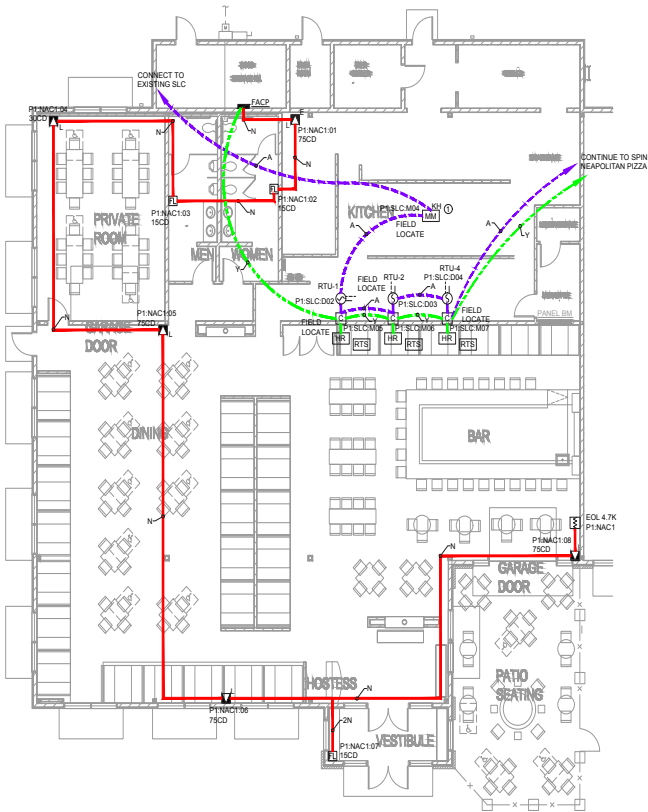
- > Building size: 12,700± SF
- > Available space: 6,573 SF
- > Lease rate: \$12,050.50 monthly, NNN (est, \$15.42/SF)
- > Total monthly rate: \$20,496.80
- > Zoning: CC600-PD
- > Professional company cleaned/polished entire suite March 2021



ALLISON VANCE MOORE
+1 785 865 3924
LAWRENCE, KS
allison.moore@colliers.com

COLLIERS INTERNATIONAL
3705 Clinton Parkway, Suite 201
Lawrence, KS 66047
www.colliers.com

525 Wakarusa Drive > Floor Plan and Aerial



525 Wakarusa Drive > Floor Plan Options

