

NAPERVILLE OFFICE COURT



FOR LEASE

1801 - 1813 N MILL ST | NAPERVILLE

SUMMARY

Single story office space for lease located in a mature business park setting. The property offers turn key build outs for small to midsize users at an attractive rate. It's central location allows for great access to I-88 along with numerous dining and lodging options in the vicinity. The complex also has a conference facility on site for all tenants to use on a first come first serve basis.



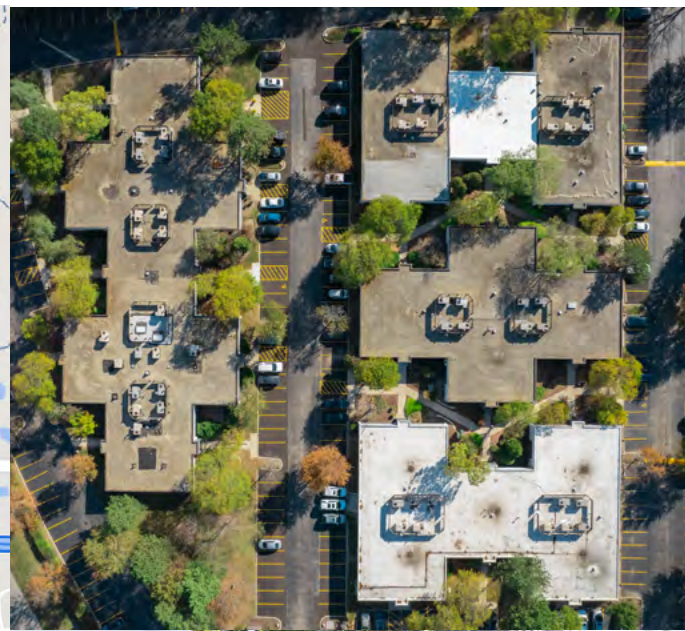
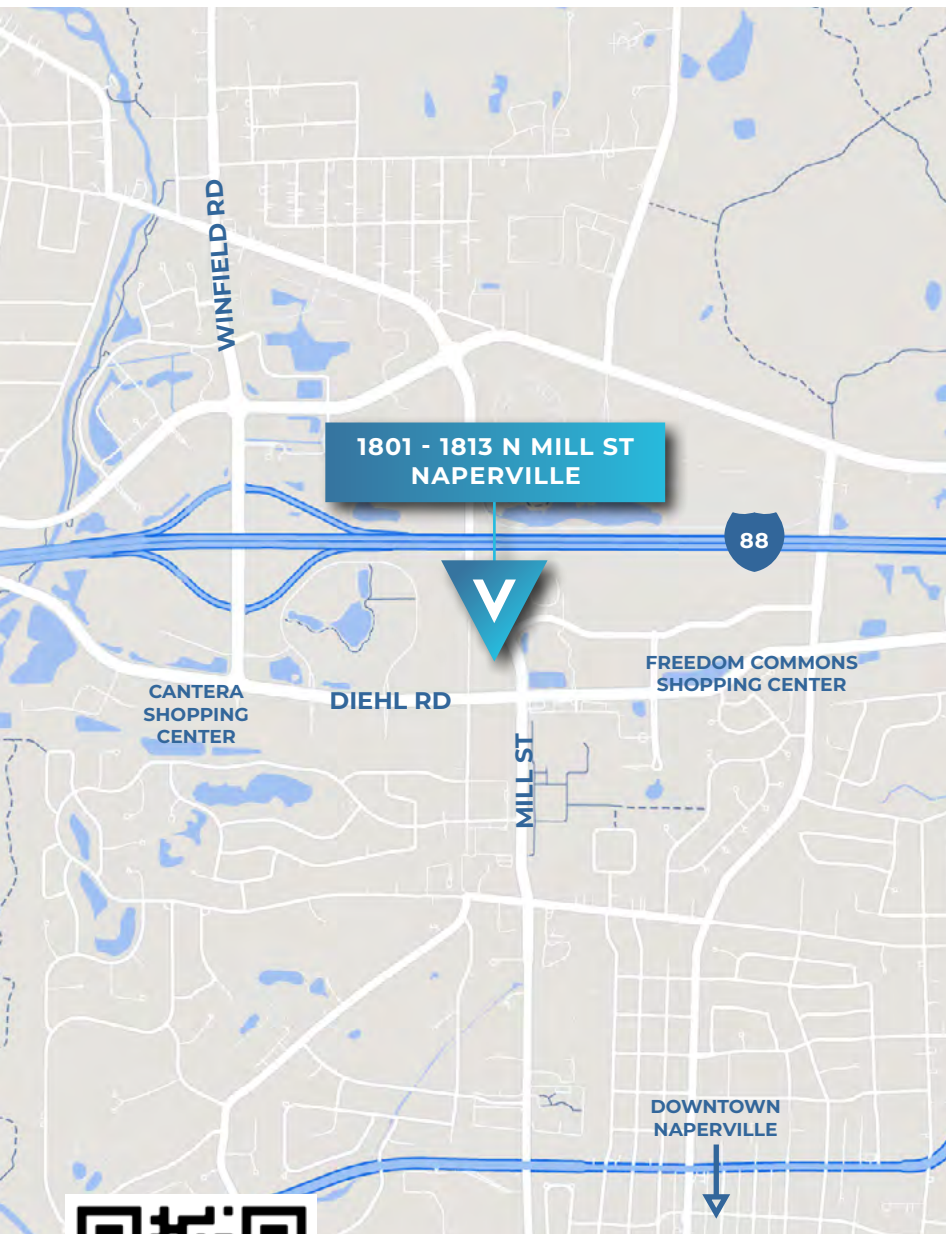
PROPERTY HIGHLIGHTS

- » Asking Rate: Starting at \$20.00 PSF MG
- » Available Space: 611 - 1,400 SF
- » Exposed Ceiling Build Outs Available
- » Modern Interior Finishes
- » Direct Entry into Suite
- » Tenant Controlled HVAC

AREA AMENITIES

- » Close Proximity to the I-88 / Winfield Rd Exit
- » Large Employment Base in Naperville / Aurora and Surrounding Communities
- » Minutes to Downtown Naperville Metra
- » Numerous Fast Serve and Sit Down Dining Options in the Area

TRANSPARENCY
ADAPTABILITY
EXPERTISE



RYAN MOEN, SIOR
PRINCIPAL
DESIGNATED MANAGING BROKER
630.480.6346
RMoen@VersaRES.com

JOHN MILLNER, CCIM
PRINCIPAL
630.480.6342
JMillner@VersaRES.com

VERSA
REAL ESTATE SERVICES