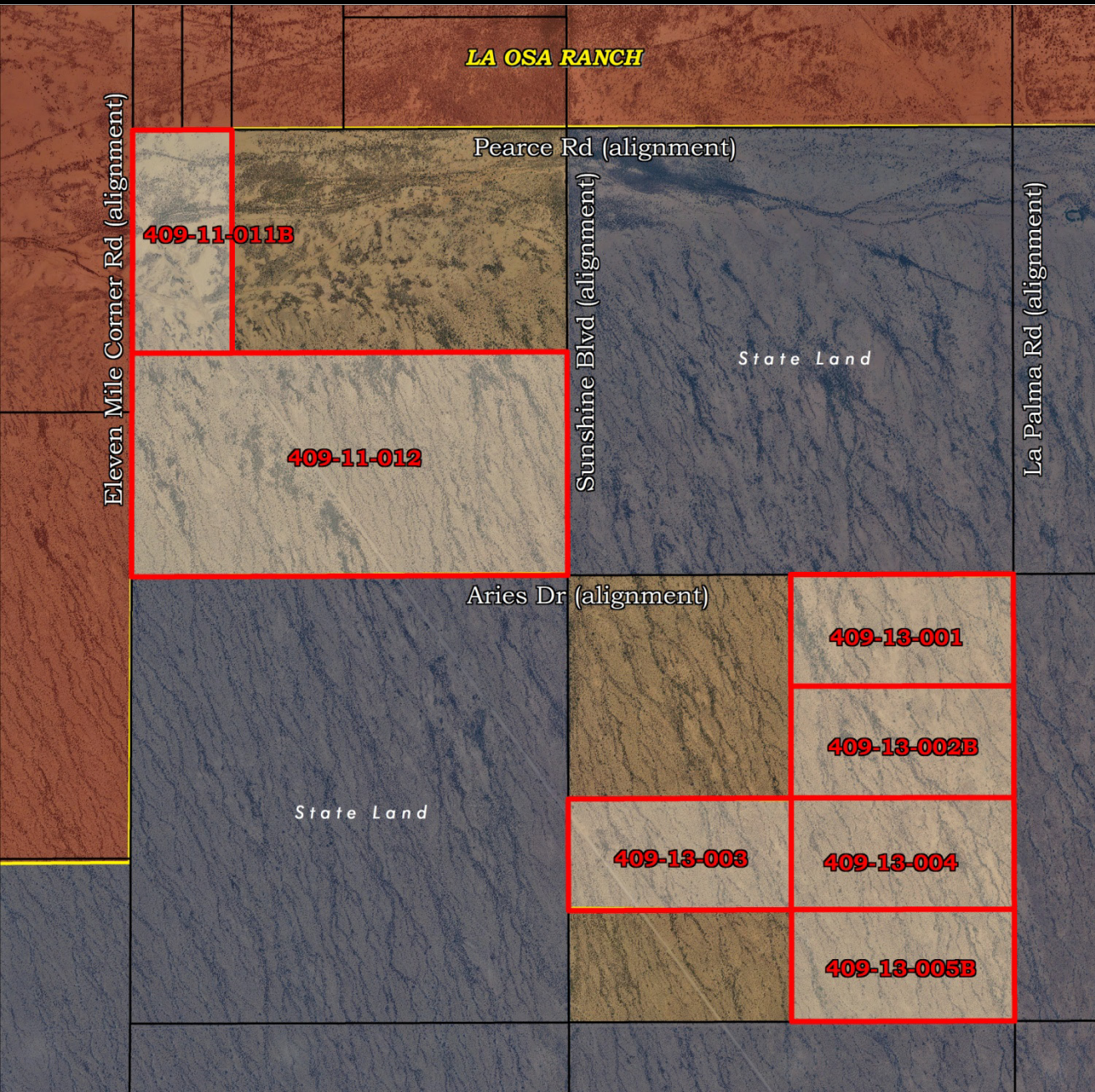


~ EXCLUSIVELY AVAILABLE ~

Eloy ♦ ± 785.5 Gross Acres

SWC Sunshine Blvd & Pearce Rd alignments ♦ Eloy, Pinal County, Arizona 85131

SWC La Palma Rd & Aries Dr alignments ♦ Eloy, Pinal County, Arizona 85131



HIGHLIGHTS

LOCATION ♦	SWC Sunshine Blvd & Pearce Rd SWC La Palma Rd & Aries Dr Eloy, Pinal County, Arizona 85131
PRICE ♦	Submit Sale or Lease
SIZE ♦	± 785.5 Gross Acres
PARCELS ♦	409-11-011B; 409-11-012 409-13-001; 409-13-002B 409-13-003; 409-13-004 409-13-005B
ZONING ♦	GR (General Rural), Pinal County
GENERAL PLAN ♦	Very Low Density Residential (0-1 du/acre)
FLOOD ZONE ♦	Zone X, determined to be outside of the 100 year & 500 year flood plains
TAXES ♦	2024 Assessed taxes : \$8,702.52

FOR MORE INFORMATION CONTACT:

Bryan Morganstern
(602) 790-6999
bryan@skybridgeco.com

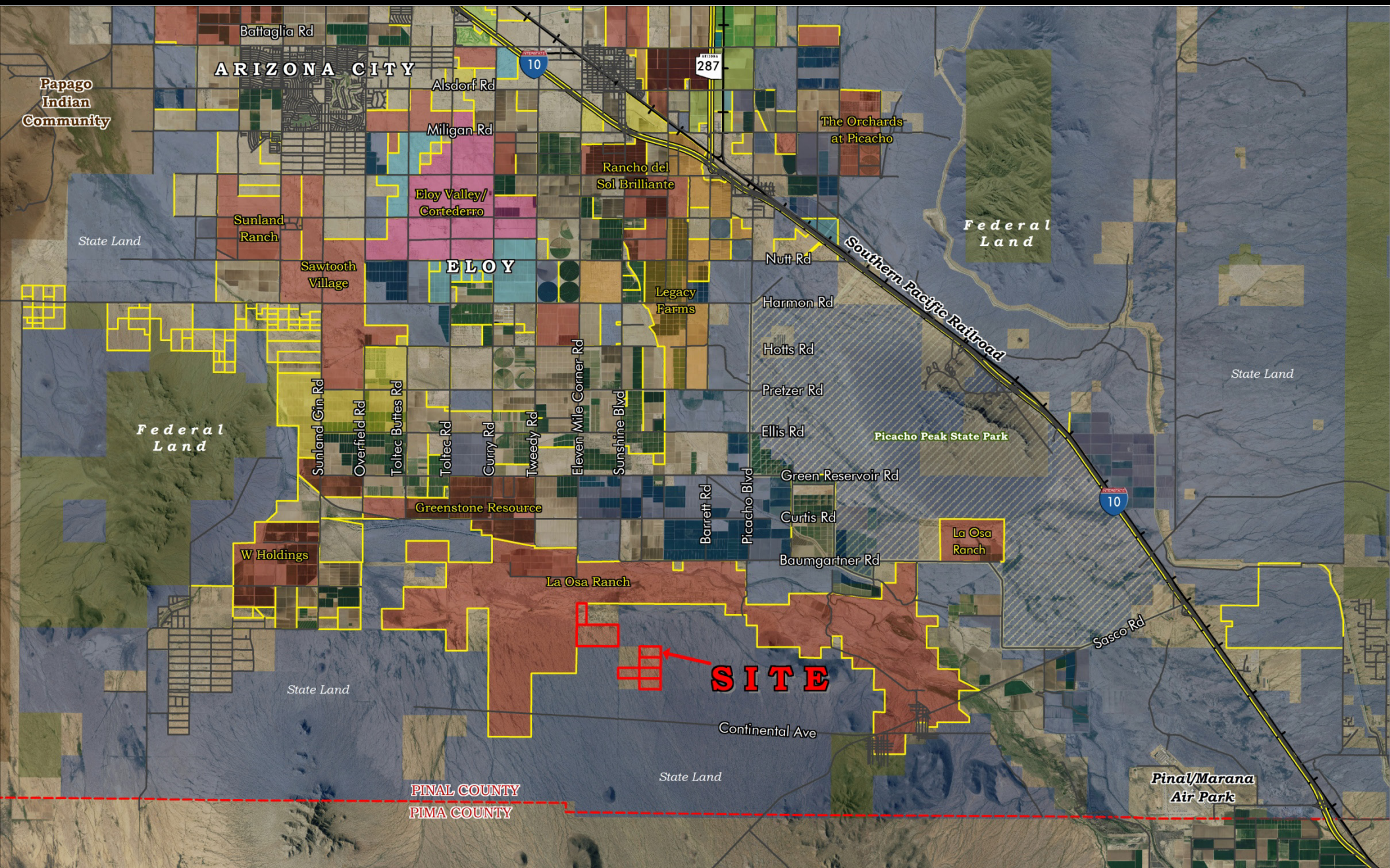
Blake McKee
(602) 430-4496
blake@skybridgeco.com

~ EXCLUSIVELY AVAILABLE ~

Eloy ♦ ± 785.5 Gross Acres

SWC Sunshine Blvd & Pearce Rd alignments ♦ Eloy, Pinal County, Arizona 85131

SWC La Palma Rd & Aries Dr alignments ♦ Eloy, Pinal County, Arizona 85131



The information contained herein has been obtained from sources that we deem reliable. No warranties or representations, expressed or implied, are made as to the accuracy of the information contained herein.

~ EXCLUSIVELY AVAILABLE ~

Eloy ♦ ± 785.5 Gross Acres

SWC Sunshine Blvd & Pearce Rd alignments ♦ Eloy, Pinal County, Arizona 85131

SWC La Palma Rd & Aries Dr alignments ♦ Eloy, Pinal County, Arizona 85131

