

ARROWHEAD MEDICAL PLAZA II

18700 NORTH 64TH DRIVE | GLENDALE, ARIZONA 85308

Medical Offices Available on Campus at Abrazo Arrowhead

REPRESENTED BY

PERRY GABUZZI, CCIM
602.513.5116
perry.gabuzzi@kidder.com

RACHAEL THOMPSON
602.513.5122
rachael.thompson@kidder.com



PROPERTY HIGHLIGHTS

CLASS A, 3-STORY medical office building consisting of \pm 46,000 RSF

GENEROUS tenant improvements available

FIRST floor space available with private exterior entry

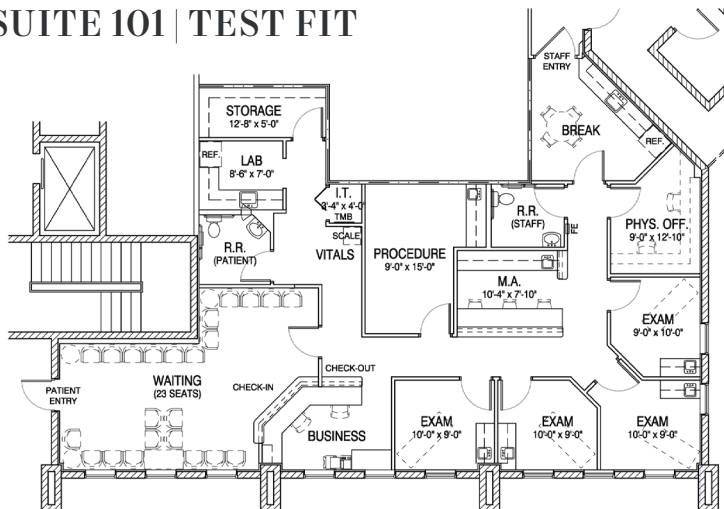
STRONG hospital presence within the building and specialists including cardiology and orthopedics among others

AVAILABILITIES

Suite 101 2,215 SF



SUITE 101 | TEST FIT





STRATEGICALLY LOCATED



3 MILES

TO ARROWHEAD TOWNE
CENTER SHOPPING DISTRICT



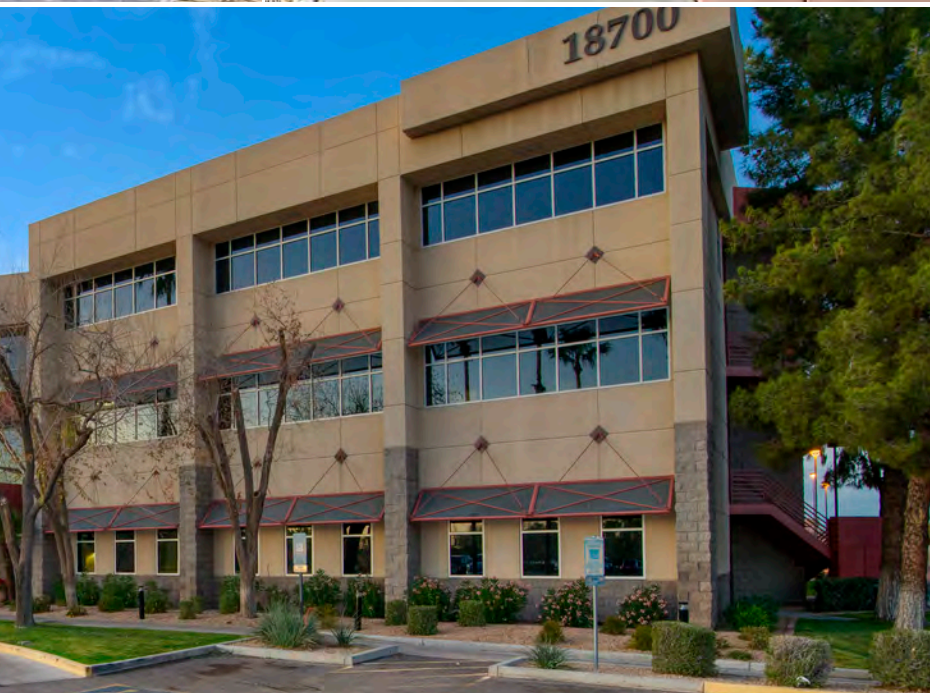
\$95,062

AVERAGE HH INCOME
WITHIN 5 MILES



3 MIN

DRIVE TIME TO LOOP 101



ARROWHEAD MEDICAL PLAZA II

Arrowhead Medical Plaza II is located on the Arrowhead Hospital Campus, a 217-bed nationally recognized acute care hospital providing patient-centered care. The hospital's service lines include diagnostic and international cardiology, comprehensive orthopedic services, a 24-hour emergency care, obstetrics, in-patient and out-patient surgery, women's healthcare and wound care center.



**ARROWHEAD
MEDICAL PLAZA II**

ON CAMPUS

**AT ABRAZO ARROWHEAD
HOSPITAL**

1.1 MILES

**FROM LOOP
101 ACCESS**

4.4 MILES

**FROM BANNER THUNDERBIRD
MEDICAL CENTER**

For leasing information contact

PERRY GABUZZI, CCIM
602.513.5116
perry.gabuzzi@kidder.com

RACHAEL THOMPSON
602.513.5122
rachael.thompson@kidder.com



This information supplied herein is from sources we deem reliable. It is provided without any representation, warranty, or guarantee, expressed or implied as to its accuracy. Prospective Buyer or Tenant should conduct an independent investigation and verification of all matters deemed to be material, including, but not limited to, statements of income and expenses. Consult your attorney, accountant, or other professional advisor.