

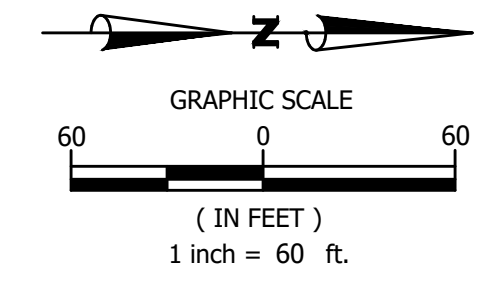
NOTES TO CONTRACTOR:

- EVERY EFFORT HAS BEEN MADE TO ENSURE THAT THE BUILDING INDICATED IN THESE DRAWINGS MATCHES THE ARCHITECT'S LATEST BUILDING AND FOUNDATION PLAN. IT SHALL BE THE CONTRACTOR'S RESPONSIBILITY TO CONFIRM THE AGREEMENT BETWEEN THE BUILDING FOOTPRINT SHOWN IN THESE PLANS AND THE ARCHITECT'S BUILDING FOOTPRINT AND FOUNDATION PLANS. THE CONTRACTOR SHALL NOTIFY THE ENGINEER IMMEDIATELY IF ANY DISCREPANCIES ARE FOUND.
- THE CONTRACTOR SHALL PROTECT AND MAINTAIN ANY EXISTING SLOPES AND INFRASTRUCTURES ON THE SITE (I.E. PONDS, INLETS, ETC.).
- CONTRACTOR TO VIDEO ALL EXISTING SEWER AND DRAIN LINES TO ENSURE THEY ARE CLEAR AND IN PROPER WORKING ORDER. PROVIDE VIDEO TO THE OWNER.
- AFTER THE STORM DRAIN SYSTEM IS COMPLETED THE CONTRACTOR SHALL VIDEO THE SYSTEM AND SUBMIT VIDEO TO THE OWNER FOR REVIEW.
- THE CONTRACTOR SHALL MAINTAIN ACCESS TO THE SITE FOR THE DURATION OF THE PROJECT.
- ALL EARTHWORK SHALL BE PERFORMED IN STRICT COMPLIANCE WITH GEOTECHNICAL RECOMMENDATIONS.
- ALL CONDUIT LOCATIONS FOR POWER, TELEPHONE, AND CABLE SHALL BE COORDINATED WITH ARCHITECTURAL PLANS AND LOCAL UTILITY PROVIDERS.

DEVELOPMENT SITE DATA TABLE	
STATE OF ALABAMA COUNTY OF BALDWIN	
DEVELOPMENT PROPERTY ID:	LOT # 5
ZONING:	BALDWIN COUNTY UNZONED
DEVELOPMENT ACREAGE:	14.39 ACRES ± (627,002 SF ±)
PROPOSED USE:	SHOPPING CENTER
BUILDING SETBACKS:	
U.S. HWY 98:	125' (FROM R.O.W. CL)
OLD BATTLES RD:	75' (FROM R.O.W. CL)
FRONT:	25'
SIDE:	20'
REAR:	25'
PARKING DATA:	
TOTAL SHOPPING CENTER VEHICLE PARKING:	334 SPACES (INC. 14 H/C) (4.97 SPACES PER 1,000 SF)
PUBLIC DEDICATED VEHICLE PARKING:	242 SPACES (INC. 9 H/C) (5.00 SPACES PER 1,000 SF)

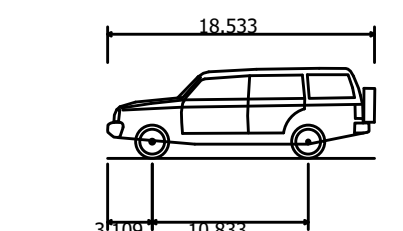
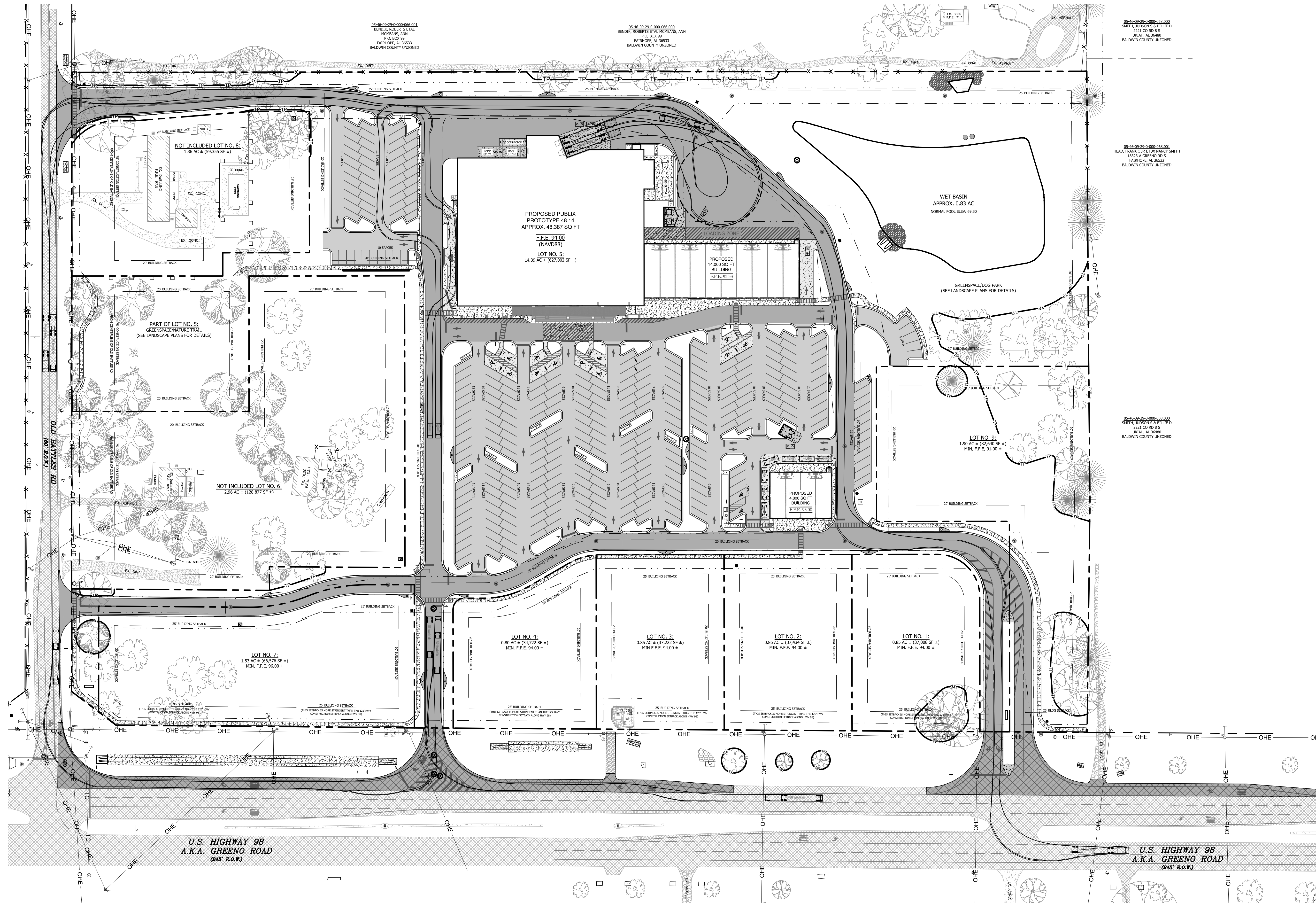
PROPOSED JOINT LAYOUT:

- PROPOSED CONTRACTION/SAWCUT JOINT
- PROPOSED EXPANSION JOINT

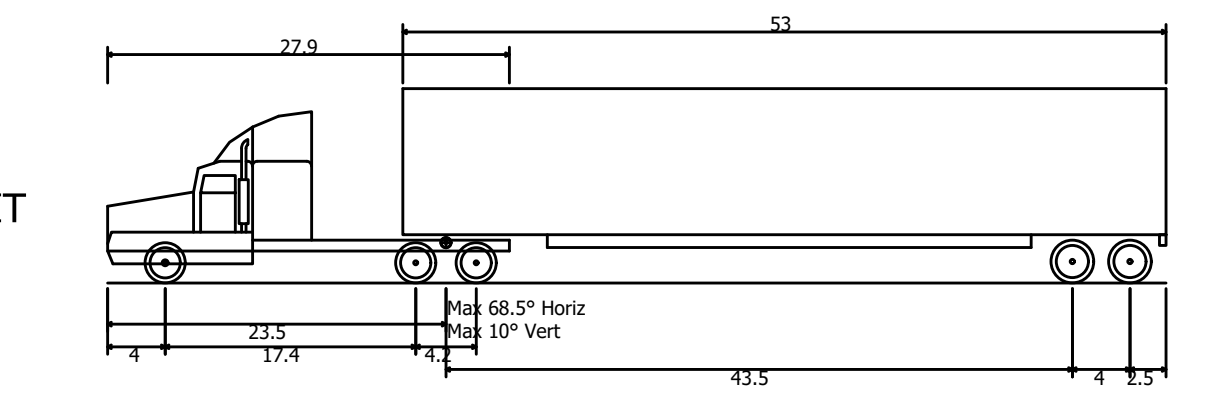


LEGEND

- ⊕ BENCHMARK
- ⊕ CRF CAPPED REBAR FOUND
- OTF OPEN TOP PIPE FOUND
- ⊕ RBF REBAR FOUND
- ⊕ CMF CONCRETE MONUMENT FOUND
- CENTERLINE
- RIGHT-OF-WAY
- PROPERTY LINE
- PROPERTY LINE (ADJACENT)
- EXIST. EASEMENT LINE
- OHE EXIST. OVERHEAD UTILITY AND UTILITY POLE
- GUY EXIST. GUY WIRE AND UTILITY POLE
- TC EXIST. TRAFFIC SIGNAL LINE
- W EXIST. WATER LINE
- SS EXIST. SANITARY SEWER LINE
- GAS EXIST. GAS LINE
- UGC EXIST. UNDER GROUND CABLE LINE
- TEL EXIST. TELEPHONE LINE
- EXIST. WOODEN FENCE
- EXIST. CHAINLINK FENCE
- X EXIST. WIRE FENCE
- X EXIST. SPLIT RAIL FENCE
- EXIST. TREE LINE
- EXIST. PIPE
- PROPOSED EASEMENT LINE
- PROPOSED SETBACK LINE
- PROPOSED 24" CONCRETE CURB & GUTTER
- PROPOSED 6" CONCRETE CURB
- ⊕ PP EXIST. POWER POLE
- ⊕ HTPP EXIST. HIGH TENSION POWER POLE
- ⊕ SP EXIST. SERVICE POLE
- ⊕ LP EXIST. LIGHT POLE
- ⊕ TS EXIST. TRAFFIC SIGNAL POLE
- ⊕ TV EXIST. TRAFFIC SIGNAL VAULT
- ⊕ ET EXIST. ELECTRICAL TRANSFORMER VAULT
- ⊕ G EXIST. GENERATOR
- ⊕ WM EXIST. WATER METER
- ⊕ WP EXIST. WATER PUMP
- ⊕ FH EXIST. FIRE HYDRANT
- ⊕ SM EXIST. SANITARY SEWER MANHOLE
- ⊕ SC EXIST. SANITARY SEWER CLEANOUT
- ⊕ SV EXIST. SANITARY SEWER VALVE
- ⊕ GR EXIST. GAS REGULATOR
- ⊕ CB EXIST. COMMUNICATION BOX VAULT
- ⊕ TP EXIST. TELEPHONE PEDESTAL
- ⊕ FM EXIST. FIBER OPTIC CABLE MARKER
- ⊕ SD EXIST. SATELLITE DISH
- ⊕ HU EXIST. HVAC UNIT
- ⊕ MB EXIST. MAILBOX
- ⊕ SN EXIST. SIGN
- ⊕ SM EXIST. STORM SEWER MANHOLE
- ⊕ GI EXIST. GRATE INLET
- ASPH EXIST. ASPHALT PAVING
- CONC EXIST. CONCRETE
- GRAV EXIST. GRAVEL
- DIRT EXIST. DIRT
- RIP EXIST. RIP RAP
- LD ASP PROPOSED LIGHT DUTY ASPHALT
- HD ASP PROPOSED HEAVY DUTY ASPHALT
- ALDOT ASP PROPOSED ALDOT ASPHALT BUILD-UP
- PEB CONC PROPOSED PEDESTRIAN CONCRETE (BROOM FINISH)
- LD CONC PROPOSED LIGHT DUTY CONCRETE (BROOM FINISH)
- HD CONC PROPOSED HEAVY DUTY CONCRETE (BROOM FINISH)



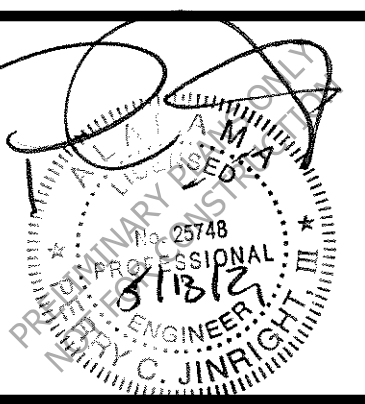
Chevrolet Suburban 3/4 Ton LS
 Overall Length 18.533ft
 Overall Width 6.592ft
 Overall Body Height 6.258ft
 Min Body Ground Clearance 6.990ft
 Track Width 6.592ft
 Lock-to-lock time 4.00s
 Curb to Curb Turning Radius 22.650ft



WB-67 - Interstate Semi-Trailer
 Overall Length 73.501ft
 Overall Width 8.500ft
 Overall Body Height 13.500ft
 Min Body Ground Clearance 1.334ft
 Max Track Width 8.500ft
 Lock-to-lock time 6.00s
 Max Steering Angle (Virtual) 28.40°

OLD BATTLES RD
 SPEED LIMIT 35
 POSTED SPEED LIMIT

U.S. HWY 98
 SPEED LIMIT 55
 POSTED SPEED LIMIT



NO.	REVISION	DATE	APPR.