

4,700 SF AVAILABLE

For Lease or Sale

NOVEMBER 1ST

\$16.00 PSF

TRIPLE NET LEASE

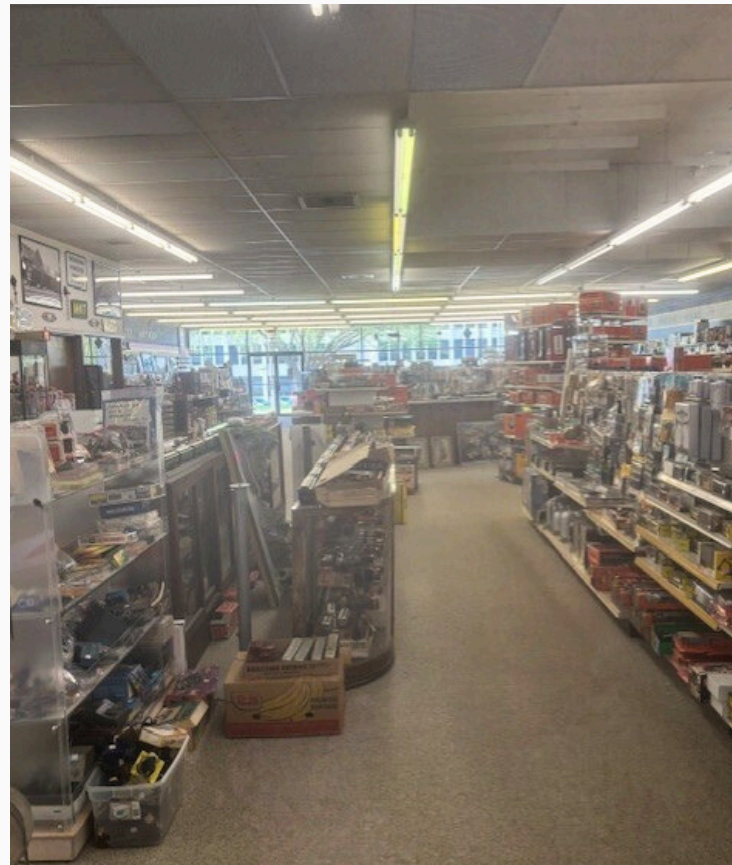
2025 NETS estimated

at \$5.19 PSF



FLEX SPACE FOR LEASE

8909 SANTA FE DR OVERLAND PARK, KS



Property Highlights

4,700 SF Available For Lease/Sale

Full basement - 4,300 SF

Free-standing building

Monument signage available

Close to downtown Overland Park

Member of



The Mission of Prism Real Estate Services, LLC™ is to improve the lives of people in our communities, one property at a time.

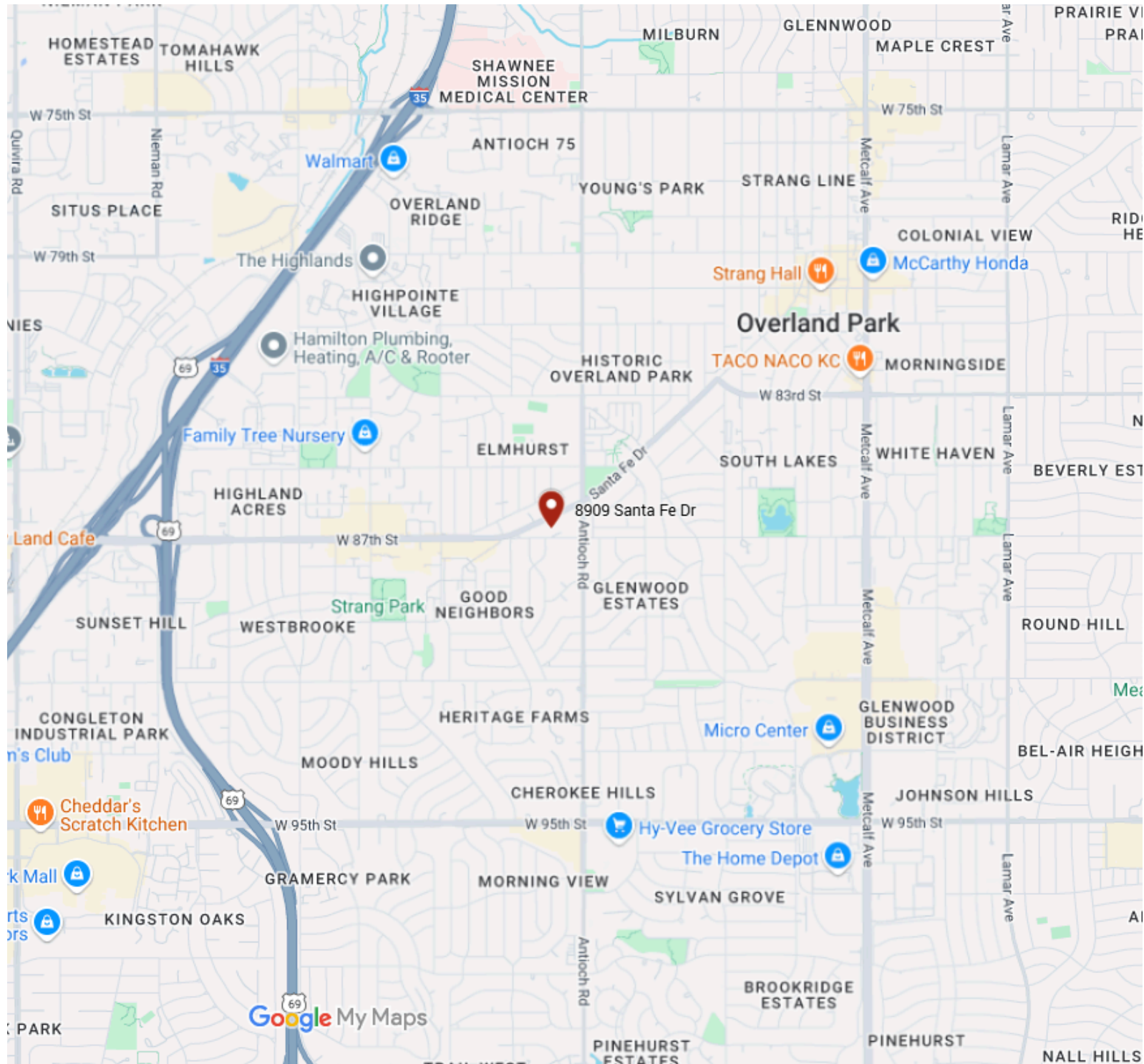


JACK SCHREIBER

📞 913.320.3001

✉️ JSchreiber@prismres.com

8909 SANTA FE DRIVE OVERLAND PARK, KS



JACK SCHREIBER

📞 913.320.3001

✉️ JSchreiber@prismres.com

8909 Santa Fe Drive Map