



# GOLD AND COMPANY, LLC

[WWW.GOLDCOMMERCIAL.NET](http://WWW.GOLDCOMMERCIAL.NET)

*Commercial Real Estate in the Baltimore Metropolitan Area*



**814 Light St., Baltimore, MD 21230**

## Gold And Company, LLC

**For More Information:**

**Jim Chivers**  
443.928.7522 cell  
jim@goldcommercial.net

**Will McCullough**  
410.292.2985 cell  
will@goldcommercial.net

[www.goldcommercial.net](http://www.goldcommercial.net)

- +/- 48,000 sf Building Available FOR SALE
- Located in the Heart of Federal Hill
- C-1 Zoning—Baltimore City
- +/- 20 Interior Parking Spaces
- Includes 36 E. Churchill St.
  - +/- 20 Surface Parking Spaces
  - R-8 Zoning (Dense Residential)
- High Visibility and Accessibility
- Ideal for Redevelopment or Owner-User Facility
- Contact For More Information

This property offering is subject to change without notice. All information is deemed reliable but not guaranteed.



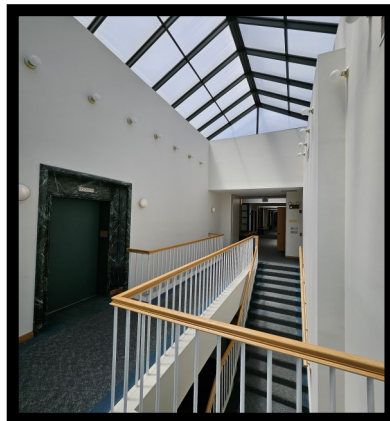


# **Gold And Company**

**Commercial Real Estate in the Baltimore Metropolitan Area**

**814 Light St., Baltimore, MD 21230**

## **Interior Photos**



**Jim Chivers / Will McCullough**  
**Gold And Company, LLC**  
**5601 Newbury St.**  
**Baltimore, MD 21209**

**410.578.1300 (Office)**

**[www.goldcommercial.net](http://www.goldcommercial.net)**





# ***Gold And Company***

***Commercial Real Estate in the Baltimore Metropolitan Area***

**814 Light St., Baltimore, MD 21230**

## **Property Layout**



**Jim Chivers / Will McCullough**  
**Gold And Company, LLC**  
**5601 Newbury St.**  
**Baltimore, MD 21209**

**410.578.1300 (Office)**

**[www.goldcommercial.net](http://www.goldcommercial.net)**

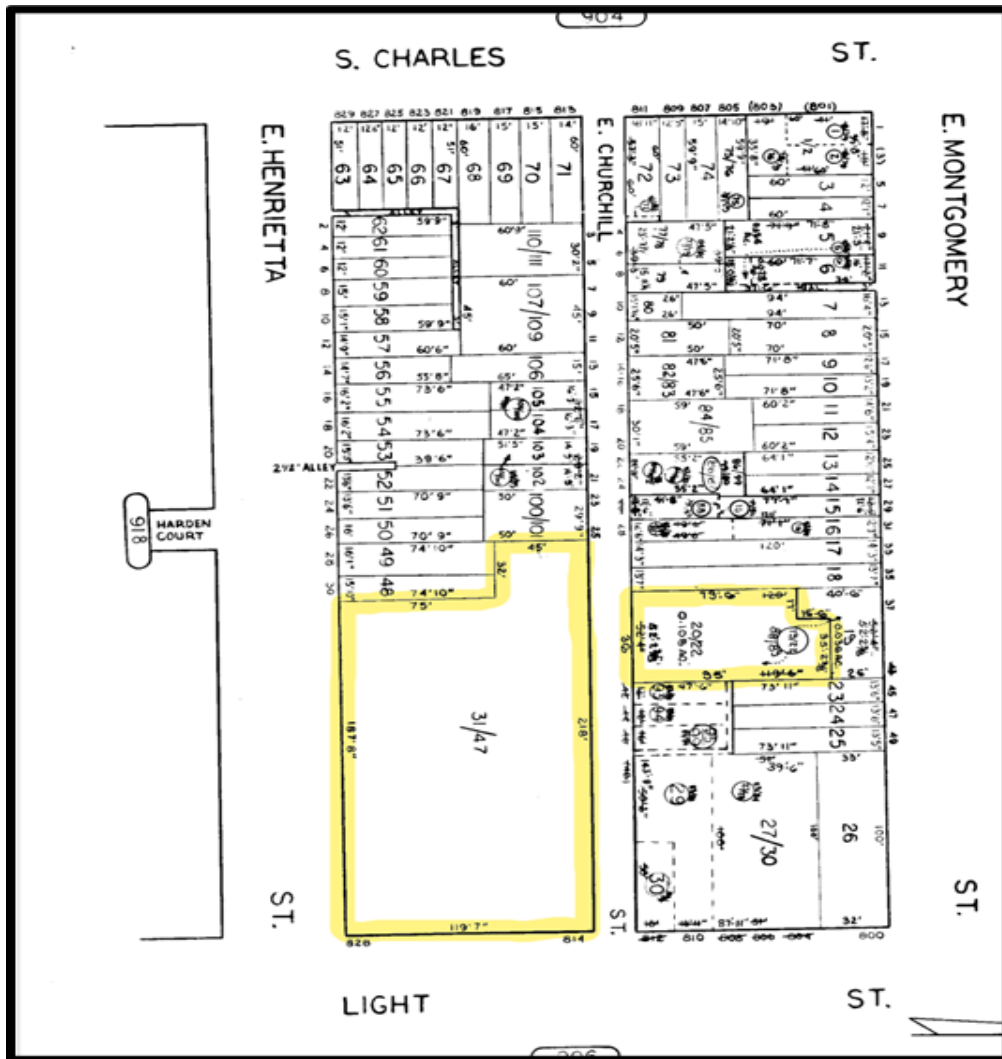


# Gold And Company

Commercial Real Estate in the Baltimore Metropolitan Area

**814 Light St., Baltimore, MD 21230**

## Block Map



**Jim Chivers / Will McCullough**  
**Gold And Company, LLC**  
**5601 Newbury St.**  
**Baltimore, MD 21209**

**410.578.1300 (Office)**

**[www.goldcommercial.net](http://www.goldcommercial.net)**





# ***Gold And Company***

***Commercial Real Estate in the Baltimore Metropolitan Area***

**814 Light St., Baltimore, MD 21230**

## **Birds Eye View**



**Jim Chivers / Will McCullough**  
**Gold And Company, LLC**  
**5601 Newbury St.**  
**Baltimore, MD 21209**

**410.578.1300 (Office)**

**[www.goldcommercial.net](http://www.goldcommercial.net)**



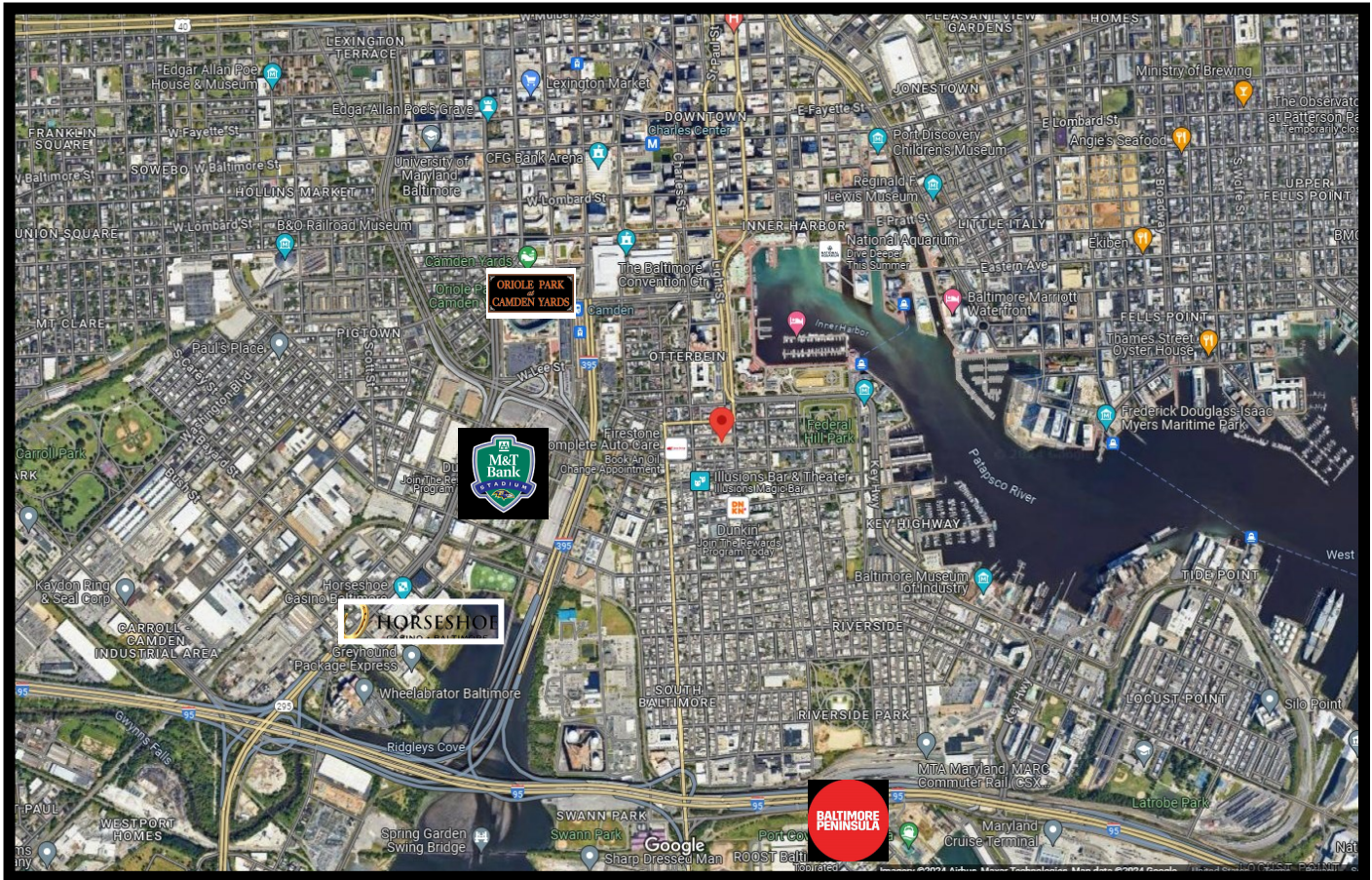


# Gold And Company

Commercial Real Estate in the Baltimore Metropolitan Area

**814 Light St., Baltimore, MD 21230**

## Map



**Jim Chivers / Will McCullough**  
**Gold And Company, LLC**  
**5601 Newbury St.**  
**Baltimore, MD 21209**

**410.578.1300 (Office)**  
**www.goldcommercial.net**