

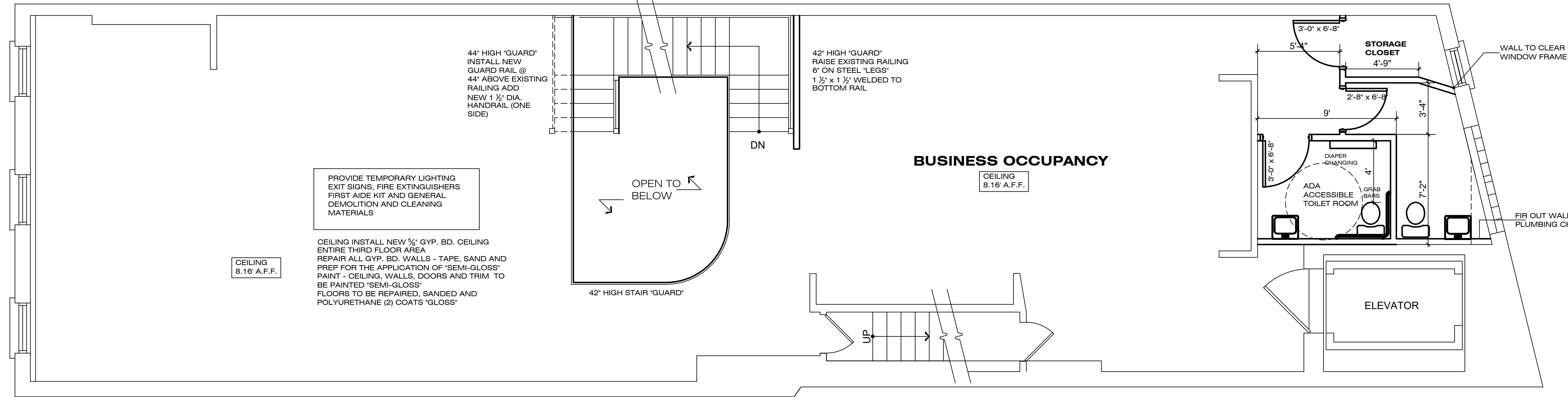
SECOND FLOOR - ELECTRICAL / LIGHTING PLAN

1/4" = 1' - 0"

GENERAL ELECTRICAL NOTES:  
LANDLORD'S ELECTRICAL CONTRACTOR SHALL UPGRADE EXISTING FUSE BOXES TO ELECTRICAL BREAKER PANELS  
INSTALL ALL BRANCH WIRING TO LIGHTING, PROVIDE ILLUMINATED EXIT SIGNS, EMERGENCY LIGHTING WITH BACK-UP BATTERY, NITE LIGHTS, WALL OUTLETS AND ELECTRICAL SERVICE TO (3) MINI SPLIT HEAT PUMPS WITH REMOVE DISCONNECTS  
TENANT TO SUPPLY ALL TRACK LIGHTING INCLUDING TRACKS AND FIXTURES  
TENANT TO SUPPLY ALL RECESSED 'ACCENT' LIGHTING

ELEC. LEGEND

- COMBINATION CARBON MONOXIDE (SMOKE) DETECTOR (RESIDENTIAL ONLY)
- SMOKE DETECTOR
- NEW HALLO LED RECESSED CEILING LIGHT FIXTURE
- NEW EXTERIOR WALL LIGHT
- NEW DUPLEX WALL OUTLET
- NEW DUPLEX WALL OUTLET W/ GROUND FAULT INTERRUPT
- APPLIANCE OUTLET DRYER 208V 40 AMPS DISHWASHER 15 AMPS
- WALL LIGHT SWITCH
- THREE WAY WALL LIGHT SWITCH
- EXHAUST FAN WITH LIGHT NUTONE OR EQUAL 50 CFM 1/2 BATH 75 CFM FULL BATH ALL EXHAUST DUCTWORK MUST EXTEND TO EXTERIOR (30 MIN.)
- DUAL HEAD EMERGENCY LIGHT WITH 90 MIN. BATTERY PACK
- ILLUMINATED EXIT SIGN WITH ARROWS AND 90 MIN. BATTERY PACK
- COMBINATION DUAL HEAD EMERGENCY LIGHT WITH ILLUMINATED EXIT SIGN WITH ARROWS AND 90 MIN. BATTERY PACK



SECOND FLOOR PLAN DEMOLITION

1/4" = 1' - 0"

LEGEND

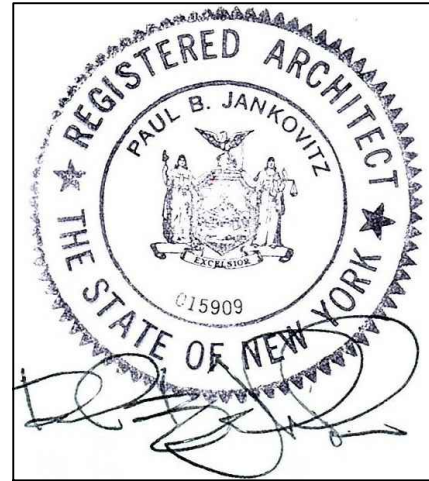
- EXISTING CONSTRUCTION (TYP. WALL) TO REMAIN
- INDICATES EXISTING WALL TO BE REMOVED
- INDICATES EXISTING WALL WITH DOOR/FRAME TO BE REMOVED
- INDICATES EXISTING WALL WITH WINDOW/FRAME TO BE REMOVED
- INDICATES EXISTING WALL WITH DOOR/FRAME TO REMAIN
- INDICATES EXISTING WALL WITH WINDOW/FRAME TO REMAIN
- INDICATES NEW WALL (NEW CONSTRUCTION)



PAUL B. JANKOVITZ, R.A.  
ARCHITECT/PLANNER  
CT. N.J. NY.  
62 YALE COURT  
KINGSTON, NEW YORK 12401  
845-532-3464  
PBJAIA@AOL.COM

IT IS A VIOLATION OF THE LAW FOR ANY PERSON UNLESS ACTING UNDER THE DIRECTION OF A LICENSED ARCHITECT, TO ALTER THE DOCUMENT IN ANY WAY IF THE DOCUMENT BEARING THE SEAL OF AN ARCHITECT IS ALTERED. THE ALTERING ARCHITECT SHALL AFFIX HIS/HER SEAL AND THE NOTATION "ALtered BY" FOLLOWED BY HIS/HER SIGNATURE AND THE DATE OF SUCH ALTERATION AND A BRIEF DESCRIPTION OF THE ALTERATION.

MAGIC HILLS  
328 WALL ST.  
KINGSTON, NY 12401  
INTERIOR FIT-UP PLAN



REVISIONS

NO.	DATE	DESCRIPTION
1.	6.10.22	COMMUNICATION CABLE LOCATIONS
2.	7.29.22	BREAKER OUTLET LOCATIONS 30 AMP OUTLETS

328 WALL ST.  
KINGSTON, NY

DATE:  
03.22.22  
PROJECT NO.  
05192021K  
SCALE:  
1/4" = 1' - 0"  
DRAWING NO.  
S-6.0