



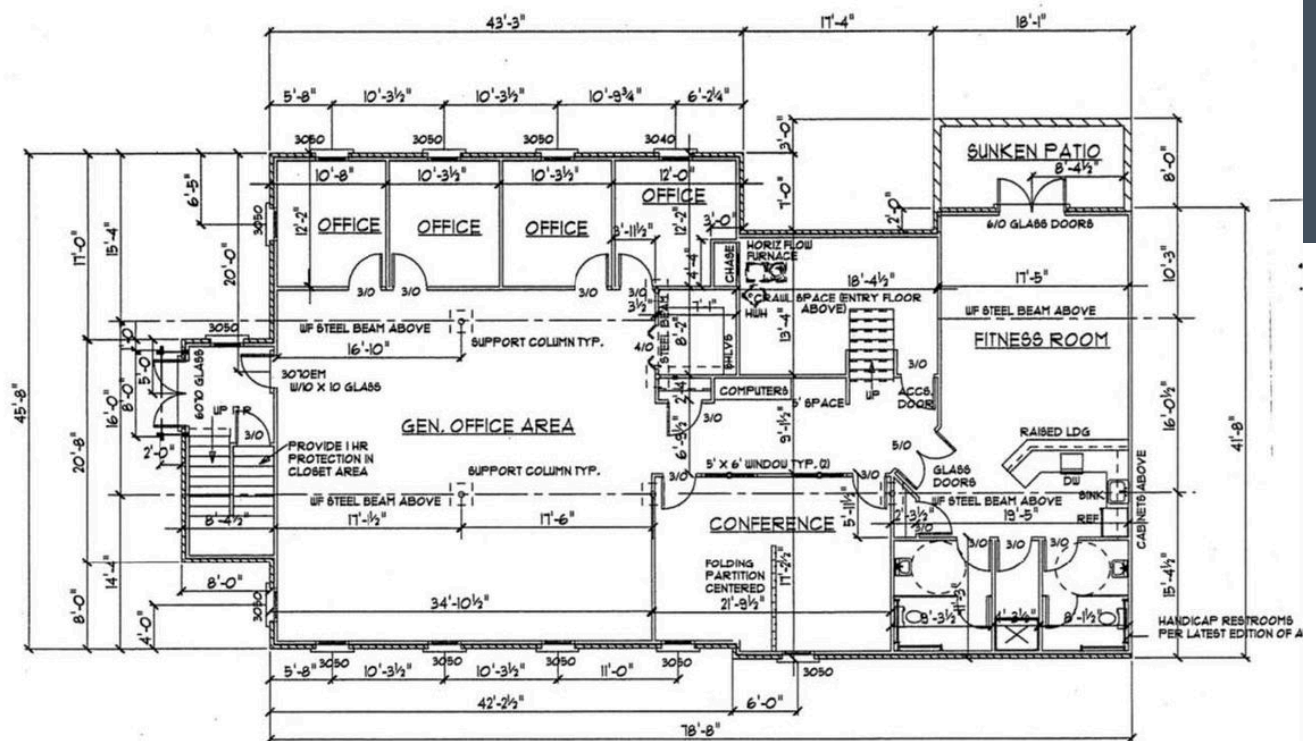
53842 Generations Dr.

South Bend, IN, 46635

Highlights

- Available Space: ±3,553 SF office suite within a ±6,760 SF professional office building
- Location: Prime northeast South Bend location in the Foundation Center Office Park near SR 23 & Douglas Road
- Layout: Combination of private offices, open work areas, conference room, and kitchenette — ideal for professional or medical users
- Features: Ample on-site parking, signage opportunity, and professional curb appeal in a well-maintained brick building

Lease Rate	\$13.25 (NN)
Leasable	3,553 SF
Building Size (SF)	6,760 SF
Zoning	B
Traffic Count	ADT 21,737 (SR 23)



Photos

53779 Generations Dr., South Bend, IN 46635



Retailer Map

