



SUBLEASE | INDUSTRIAL



1781-1791 S Mojave Rd
Las Vegas, NV 89104

LARKIN
INDUSTRIAL GROUP

NAIVEgas
COMMERCIAL REAL ESTATE SERVICES, WORLDWIDE

8945 W. Russell Road, Suite 110
Las Vegas, NV. 89148

702 383 3383 | naivegas.com

Offered By: **Eric Larkin, MBA, CCIM, SIOR**
Partner | LIC#BS.0073906
cell: 702.279.2479
direct: 702.534.1713
email: elarkin@naivegas.com

Leslie Houston
Associate | LIC#S.01879121
cell: 660.287.2253
direct: 702.534.1705
email: lhouston@naivegas.com

NO WARRANTY OR REPRESENTATION, EXPRESS OR IMPLIED, IS MADE AS TO THE ACCURACY OF THE INFORMATION CONTAINED HEREIN, AND THE SAME IS SUBMITTED SUBJECT TO ERRORS, OMISSIONS, CHANGE OF PRICE, RENTAL OR OTHER CONDITIONS. PRIOR SALE, LEASE OR FINANCING, OR WITHDRAWAL WITHOUT NOTICE, AND OF ANY SPECIAL LISTING CONDITIONS IMPOSED BY OUR PRINCIPAL. NO WARRANTIES OR REPRESENTATIONS ARE MADE AS TO THE CONDITION OF THE PROPERTY OR ANY HAZARDS CONTAINED THEREIN ARE TO BE IMPLIED. THE INFORMATION PORTRAYED ON THE MAP, WHILE NOT GUARANTEED, HAS BEEN SECURED FROM SOURCES DEEMED RELIABLE. CONSULT A SURVEYOR FOR PRECISE BOUNDARIES.

Property Highlights

- ±8,510 Total SF
- 1791: ±6,790 SF
- 1781: ±1,720 SF
- Paved/Secured Yard
- ±1.14 AC
- M-1 Zoning
- Two (2) Freestanding Buildings
- 1974/1978 Construction
- Paint Booth Included

SUBLEASE DETAILS

Total Square Feet:
±8,510 SF

Sublease Rate:
\$1.22/SF/MO
ALL-IN MG

Expiration Date:
01/31/2021

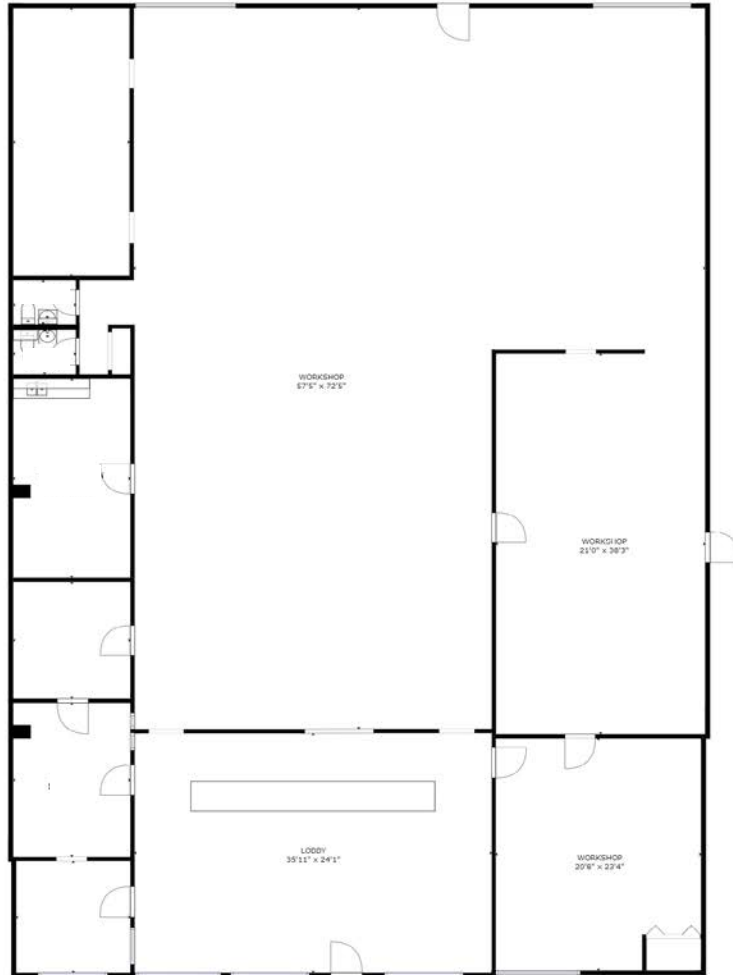
**AVAILABLE FOR
IMMEDIATE OCCUPANCY**

> FOR LEASE INFORMATION
<http://helloarti.com/view/35722>



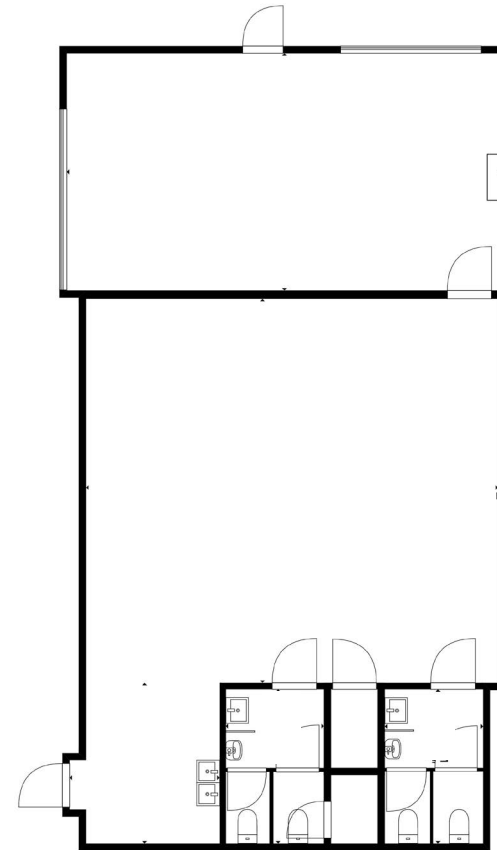
Floor Plan

BLDG | 1791



[> CLICK HERE FOR VIRTUAL TOUR](#)

BLDG | 1781



[> CLICK HERE FOR VIRTUAL TOUR](#)

Location

LAS VEGAS STRIP

DOWNTOWN LAS VEGAS



Photos

BLDG | 1791



Photos

BLDG | 1781



SUBLEASE | INDUSTRIAL