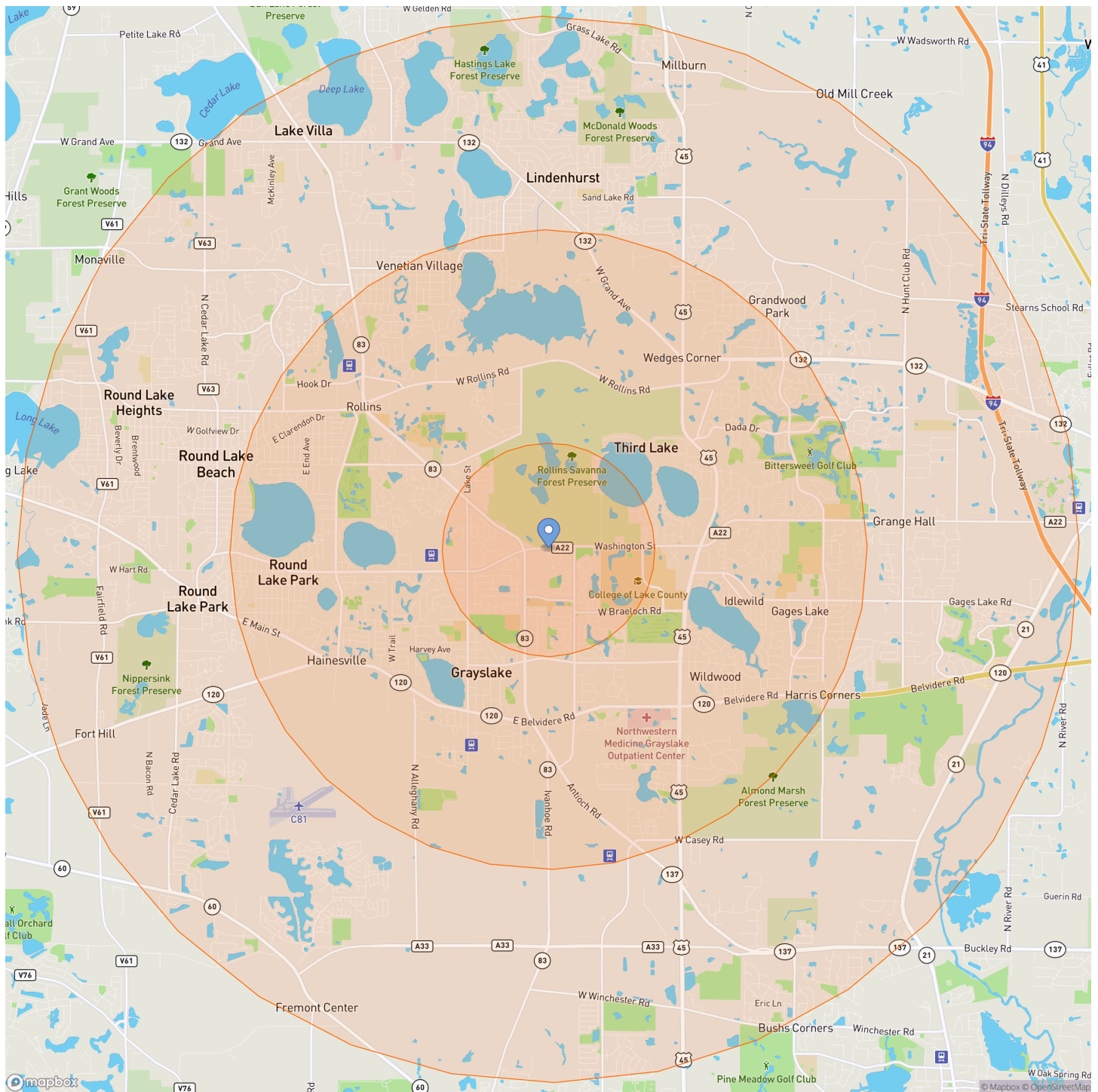


# RADIUS REPORT FOR 1, 3, and 5 miles around SEC State Rt. 83 & Washington St., Grayslake, IL 60030

PREPARED FOR: Robert Frank  
DATE: March 09, 2023

## MAP



# DEMOGRAPHICS

## Population

	1 mile	3 miles	5 miles
Population	7,060	60,244	140,266

Source: U.S. Census Bureau, 2021 American Community Survey, Tables B01003

## Income

	1 mile		3 miles		5 miles	
Median Household Income <small>(in 2021 inflation adjusted dollars)</small>	\$103,535		\$99,248		\$99,187	
Mean Household Income <small>(in 2021 inflation adjusted dollars)</small>	\$121,119		\$124,080		\$121,903	
Households	2,657		20,956		48,582	
Less than \$25,000	367	14%	1,951	9%	4,644	10%
\$25,000 to \$49,999	294	11%	2,886	14%	6,592	14%
\$50,000 to \$74,999	204	8%	2,783	13%	6,855	14%
\$75,000 to \$99,999	421	16%	2,946	14%	6,407	13%
\$100,000 to \$199,999	896	34%	6,943	33%	16,564	34%
\$200,000 or more	475	18%	3,447	16%	7,519	15%

Source: U.S. Census Bureau, 2021 American Community Survey, Tables B19001, B19013, B19025

## Age

	1 mile		3 miles		5 miles	
Median Age	37		37		38	
Population	7,060		60,244		140,266	
9 & under	861	12%	7,714	13%	17,407	12%
10 to 19	934	13%	8,485	14%	21,293	15%
20 to 29	1,010	14%	8,133	14%	17,855	13%
30 to 39	1,056	15%	8,189	14%	18,079	13%
40 to 49	866	12%	7,938	13%	18,925	13%
50 to 59	1,150	16%	8,850	15%	20,930	15%
60 to 69	798	11%	6,580	11%	15,029	11%
70 & over	385	5%	4,356	7%	10,748	8%

Source: U.S. Census Bureau, 2021 American Community Survey, Tables B01001

## Race & Ethnicity

	1 mile		3 miles		5 miles	
Population	7,060		60,244		140,266	
White	4,992	71%	37,934	63%	86,322	62%
Black	263	4%	2,745	5%	6,412	5%
American Indian	10	0%	23	0%	108	0%
Asian	415	6%	3,759	6%	10,108	7%
Pacific Islander	6	0%	57	0%	57	0%
Other race	11	0%	222	0%	553	0%
Two or more races	458	6%	2,267	4%	4,029	3%
Hispanic	905	13%	13,238	22%	32,677	23%

Source: U.S. Census Bureau, 2021 American Community Survey, Tables B03002

## Educational Attainment

	1 mile		3 miles		5 miles	
Population 25 years & Over	4,744		39,677		91,924	
No high school diploma	109	2%	3,694	9%	9,057	10%
High school graduate or equal	615	13%	7,924	20%	20,169	22%
Some college	885	19%	7,967	20%	18,187	20%
Associate's degree	341	7%	2,920	7%	6,757	7%
Bachelor's degree	1,754	37%	10,631	27%	23,847	26%
Masters, doctorate, professional	1,041	22%	6,543	16%	13,905	15%

Source: U.S. Census Bureau, 2021 American Community Survey, Tables B15002

## Employment Status

	1 mile		3 miles		5 miles	
Population 16 years & Over	5,662		47,507		110,329	
In labor force	4,199	74%	33,999	72%	78,921	72%
Civilian labor force	4,145	73%	33,669	71%	78,347	71%
Employed	3,848	68%	31,130	66%	73,404	67%
Unemployed	297	5%	2,540	5%	4,942	4%
In armed forces	54	1%	330	1%	574	1%
Not in labor force	1,463	26%	13,508	28%	31,408	28%

Source: U.S. Census Bureau, 2021 American Community Survey, Tables B23025

## Households

	1 mile		3 miles		5 miles	
Households	2,657		20,956		48,582	
Family households	1,834	69%	15,465	74%	35,930	74%
Married couple family	1,583	60%	12,804	61%	29,164	60%
With own children under 18	757	28%	5,773	28%	13,444	28%
Other family	251	9%	2,662	13%	6,766	14%
Single male householder with own children under 18	36	1%	280	1%	916	2%
Single female householder with own children under 18	104	4%	1,074	5%	2,573	5%
Nonfamily households	823	31%	5,491	26%	12,652	26%

Source: U.S. Census Bureau, 2021 American Community Survey, Tables B11001, B11003

## Housing Units

	1 mile		3 miles		5 miles	
Housing Units	2,745		21,912		50,865	
Occupied Housing Units	2,657		20,956		48,582	
Owner occupied units	1,890	71%	16,601	79%	38,863	80%
Renter occupied units	767	29%	4,355	21%	9,719	20%

Source: U.S. Census Bureau, 2021 American Community Survey, Tables B25024, B25003

## Housing Unit Value

	1 mile		3 miles		5 miles	
Owner Occupied Housing Units	1,890		16,601		38,863	
Less than \$100,000	123	7%	967	6%	2,674	7%
\$100,000 to \$199,999	654	35%	5,953	36%	13,785	35%
\$200,000 to \$299,999	741	39%	5,429	33%	11,999	31%
\$300,000 to \$399,999	277	15%	2,691	16%	6,293	16%
\$400,000 to \$499,999	47	2%	1,113	7%	2,370	6%
\$500,000 or more	48	3%	449	3%	1,743	4%

Source: U.S. Census Bureau, 2021 American Community Survey, Tables B25075

## Detailed Age

	1 mile		3 miles		5 miles	
Population	7,060		60,244		140,266	
<b>Male</b>	<b>3,650</b>	<b>52%</b>	<b>30,880</b>	<b>51%</b>	<b>71,349</b>	<b>51%</b>
Under 5 years	373	5%	2,059	3%	4,272	3%
5 to 9 years	156	2%	2,025	3%	4,759	3%
10 to 14 years	282	4%	2,105	3%	4,997	4%
15 to 17 years	151	2%	1,467	2%	3,942	3%
18 and 19 years	66	1%	851	1%	1,996	1%
20 years	82	1%	350	1%	1,168	1%
21 years	78	1%	578	1%	1,262	1%
22 to 24 years	170	2%	1,332	2%	2,994	2%
25 to 29 years	192	3%	2,064	3%	4,384	3%
30 to 34 years	227	3%	1,821	3%	4,143	3%
35 to 39 years	353	5%	2,453	4%	5,342	4%
40 to 44 years	153	2%	1,858	3%	4,197	3%
45 to 49 years	253	4%	2,119	4%	4,835	3%
50 to 54 years	289	4%	2,279	4%	5,672	4%
55 to 59 years	274	4%	2,258	4%	5,365	4%
60 and 61 years	93	1%	1,068	2%	2,063	1%
62 to 64 years	98	1%	840	1%	2,108	2%
65 and 66 years	74	1%	482	1%	1,170	1%
67 to 69 years	139	2%	838	1%	1,946	1%
70 to 74 years	62	1%	834	1%	2,095	1%
75 to 79 years	57	1%	558	1%	1,093	1%
80 to 84 years	21	0%	297	0%	736	1%
85 years and over	10	0%	344	1%	810	1%
<b>Female:</b>	<b>3,410</b>	<b>48%</b>	<b>29,364</b>	<b>49%</b>	<b>68,917</b>	<b>49%</b>
Under 5 years	185	3%	1,555	3%	3,881	3%
5 to 9 years	146	2%	2,076	3%	4,495	3%
10 to 14 years	179	3%	2,004	3%	5,080	4%
15 to 17 years	116	2%	1,180	2%	3,160	2%
18 and 19 years	140	2%	878	1%	2,118	2%
20 years	13	0%	358	1%	643	0%
21 years	10	0%	439	1%	779	1%
22 to 24 years	169	2%	1,311	2%	2,796	2%
25 to 29 years	297	4%	1,701	3%	3,829	3%
30 to 34 years	279	4%	1,799	3%	4,020	3%
35 to 39 years	197	3%	2,116	4%	4,575	3%
40 to 44 years	192	3%	1,845	3%	4,532	3%
45 to 49 years	268	4%	2,115	4%	5,361	4%
50 to 54 years	278	4%	2,167	4%	5,143	4%
55 to 59 years	310	4%	2,145	4%	4,750	3%
60 and 61 years	95	1%	847	1%	2,045	1%
62 to 64 years	100	1%	1,081	2%	2,406	2%
65 and 66 years	77	1%	628	1%	1,422	1%
67 to 69 years	123	2%	796	1%	1,869	1%
70 to 74 years	97	1%	900	1%	2,522	2%
75 to 79 years	123	2%	711	1%	1,625	1%
80 to 84 years	1	0%	420	1%	956	1%
85 years and over	16	0%	292	0%	912	1%

Source: U.S. Census Bureau, 2021 American Community Survey, Tables B01001, B01003. The numbers in the above table may not total up due to rounding.

# POPULATION PROJECTIONS

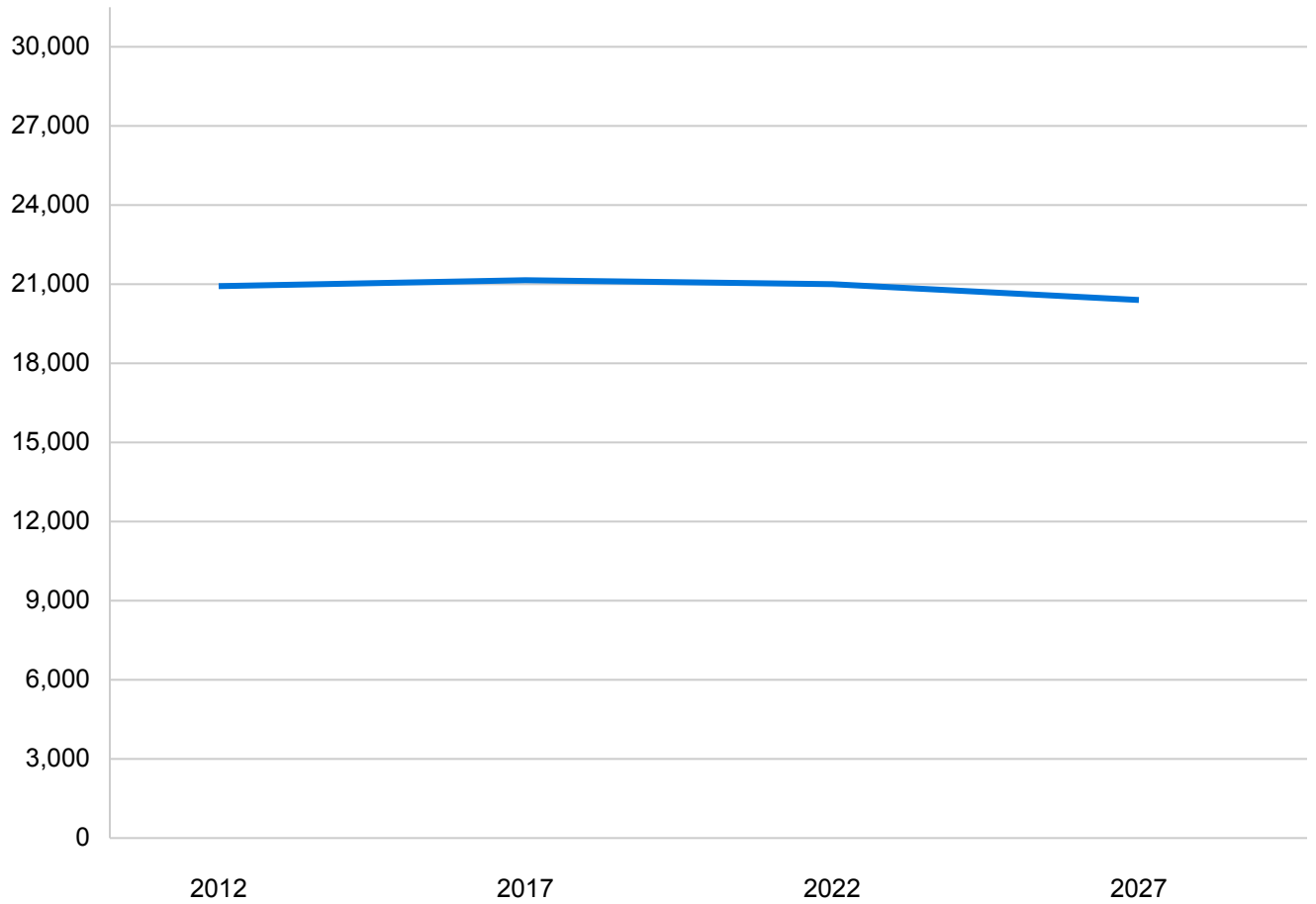
State and county population projections.

	2000	2010	2020	2030	% Population Change			% Population Change 2020-2030
					2000-2010	2010-2020	2020-2030	
Illinois	12,419,293	12,830,632	12,805,000	12,790,000				0%
Lake County	644,356	703,462	751,182	795,649				6%

Source: Illinois Department of Public Health, Office of Policy, Planning and Statistics, Population Projections for Illinois Counties: 2010 to 2030. April 2021.

# CITY POPULATION PROJECTIONS

## Grayslake Population, 2012-2027



Year	Population	Percent Change
2012	20,943	
2017	21,168	1%
2022	21,033	-1%
2027	20,399	-3%

Source: US Census Bureau. 2012 American Community Survey 5-Year Estimates. B01003 TOTAL POPULATION. US Census Bureau. 2017 American Community Survey 5-Year Estimates. B01003 TOTAL POPULATION. Applied Geographic Solutions. Estimates and Projections. 2022B.

## METHODOLOGY

---

First, we subtract the 2021 US Census Bureau's water areas from the 2021 block groups. Then we calculate the project's radiuses, the block groups minus water areas that intersect the radiuses, and the percent of each block group's area that's in the radiuses (overlap). Next, the overlap percent is multiplied by the Census demographics for each block group. Finally, we sum the overlap times the demographics for all block groups that intersect a radius to produce the demographic estimate for the radius.

The benefits of this methodology are that it allows for:

1. the use of the **most current data** for small area geographies from the US Census Bureau;
2. the estimation of demographics for radius distances using dissimilar shaped Census block groups;
3. **data comparability** (because estimates for small radiuses and large radiuses use the same methodology, geographies and datasets); and
4. improved estimates along coastlines and large water bodies by removing water areas.

This methodology assumes that the **population is equally distributed** throughout a block group. This assumption can result in unlikely estimates for small radiuses (i.e. 1 mile) in rural areas with low population densities and thus, large geographic area block groups.

If you have any questions, you can reach Cubit at 1.800.939.2130 or at [www.cubitplanning.com](http://www.cubitplanning.com).

### CUBIT

Prepared by Cubit  
6800 West Gate Blvd. Ste. 132-366  
Austin, TX 78745-4648  
[www.cubitplanning.com](http://www.cubitplanning.com)  
p. 1.800.939.2130