

**WELL-ESTABLISHED RETAIL CENTER
LOCATED ON N. CEDAR IN MASON, MI**



FOR LEASE
558 S. Cedar St.
Mason, MI

AVAILABLE:
SUITE B: 9,120 SF AVAILABLE 8/1/2026
SUITE C: 9,800 SF
CAN BE COMBINED

SUITE G: 5,800 SF



CARSON PATTEN, CCIM

Vice President, Retail Advisor
Direct: 517 319-9230
carson.patten@martincommercial.com

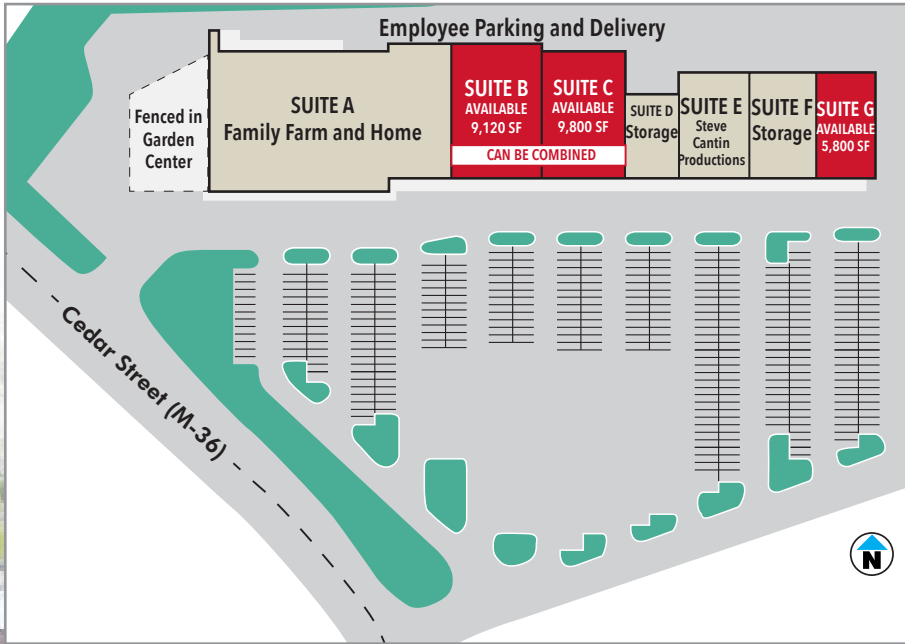
SAMANTHA LE

Senior Associate, Retail Advisor
Direct: 517 319-9279
samantha.le@martincommercial.com



1111 Michigan Ave., Ste 300
East Lansing, MI 48823
martincommercial.com

AVAILABLE SPACE



Retail/Service Space in Mason Plaza

Mason Plaza is a 72,000 SF strip center located in the community of Mason, positioned between the historic downtown and US-127. The available suites feature floor-to-ceiling windows and can be customized to meet tenant needs. Anchored by Family Farm and Home and Family Dollar, the center offers prominent signage, ample free parking, and convenient access to Cedar Street.

Mason is a primarily agricultural community and home to Dart Container, the world's largest manufacturer of food service containers. The site is less than one mile from US-127 and downtown Mason, including the County Courthouse, making it an ideal location for retail or service businesses seeking visibility and accessibility.

LEASE RATE:

\$6-8.00

PSF/YR NNN

EXPENSES ESTIMATED AT \$2.00 PSF/YR

PROPERTY INFORMATION

AVAILABLE:
 Suite B: 9,120 SF (Available 8/1/26)
 Suite C: 9,800 SF
 Suite G: 5,800 SF

PARKING:
 Generous Sized Surface Parking Lot

SIGNAGE:
 Pylon & Building Options

LOCATED:
 Between US-127 and Downtown Mason

SITE: Ingress/Egress From Two Entry Points Off Cedar St

GRADE LEVEL:
 Ovhd. Doors on Each Suite

© 2026 MARTIN COMMERCIAL PROPERTIES, INC. ALL RIGHTS RESERVED. THIS INFORMATION HAS BEEN OBTAINED FROM SOURCES BELIEVED RELIABLE BUT HAS NOT BEEN VERIFIED FOR ACCURACY OR COMPLETENESS. YOU SHOULD CONDUCT A CAREFUL, INDEPENDENT INVESTIGATION OF THE PROPERTY AND VERIFY ALL INFORMATION. ANY RELIANCE ON THIS INFORMATION IS SOLELY AT YOUR OWN RISK. MARTIN COMMERCIAL PROPERTIES AND THE MARTIN LOGO ARE SERVICE MARKS OF MARTIN COMMERCIAL PROPERTIES, INC. ALL OTHER MARKS DISPLAYED ON THIS DOCUMENT ARE THE PROPERTY OF THEIR RESPECTIVE OWNERS. PHOTOS HEREIN ARE THE PROPERTY OF THEIR RESPECTIVE OWNERS. USE OF THESE IMAGES WITHOUT THE EXPRESS WRITTEN CONSENT OF THE OWNER IS PROHIBITED.

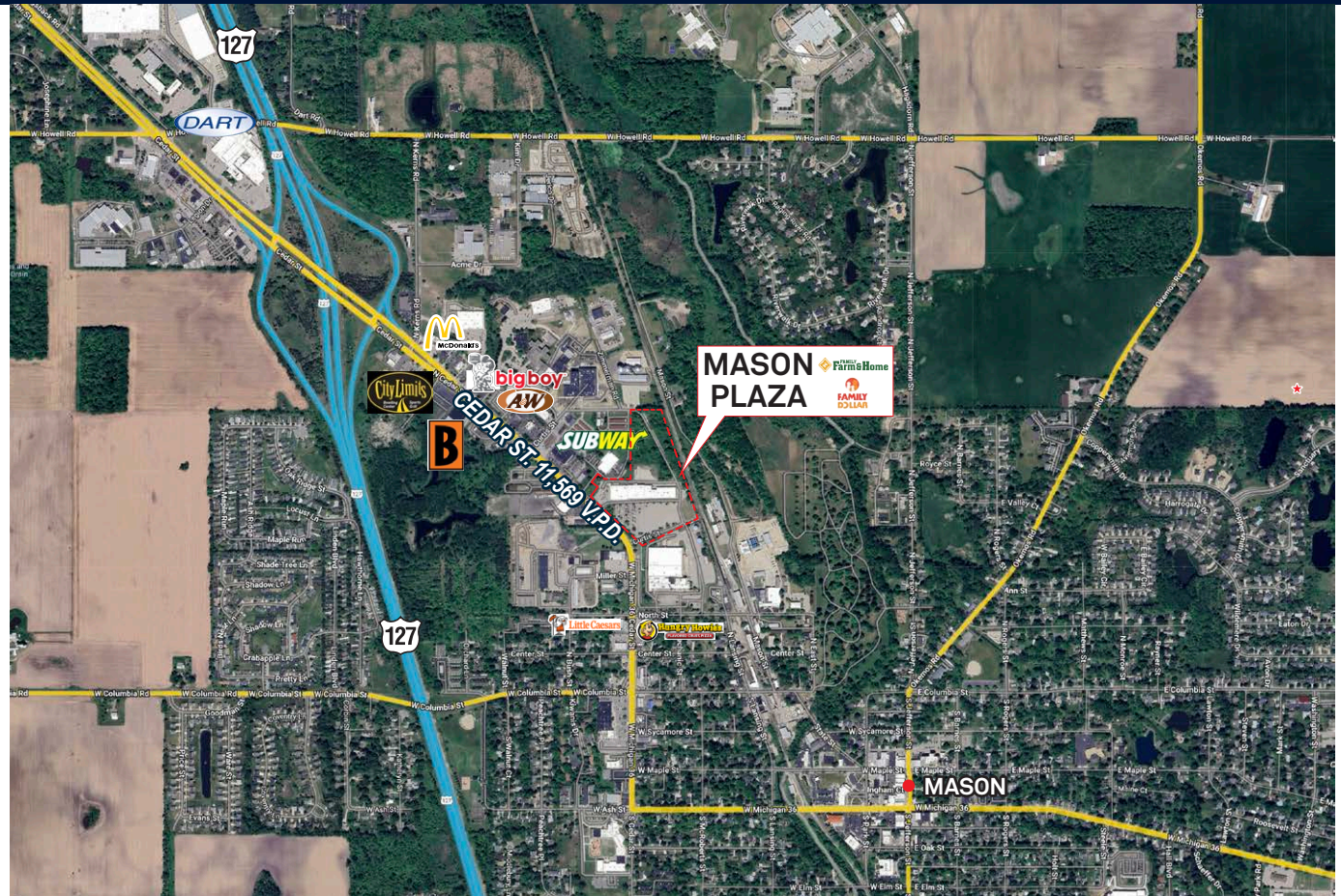
AREA INFORMATION

0.7 Miles
to US-127

1 Mile
to Mason and Ingham County
Courthouse

<15 Minutes
to the communities of Holt, Dansville
and Leslie

Convenient
to Big Boy, McDonald's, Arby's, Taco
Bell, Subway, A&W, Little Caesar's,
Hungry Howie's Pizza, and more!



DEMOGRAPHICS

Proximity	1-Mile	3-Mile	5-Mile
Population	5,856	11,187	23,811
Households	2,434	4,569	9,523
Labor Force	4,825	9,153	19,342

