

OFFICE SUITES FOR LEASE

SUITE 205
1729 SF
AVAILABLE NOW
\$18.50 PSF



8826 SANTA FE DRIVE STE 205 OVERLAND PARK, KS



\$18.50/SF



BOARDROOM

Property Highlights

- Move in ready suites available
- Updated common areas
- On-site management
- Access to shared boardroom
- In close proximity to downtown Overland Park

JACK SCHREIBER
913.320.3001
JSchreiber@prismres.com

A circular profile picture of Jack Schreiber, a man with short brown hair and a beard, wearing a dark shirt. The background of the profile picture is a light-colored geometric pattern.

8826 SANTA FE DRIVE STE 205 OVERLAND PARK, KS

Property Highlights

Open concept

Sink available in suite

tenant improvements
available



JACK SCHREIBER

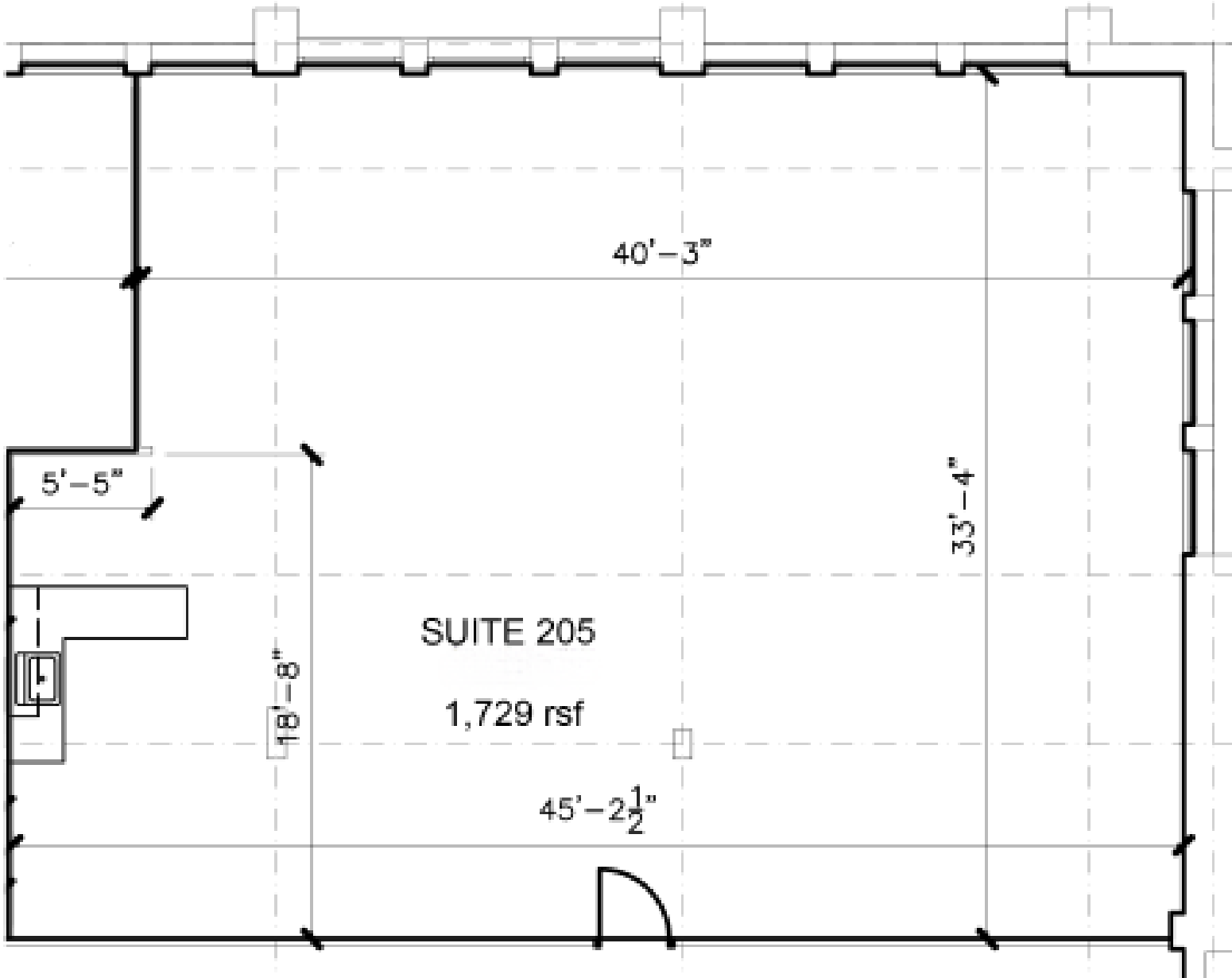
📞 913.320.3001

✉️ JSchreiber@prismres.com

8826 SANTA FE DR. STE 205

2nd Floor

1729 SF



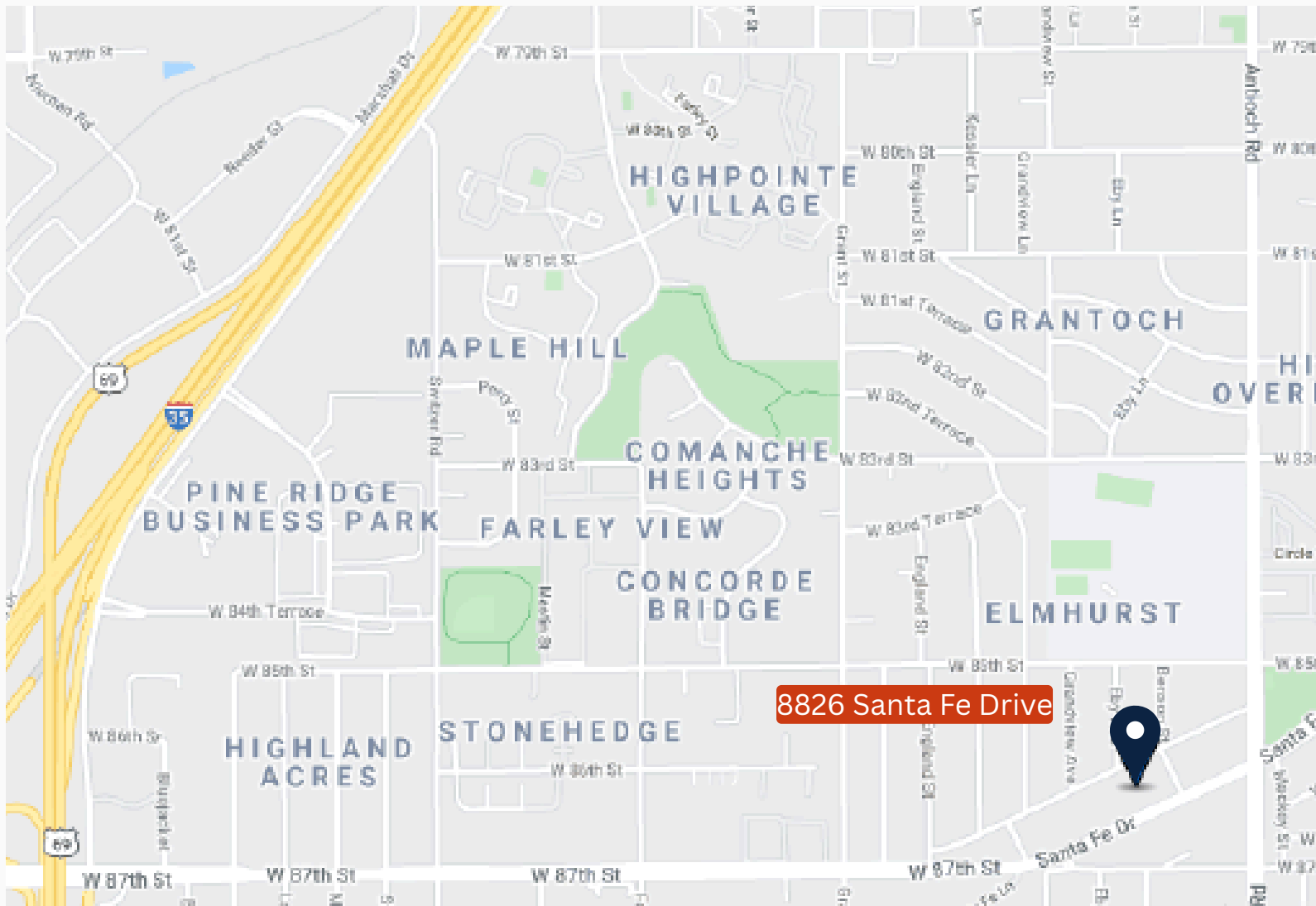
JACK SCHREIBER

913.320.3001

JSchreiber@prismres.com

FLOORPLAN STE 205

8826 SANTA FE DRIVE OVERLAND PARK, KS



JACK SCHREIBER

📞 913.320.3001

✉️ JSchreiber@prismres.com

LOCATION 8826 SANTA FE DRIVE