



## Corner Lot Center

1000 Riverside Avenue  
Jacksonville, Florida 32204

### Property Highlights

- 9-story professional office building in the heart of historic Riverside and the 5 points district with easy access to I-95 & 10.
- Incredible views of the beautiful St. Johns River just across the street.
- Upscale building finishes and ample parking.
- Within walking distance to the best restaurants, shops, & parks.
- Conveniently located near grocery stores, medical offices, and hospitals.
- Cummer Museum and Garden Club is just across the street from the building.
- Home of River and Post restaurant and roof top bar.

Spaces	Lease Rate	Space Size
210	\$26.00 SF/yr	729 SF
250	\$26.00 SF/yr	446 SF
270	\$26.00 SF/yr	1,618 SF
310	\$725 per month	275 SF
314	\$26.00 SF/yr	1,221 SF

### For More Information



#### Patrick Carney

Vice President, Office Specialist  
O: 904 404 4456  
pc@naihallmark.com



#### Sydney Miles

Associate  
O: 904 404 5566  
sm@naihallmark.com





For Lease  
275 - 1,618 SF  
Office Space



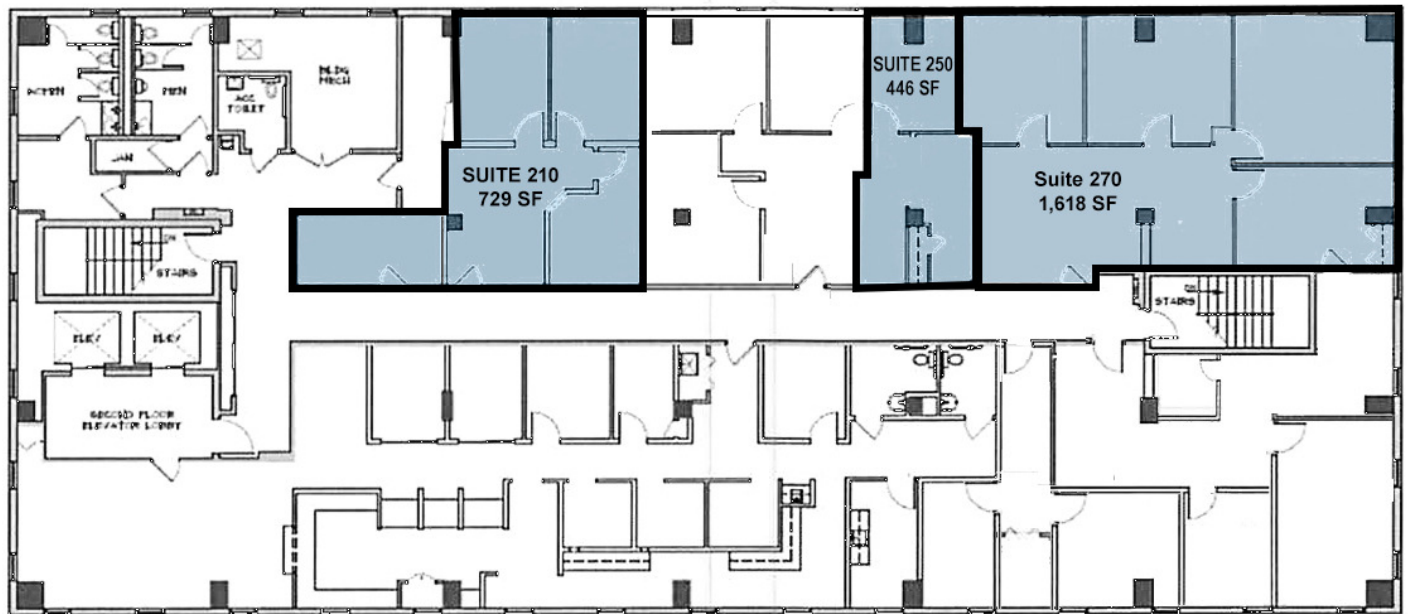
**BROCHURE** | Corner Lot Center 1000 Riverside Avenue Jacksonville, FL 32204

No warranty or representation, express or implied, is made as to the accuracy of the information contained herein, and the same is submitted subject to errors, omissions, change of price, rental or other conditions, prior sale, lease or financing, or withdrawal without notice, and of any special listing conditions imposed by our principals no warranties or representations are made as to the condition of the property or any hazards contained therein are any to be implied.





For Lease  
275 - 1,618 SF  
Office Space



**BROCHURE** | Corner Lot Center 1000 Riverside Avenue Jacksonville, FL 32204

No warranty or representation, express or implied, is made as to the accuracy of the information contained herein, and the same is submitted subject to errors, omissions, change of price, rental or other conditions, prior sale, lease or financing, or withdrawal without notice, and of any special listing conditions imposed by our principals no warranties or representations are made as to the condition of the property or any hazards contained therein are any to be implied.

