

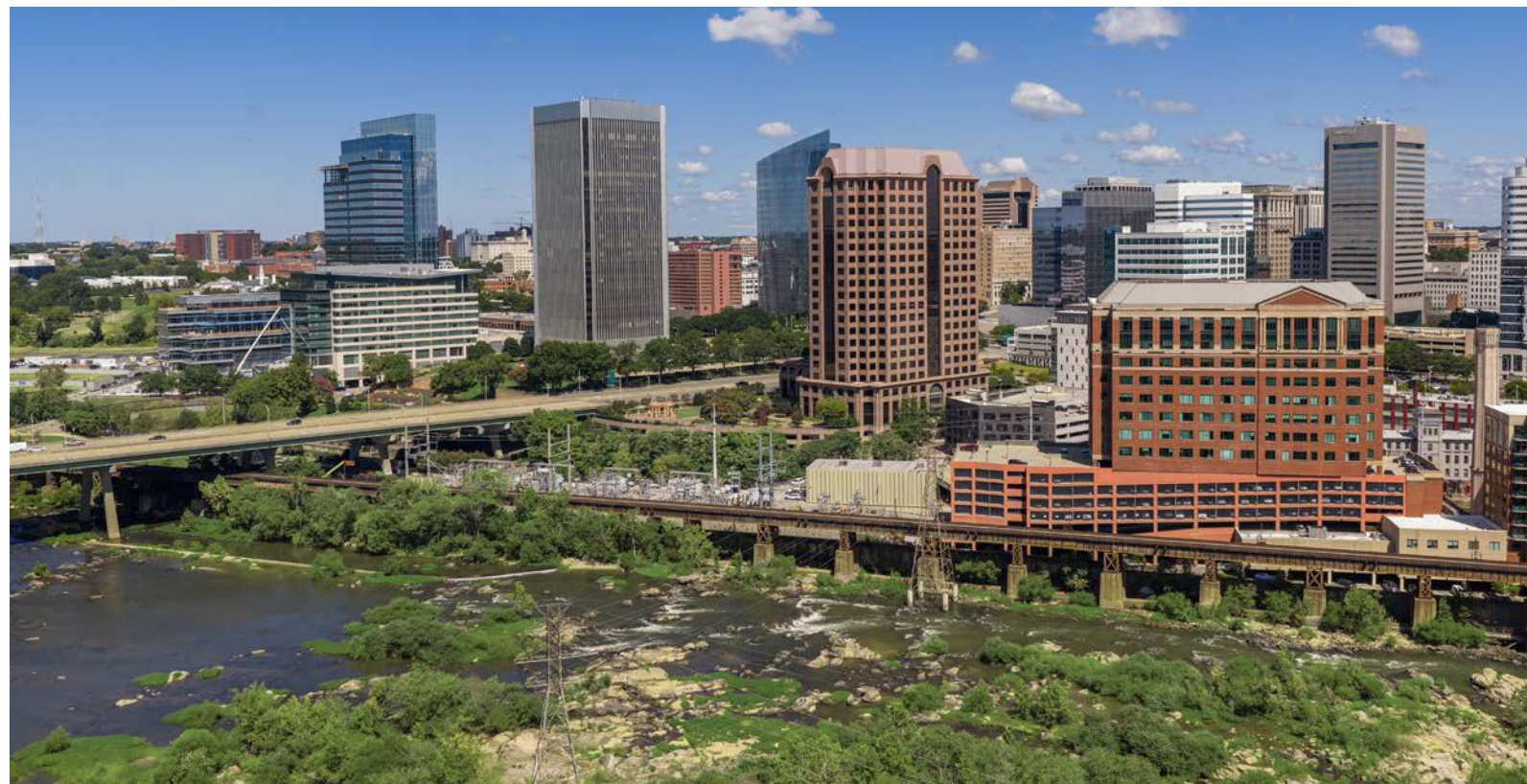


RIVERFRONT PLAZA



Welcome to RIVERFRONT PLAZA

Riverfront Plaza is Downtown Richmond's most prestigious office destination, featuring two iconic 20-story Class A towers with unparalleled James River views and nearly one million square feet of premium space. Located in the heart of the Central Business District with superior highway access, this award-winning development offers regal finishes, extensive amenities, and convenient access to downtown attractions, setting the gold standard for Richmond office real estate.



Excellence in Every Detail

INSIDE & OUT



Fitness center featuring state-of-the-art equipment and locker rooms



Fully equipped conference facility with 65-person capacity



On-site grab-and-go market with snacks, drinks and fresh food offerings



Food trucks on-site Monday – Friday



Available ground floor retail space – ideal for café or quick service restaurant



Covered parking with the highest parking ratio in downtown Richmond



Outdoor green space & patio available for tenant use



Stunning atrium lobby connecting buildings

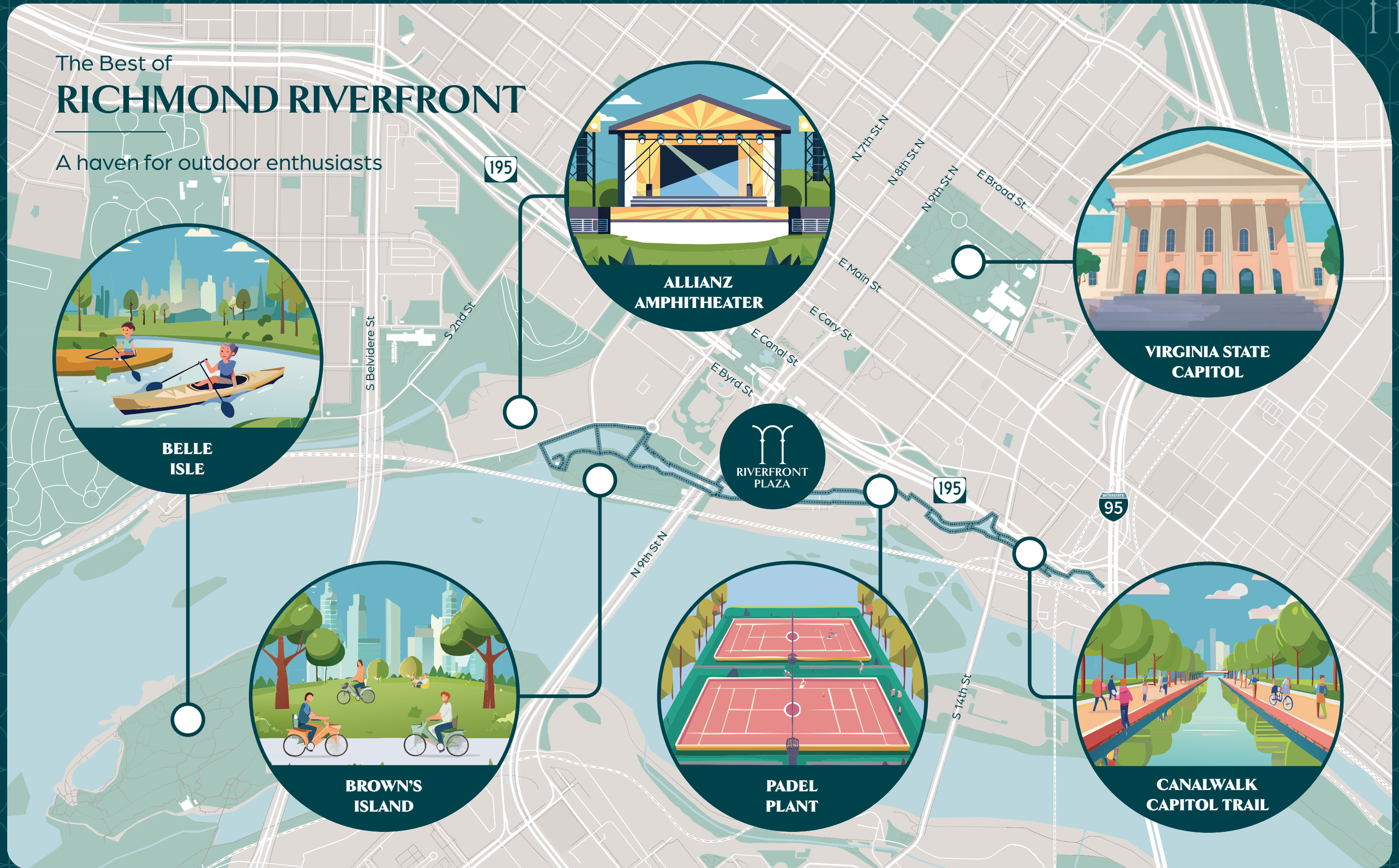
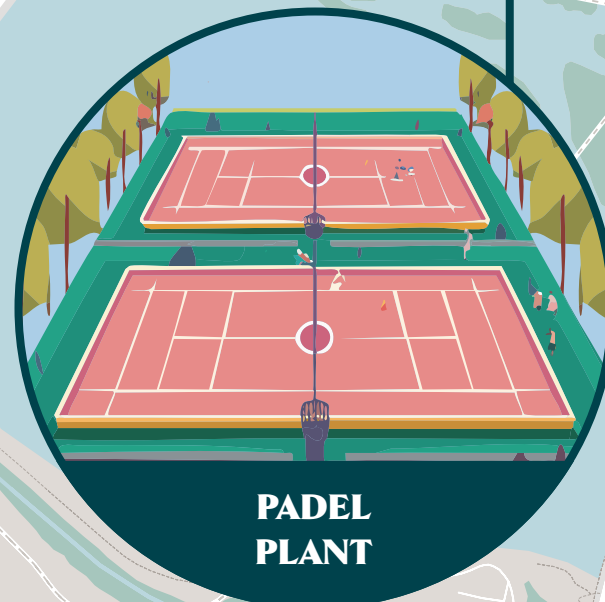


Auditorium space available for tenant use



The Best of RICHMOND RIVERFRONT

A haven for outdoor enthusiasts



An Abundance of AMENITIES

Restaurants

1. Nami Japanese Restaurant
2. Cafe Rustika
3. Penny Lane Pub
4. The Foundation
5. Kabuto Jr Hibachi House
6. Richmond Live
7. Buttermilk and Honey on Grace
8. 521 Biscuits & Waffles
9. Chicano's Cocina Bar & Grill
10. Hotel Greene
11. Secret Sandwich Society
12. BrickFire Wood Oven
13. Capital Ale House
14. Spice of India
15. KAT'S Breakfast & Lunch
16. Sefton Coffee Company
17. Subway
18. Potbelly
19. Charlotte's Southern Deli
20. Chopt Creative Salad Co.
21. Rueger's
22. Casa Del Barco - Canal Walk
23. The Pit and The Peel
24. Chick-fil-A
25. Capitol Waffle Shop
26. The Tobacco Company Restaurant
27. Chefs Kitchen
28. Native Plate
29. Soul Taco - Shockoe Slip
30. The Urban Farmhouse Market & Café
31. Siné Irish Pub
32. Southern Railway Taphouse
33. Europa Crust

Hotels

1. Holiday Inn Express Richmond - Downtown
2. Moxy Richmond Downtown
3. Delta Hotels Richmond Downtown
4. Hampton Inn & Suites Richmond - Downtown
5. The Commonwealth
6. Omni Richmond Hotel
7. The Berkeley Hotel
8. Courtyard by Marriott Richmond Downtown



AVAILABILITIES



WEST BUILDING

FLOOR 18
Suite 1810 – 14,028 SF

FLOOR 17
Full Floor – 22,970 SF

FLOOR 16
Suite 1650 – 10,287 SF

FLOOR 14
Full Floor – 22,970 SF

FLOOR 11
Suite 1105 – 9,528 SF
Suite 1110 – 1,704 SF
Suite 1150 – 1,546 SF

FLOOR 10
Suite 1000 – 9,052 SF

FLOOR 8
Suite 810 – 7,326 SF
Suite 820 – 5,944 SF

FLOOR 6
Full Floor – 22,969 SF

FLOOR 5
Full Floor – 22,969 SF

FLOOR 4
Full Floor – 22,969 SF

FLOOR 3
Full Floor – 31,176 SF

FLOOR 2
Full Floor – 30,435 SF

FLOOR 1
Suite 103 – 909 SF
Suite 110 – 1,440 SF
Suite 190 – 3,164 SF

EAST BUILDING

FLOOR 5
Suite 525 – 1,188 SF

FLOOR 3
Full Floor – 23,712 SF

FLOOR 1
Suite 100 – 8,046 SF (cafe space)
Suite 110 – 1,011 SF

WEST TOWER



AVAILABILITIES

West Tower – 901 E Byrd St

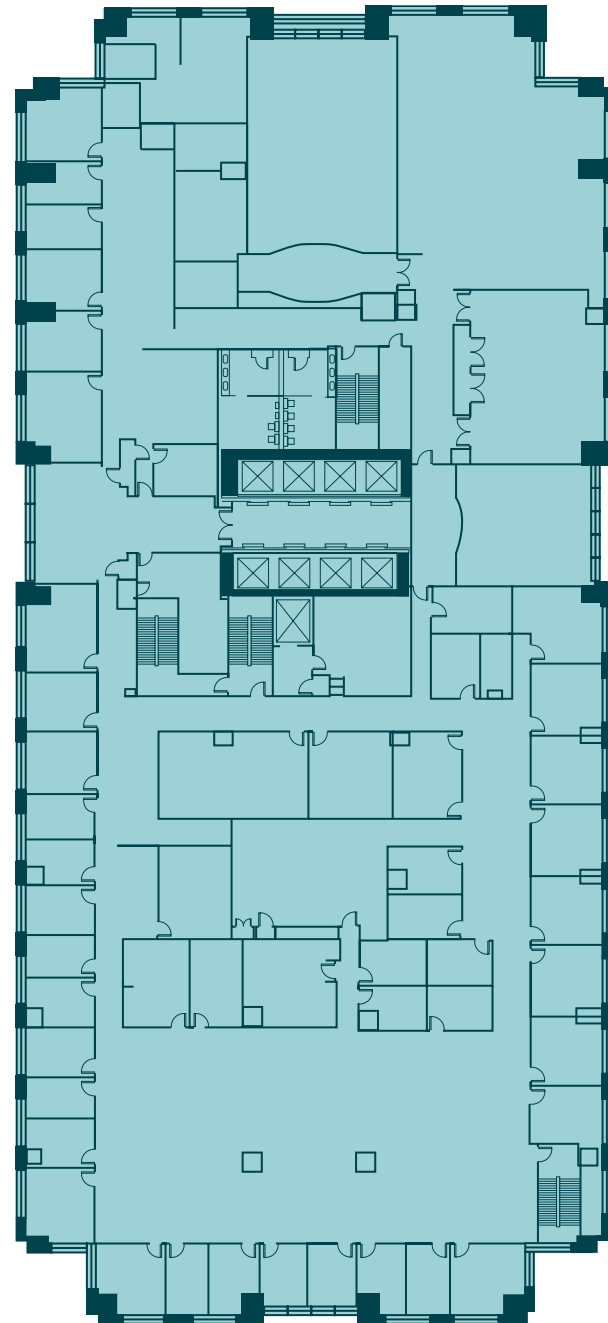


FLOOR 1

Suite 103 – 909 SF Suite 110 – 1,440 SF Suite 190 – 3,164 SF

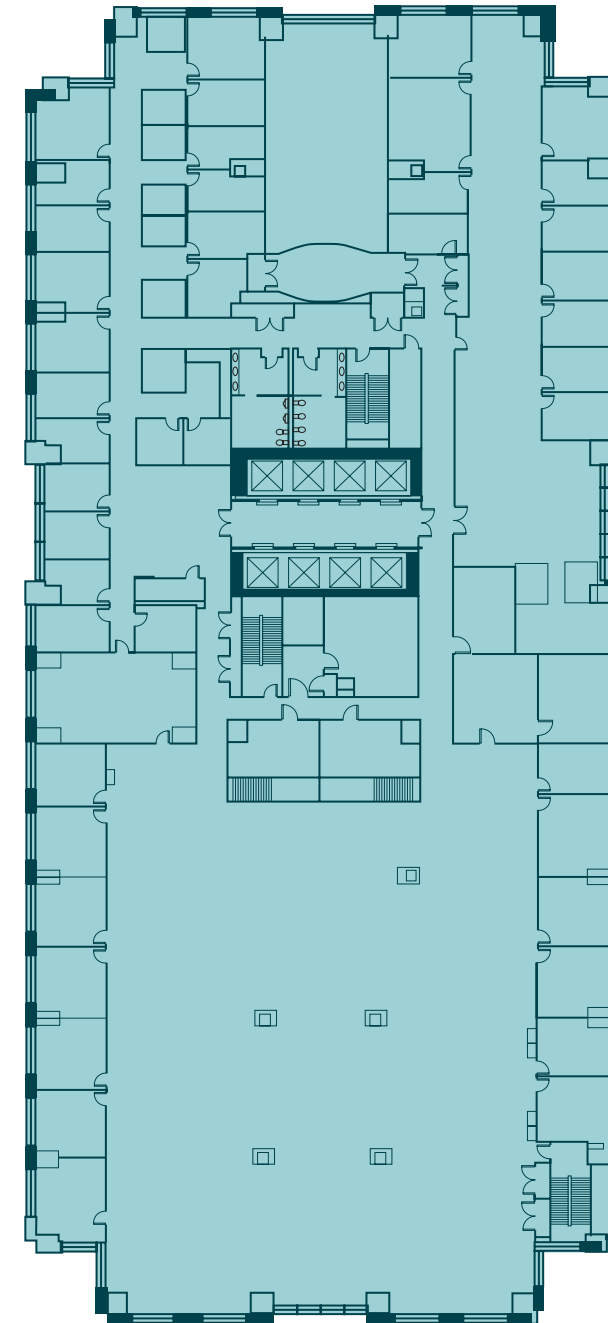
AVAILABILITIES

West Tower – 901 E Byrd St



FLOOR 2

Full Floor – 30,435 SF

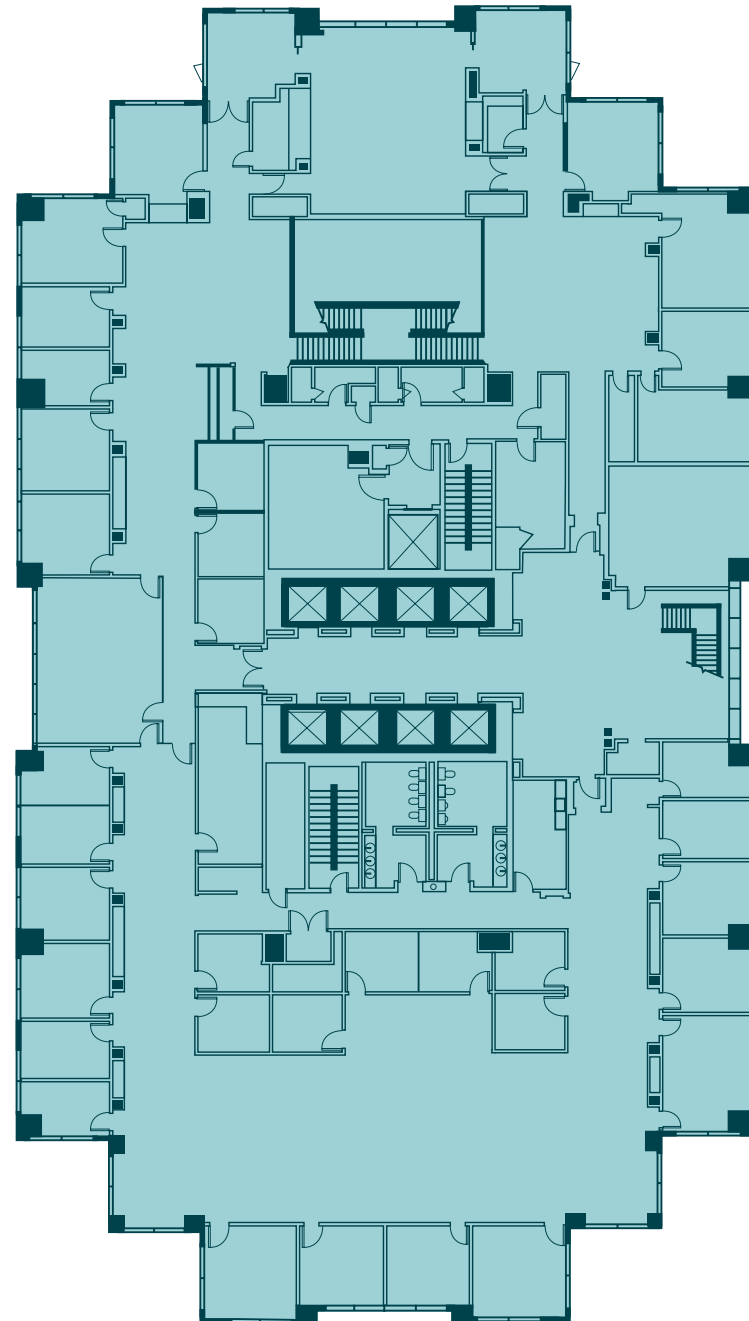


FLOOR 3

Full Floor – 31,176 SF

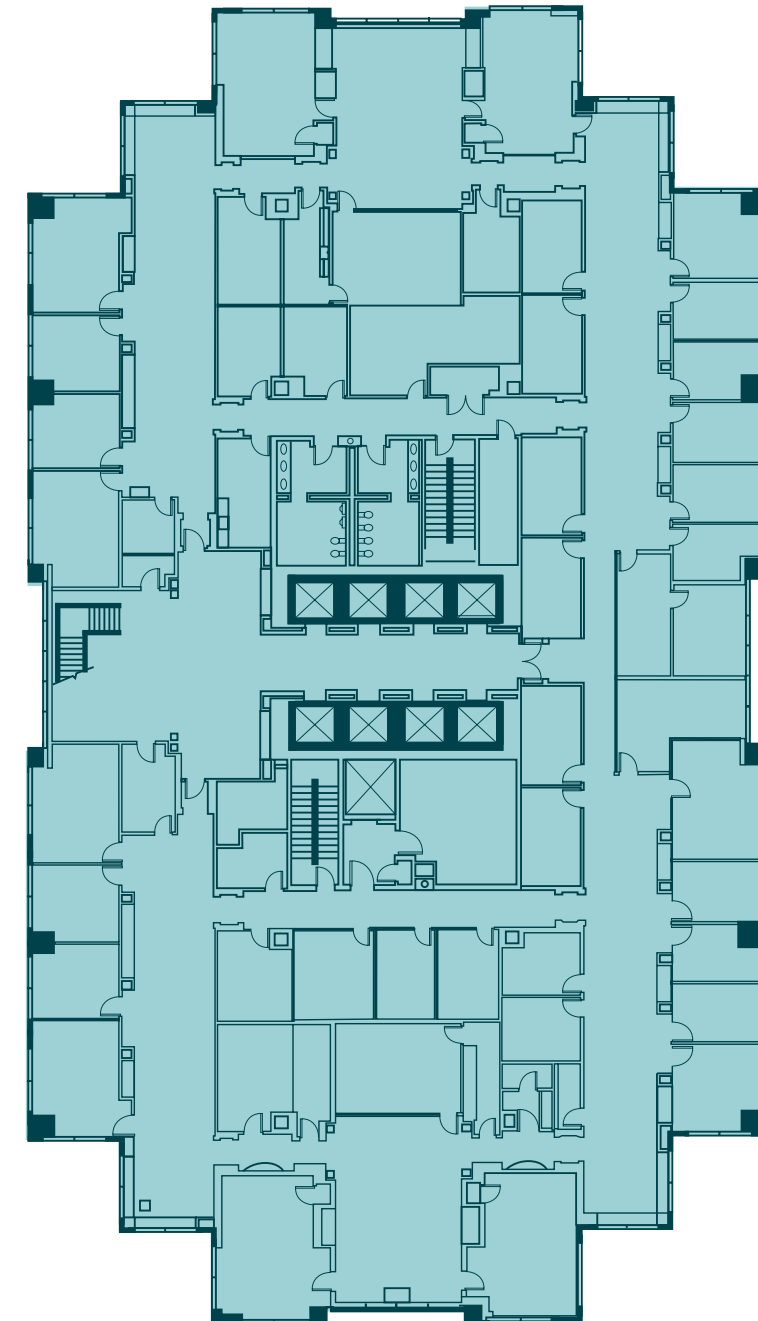
AVAILABILITIES

West Tower – 901 E Byrd St



FLOOR 4

Full Floor – 22,969 SF

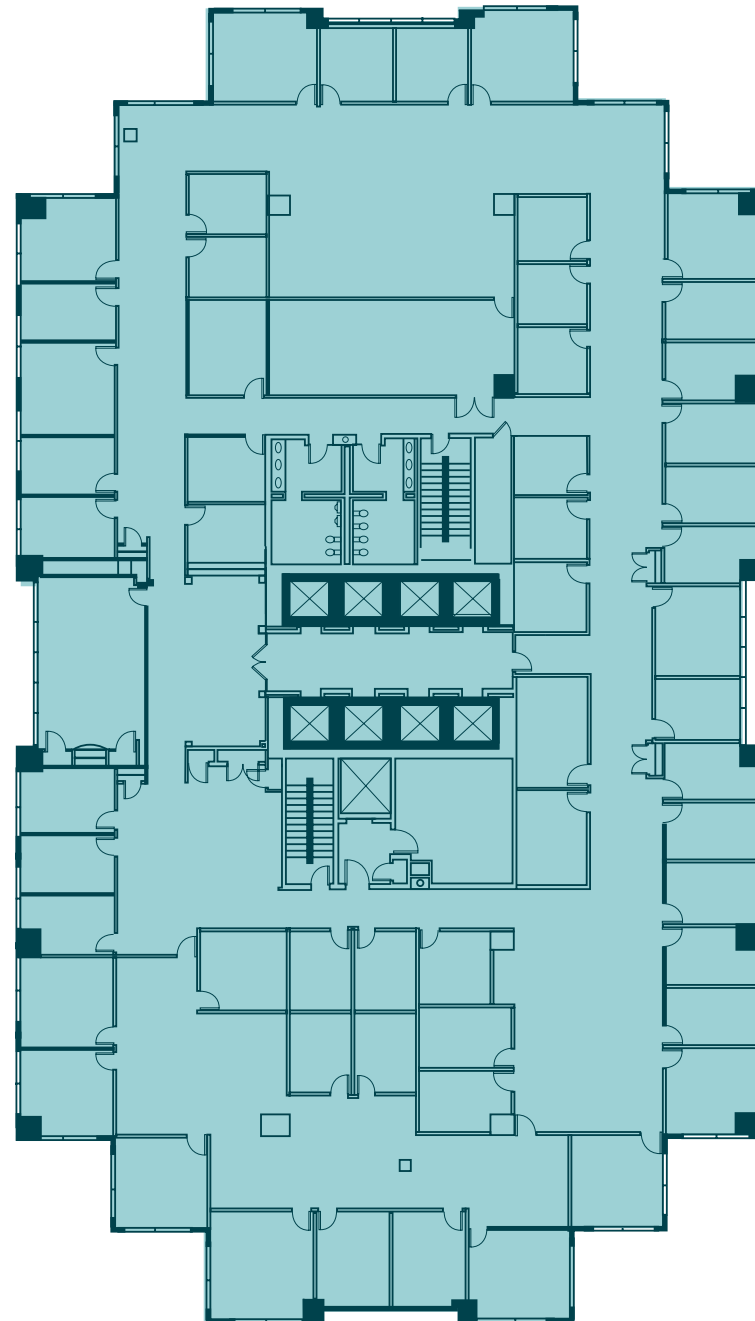


FLOOR 5

Full Floor – 22,969 SF

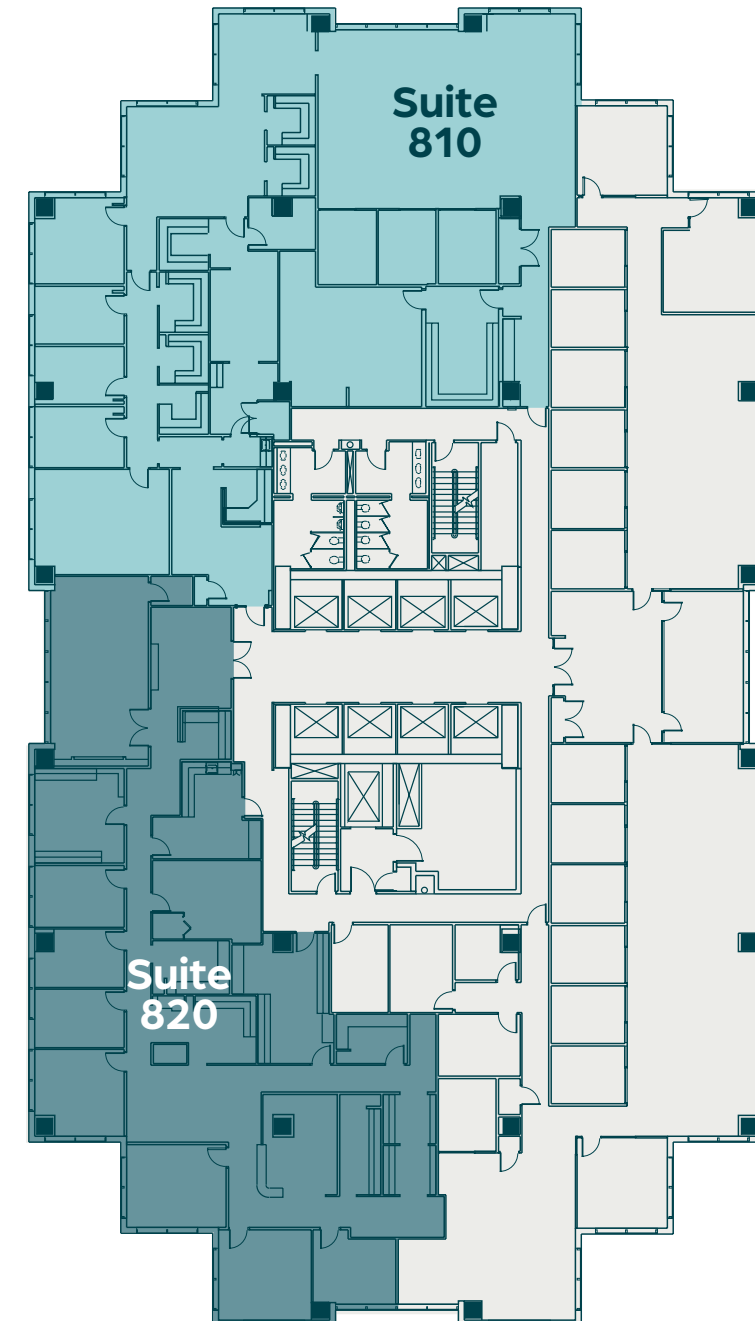
AVAILABILITIES

West Tower – 901 E Byrd St



FLOOR 6

Full Floor – 22,969 SF

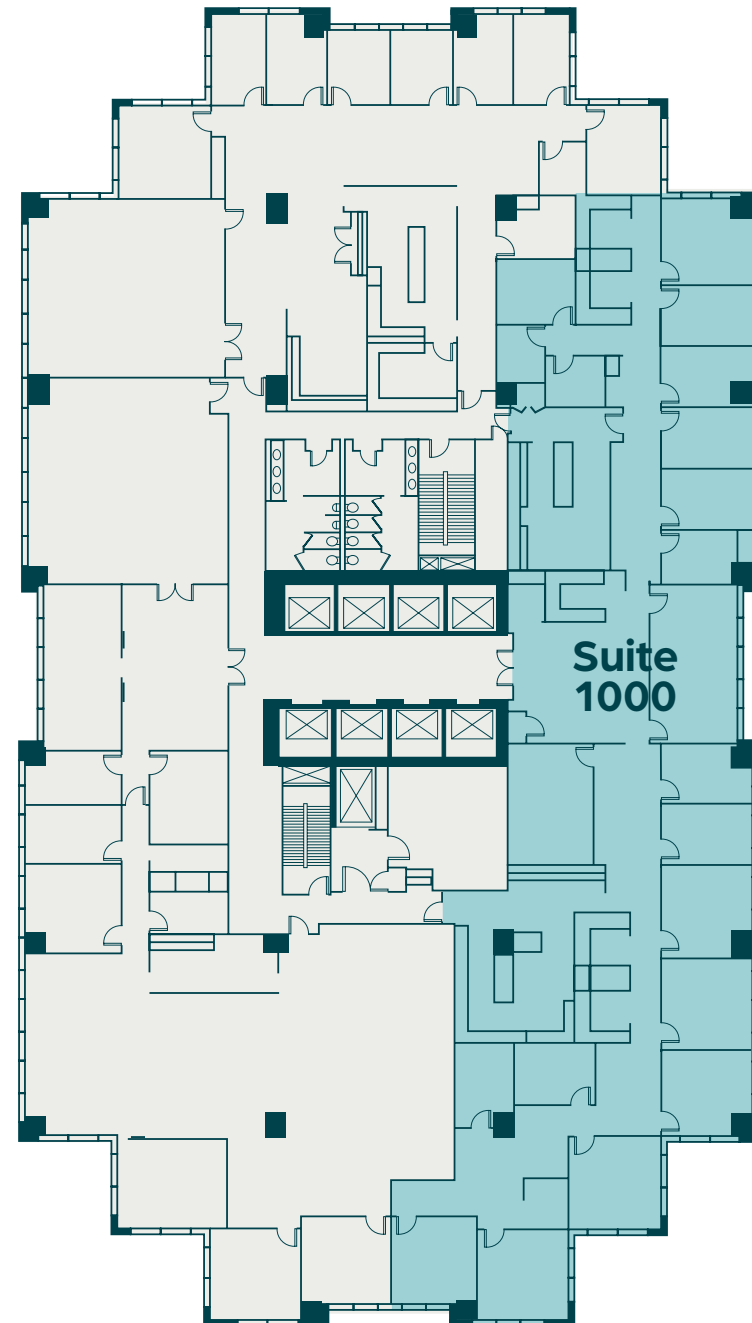


FLOOR 8

Suite 810 – 7,326 SF Suite 820 – 5,944 SF

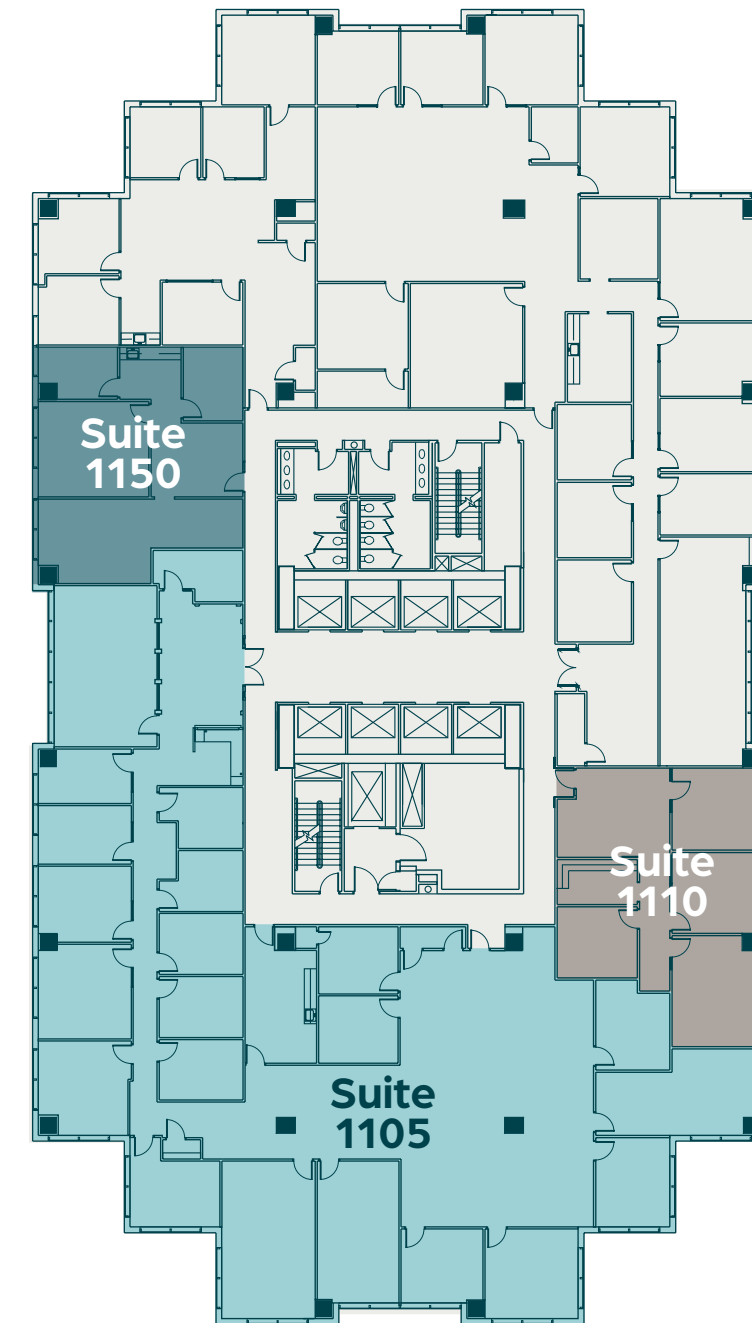
AVAILABILITIES

West Tower – 901 E Byrd St



FLOOR 10

Suite 1000 – 9,052 SF



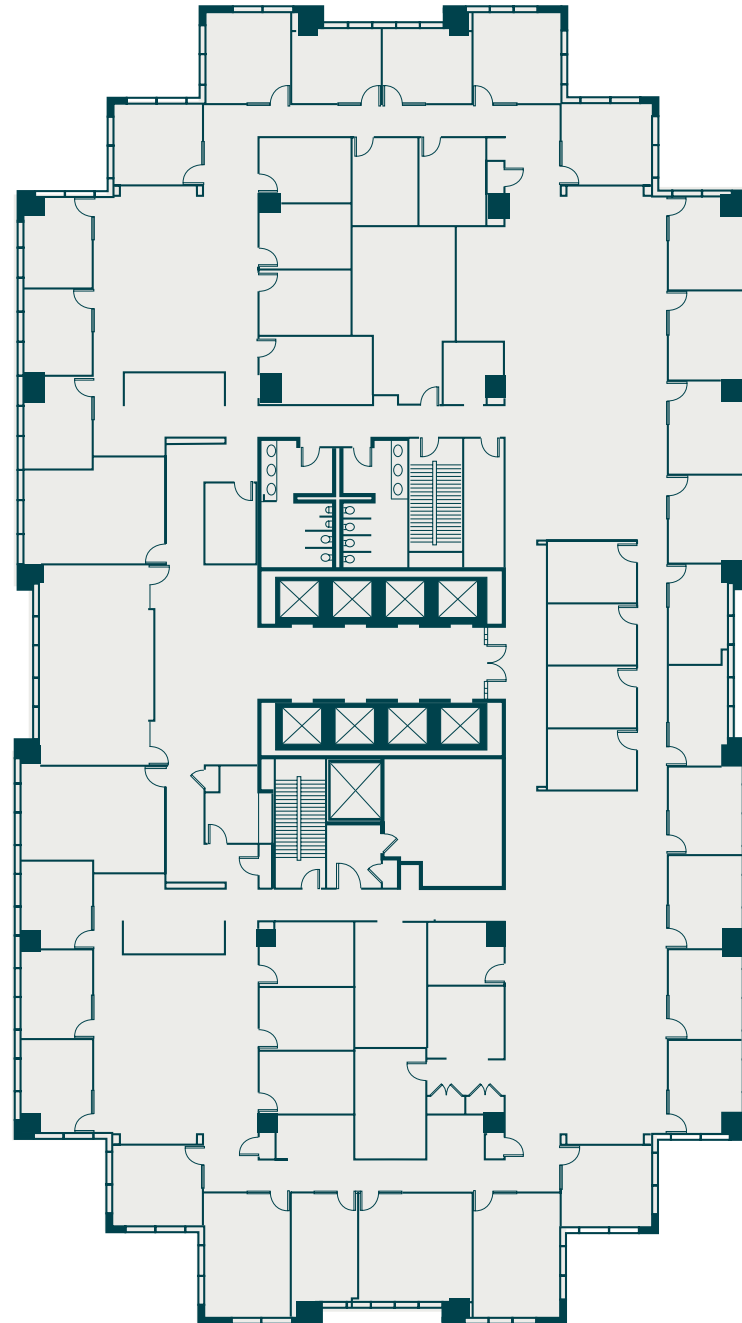
FLOOR 11

Suite 1105 – 9,528 SF Suite 1110 – 1,704 SF Suite 1150 – 1,546 SF

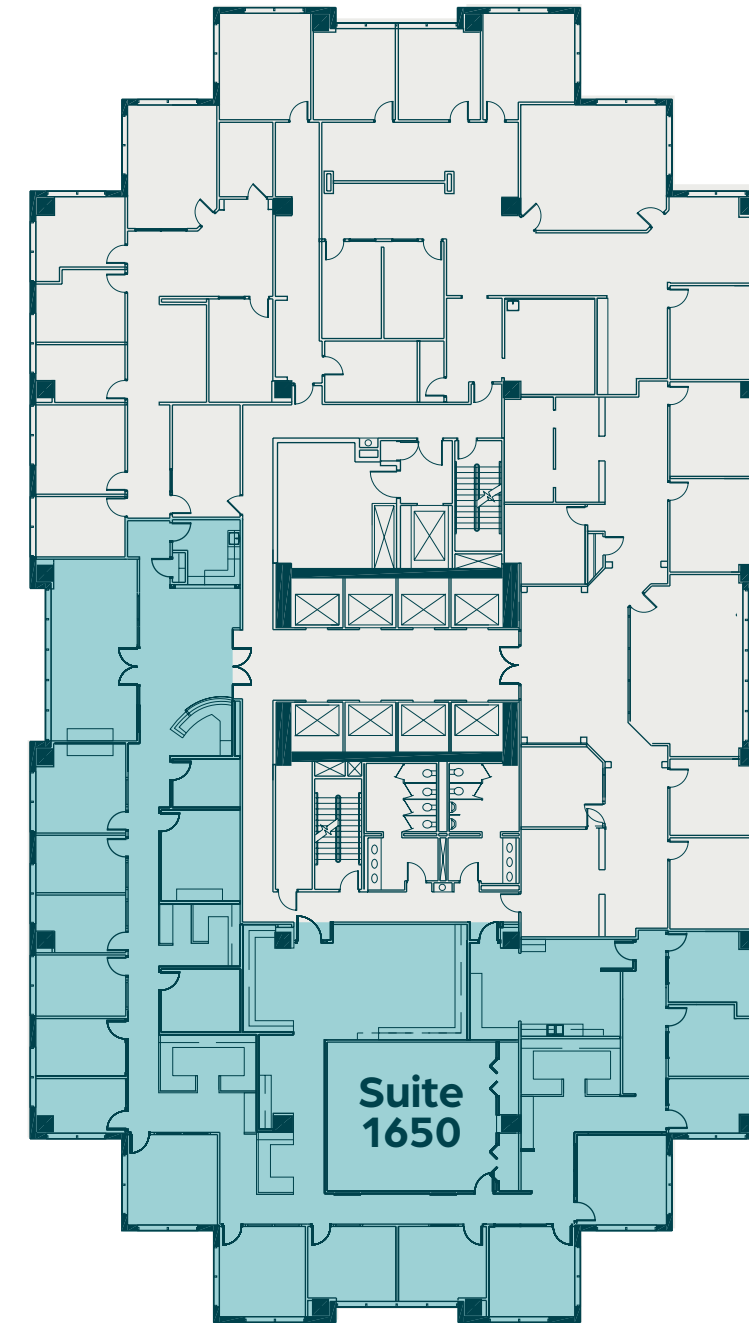


AVAILABILITIES

West Tower – 901 E Byrd St



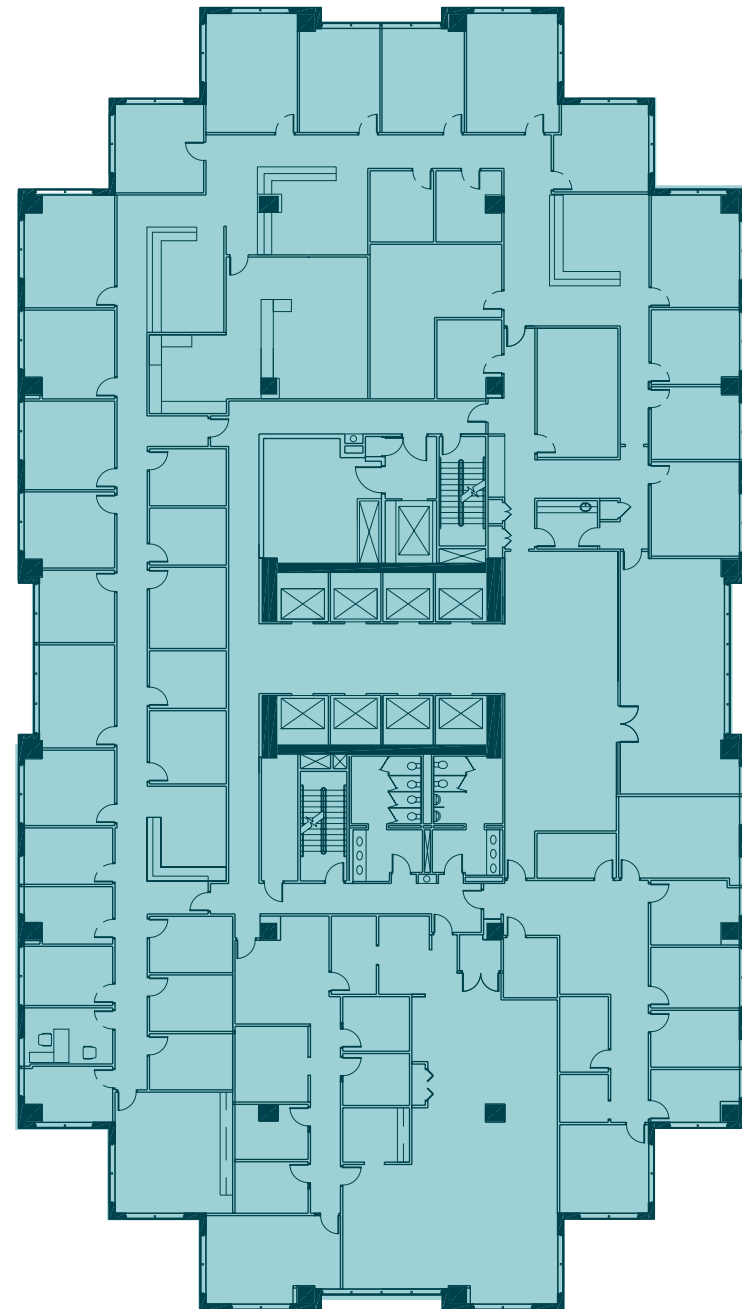
FLOOR 14
Full Floor – 22,970 SF



FLOOR 16
Suite 1650 – 10,287 SF

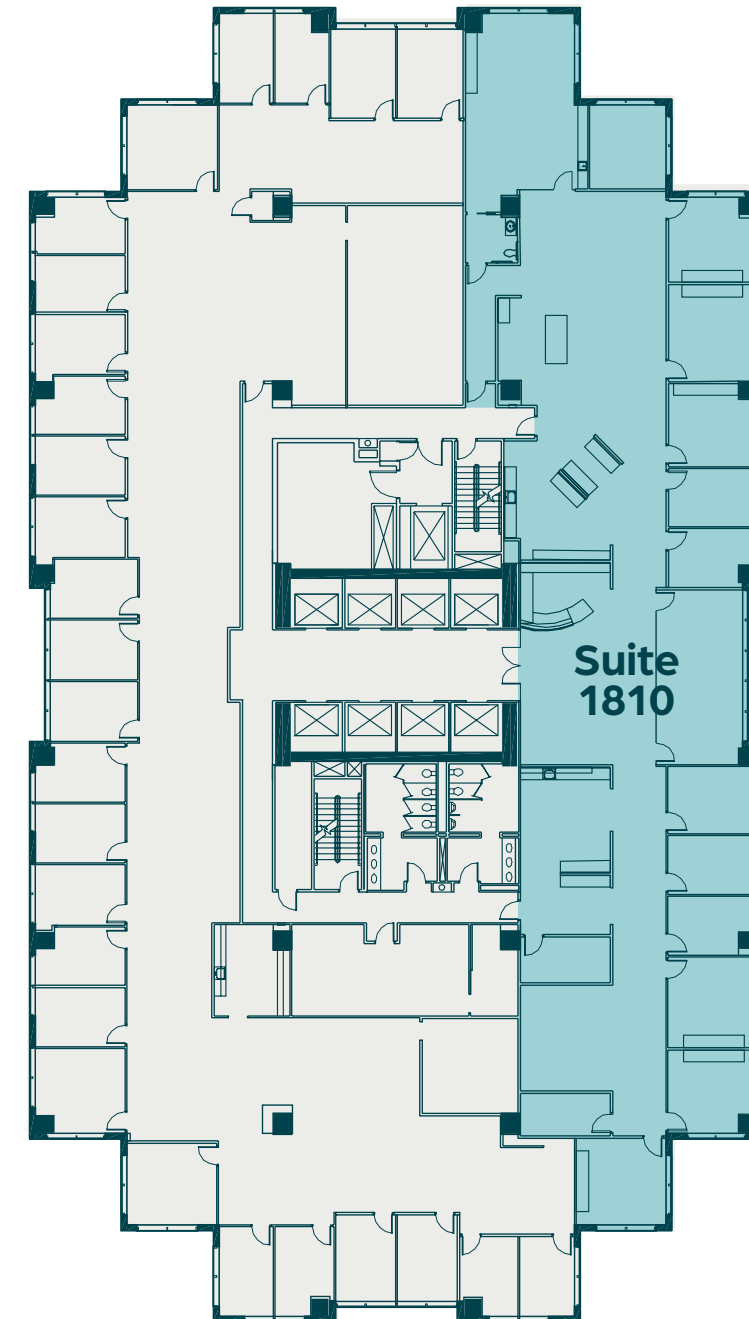
AVAILABILITIES

West Tower – 901 E Byrd St



FLOOR 17

Full Floor – 22,970 SF



FLOOR 18

Suite 1810 – 14,028 SF

AVAILABILITIES

East Tower – 951 E Byrd St



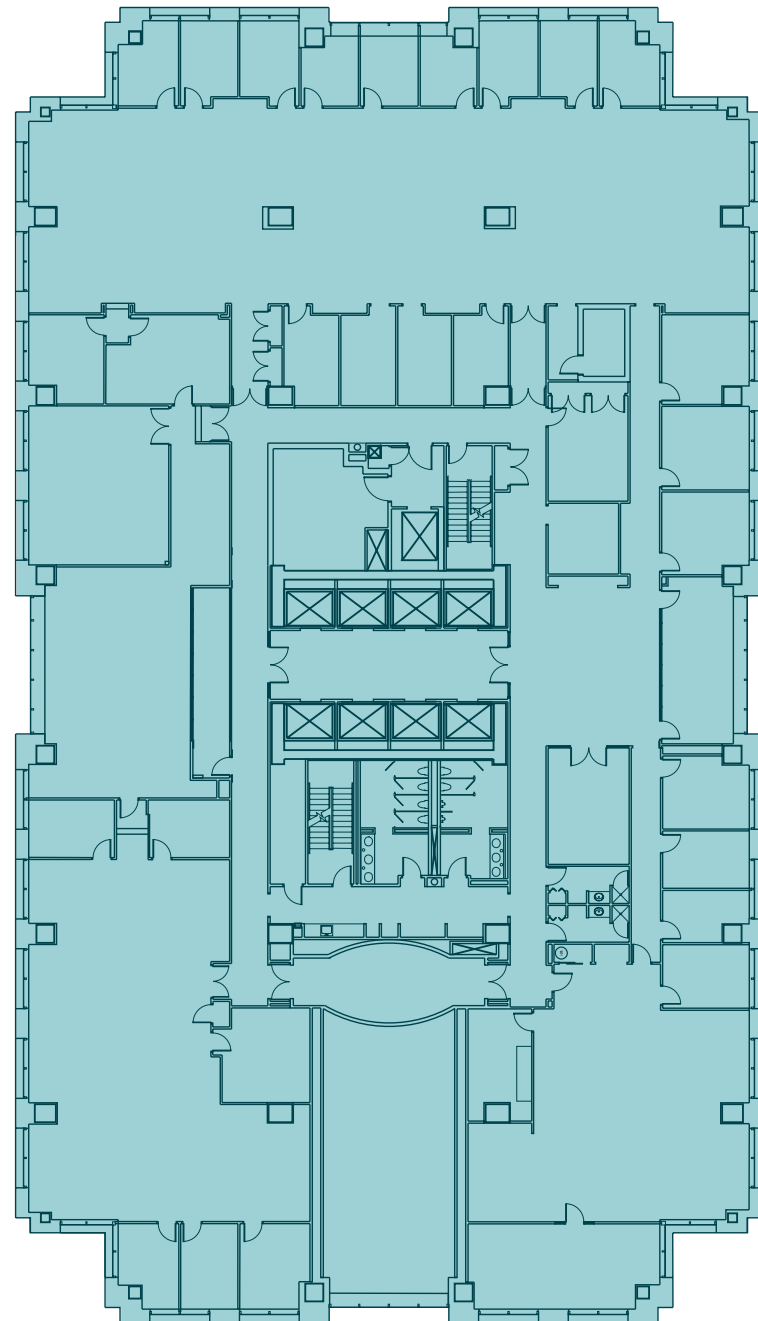
FLOOR 1

Suite 100 – 8,046 SF Suite 110 – 1,011 SF Suite 120 – 1,834 SF

← GARAGE ELEVATORS
EAST TOWER

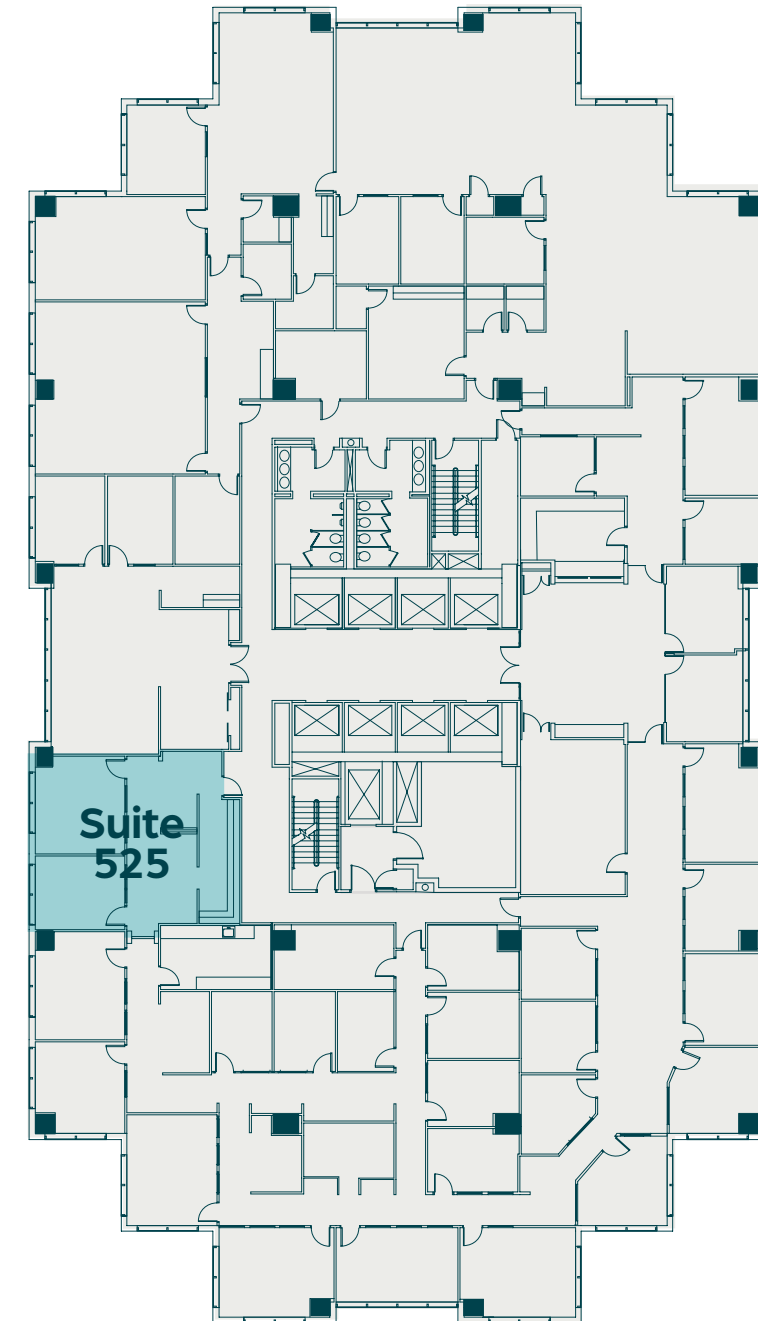
AVAILABILITIES

East Tower – 951 E Byrd St



FLOOR 3

Full Floor – 23,713 SF



FLOOR 5

Suite 525 – 1,188 SF



RIVERFRONT PLAZA



For leasing information,
PLEASE CONTACT:

CHARLIE POLK
+1 804 405 8007
Charlie.Polk@jll.com

JIMMY APPICH
+1 804 928 5599
Jimmy.appich@jll.com

GARETH JONES
+1 804 514 8171
GarethO.Jones@jll.com

KAYLIN FARRUGGIO
+1 757 715 0656
Kaylin.Farruggio@jll.com



Although information has been obtained from sources deemed reliable, neither Owner nor JLL makes any guarantees, warranties or representations, express or implied, as to the completeness or accuracy as to the information contained herein. Any projections, opinions, assumptions or estimates used are for example only. There may be differences between projected and actual results, and those differences may be material. The Property may be withdrawn without notice. Neither Owner nor JLL accepts any liability for any loss or damage suffered by any party resulting from reliance on this information. If the recipient of this information has signed a confidentiality agreement regarding this matter, this information is subject to the terms of that agreement. ©2025 Jones Lang LaSalle IP, Inc. All rights reserved. Portions of this work product were created with generative AI.