



Keegan & Coppin
COMPANY, INC.

FOR LEASE

1682 NOVATO BOULEVARD
NOVATO, CA

Baywood Center
Office Space for Lease



REPRESENTED BY:

NATHAN BALLARD, PARTNER
LIC # 01743417 (415) 461-1010, EXT 116
NBALLARD@KEEGANCOPPIN.COM

MATT STORMS, PARTNER
LIC # 01233478 (415) 461-1010, EXT 123
MSTORMS@KEEGANCOPPIN.COM



OFFICE SPACE FOR LEASE



1682 NOVATO BLVD
NOVATO, CA

**BAYWOOD CENTER
OFFICE SPACE**

PROPERTY INFORMATION

HIGHLIGHTS

- Abundant Parking
- Flexible Floorplans
- Elevator Served
- Generous Window Line
- Excellent Location
- Close to Many Amenities

OFFICE SPACE

Suite 152: 1,400+/- sq ft

Suite 203: 1,248+/- sq ft

Suite 205: 1,232+/- sq ft

***Suite 203 and Suite 205 can be leased together for a total of 2,480 sq ft**

Suite 252: 908+/- sq ft

Suite 340: 799+/- sq ft

DESCRIPTION

Five private offices, open work area, and kitchenette/breakroom. Creekside views.

Reception with two private offices. Views of the surrounding hills.

Open space with one private corner office. Creekside views.

Open space with one private office.

Two private offices, reception/open work area and kitchenette. Creekside views.

DESCRIPTION OF PREMISES

Located in a beautiful setting along Novato Creek, The Baywood Center is a three-story, first-class suburban office property that is well appointed to accommodate a variety of suite sizes. The bountiful glass line allows for copious natural light and beautiful views while the flexible floor plans can be appointed to accommodate a wide variety of businesses.

LEASE TERMS

Size

799 - 2,480+/- sq ft

Rate

\$1.95 per sq ft, Full Service

4% annual increases

Terms

3-5 year lease term

Parking

3:1,000

Total Building Size

32,510 sq ft

Keegan & Coppin Co., Inc.
101 Larkspur Landing Circle, Ste. 112
Larkspur, CA 94939
www.keegancoppin.com
(415) 461-1010

The above information, while not guaranteed, has been secured from sources we believe to be reliable. Submitted subject to error, change or withdrawal. An interested party should verify the status of the property and the information herein.

REPRESENTED BY:

NATHAN BALLARD, PARTNER
LIC # 01743417 (415) 461-1010, EXT 116
NBALLARD@KEEGANCOPPIN.COM

MATT STORMS, PARTNER
LIC # 01233478 (415) 461-1010, EXT 123
MSTORMS@KEEGANCOPPIN.COM



OFFICE SPACE FOR LEASE



1682 NOVATO BLVD
NOVATO, CA

BAYWOOD CENTER OFFICE SPACE

DESCRIPTION OF AREA

The Baywood Center is located at the corner of South Novato Boulevard and 7th Street immediately adjacent to Downtown Novato. With just over 3:1,000 parking spaces and near many public transportation options, The Baywood Center is both serene and convenient. The property is also located near many amenities including Safeway, Whole Foods, The SMART Train, and a variety of local shops and restaurants.

NEARBY AMENITIES

- Downtown Novato
- Whole Foods
- Safeway
- Novato Library
- Novato Community Hospital
- Vintage Oaks Shopping Center

TRANSPORTATION ACCESS



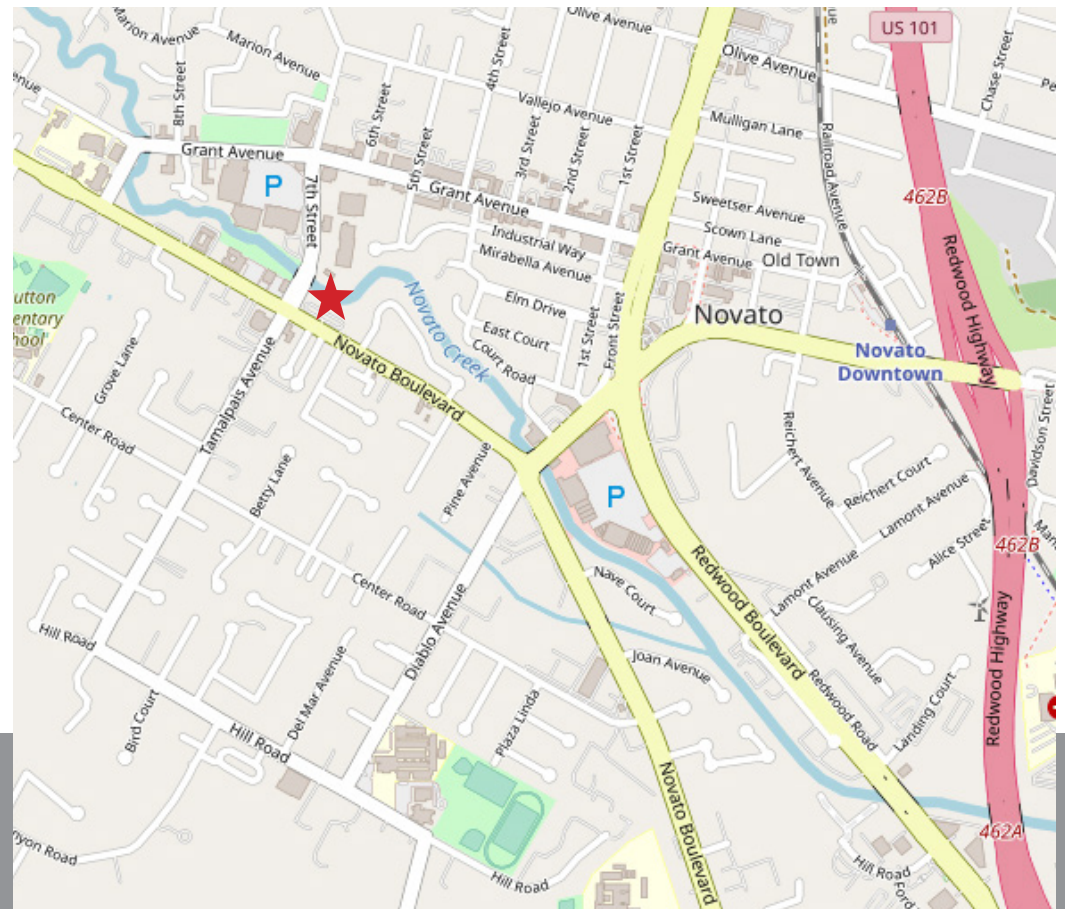
Highway 101 - 1 Mile



Novato SMART Train Station - 1 Mile



Highway 37 - 3 Miles



REPRESENTED BY:

NATHAN BALLARD, PARTNER
LIC # 01743417 (415) 461-1010, EXT 116
NBALLARD@KEEGANCOPPIN.COM

MATT STORMS, PARTNER
LIC # 01233478 (415) 461-1010, EXT 123
MSTORMS@KEEGANCOPPIN.COM

The above information, while not guaranteed, has been secured from sources we believe to be reliable. Submitted subject to error, change or withdrawal. An interested party should verify the status of the property and the information herein.



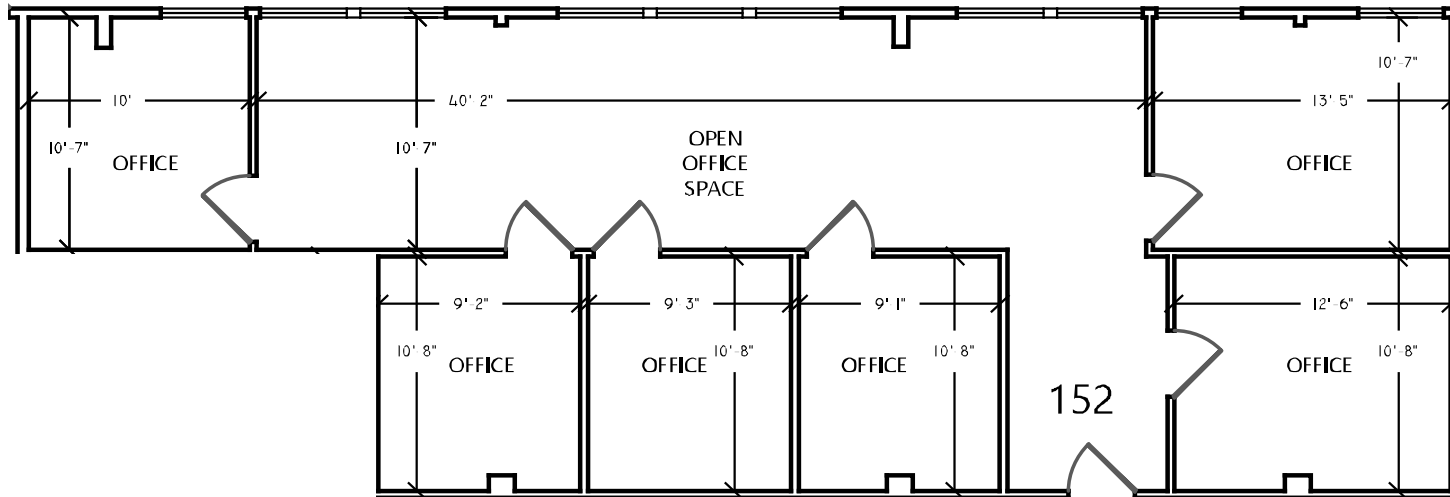
FLOOR PLANS



1682 NOVATO BLVD
NOVATO, CA

BAYWOOD CENTER OFFICE SPACE

SUITE 152: 1,400+/- RSF



REPRESENTED BY: NATHAN BALLARD, PARTNER
 LIC # 01743417 (415) 461-1010, EXT 116
 NBALLARD@KEEGANCOPPIN.COM

MATT STORMS, PARTNER
 LIC # 01233478 (415) 461-1010, EXT 123
 MSTORMS@KEEGANCOPPIN.COM



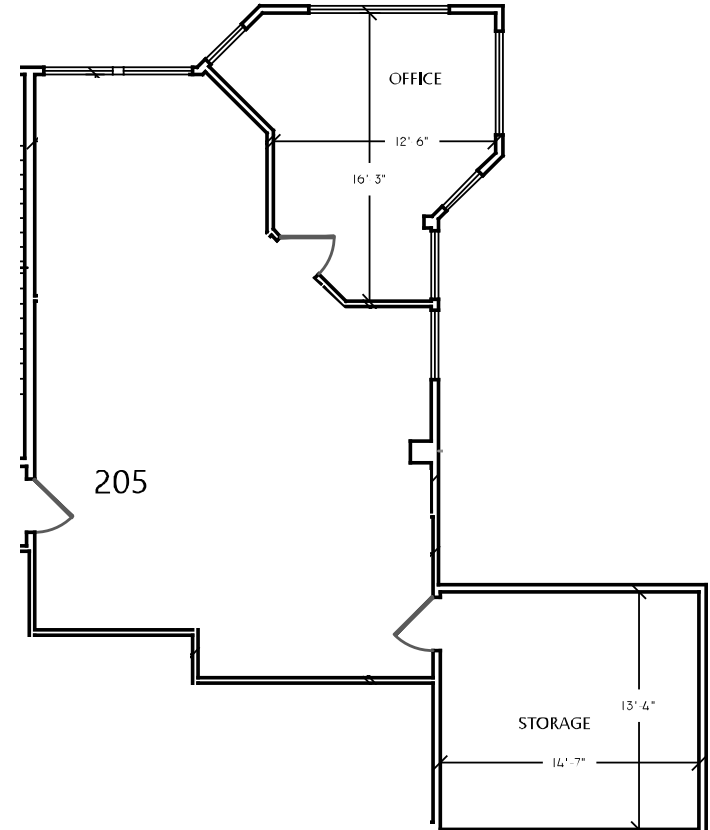
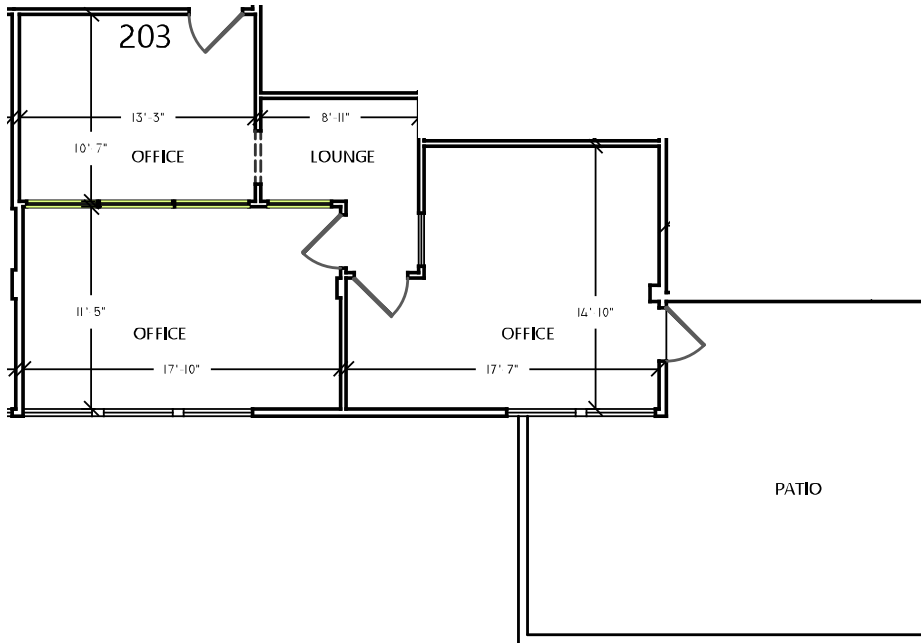
FLOOR PLANS



1682 NOVATO BLVD
NOVATO, CA

BAYWOOD CENTER OFFICE SPACE

SUITE 203: 1,248+/- RSF
SUITE 205: 1,232+/- RSF
CAN BE COMBINED FOR 2,480 RSF



REPRESENTED BY: **NATHAN BALLARD, PARTNER**
LIC # 01743417 (415) 461-1010, EXT 116
NBALLARD@KEEGANCOPPIN.COM

MATT STORMS, PARTNER
LIC # 01233478 (415) 461-1010, EXT 123
MSTORMS@KEEGANCOPPIN.COM



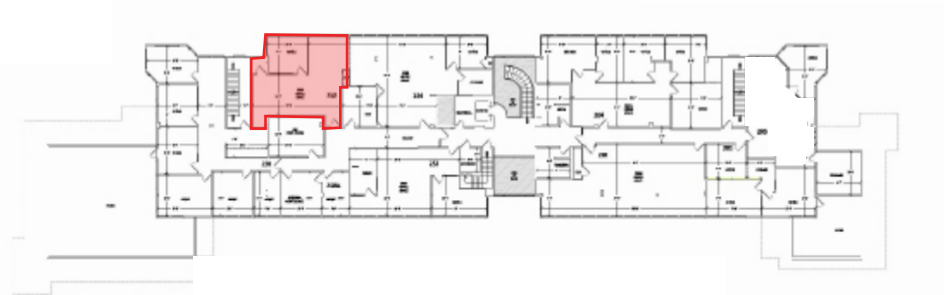
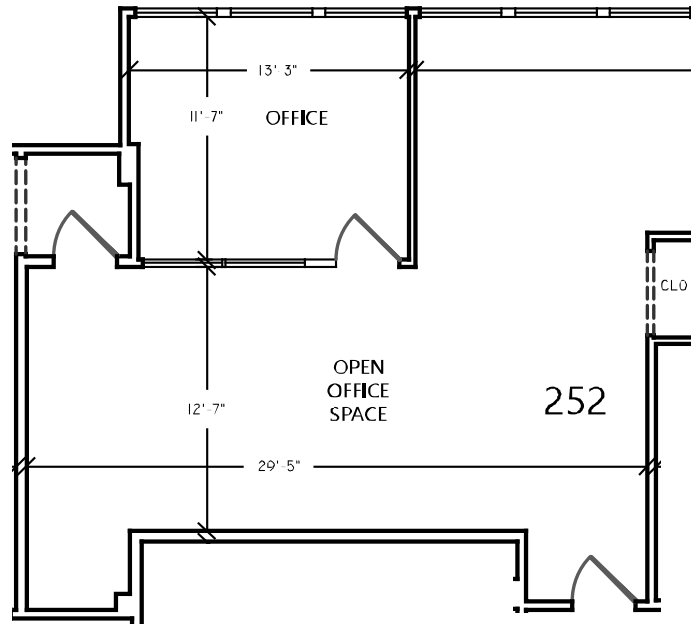
FLOOR PLANS



1682 NOVATO BLVD
NOVATO, CA

BAYWOOD CENTER OFFICE SPACE

SUITE 252: 908+/- RSF



REPRESENTED BY: NATHAN BALLARD, PARTNER
 LIC # 01743417 (415) 461-1010, EXT 116
 NBALLARD@KEEGANCOPPIN.COM

MATT STORMS, PARTNER
 LIC # 01233478 (415) 461-1010, EXT 123
 MSTORMS@KEEGANCOPPIN.COM



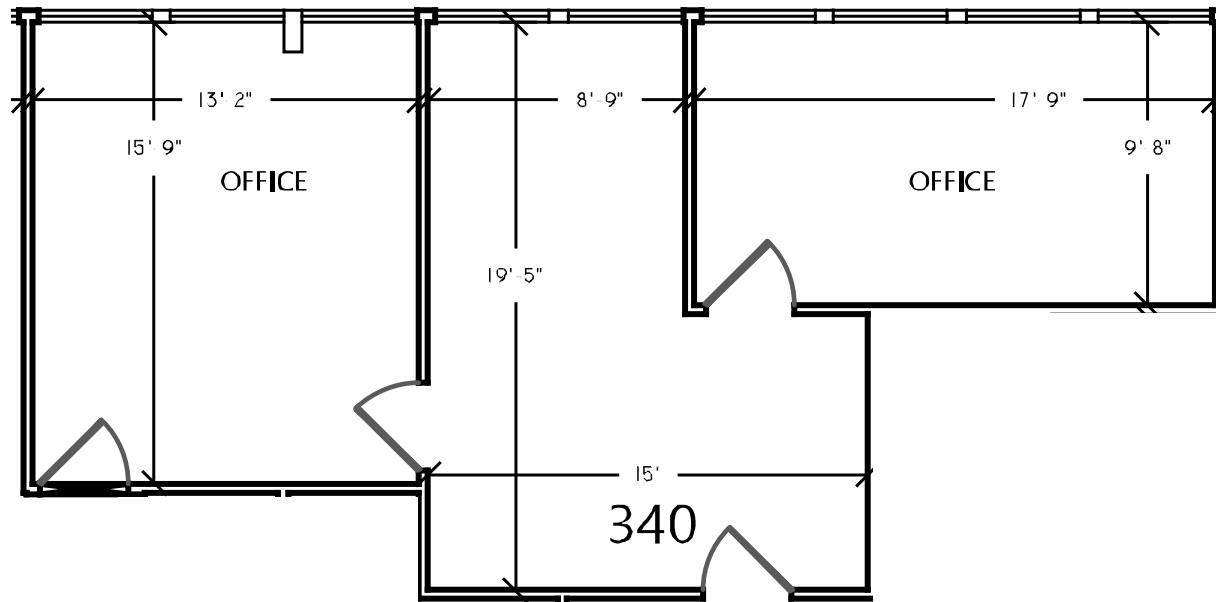
FLOOR PLANS



1682 NOVATO BLVD
NOVATO, CA

**BAYWOOD CENTER
OFFICE SPACE**

SUITE 340: 799+/- RSF



REPRESENTED BY: NATHAN BALLARD, PARTNER
 LIC # 01743417 (415) 461-1010, EXT 116
 NBALLARD@KEEGANCOPPIN.COM

MATT STORMS, PARTNER
 LIC # 01233478 (415) 461-1010, EXT 123
 MSTORMS@KEEGANCOPPIN.COM



PHOTOS



1682 NOVATO BLVD
NOVATO, CA

**BAYWOOD CENTER
OFFICE SPACE**

