





101 S Gum Street

Kennewick, Washington 99336

Property Overview

Now available—an exceptional opportunity to own the renowned Cable Bridge Casino site, located at the high-visibility corner of Gum Street and 1st Avenue. This iconic property has been brought to shell condition, offering a clean slate for redevelopment to your exact specifications.

Featuring a spacious parking lot and a western-facing façade, the building benefits from excellent roadside exposure and natural light, ideal for attracting attention from passing traffic.

Zoned Heavy Industrial, the site supports a wide range of approved light and heavy industrial uses, and retail is also permitted, making this a highly flexible investment opportunity.

Unlock the potential of this landmark property—ideal for retailers, industrial users, or visionaries seeking a high-profile location with flexible use potential.

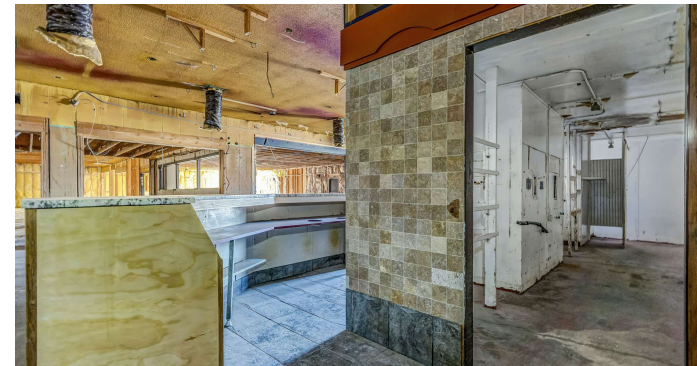
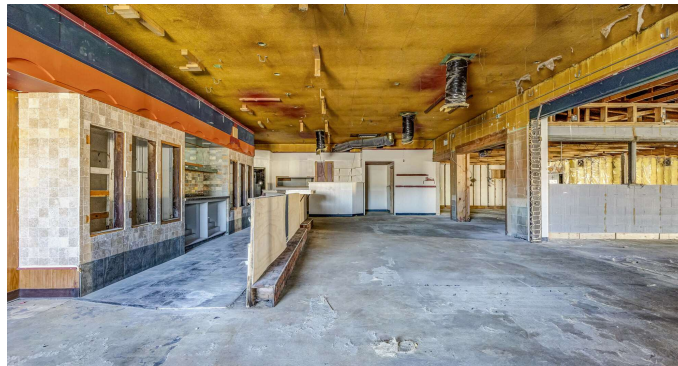
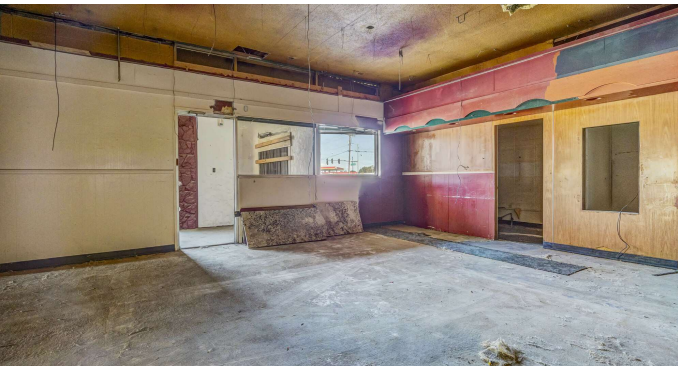
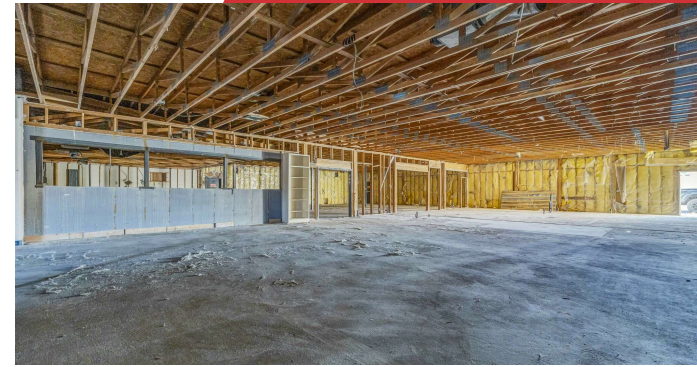
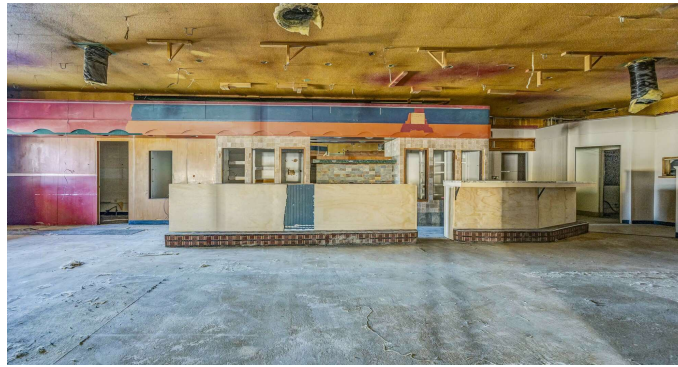
Property Highlights

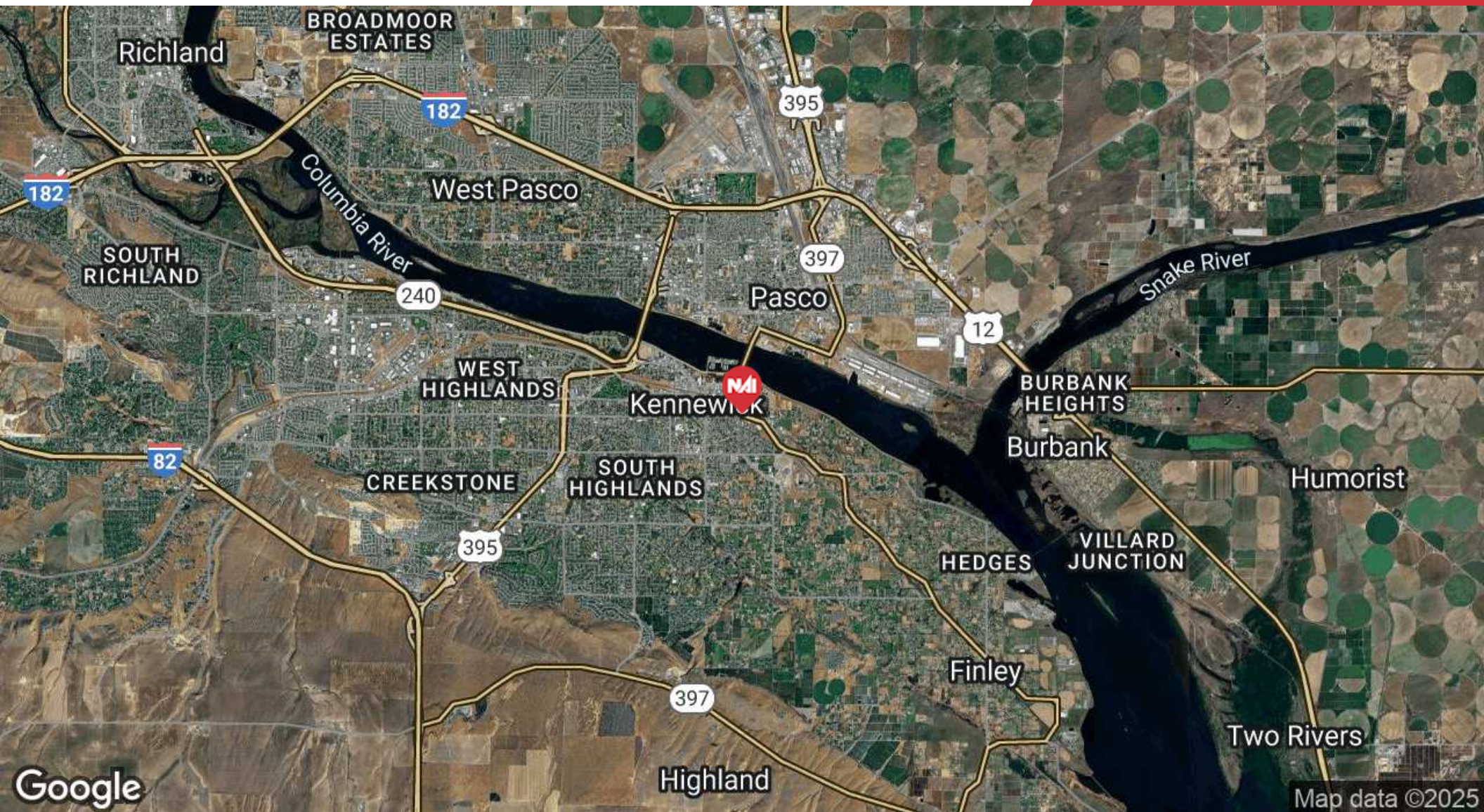
- Situated on two parcels
- Prime corner location
- Located on a 4-way signalized corner
- Iconic, recognizable site
- Shell condition
- Expansive on-site parking
- Heavy Industrial zoning (Retail use allowed)
- Outstanding visibility and access

For More Information

Kenny Teasdale

C: 509 491 2205
kenny@naitcc.com





We obtained the information above from sources we believe to be reliable. However, we have not verified its accuracy and make no guarantee, warranty or representation about it. It is submitted subject to the possibility of errors, omissions, change of price, rental or other conditions, prior sale, lease or financing, or withdrawal without notice. We include projections, opinions, assumptions or estimates for example only, and they may not represent current or future performance of the property. You and your tax and legal advisors should conduct your own investigation of the property and transaction.

89 Gage Blvd
 Richland, WA 99352
 509 943 5200 tel
naitri-cities.com

Population	1 Mile	3 Miles	5 Miles
Total Population	6,092	73,640	128,322
Average Age	36	35	36
Average Age (Male)	35	34	35
Average Age (Female)	37	36	37
Households & Income	1 Mile	3 Miles	5 Miles
Total Households	2,125	24,021	43,132
# of Persons per HH	2.9	3.1	3
Average HH Income	\$74,989	\$79,550	\$94,279
Average House Value	\$264,501	\$296,582	\$344,830

Demographics data derived from AlphaMap

