

# PLANNING IN ACTION

## JULY 2025

### PROJECT SNAPSHOT

## NEW DEVELOPMENT UPDATE

NAME: 31 Commons

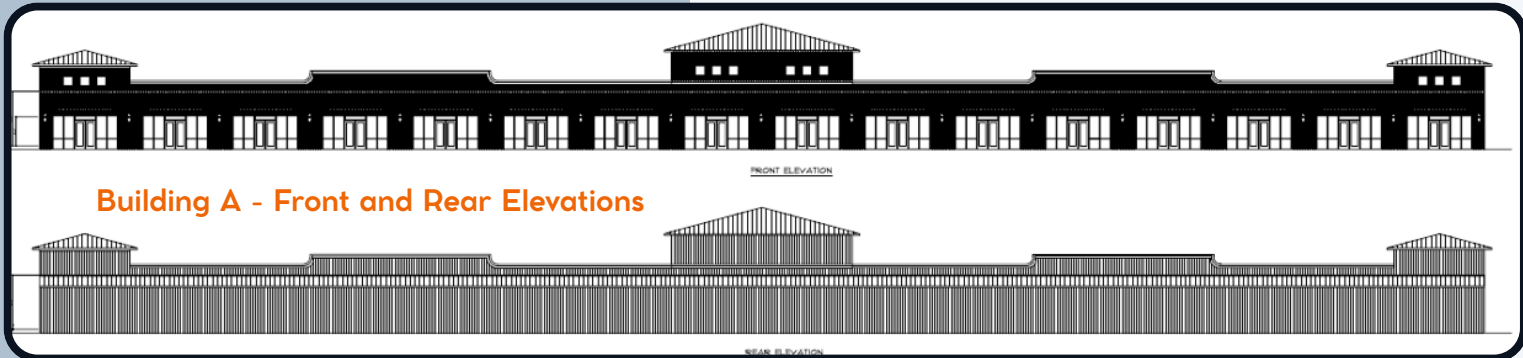
LOCATION: West side of S US Hwy 31 at Rain Drive

DEVELOPER: TR Peed Properties, LLC

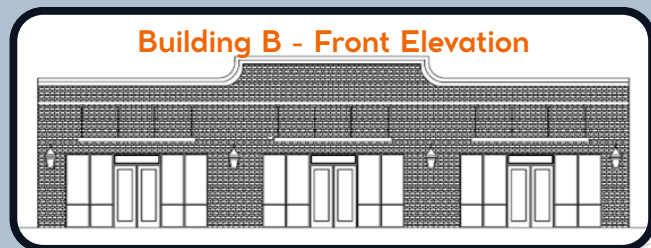
SITE INFO: ±4.60 acres // B-2, General Business Case SP-25005, the 31 Commons commercial project, received conditional Site Plan approval from the Planning Commission on June 12, 2025. It includes the new construction of two commercial buildings: a 24,600 sq ft shopping center with 16 retail units, and a separate 4,500 sq ft commercial building. The site has over 600 feet of frontage on Hwy 31 and will provide 101 parking spaces and extensive landscaping. This development supports continued commercial growth along one of Bay Minette's key corridors.



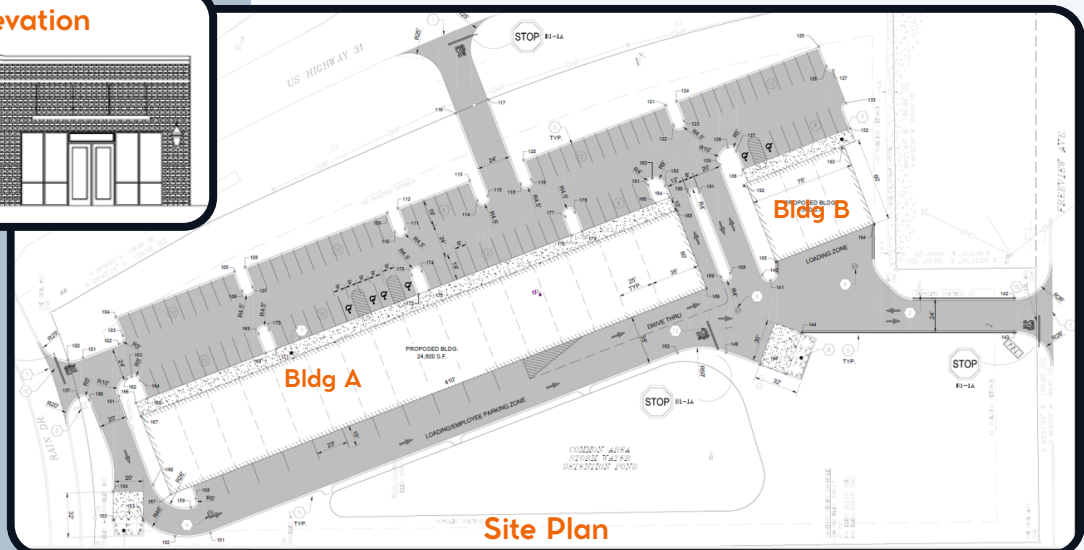
Locator Map



Building A - Front and Rear Elevations



Building B - Front Elevation



Site Plan

The City of Bay Minette Planning Commission holds regularly scheduled meetings on the 2<sup>nd</sup> Thursday of each month at 8:00AM in the City Hall Council Chambers at 301 D'Olive Street, Bay Minette, AL 36507. More information can be found on the Planning Dept website.



CITY OF BAY MINETTE PLANNING & DEVELOPMENT SERVICES DEPARTMENT  
[cityofbayminetteal.gov/departments/planning-and-development](http://cityofbayminetteal.gov/departments/planning-and-development)  
COBM\_Planning@cityofbayminetteal.gov (251) 580-1650