

FOR LEASE

MEDICAL OFFICES IN MESA, AZ @ Broadway East Medical Center

7525 E Broadway Rd | Mesa, AZ 8508

MATT ZACCARDI
D: 480.966.7625
M: 602.561.1339
mzaccardi@cpiaz.com

KATY HAUG
D: 480.623.2328
M: 816.808.7347
khaug@cpiaz.com



COMMERCIAL PROPERTIES INC.

Locally Owned, Globally Connected. CORFAC

TEMPE: 2323 W. University Drive, Tempe, AZ 85281 | 480.966.2301
SCOTTSDALE: 8777 N. Gainey Center Dr., Suite 245, Scottsdale, AZ 85258 | www.cpiaz.com

MEDICAL OFFICES AVAILABLE FOR LEASE



COMMERCIAL PROPERTIES, INC

About the Property

ADDRESS

7525 E Broadway Rd
Mesa, AZ 85208

LEASE RATE

\$16.95 NNN

NNN'S

\$4.32/SF

YEAR BUILT/ REMODELED

1997/2021

PARKING RATIO

6.34:1,000

FRONTAGE

E Broadway Rd

PARCEL

218-58-480

TENANCY

Multiple

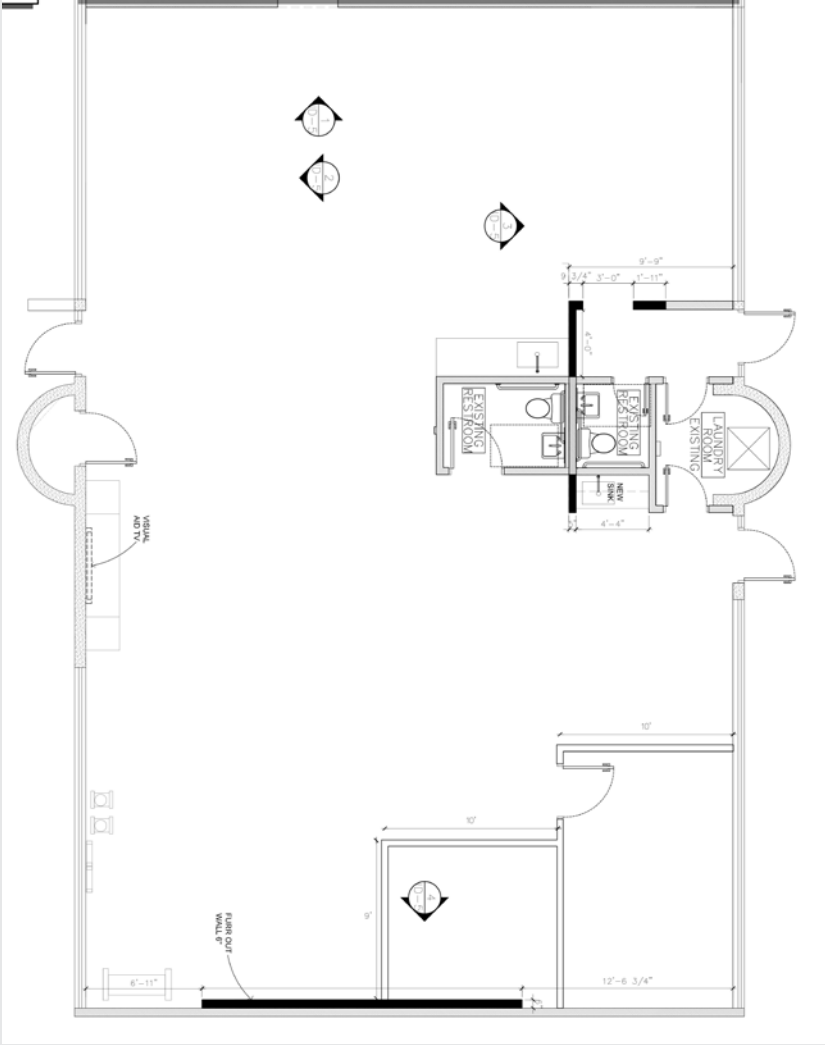
Suite 5

±2,449 SF

Prior Physical Therapy Clinic

Layout includes:

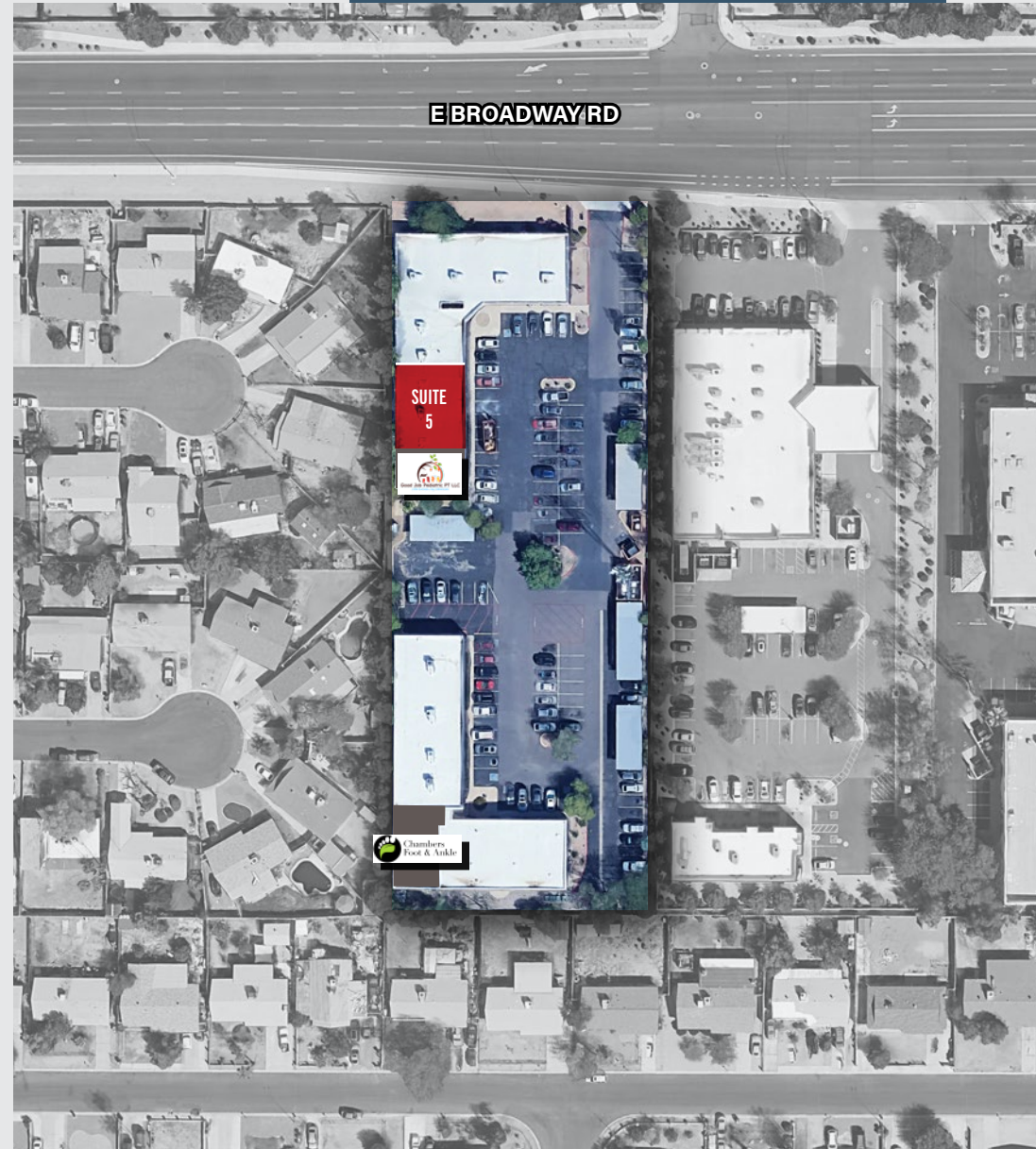
- 2 Offices/Exam Rooms
- Open Therapy Area
- 2 Restrooms



The information contained herein has been obtained from various sources. We have no reason to doubt its accuracy; however, J & J Commercial Properties, Inc. has not verified such information and makes no guarantee, warranty or representation about such information. The prospective buyer or lessee should independently verify all dimensions, specifications, floor plans, and all information prior to the lease or purchase of the property. All offerings are subject to prior sale, lease, or withdrawal from the market without prior notice.

MEDICAL OFFICES AVAILABLE FOR LEASE

Site Plan



Tenants



Arizona Pain & Spine Institute

Suite 1

A leading medical practice specializing in interventional pain management for chronic and spine-related conditions. Utilizing advanced, minimally invasive treatments, they are an established destination for pain relief with a strong patient draw from across the region.

<https://gotpainarizona.com/>



Intra Care Family Medicine

Suite 2

A long-standing primary care practice with over two decades of service to the East Valley. As part of the IntraCare network, they provide comprehensive family medicine, making them a stable, foundational tenant.

theintracare.com



MV Headache & Spine Institute

Suite 3/4

A highly specialized clinic focused on treating chronic headaches, migraines, and complex spine disorders. Offering cutting-edge, personalized therapies, the institute serves as a vital referral center for physicians, ensuring a consistent and targeted patient base.

mountainviewheadacheandspine.com



Good Job Pediatric PT LLC

Suite 6

In clinic Pediatric physical therapy for children to help them learn how to roll, sit, crawl, walk, and for infant head shape correction.

<https://goodjobpediatricpt.com/>



Hearing Solutions of Arizona

Suite 7

An established audiology practice providing comprehensive hearing healthcare, from diagnostics to advanced hearing aid technology. As a trusted local leader, they serve a growing demographic with essential, life-enhancing auditory health services.

hearingsolutionsofarizona.com



Allied Medical Associates

Suite 8/9

An established internal medicine practice with deep roots in the East Valley, known for its comprehensive adult patient care. Their respected local presence makes them a trusted and foundational tenant for the complex.

alliedmedicals.com



Tenants



Chambers Foot & Ankle

Suite 10

Are you looking for a foot doctor? Pain and loss of function in our feet and ankles can be a huge obstacle, and we understand that getting your body back to normal is of the utmost importance to you.

<https://footandankleaz.com/about/>



Southwest Cardio Vascular Associates

Suite 11

A leading multi-physician cardiology group providing advanced, full-spectrum cardiovascular care. As a vital referral center for area hospitals and physicians, they represent a high-value and stable medical tenant.

swcva.com



MEDICAL OFFICES AVAILABLE FOR LEASE

Aerial Map



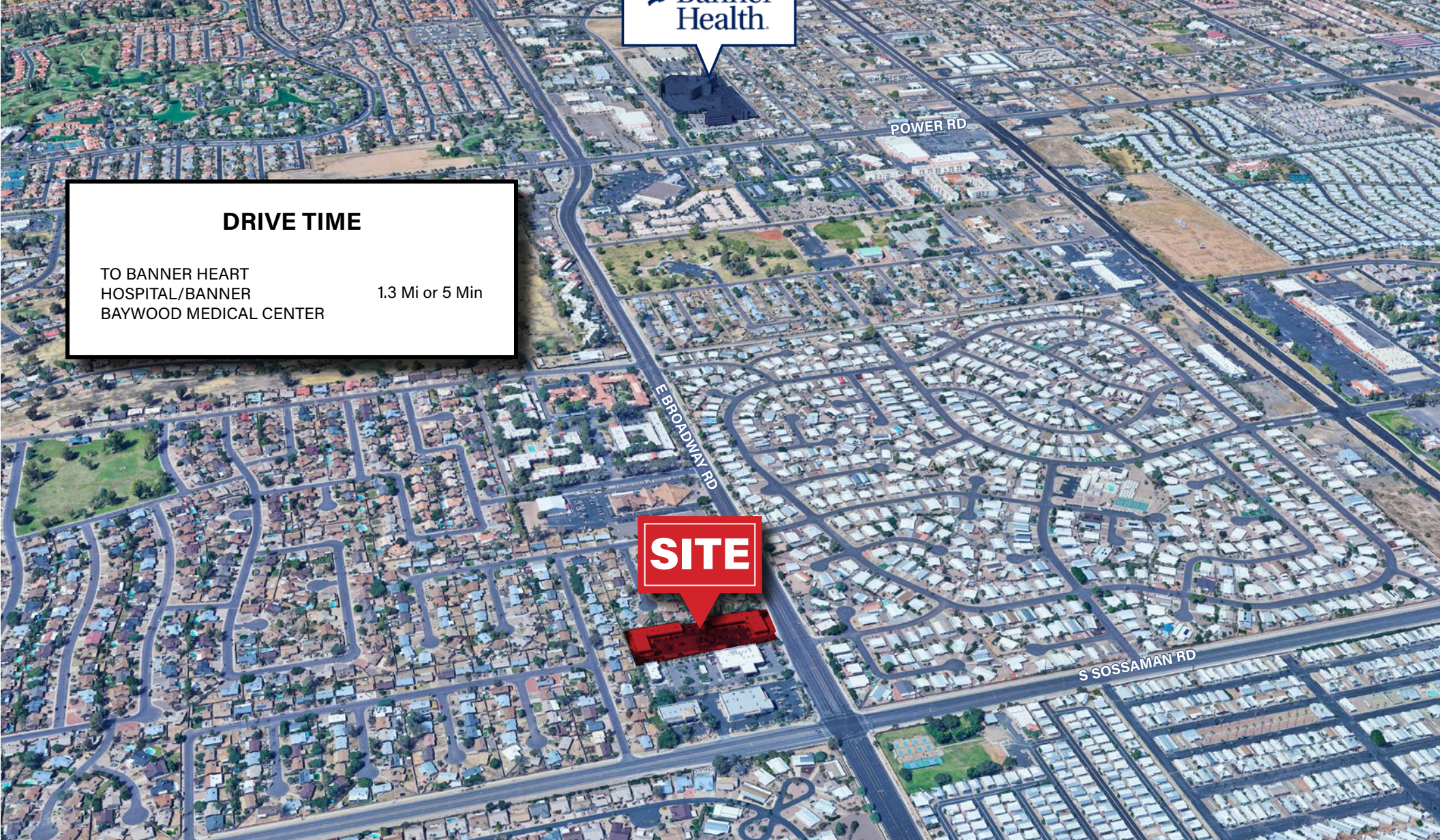
BANNER HEART HOSPITAL
& BANNER BAYWOOD
MEDICAL CENTER



DRIVE TIME

TO BANNER HEART
HOSPITAL/BANNER
BAYWOOD MEDICAL CENTER 1.3 Mi or 5 Min

SITE



About the Area

