

Property lines are approximate
LORIMONT
COMMERCIAL REAL ESTATE

3235 E JACKSON BLVD

JACKSON, MO 63755

CAR WASH

FOR SALE

Presented By:

CHRIS COLE, JD, CCIM

573.334.5200
ccole@lorimont.com

PROPERTY SUMMARY



PROPERTY DESCRIPTION

Introducing a prime commercial opportunity at 3235 E Jackson Blvd, Jackson, MO. This property is 2.97 acres brimming with potential for a restaurant operator or strip center developer. Zoned C-2, this tract offers much versatility for a variety of business uses. Adjacent to Walmart, Murphy Gas, AT&T, Jimmy John's and across from US Bank and Jackson Dental, this is a location right in the heart of expanding Jackson, MO. Don't miss the chance to secure a piece of prime ground!

PROPERTY HIGHLIGHTS

- -2.97 acres
- -High traffic and visibility
- -Zoned C-2
- -Priced at \$679,900!

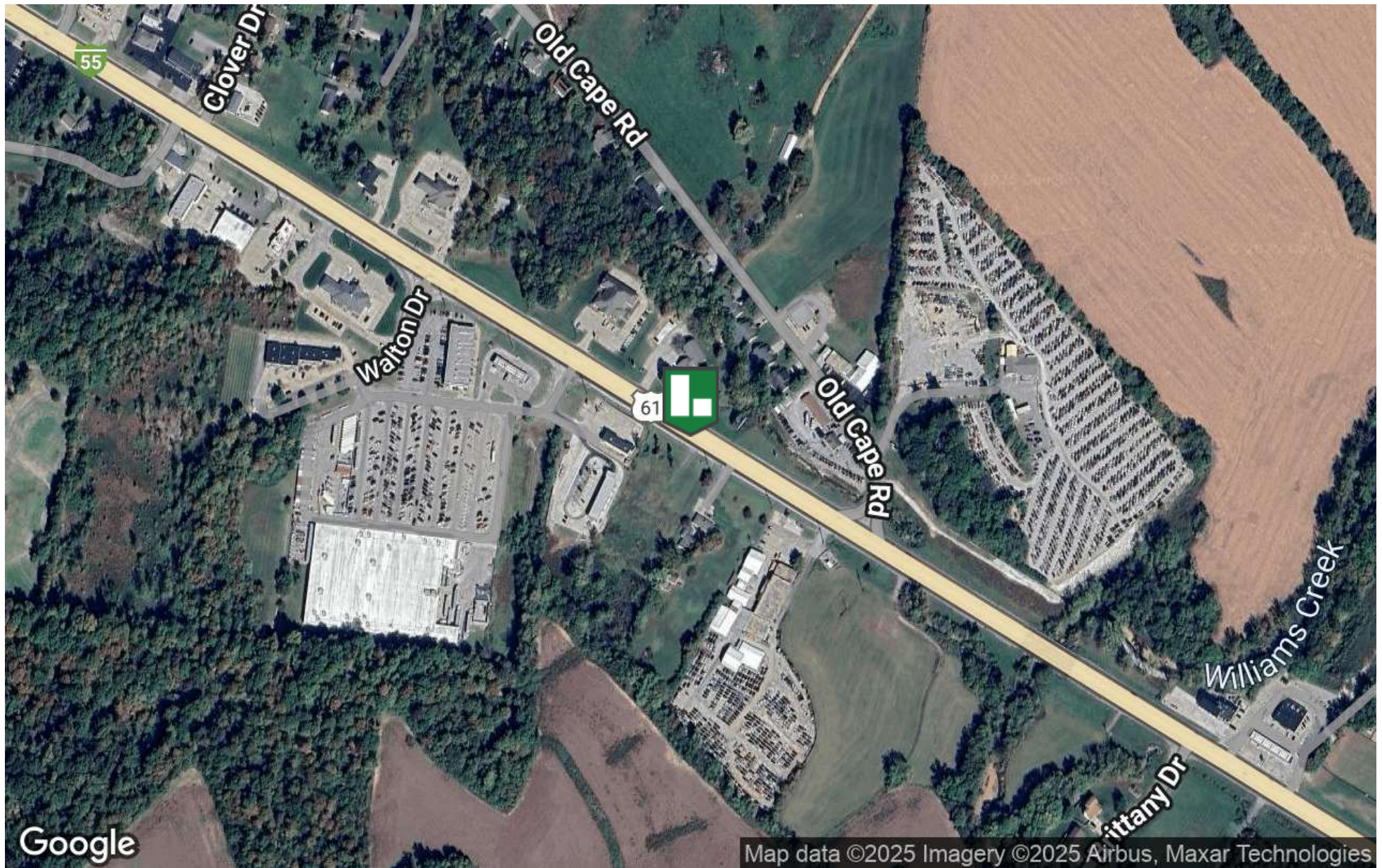
OFFERING SUMMARY

Sale Price:	\$679,900
Lot Size:	2.97 Acres

DEMOGRAPHICS	0.3 MILES	0.5 MILES	1 MILE
Total Households	42	107	413
Total Population	99	260	997
Average HH Income	\$113,405	\$112,282	\$112,585

Presented By: **CHRIS COLE, JD, CCIM** | ccole@lorimont.com

LOCATION MAP

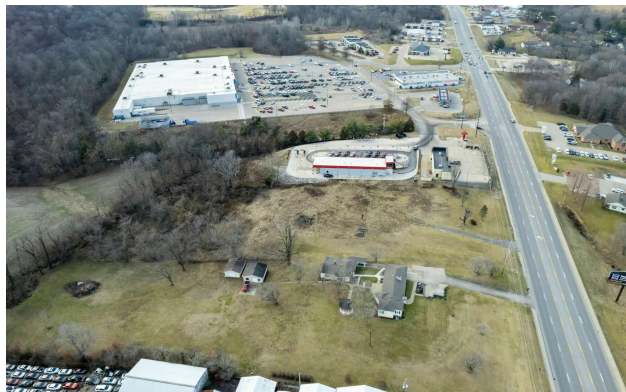
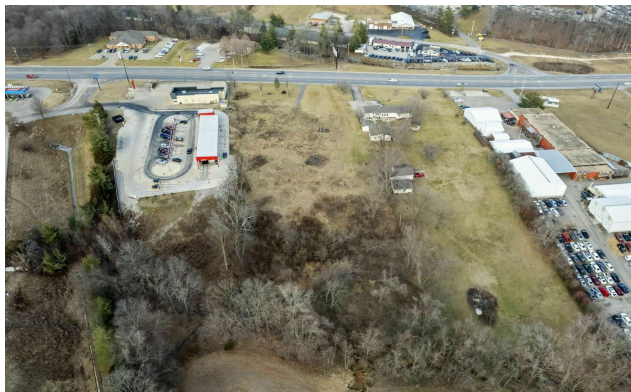


Presented By: **CHRIS COLE, JD, CCIM** | ccole@lorimont.com

RETAILER MAP



ADDITIONAL PHOTOS

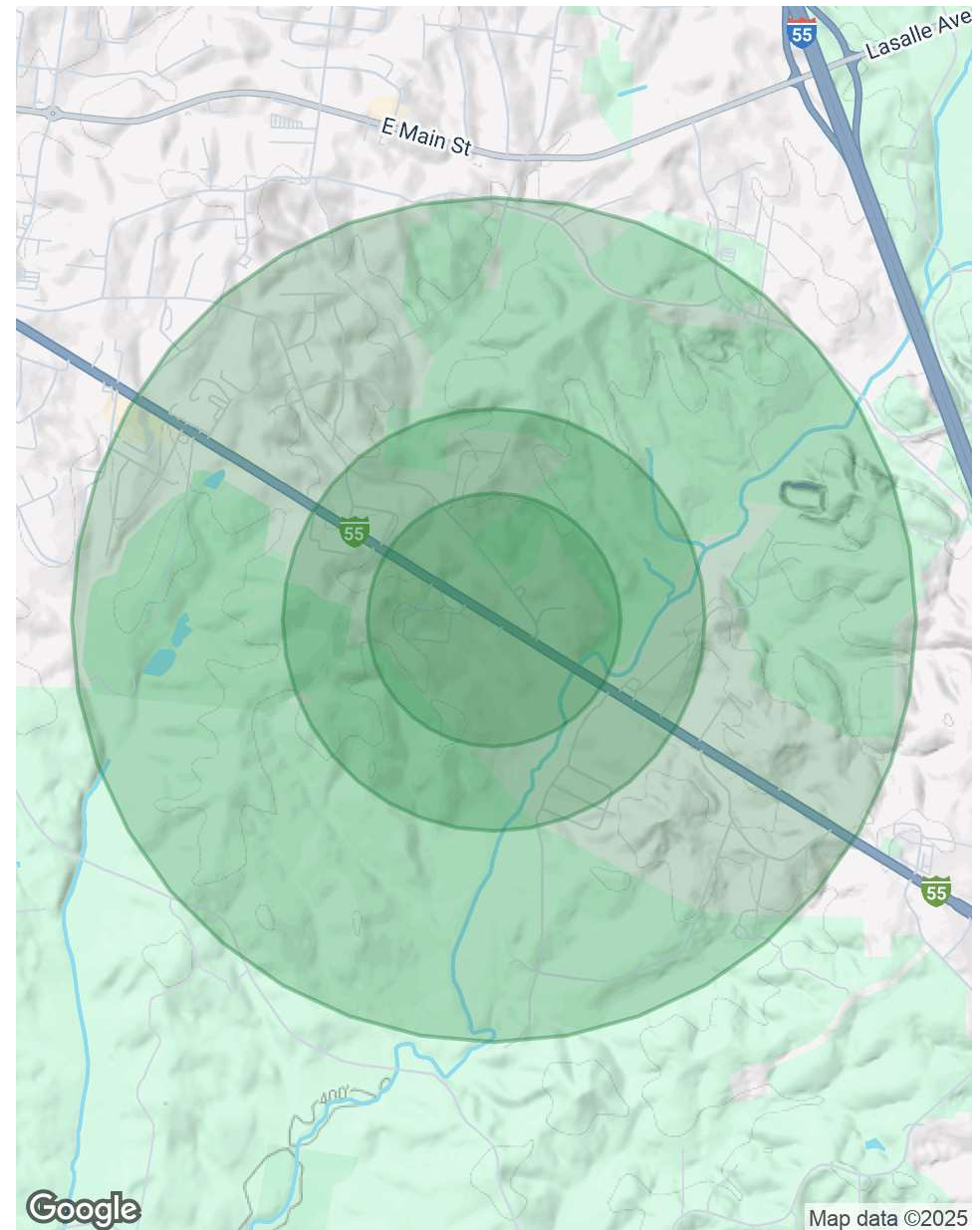


DEMOGRAPHICS MAP & REPORT

POPULATION	0.3 MILES	0.5 MILES	1 MILE
Total Population	99	260	997
Average Age	46	46	46
Average Age (Male)	43	43	43
Average Age (Female)	48	48	48

HOUSEHOLDS & INCOME	0.3 MILES	0.5 MILES	1 MILE
Total Households	42	107	413
# of Persons per HH	2.4	2.4	2.4
Average HH Income	\$113,405	\$112,282	\$112,585
Average House Value	\$380,368	\$373,595	\$375,423

Demographics data derived from AlphaMap



Presented By: **CHRIS COLE, JD, CCIM** | ccole@lorimont.com