

FOR SALE: OFFICE / RESIDENTIAL BUILDING

9207 Old Georgetown Road
Bethesda, Maryland 20814



LOCATION SUMMARY

- Great Exposure on Old Georgetown Road
- Located ½ mile from I-495 Capital Beltway
- ¼ mile from NIH & Suburban Hospital
- 3 minute drive and 1 ½ mile from downtown Bethesda

PREMISES

Building: 2,292 SF
Commercial House / Office

Land: .19 Acres (8,220 SF)

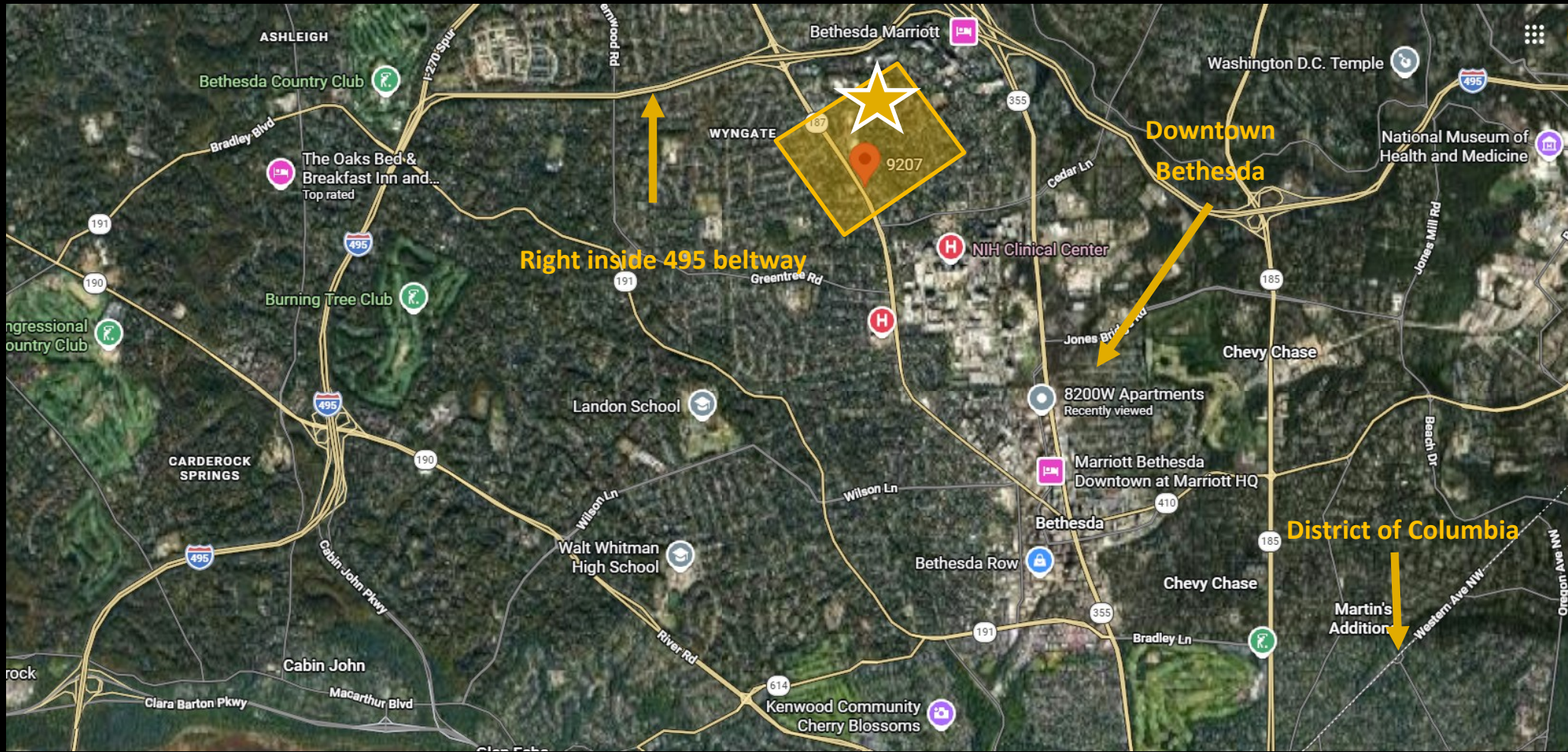
PROPERTY SUMMARY

- R-60 Zoning
- Improved with 2,292 SF Commercial/Office/Residential Building
- 3-level with walk-in lower level entrance
- 1-car garage
- Parking for up to 9 cars in rear asphalt paved parking lot
- Ideal for home office/ professional
- 4-6 Bedrooms for offices
- 1 Full Kitchen
- 2.5 Full Bathrooms
- Rear screened porch
- Brick lighted monument sign in front
- Potential uses include: Professional/ Office/ Live/ Work, Medical, Legal, Financial, Religious, Daycare, among others

Inside the Beltway

FOR SALE: OFFICE / RESIDENTIAL BUILDING

9207 Old Georgetown Road
Bethesda, Maryland 20814



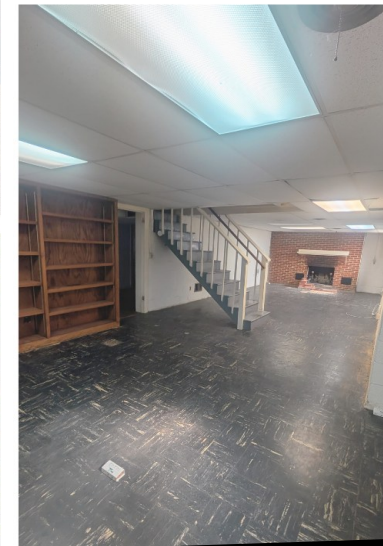
TDSILVEROCK

Matthew L. Gannon
Managing Principal
mgannon@silverockrealty.com
240.454.6562

Andrew P. Shulman
Managing Principal
ashulman@silverockrealty.com
240.454.6561

FOR SALE: OFFICE / RESIDENTIAL BUILDING

9207 Old Georgetown Road
Bethesda, Maryland 20814



TDG SILVEROCK

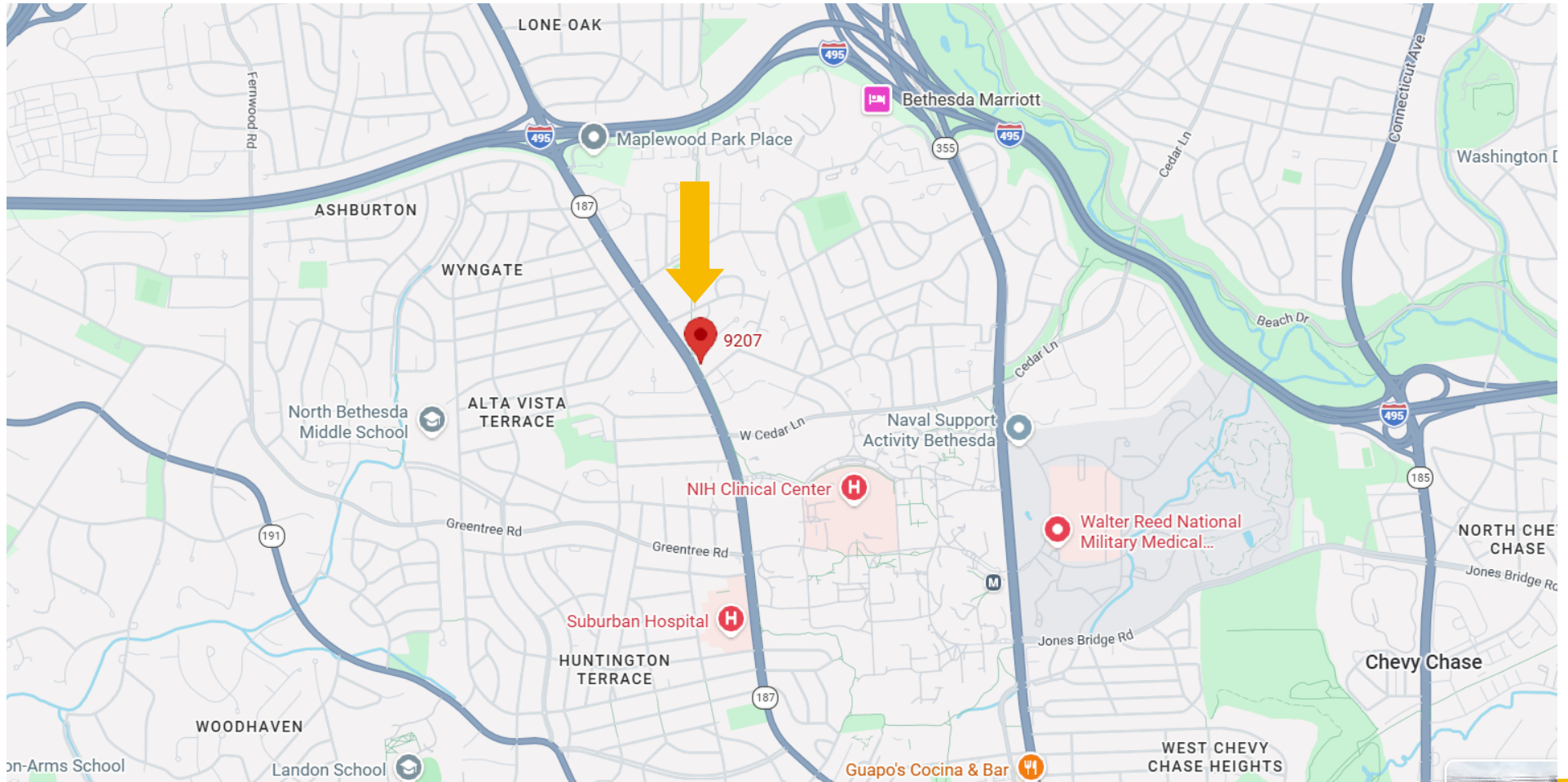
Matthew L. Gannon
Managing Principal
mgannon@silverockrealty.com
240.454.6562

Andrew P. Shulman
Managing Principal
ashulman@silverockrealty.com
240.454.6561

2400 Research Boulevard | Suite 400 | Rockville, MD 20850 | silverockrealty.com

FOR SALE: OFFICE / RESIDENTIAL BUILDING

9207 Old Georgetown Road
Bethesda, Maryland 20814



TDG SILVEROCK

Matthew L. Gannon
Managing Principal
mgannon@silverockrealty.com
240.454.6562

Andrew P. Shulman
Managing Principal
ashulman@silverockrealty.com
240.454.6561

2400 Research Boulevard | Suite 400 | Rockville, MD 20850 | silverockrealty.com