

# 121

## CORPORATE PARK



**17,834 SF AVAILABLE**

**601 CANYON DRIVE | SUITE 100 | COPPELL, TX 75019**

### PROPERTY OVERVIEW

17,834 SF AVAILABLE

CLASS A OFFICE BUILDING IN PARK ENVIRONMENT

SURFACE PARKING RATIO OF 5 SPACES PER 1,000 SF

TENANT MAINTAINS 24-HOUR CONTROL OF PREMISES

### LOCATION OVERVIEW

LOCATED OFF STATE HIGHWAY 121

IMMEDIATE ACCESS TO DFW AIRPORT (4 MILES)

CLOSE PROXIMITY TO: SH 121, SH 114 & I-635

DIRECT ACCESS TO DINING, HOSPITALITY, RETAIL/  
ENTERTAINMENT AMENITIES

LOCATED IN A TIER 1 SCHOOL DISTRICT

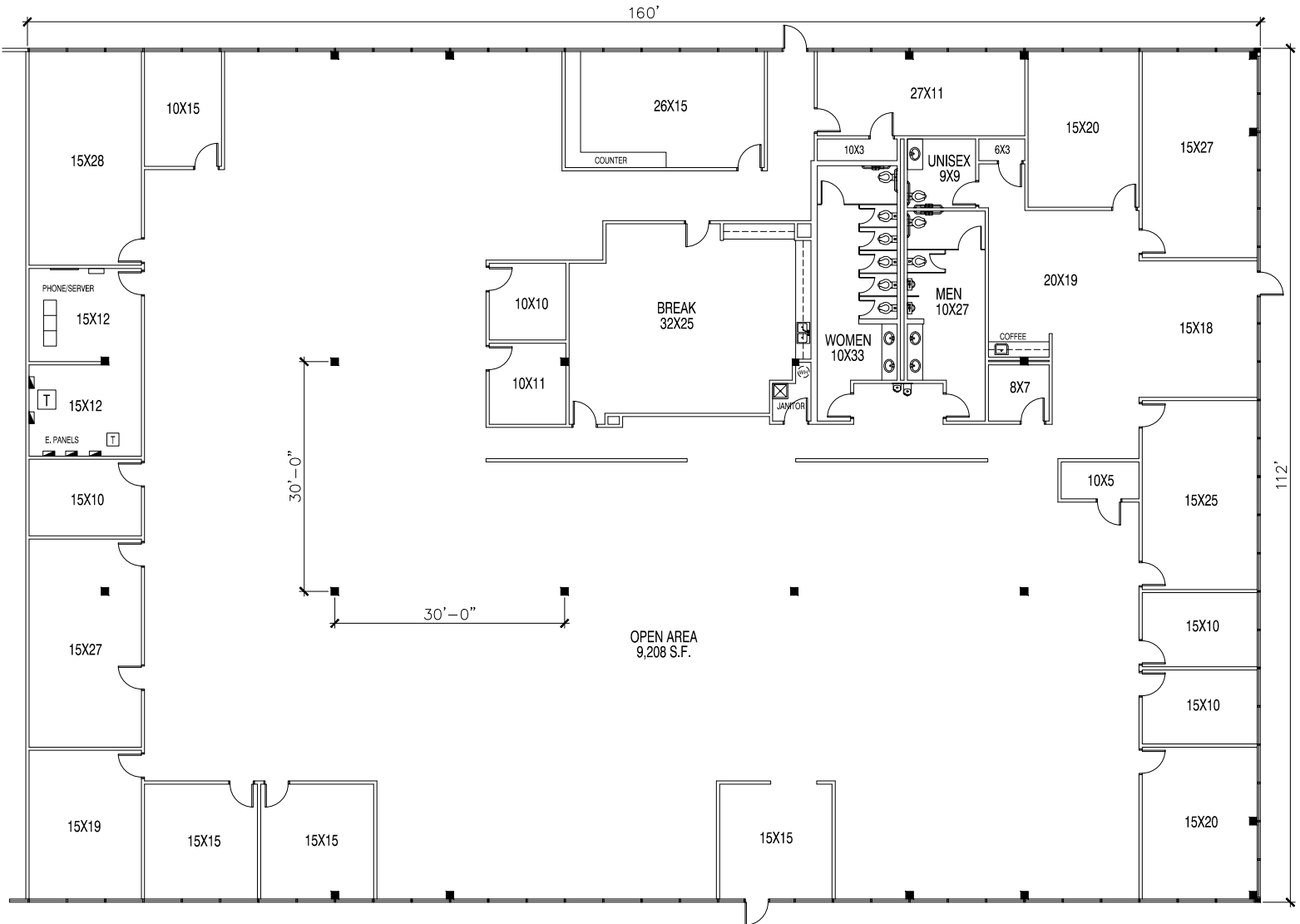


**JEREMY KELLY | 214-210-1360**  
JKELLY@STREAMREALTY.COM

**BOB HAGEWOOD | 214-267-0471**  
BHAGEWOOD@STREAMREALTY.COM

17,834 SF AVAILABLE

601 CANYON DRIVE | SUITE 100 | COPPELL, TX 75019



JEREMY KELLY | 214-210-1360  
JKELLY@STREAMREALTY.COM

BOB HAGEWOOD | 214-267-0471  
BHAGEWOOD@STREAMREALTY.COM