

LINCOLN BUILDING

MEDICAL OFFICE BUILDING FOR LEASE | 1717 LINCOLN WAY, COEUR D'ALENE, ID



CONTACT

DON CRAWFORD
208.660.1207
don@tokcommercial.com

HIGHLIGHTS

- Ground floor units now available for lease!
- Newly updated exterior.
- Unmatched visibility from Lincoln Way/Hwy 95.
- Ample off-street parking.
- Suitable for medical or professional use.
- Close proximity to Kootenai Medical Center.

DETAILS

SPACE	SIZE	RATE
Suite 107	+/- 2,272 SF	\$18.00/SF
Suite 108	+/-1,400 SF	\$18.00/SF

Units can be combined for a total of +/- 3,672 SF

PROPERTY TYPE:	Office	LEASE TYPE:	Mod. Gross
BLDG SIZE:	15,912 SF	DIVISIBILITY:	1,020- 1,400 SF
AVAILABILITY:	Immediately	ZONING:	CDA-C17L

UPDATED: 9.27.2024

THIS PROPERTY IS EXCLUSIVELY MARKETED BY TOK BOISE LLC DBA TOK COMMERCIAL
This information was obtained from sources believed reliable but cannot be guaranteed. Any opinions or estimates are used for example only.



UPDATED: 9.27.2024

THIS PROPERTY IS EXCLUSIVELY MARKETED BY TOK BOISE LLC DBA TOK COMMERCIAL

This information was obtained from sources believed reliable but cannot be guaranteed. Any opinions or estimates are used for example only.

TOKCOMMERCIAL.COM

SUITE 107

±2,272 SF

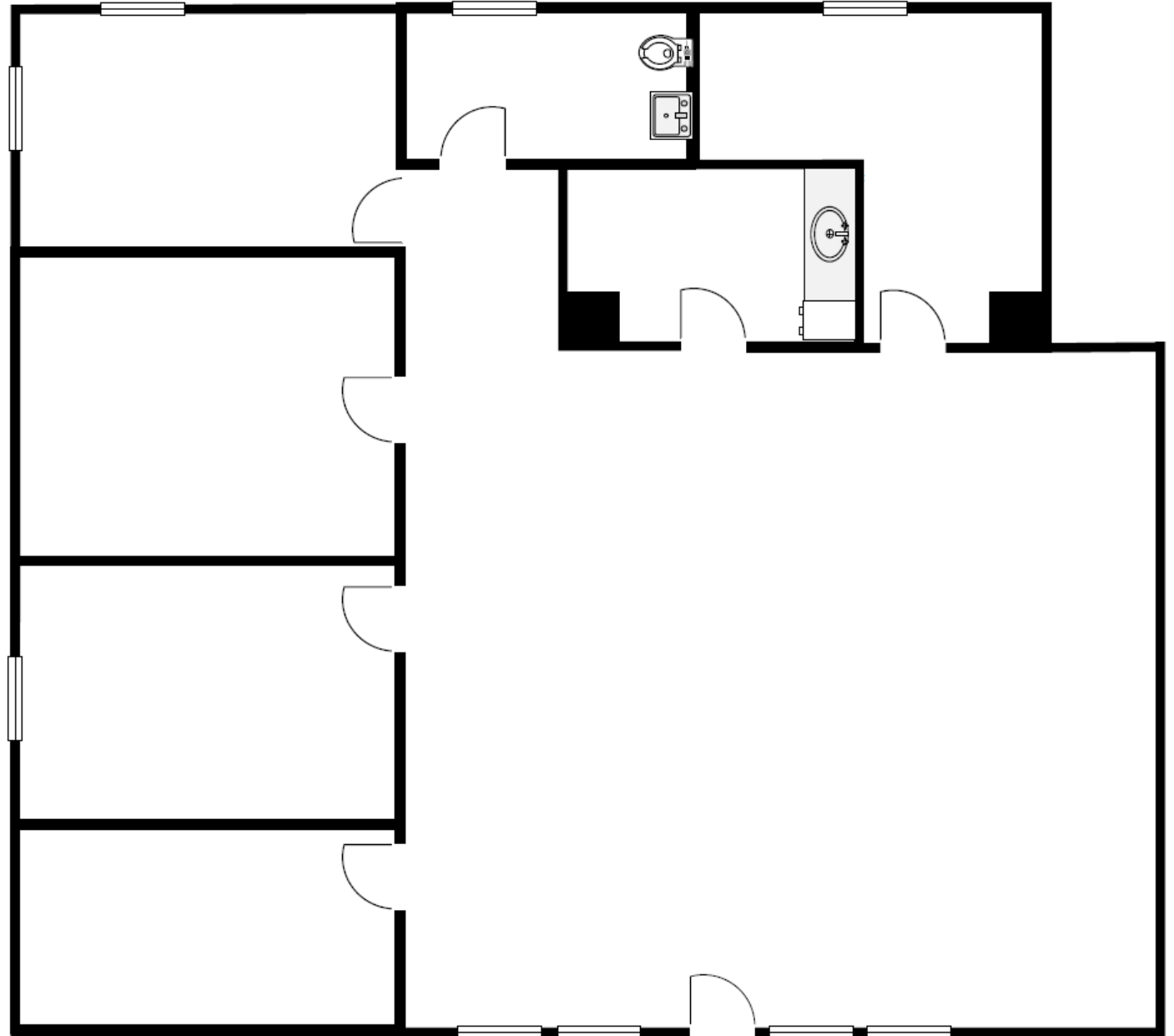


UPDATED: 9.27.2024

THIS PROPERTY IS EXCLUSIVELY MARKETED BY TOK BOISE LLC DBA TOK COMMERCIAL
This information was obtained from sources believed reliable but cannot be guaranteed. Any opinions or estimates are used for example only.

SUITE 108

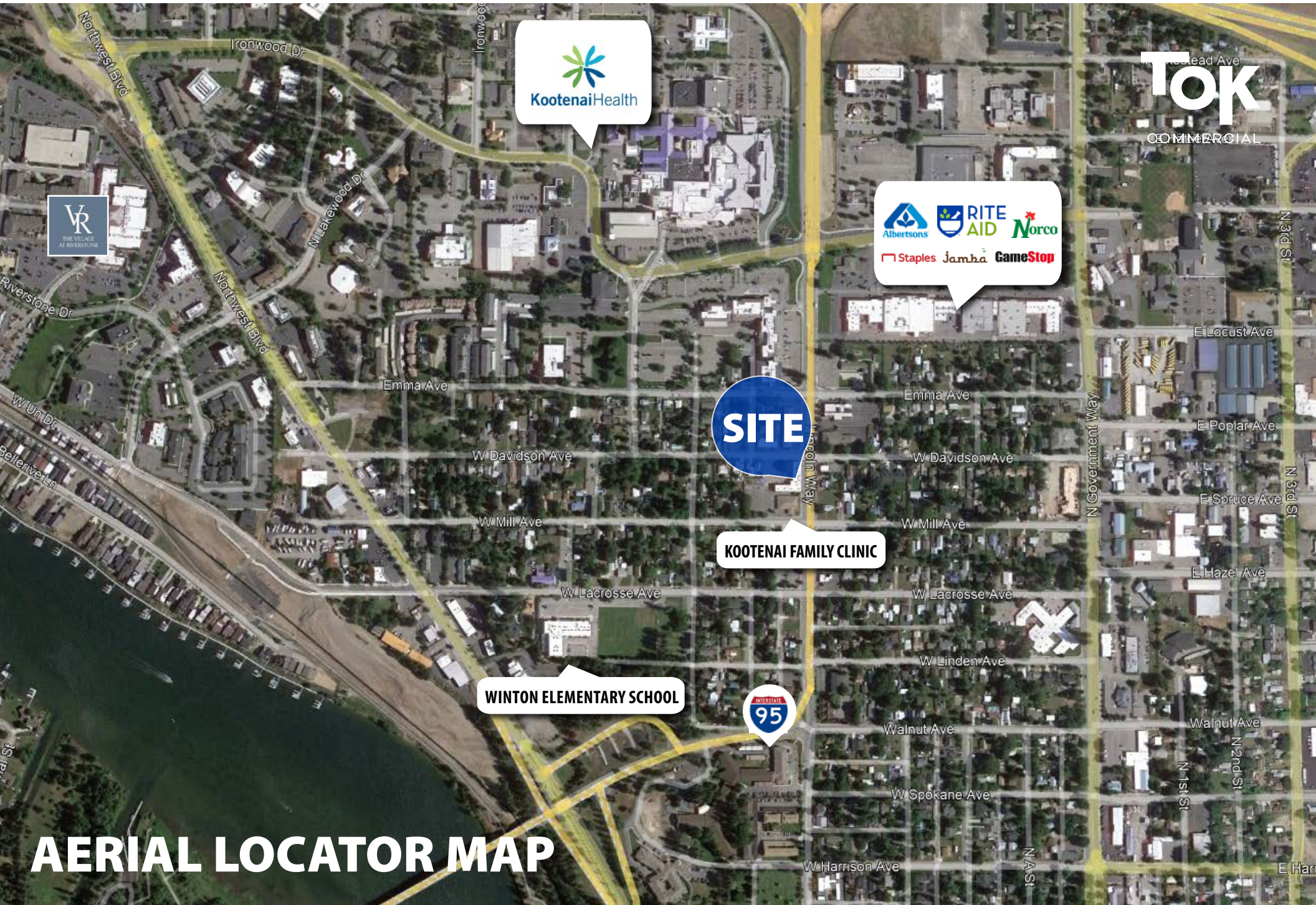
±1,400 SF



UPDATED: 9.27.2024

THIS PROPERTY IS EXCLUSIVELY MARKETED BY TOK BOISE LLC DBA TOK COMMERCIAL

This information was obtained from sources believed reliable but cannot be guaranteed. Any opinions or estimates are used for example only.



AERIAL LOCATOR MAP

UPDATED: 9.27.2024

THIS PROPERTY IS EXCLUSIVELY MARKETED BY TOK BOISE LLC DBA TOK COMMERCIAL
This information was obtained from sources believed reliable but cannot be guaranteed. Any opinions or estimates are used for example only.